

FLYSCREEN LS™
INSTRUCTION SHEET AND OWNER'S MANUAL
The following parts are pre-assembled on all models

 Flyscreen LS
 Model No. and Kit No.

Outside Plate	1ea.	Right Bracket	1ea.
Outside Plate Gasket	1ea.	Button Head Screw	4ea.
Left Bracket	1ea.	Hex Head Cap Nut	4ea.

→

KIT-FA Parts List for Flyscreen LS, N2530, N2531					
<i>BAG#020</i>			<i>BAG#024</i>		
PART #	DESCRIPTON	QTY	PART #	DESCRIPTON	QTY
37-371110	Outer Clamp 44mm	2	37-371130	Intermediate Bracket	2
37-371120	Inner Clamp 44mm	2	51-515720	6 mm Allen Head Screw	4
	.031" Rubber Spacer	2	49-492550	Washer	4
	.047" Rubber Spacer	2			
	.062" Rubber Spacer	2			
	.094" Rubber Spacer	2			
	.125" Rubber Spacer	2			

→

KIT-FC Parts List for Flyscreen LS, N2532, N2533					
<i>Bag#020</i>			<i>Bag#025</i>		
PART #	DESCRIPTON	QTY	PART #	DESCRIPTON	QTY
37-371110	Outer clamp 44mm	2	37-371140	Right Inter Bracket	1
37-371120	Inner clamp 44mm	2	37-371142	Left Inter Bracket	1
	.031" Rubber Spacer	2	51-515720	6 mm Allen Head Screw	4
	.047" Rubber Spacer	2	49-492550	Washer	4
	.062" Rubber Spacer	2			
	.094" Rubber Spacer	2			
	.125" Rubber Spacer	2			

→

KIT-FE Parts List for Flyscreen LS, N2534, N2535					
<i>Bag#022</i>			<i>Bag#024</i>		
PART #	DESCRIPTON	QTY	PART #	DESCRIPTON	QTY
37-371114	Outer clamp 57 mm	2	37-371130	Intermediate Bracket	2
37-371124	Inner clamp 57 mm	2	51-515720	6 mm Allen Head Screw	4
	.031" Rubber Spacers	2	49-492550	Washer	4
	.047" Rubber Spacers	2			
	.062" Rubber Spacers	2			
	.094" Rubber Spacers	2			
	.125" Rubber Spacers	2			

→

KIT-FG Parts List for Flyscreen LS, N2536, N2537					
<i>Bag#022</i>			<i>Bag#025</i>		
PART #	DESCRIPTON	QTY	PART #	DESCRIPTON	QTY
37-371114	Outer Clamp 57 mm	2	37-371140	Right Inter Bracket	1
37-371124	Inner Clamp 57 mm	2	37-371142	Left Inter Bracket	1
	.031" Rubber Spacer	2	51-515720	6 mm Allen Head Screw	4
	.047" Rubber Spacer	2	49-492550	Washer	4
	.062" Rubber Spacer	2			
	.094" Rubber Spacer	2			
	.125" Rubber Spacer	2			

INSTALLATION

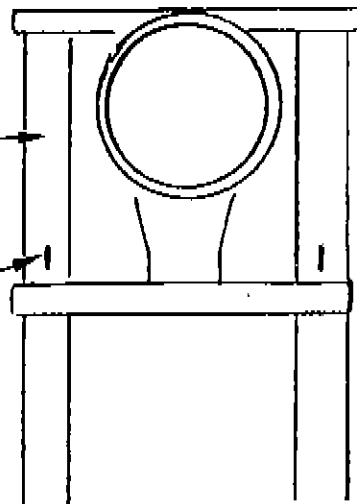
1. Measure the motorcycle fork:

Diameter: _____

Width: _____

MEASURE FORK
DIAMETER

MEASURE FORK
WIDTH CENTER
TO CENTER



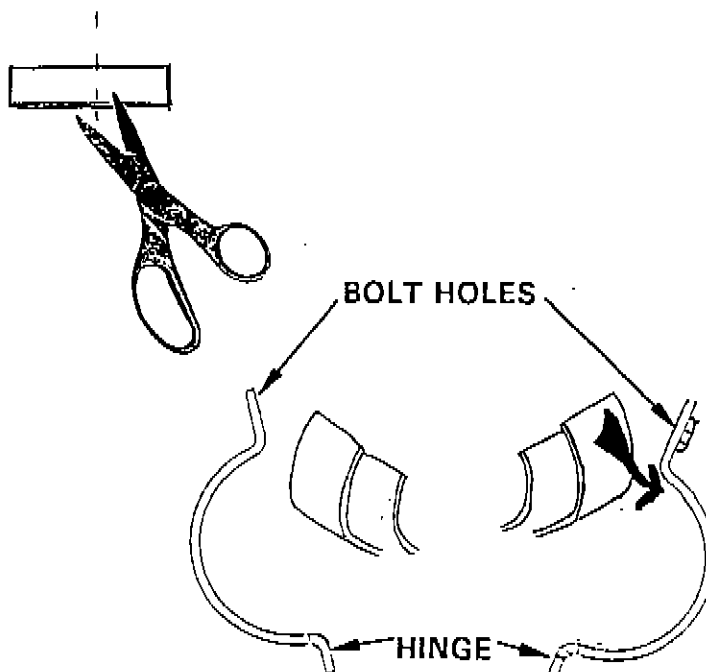
GASKET CHART

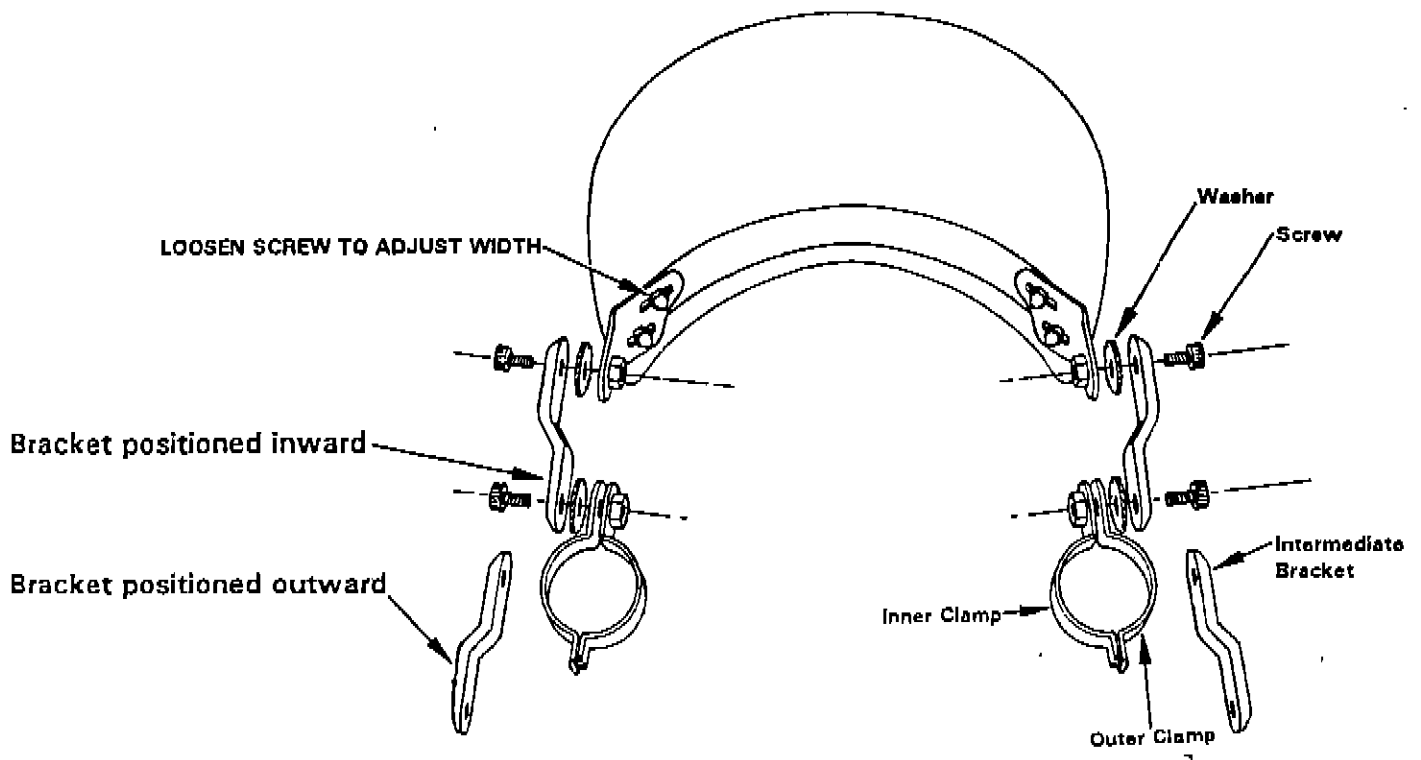
FORK DIAMETER	QTY	GASKET	GAUGE
31 mm	2 ea.	.094"	.062" .125"
33 mm	2 ea.	.047"	.062" .125"
34.6 mm	2 ea.	.031"	.047" .125"
35 mm	2 ea.	.047"	.062" .094"
36 mm	2 ea.	.047"	.125"
37 mm	2 ea.	.062"	.094"
38 mm	2 ea.	.047"	.094"
39 mm	2 ea.	.125"	
40 mm	2 ea.	.094"	
41 mm	2 ea.	.031"	.047"
43 mm	2 ea.	.047"	
49 mm	2 ea.	.047"	.125"
54 mm	2 ea.	.031"	.047"
55 mm	2 ea.	.062"	
56 mm	2 ea.	.047"	

2. Select correct gaskets from the kit. Refer to the "Gasket Chart" and find your fork diameter. Select two strips of each gauge required for the fork diameter. (Note: 1 gasket is needed for each fork.)

3. Cut each gasket into 2 pieces. You will need 1 piece for each half of the clamp.

4. Before removing paper backing of gasket, fit gasket to clamp to verify correct length. Cut additional material off gaskets to correct length. Remove paper backing and apply the required gasket(s) to each clamp half. **Do Not Apply Gasket Over Hinge.**





5. Assemble windshield hardware. Use the Fork Width measurement to determine position of the Adjustable Intermediate bracket to windshield.

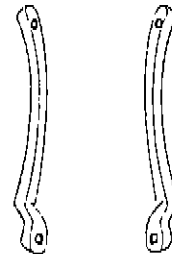
Change the position of the Intermediate bracket and the adjustment of the slotted bracket for windshield to fit the motorcycle fork width.

NOTE: BRACKET CAN BE REVERSED TO PROVIDE MORE ADJUSTMENT.

6. Hold windshield up to the motorcycle to check adjustment and determine fork clamp position.

7. Install windshield assembly to motorcycle. Make necessary adjustments. Fully tighten all nuts and Allen Head Screws.

CURVED INTERMEDIATE BRACKETS SUPPLIED IN KITS FC AND FG



WARNING

National Cycle windshields and fairings are designed to provide wind protection and increased riding comfort, but not protection in the event of a collision with another vehicle, the road, birds, or any other object.

Our products utilize certain features, patented and otherwise, that may minimize injury in certain accidents, but the possibility of injury exists if the screen is broken or if impacted by an object. Always wear eye protection, helmets and protective clothing. Never ride your motorcycle while under the influence of drugs or alcohol.

All of our products are made in conformance and exceed the requirements of DOT SS205,226.1, classifications AS6 and AS7, which covers all safety glazing for motorcycle application.

Never ride your motorcycle with loose windshield mounting hardware. Check the hardware for tightness regularly.

Today's motorcycles are built with enough frame rigidity to withstand the moderate loads imposed on them by the foreseeable addition of a fork mounted windshield.

If the addition of an accessory(ies) adversely affects your motorcycle's stability, immediately remove the accessory(ies). Do not ride a motorcycle that exhibits unsafe handling traits.

Have experienced service personnel correct any problem before riding with the accessory(ies) installed. For further questions concerning handling problems associated with an accessory(ies), contact your dealer, motorcycle manufacturer, or accessory manufacturer.

MAINTENANCE

To clean the screen, wash with a clean soft cloth, plenty of warm water and, if necessary, a non-abrasive soap such as dishwashing liquid. Flannel or soft chamois make good cleaning cloths. Paint, glue residue or grease removal: Moisten cotton with Naphtha or Turpentine followed by a wash as above. Apply a high quality plastic cleaner, such as McGuir's Mirror-Glaze MG-17 or Novus #2, to the screen. This will leave a protective coating in the screen making future cleanings easier. Do not clean polycarbonate in hot sun or high temperatures.

Do not clean the screen with glass cleaners. Do not use rain protective products on the screen. The solvent action of the alcohol in these products will destroy the screen. Do not allow brake fluid, alcohol, or strong solvents to contact the screen or penetrate between the chrome brackets and the polycarbonate. Permanent damage will result! To remove fine scratches, use a very soft clean cloth and a fine grade buffing compound. Jewelers rouge or McGuir's Mirror-Glaze MG-10 are best for this type of buffing. We recommend hand buffing.

STORAGE

Do not use low quality vinyl covers or old shower curtains to store your motorcycle or windshield. These products damage the plastic of windshields and the motorcycle body.