

PARTS LIST

<u>INDEX</u>	<u>DESCRIPTION</u>	<u>QTY.</u>
1	37-370628 Windshield Bracket, Left	1
2	37-370629 Windshield Bracket, Right	1
BAG 346		
3	37-410507 Washer Plate	2
4	49-495570 Spacer, .250L	2
5	51-515746 Screw, Hex M8 x 45	4
6	49-495535 Spacer, 1.18L	4



Hex Key Wrench, 5mm
 Wrench, 13mm
 Screwdriver, #2 Phillips and a 7/16" wrench
 (for adjusting window if necessary)

NOTE: Bracket installation is best performed one side at a time

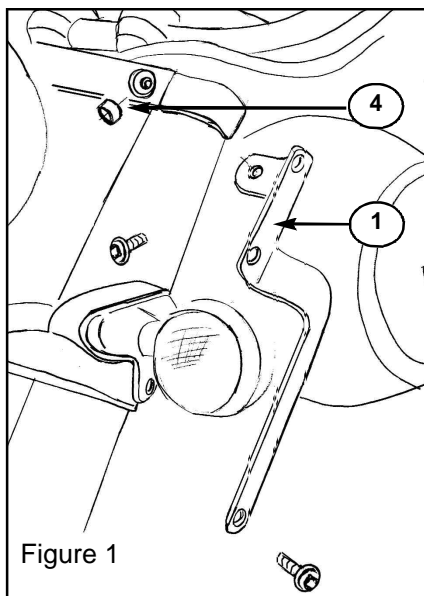


Figure 1

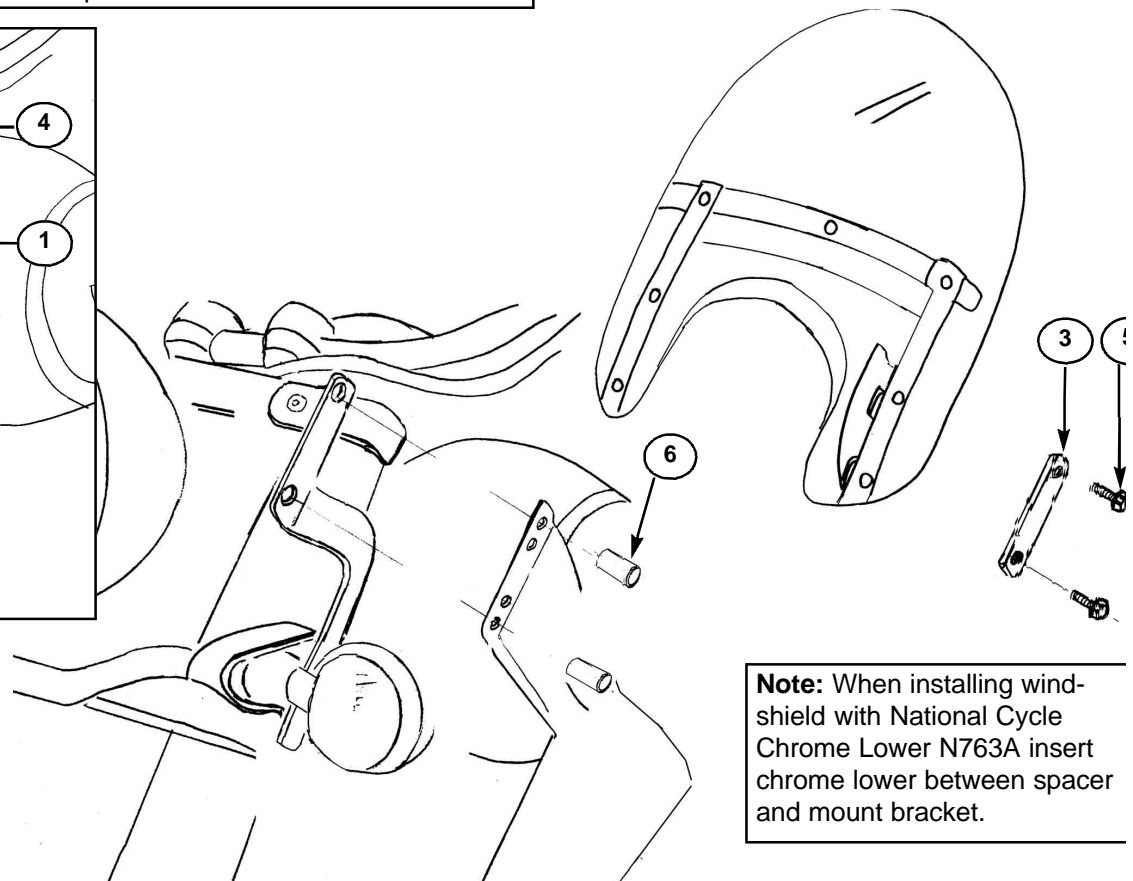


Figure 2

Note: When installing windshield with National Cycle Chrome Lower N763A insert chrome lower between spacer and mount bracket.

MOUNT BRACKET INSTALLATION Figure 1.

1. Remove the screw from the right side of the plate at the front of the upper triple-clamp. (Hex Key Wrench, 5mm) Retain screw for reuse.
2. Remove the screw from the right side of the turnsignal bar. Retain the screw for reuse.
3. Position the right side Mount Bracket, placing the Spacer between the bracket and the plate at the upper triple-clamp. Diagram 1.
4. Start the screw from step 1 at its original location, through the Bracket and the Spacer and into the triple-clamp
5. Start the screw from step 2 through the Bracket and into the lower threaded hole.
6. Repeat steps 1 through 6 on left side.
7. Tighten the mounting bracket screws to 10 ft. lbs (14Nm). (Hex Key Wrench, 5mm)

WINDSHIELD INSTALLATION: N2210, N2270 Figure 2.

Note: If installing Chrome Lowers N763A. Refer to Figure 2.

1. Put one M8 x 45 Hex Head screw through a hole in each Washer Plate.
2. Hold Windshield in place at Mount Brackets.
3. Thread Screw with Washer Plate, through Windshield Vertical Brackets, chrome lowers (if installed at this time), spacers, and into nuts on fork mounted brackets, do this on each side of shield.
4. Repeat Step 3 for remaining M8 x 45 Hex Head screws.
5. Adjust location of windshield on Mount Brackets to desired height and angle.
6. Tighten M8 Hex Head Screws to 15 foot/pounds torque (13mm Wrench).
7. If required adjust the adjusting window per provided instructions on page 2 of this instruction sheet.

Warning / Caution / Maintenance

WARNING National Cycle windshields and fairings are designed to provide wind protection and increased riding comfort, but not protection in the event of a collision with another vehicle, the road, birds, or any other object.

Our products utilize certain features, patented and otherwise, that may minimize injury in certain accidents, but the possibility of injury exists if the screen is broken or if impacted by an object. Always wear eye protection, helmets and protective clothing. Never ride your motorcycle while under the influence of drugs or alcohol.

All of our products are made in conformance and exceed the requirements of D.O.T. SS205,Z26.1, classifications AS6 and AS7, which covers all safety glazing for motorcycle application. Never ride your motorcycle with loose windshield mounting hardware. Check the hardware for tightness regularly.

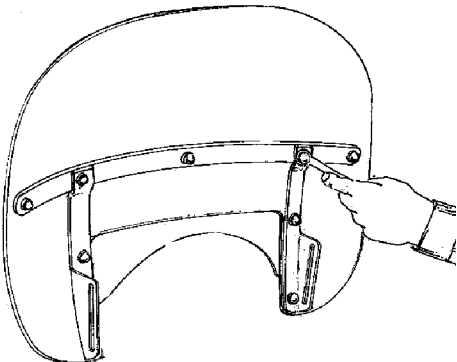
Today's motorcycles are built with enough frame rigidity to withstand the moderate loads imposed on them by the foreseeable addition of a fork mounted windshield. If the addition of an accessory(ies) adversely affects your motorcycle's stability, immediately remove the accessory(ies). Do not ride a motorcycle that exhibits unsafe handling traits.

Have experienced service personnel correct any problem before riding with the accessory(ies) installed. For further question concerning handling problems associated with an accessory(ies), contact your dealer, motorcycle manufacturer, or accessor manufacturer.

MAINTENANCE To clean the screen, wash with a clean soft cloth, plenty of warm water and, if necessary, a non-abrasive soap such as dishwashing liquid. Flannel or soft chamois make good cleaning cloths. Paint, glue residue or grease removal: Moisten cotton with Naphtha or Turpentine followed by a wash as above. Apply a high quality plastic cleaner, such as McGuir's Mirror-Glaze MG-17 or Novus #2, to the screen. This will leave a protective coating in the screen making future cleanings easier. Do not clean polycarbonate in hot sun or high temperatures.

Do not clean the screen with glass cleaners. Do not use rain protective products on the screen. The solvent action of the alcohol in these products will destroy the screen. Do not allow brake fluid, alcohol, or strong solvents to contact the screen or penetrate between the chrome brackets as permanent damage will result! To remove fine scratches, use a very soft clean cloth and a fine grade buffing compound. Jewelers rouge or McGuir's Mirror-Glaze MG-10 are best for this type of buffing. We recommend hand buffing.

STORAGE Do not use low quality vinyl covers or old shower curtains to store your motorcycle or windshield. These products damage the plastic of windshields and the motorcycle body.



Optional adjustment of the window.

The adjustable window is easily adjusted or changed in all National Cycle Heavy Duty Windshields. Loosen the 6 cap nuts on the vertical chrome strips. Replace or adjust the window. Tighten cap nuts to 2ft. lbs. (2.7 Nm), torque pressure.