



INSTALLATION INSTRUCTIONS

BMW R1250GS 2019-

Vario-X-Creen mit Stabilisator -
with stabilizer

INSTALLATION INSTRUCTIONS

BMW R1250GS 2019-

Thank you for buying a MRA Windshield.

Read this manual carefully and check the parts list for completeness before you begin. We recommend that you have your screen fitted by an authorised workshop.

Number	Article	Article No.	Required tools
1	MRA windscreen	---	Torx 25/30
1	Stabilizer including:	11382	Allen 3, 4, 5
2	PE pads, black and	11387	10mm open-end spanner
4	M6 x 20mm Allen screws	10662	
2	M5 x 16mm lens screws	11092	
2	12x5x0.5mm plastic washer	10635	

Disassembly of the original windscreen and the cover:

1. Place the motorcycle on a flat surface.
2. Using the Torx 25, remove the two mounting screws of the original screen (P1)
Attention: the windscreen must not slip out of the holder!
3. Take the windscreen out of the holder. Remove the black cover under the windscreen (P2 + P3)

Fixing the stabilizer to the motorcycle:

4. On the left side, remove the two retaining screws of the navigation frame using the Torx 30 and the 10mm open-end spanner (P4)
5. Mount the left-hand stabilizer (marked with an 'L') to the motorcycle using the M6x20 Allen screws. Pull the stabilizer backwards when tightening. Repeat the steps on the right-hand side (P5).
6. Now remount the black cover.

Mounting of the attachments to the MRA windscreen:

7. Now take the original windscreen and disassemble the screen holder and its rubber grommets using the Torx 20. Place the parts on a table – take care not to mix up the right-hand and the left-hand parts!
8. Add the attachments as shown in Fig. 6.
9. Take the MRA windscreen and insert the rubber grommets into the mounting holes as shown in Fig. 7. Now put the outer screen holder through the holes, as shown in Fig. 8. From inside, place the supplied PE pad [11387] against it (P9). The pad should be flush with the windscreen holder. Slightly tighten it with the inner bracket and the lower Torx screw (P10).

Align the holes of the PE pad and the windscreen holder and tighten the screws (P11) – on the right and on the left.

Mounting the MRA windscreen to the motorcycle:

10. Mount the MRA windscreen to the motorcycle using the original screws and tighten the screws with 4NM (P12).
11. Turn the height adjustment of the windscreen to the uppermost position and connect the windscreen to the stabilizer (P13) using the supplied M5x16 lens head screw [11092] and the plastic washer [10635]. Tighten the screws evenly.

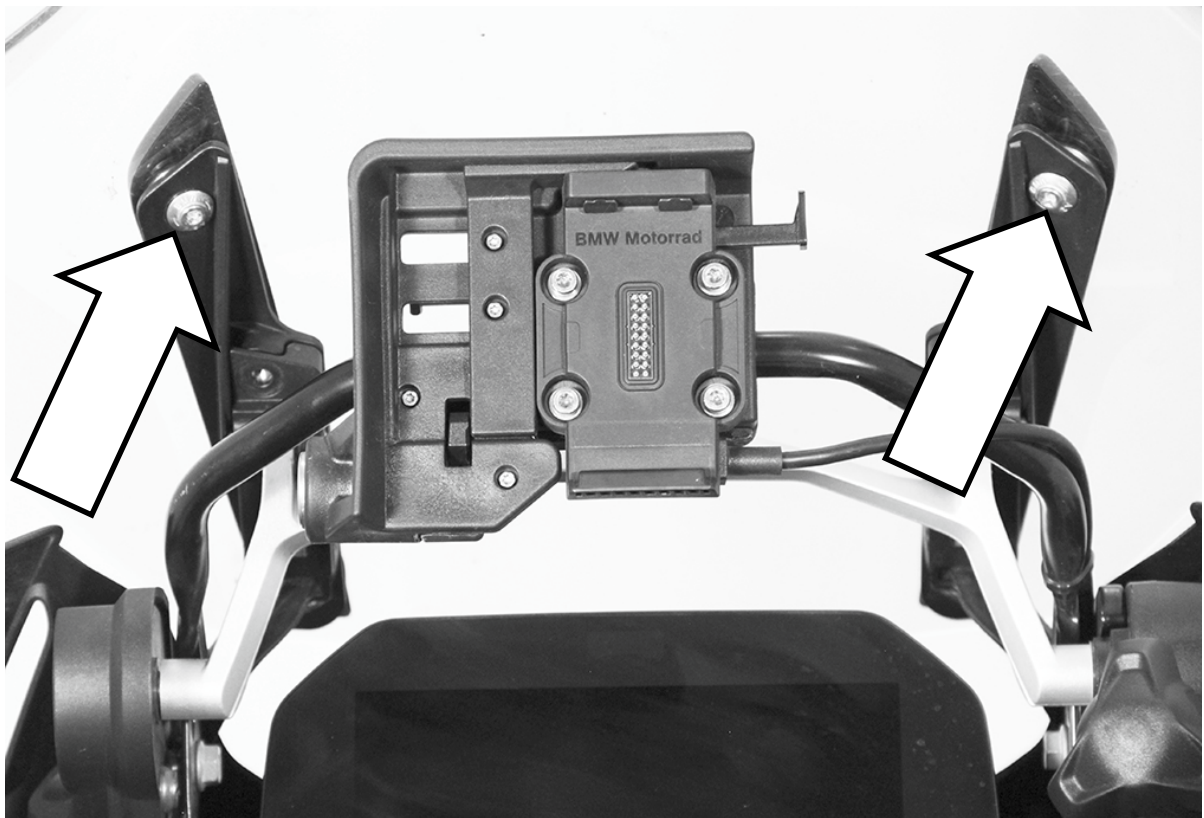
Final inspection and functional test:

12. Loosen the thumbscrews on the right and left and raise and lower the windscreen with the handwheel.

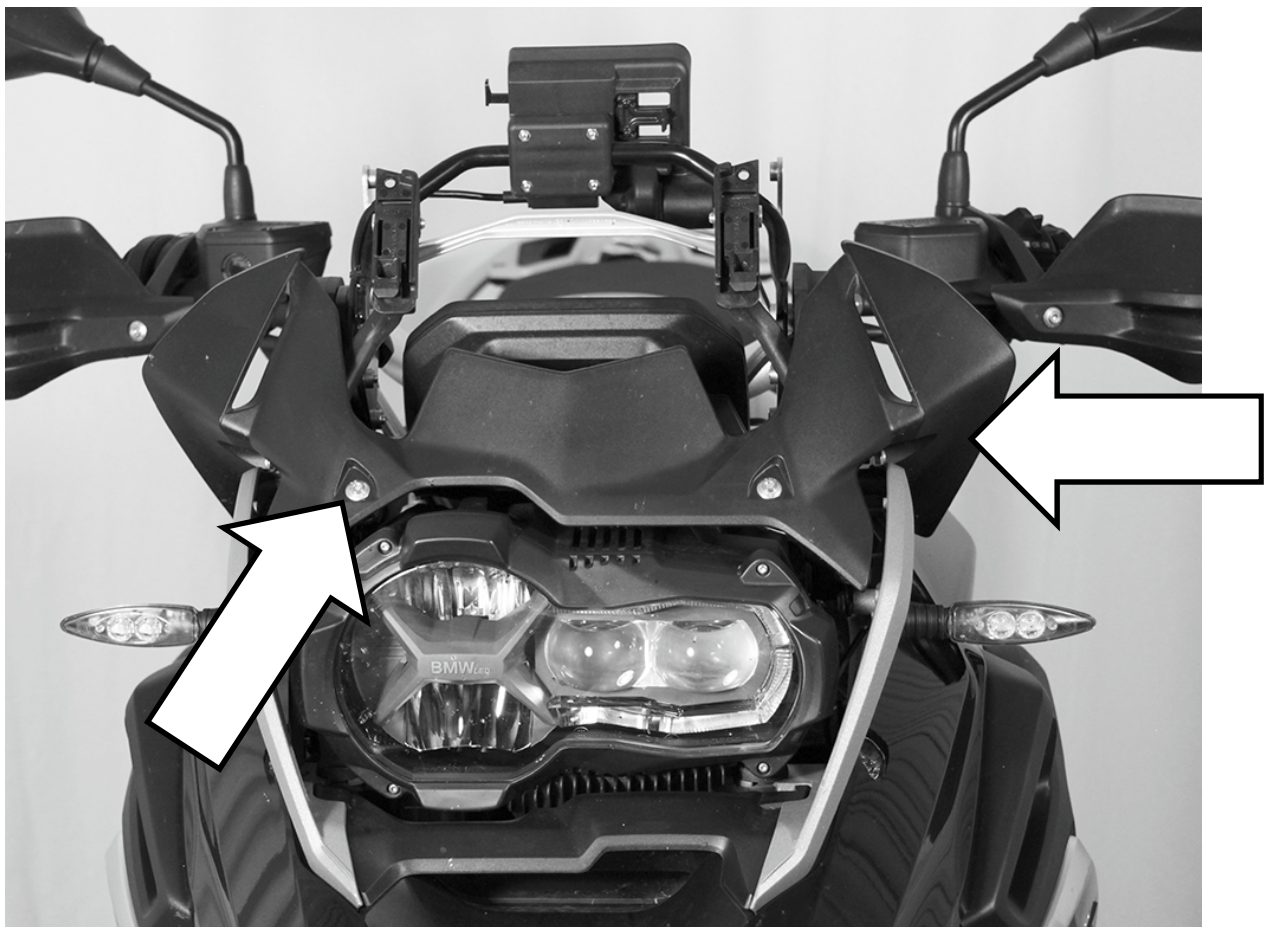
With the thumbscrews tightened, you can't adjust the height of the windscreen.

Please note: while driving, the thumbscrews must be firmly tightened. To adjust the height of the windscreen, the thumbscrews must be loose.

After installation, check that all of the screws are tight; tighten them up if necessary. Repeat this at regular intervals. Clean the screen with water, neutral soap and a sponge. Do not use solvents, alcohol or spirits to clean the screen as they will damage it.



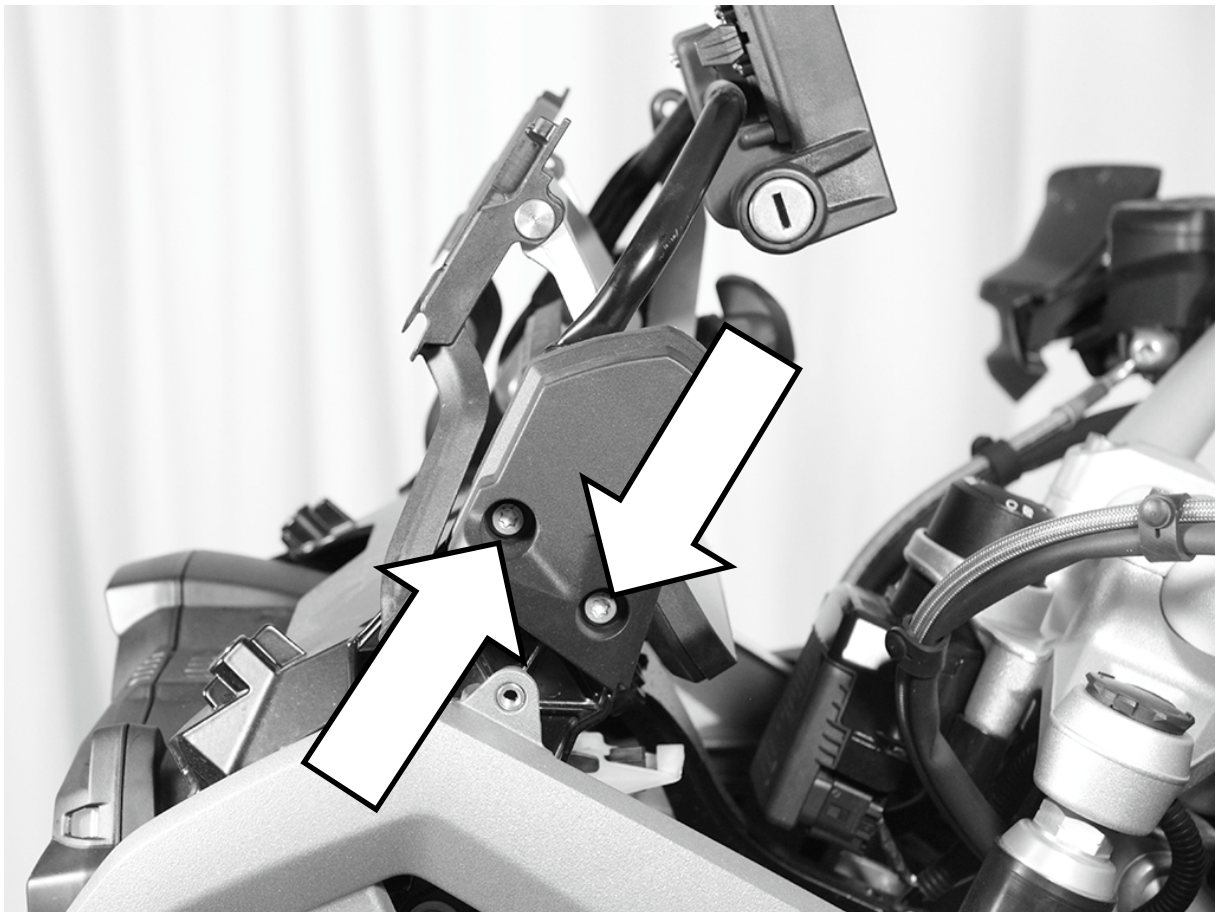
P1



P2



P3



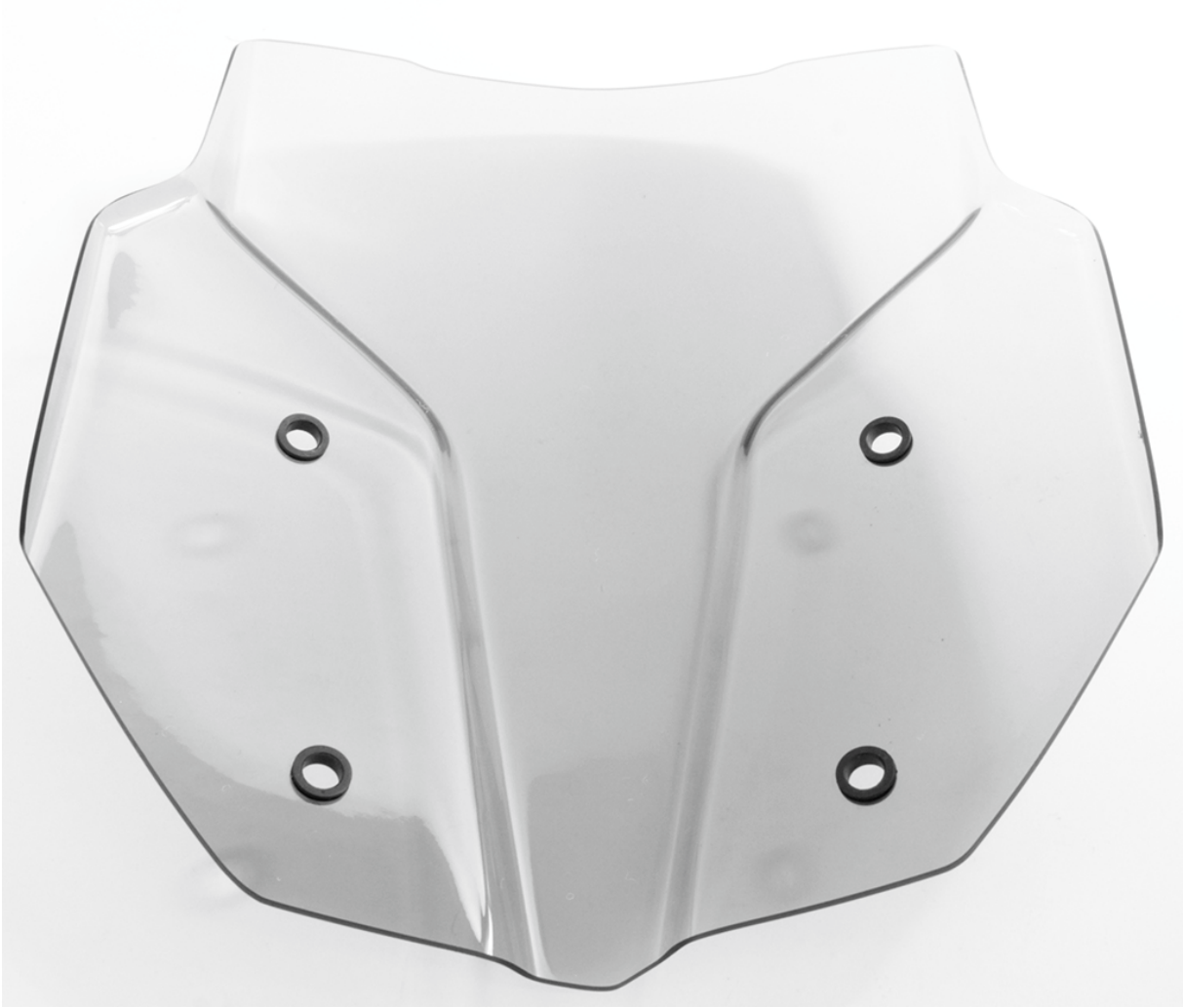
P4



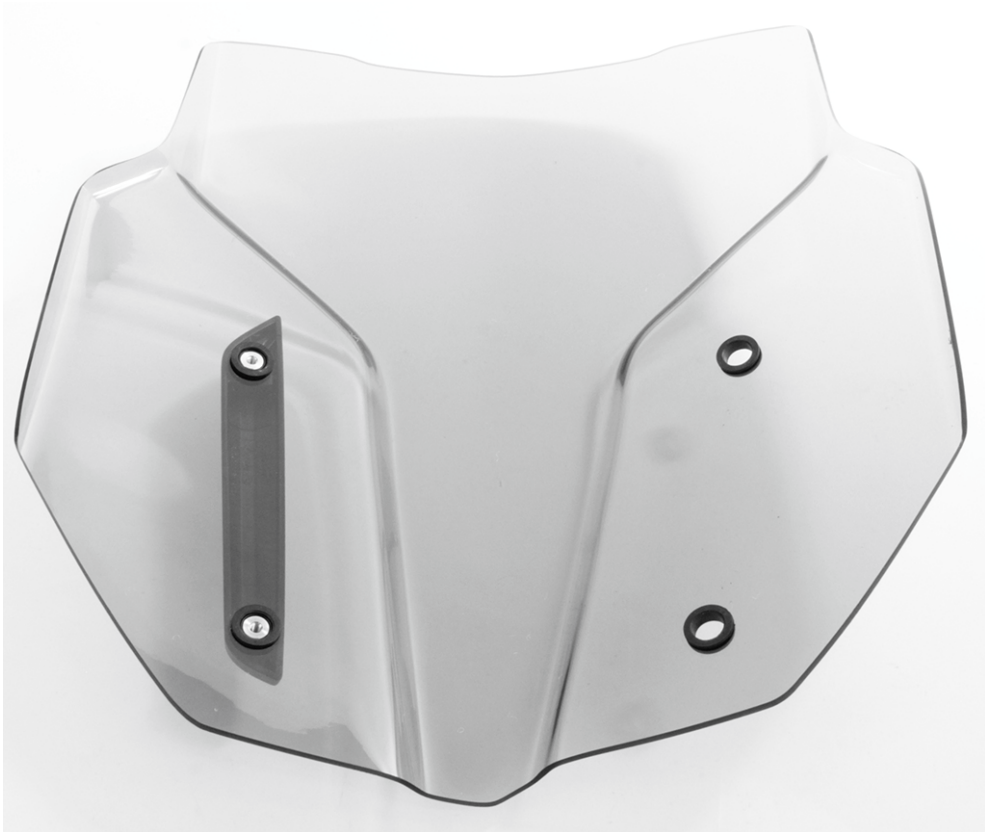
P5



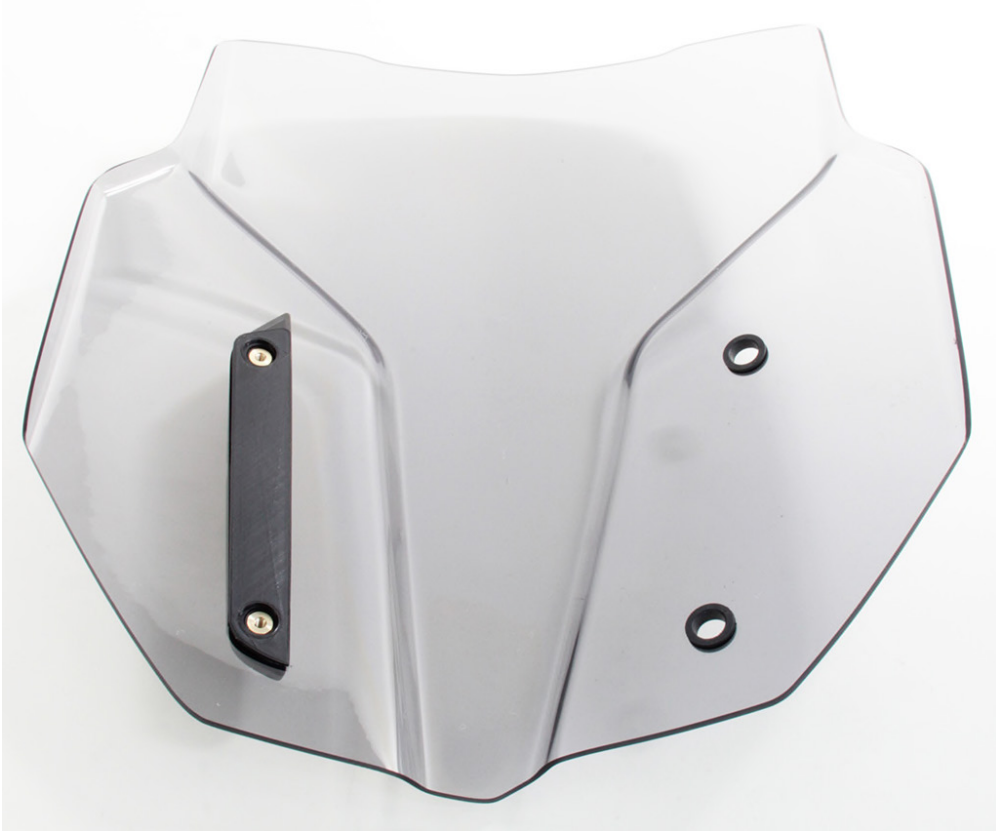
P6



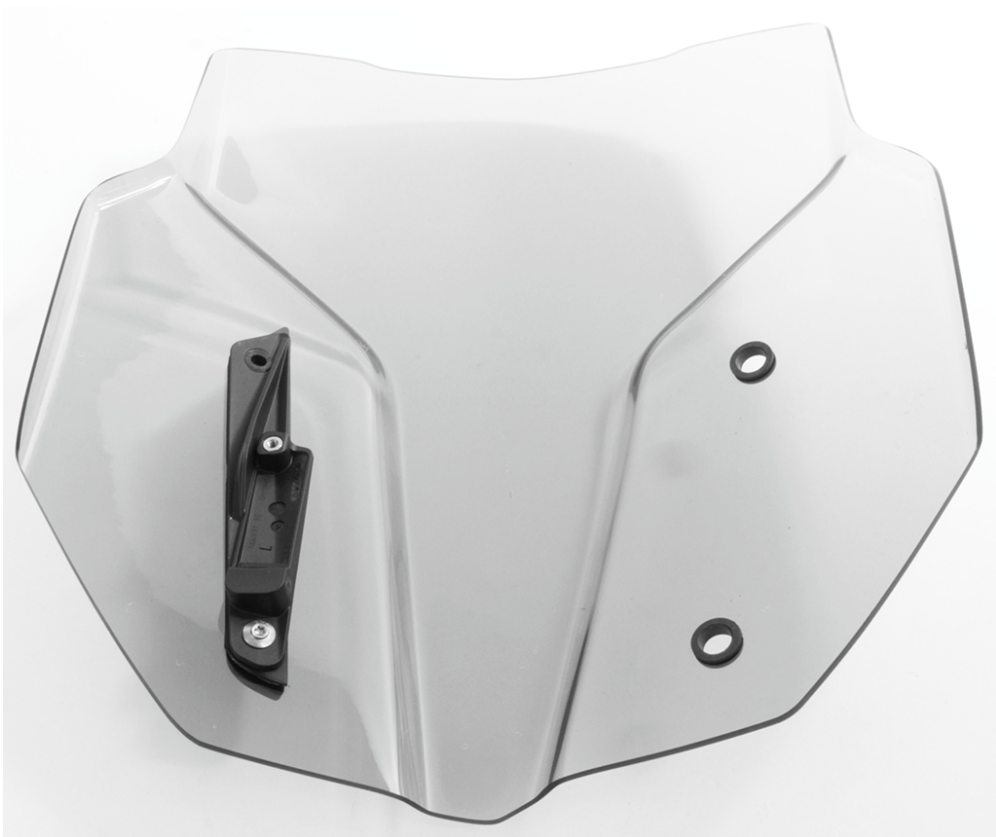
P7



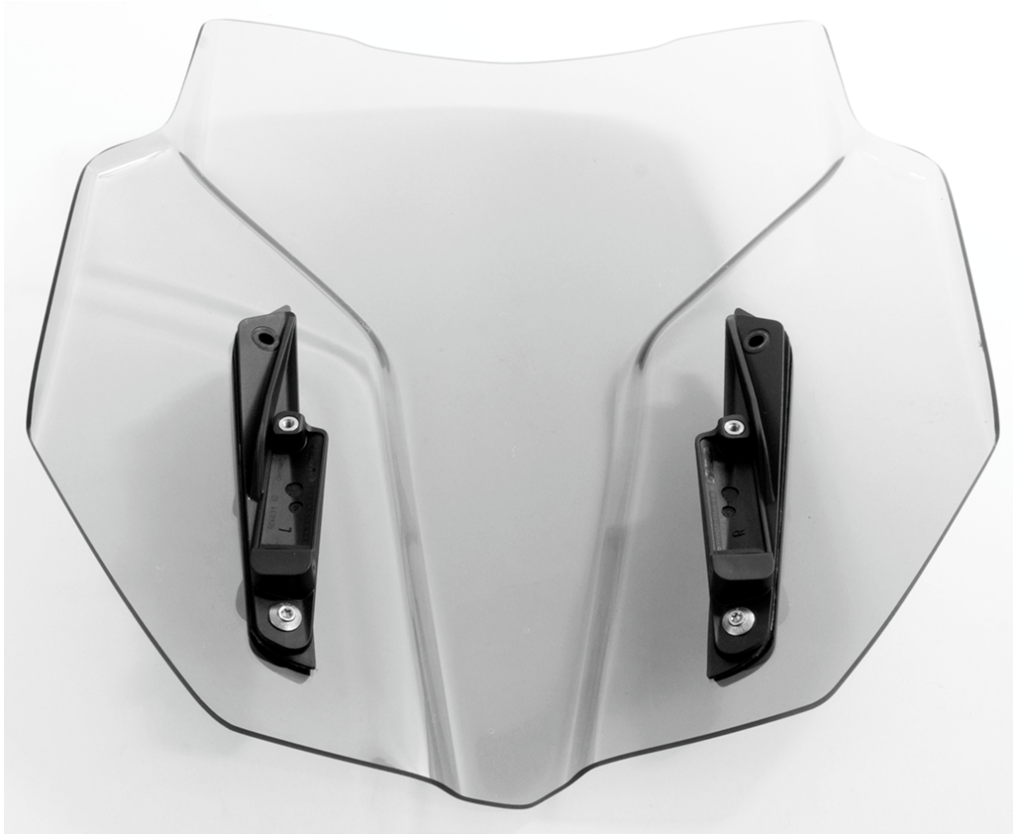
P8



P9



P10



P11



P12



P13



MRA puts everything within reach.

Check out the collection of motorcycle windshields & fairings we offer.