



## **INSTALLATION INSTRUCTIONS**

# **KAWASAKI Z900RS 2018- (NSP, NT)**

# INSTALLATION INSTRUCTIONS

## *Kawasaki Z900RS 2018-*

*Thank you for buying a MRA Windshield.*

*Read this manual carefully and check the parts list for completeness before you begin. We recommend that you have your screen fitted by an authorised workshop.*

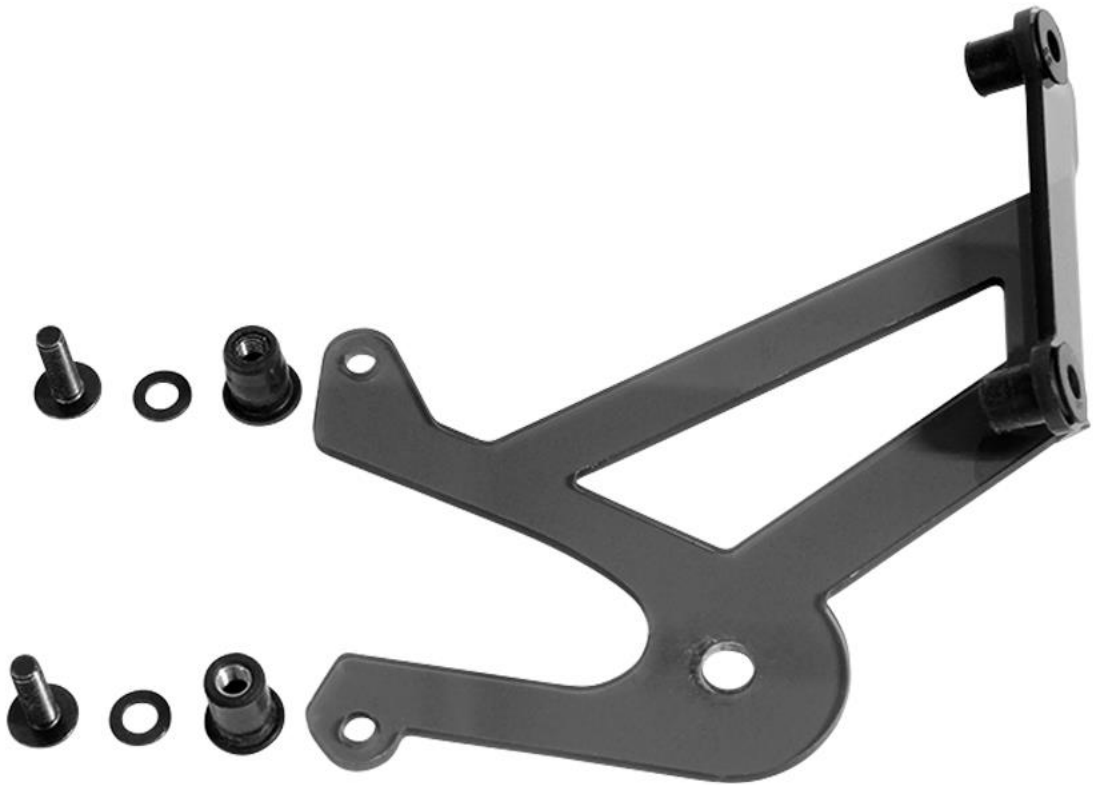
Number	Article	Article No..	Required tools
1	MRA windshield	---	Allen key 3mm, 4mm, 5mm
1	Holder, 1 pair	11331	Wrench 12mm
8	Oval-head screws, black, M5x16mm	10554	Open-end spanner 12mm
4	Plastic washers, 12x5x0.5mm	10635	Cross head screwdriver
4	Washers, black, 5.3mm	10999	
8	Elastic nuts M5	10629	

1. Preparation: Install the provided elastic nuts [10629] with the M6x16mm oval-head screws [10554] and the 5mm metal washers [10999] at the MRA support plates [11331]. (P1 – P3)
2. Installation at motorcycle: Place the motorcycle on a flat surface.
3. Disassemble the head lamp according to the workshop manual. Slide the MRA support plate over the lamp bracket and install the support plate with the head lamp. (P4)
4. Reinstall all parts of the head lamp in reverse order. Firmly tighten all screws  
**Important!** Do not adjust the head lamp too high as other road users might be blinded!
5. Insert the provided elastic nuts into the support plates. (P5)
6. Now, install the MRA windshield with the provided M5x16mm oval-head screws [10554] and the plastic washers [10635] at the support plates [11331].
7. Centrally align the windshield and firmly tighten the screws.

**After installation, check that all of the screws are tight; tighten them up if necessary. Repeat this at regular intervals. Clean the screen with water, neutral soap and a sponge. Do not use solvents, alcohol or spirits to clean the screen as they will damage it.**



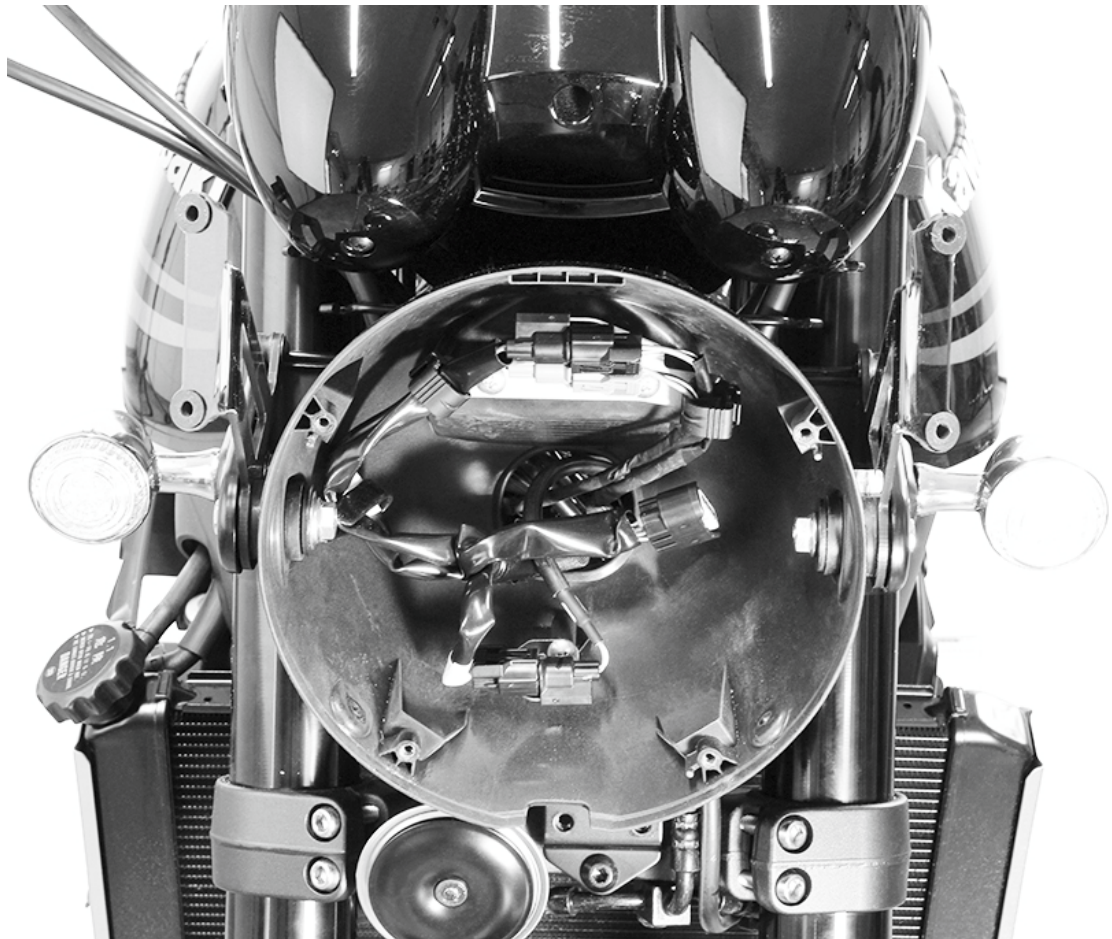
P 1



P 2



P 3



P 4



P 5







## **INSTALLATION INSTRUCTIONS**

# **KAWASAKI Z900RS 2018- (NTM)**

# INSTALLATION INSTRUCTIONS

## *Kawasaki Z900RS 2018-*

*Thank you for buying a MRA Windshield.*

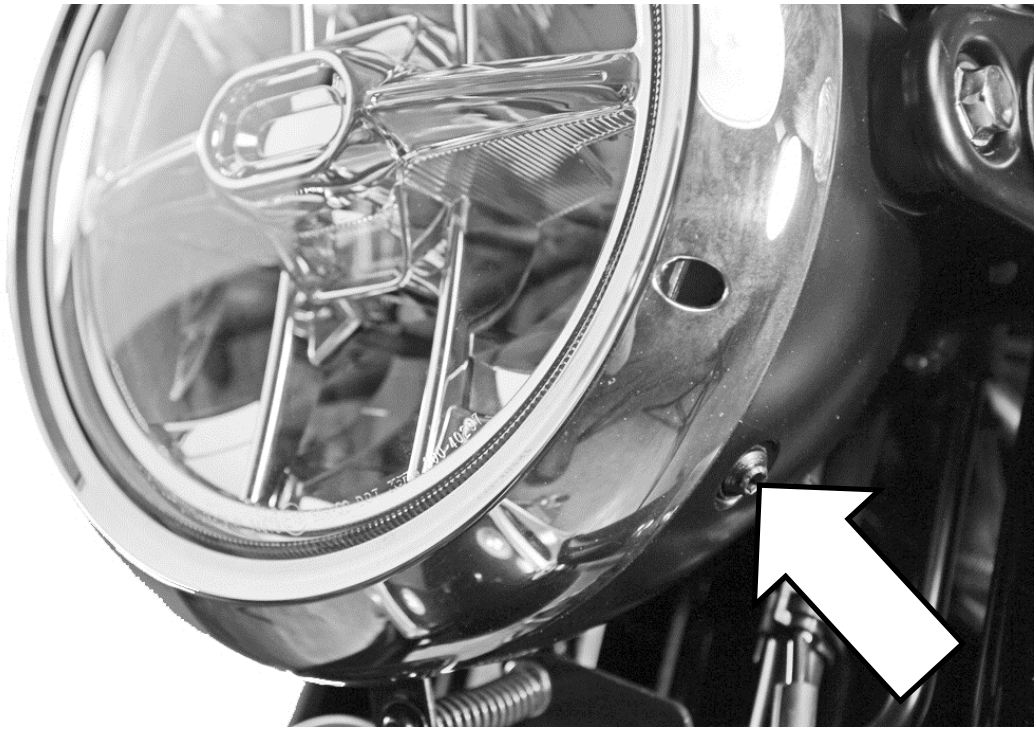
*Read this manual carefully and check the parts list for completeness before you begin. We recommend that you have your screen fitted by an authorised workshop.*

Number	Article	Article No..	Required tools
1	MRA windshield	---	Allen key 3mm, 4mm Wrench 12mm Open-end spanner 12mm Cross head screwdriver
1	Holder, 1 pair	11323	
4	Elastic nuts M5	10629	
4	Plastic disc, 12x5x0.5mm	10635	
4	Lens head screws, M5x20mm	10673	
4	Distance sleeves 3mm	10872	
4	O-rings, 4.5x1.5	10992	
4	Flat headed screws M6x10mm	11291	
4	Washers 13x6 x0.5mm	10669	

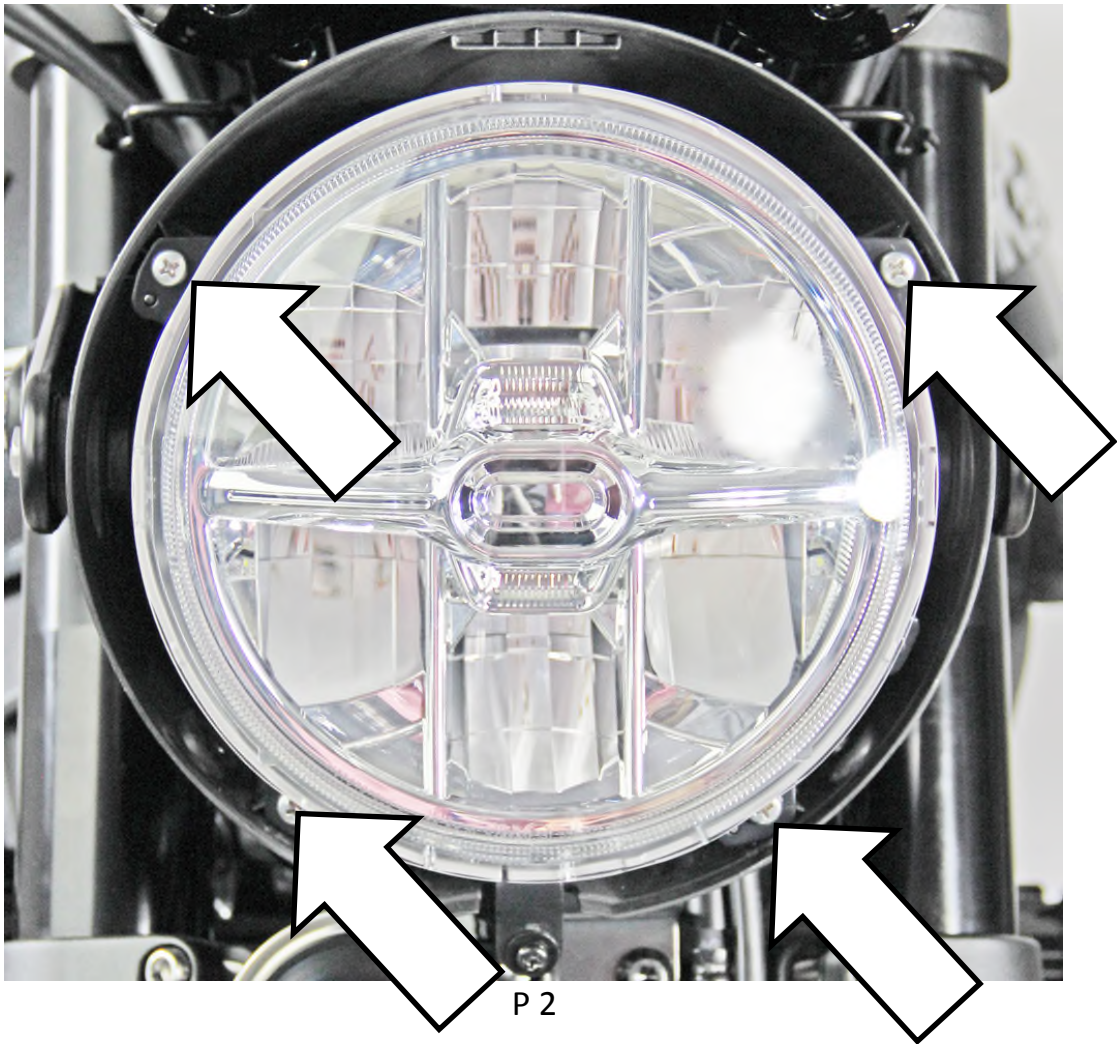
### **Fitting the screen to the motorcycle:**

1. Place the motorcycle on a flat surface.
2. Remove the chromium lamp ring (P1 + P2).  
**Important!** Prior to dismantling the lamp unit, measure the size for the height adjustment of the head lamp to ensure that the head lamp has the correct height after assembly (P3).
3. Dismantle the head lamp (P4) and then the head lamp housing (P5).
4. Mount the supplied holding plates to the motorbike using the M6x10mm screws and the washers and tighten the screws (P5).
5. Now assemble the head lamp housing to the motorbike and tighten the attachment screws. Connect the head lamp to the cable harness and mount it to the head lamp housing. Adjust the head lamp to the distance measured before (P6).  
**Important!** Do not adjust the head lamp too high – other road users might be blinded.
6. Now remount the chromium lamp ring to the head lamp.
7. Insert the M5x20mm lens head screws including the plastic washers and the 3mm distance sleeves in the MRA windshield (P7).
8. Mount the MRA windshield to the motorbike and tighten the screws (P8).
9. Finally check the light system for proper function.

**After installation, check that all of the screws are tight; tighten them up if necessary. Repeat this at regular intervals. Clean the screen with water, neutral soap and a sponge. Do not use solvents, alcohol or spirits to clean the screen as they will damage it.**

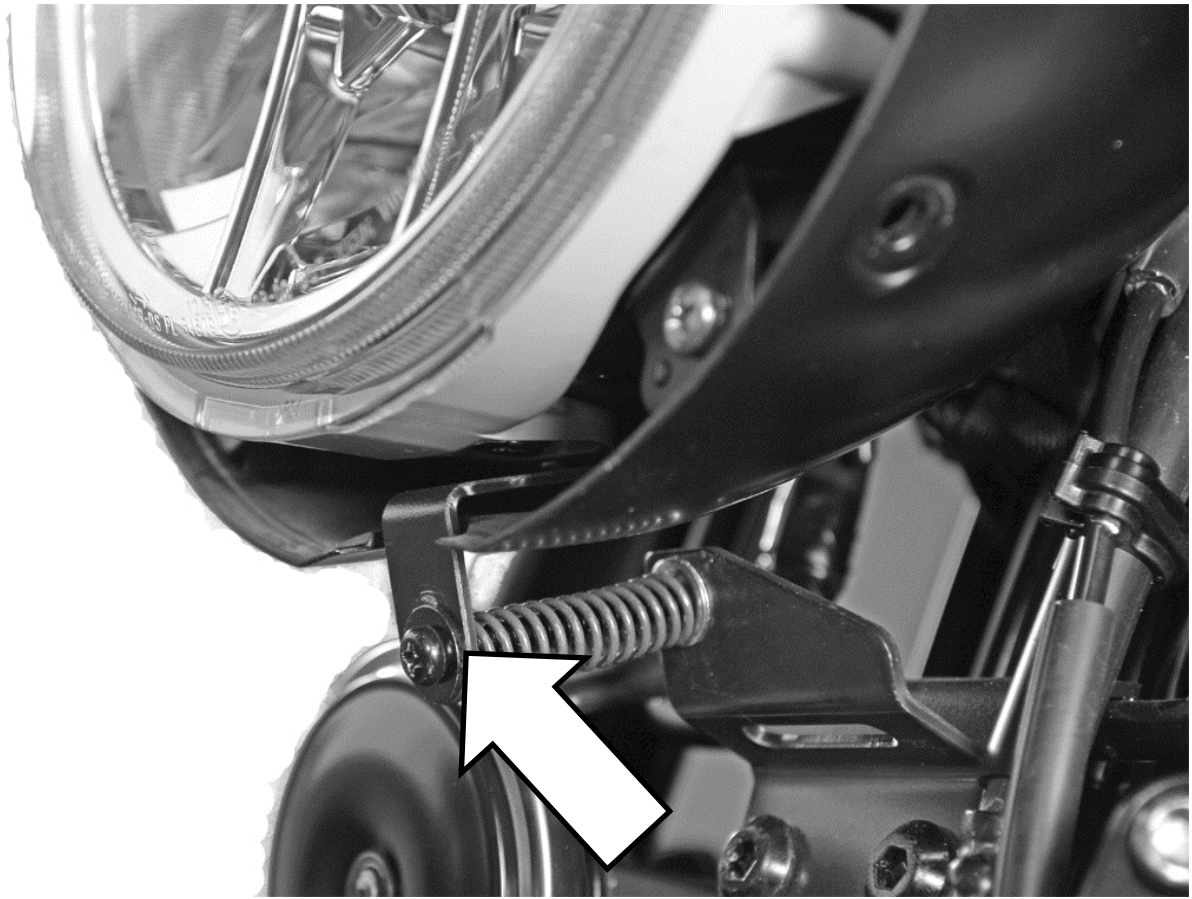


P 1

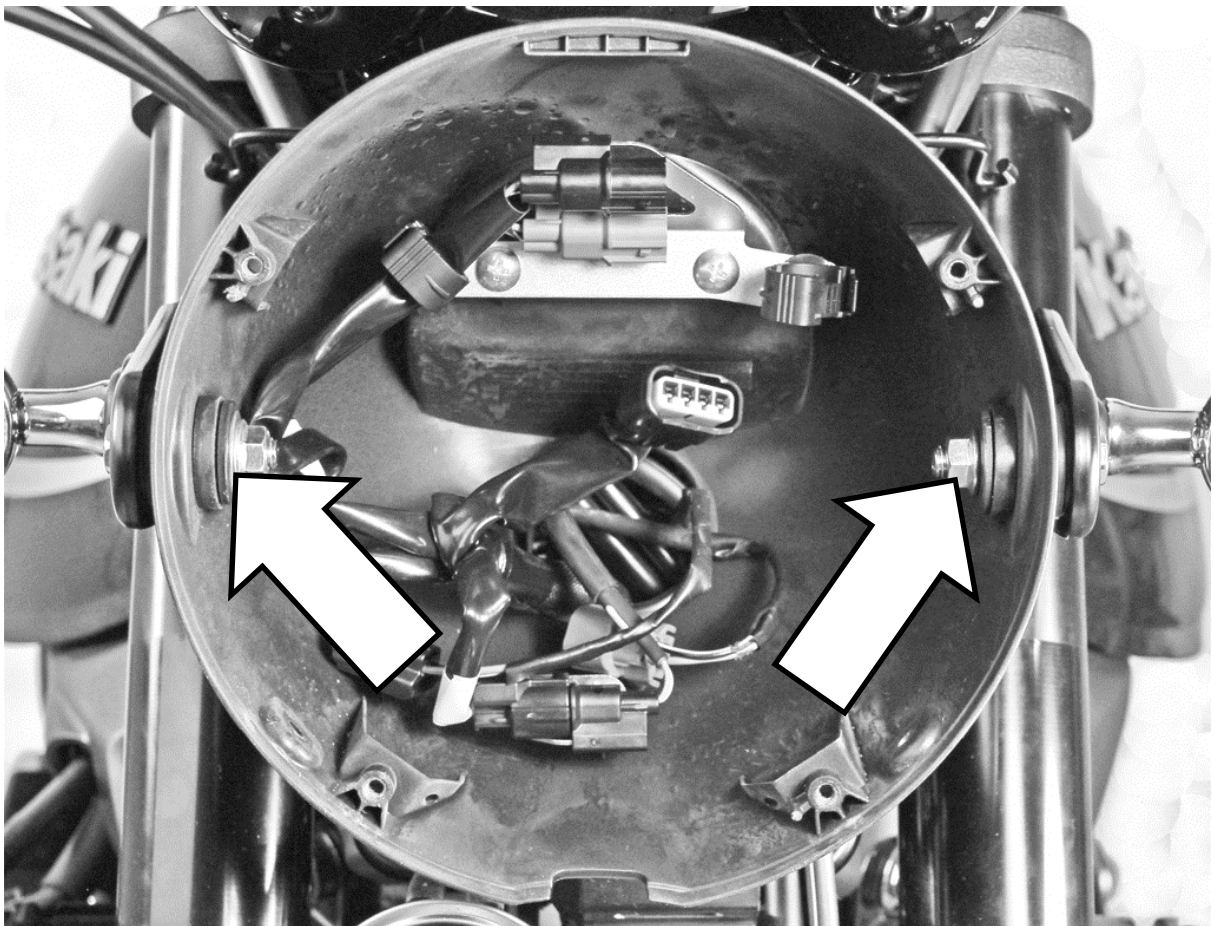


P 2

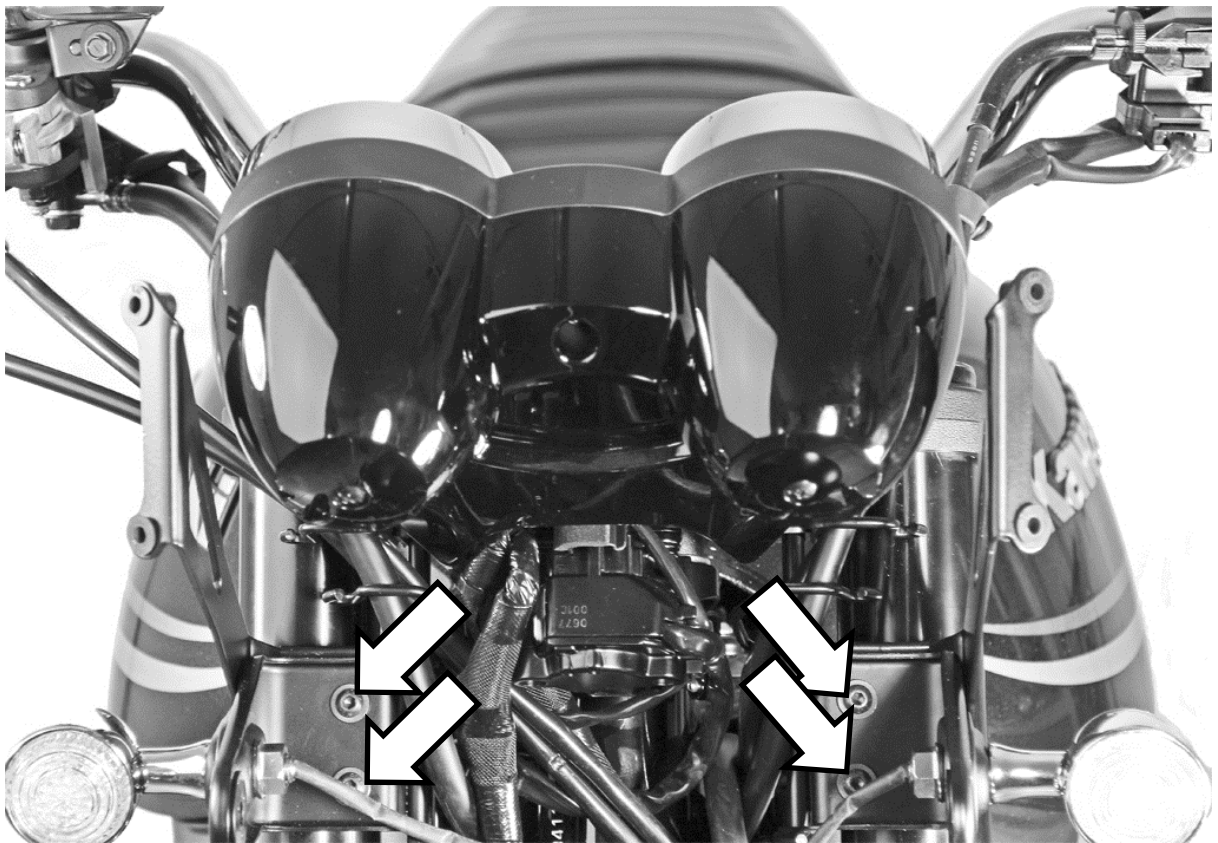




P 3



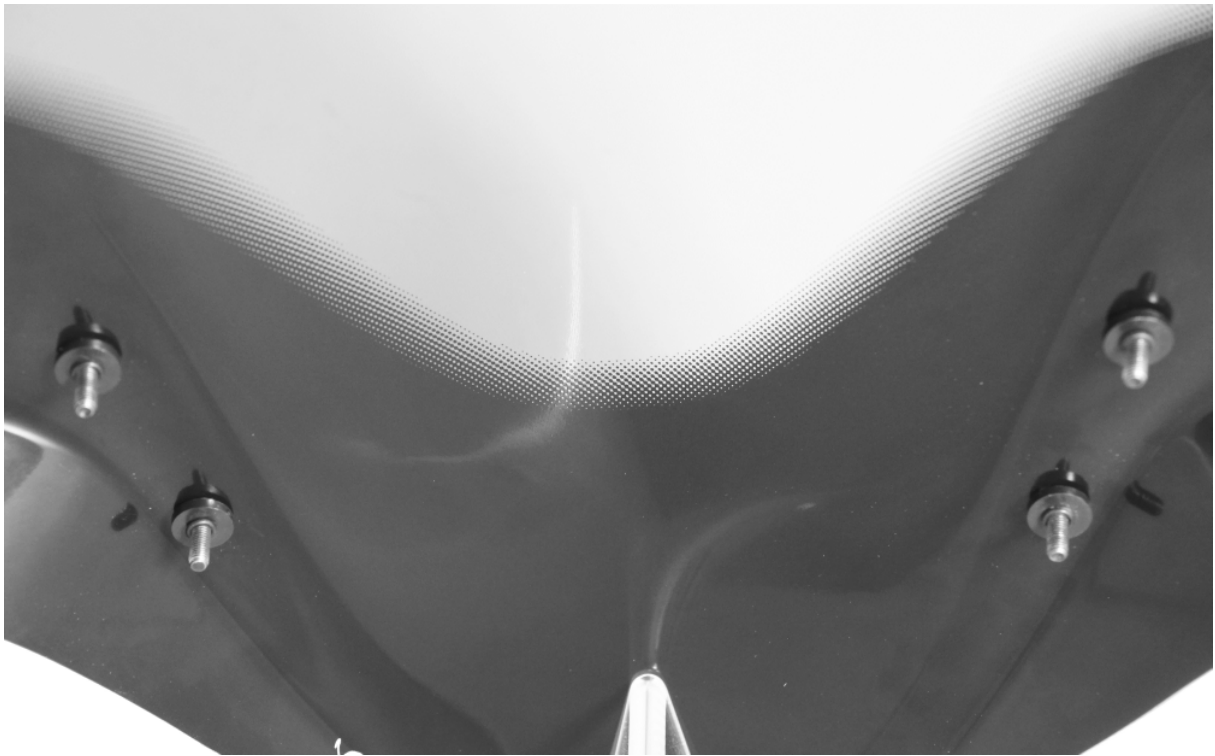
P 4



P 5



P 6



P 7



MRA puts everything within reach.

Check out the collection of motorcycle windshields & fairings we offer.