



INSTALLATION INSTRUCTIONS

YAMAHA

Tracer 900 / GT

2018-

© by MRA-Klement GmbH – 05/2018 4025066163113

INSTALLATION INSTRUCTIONS

Tracer 900/GT

Thank you for buying a MRA Windshield.

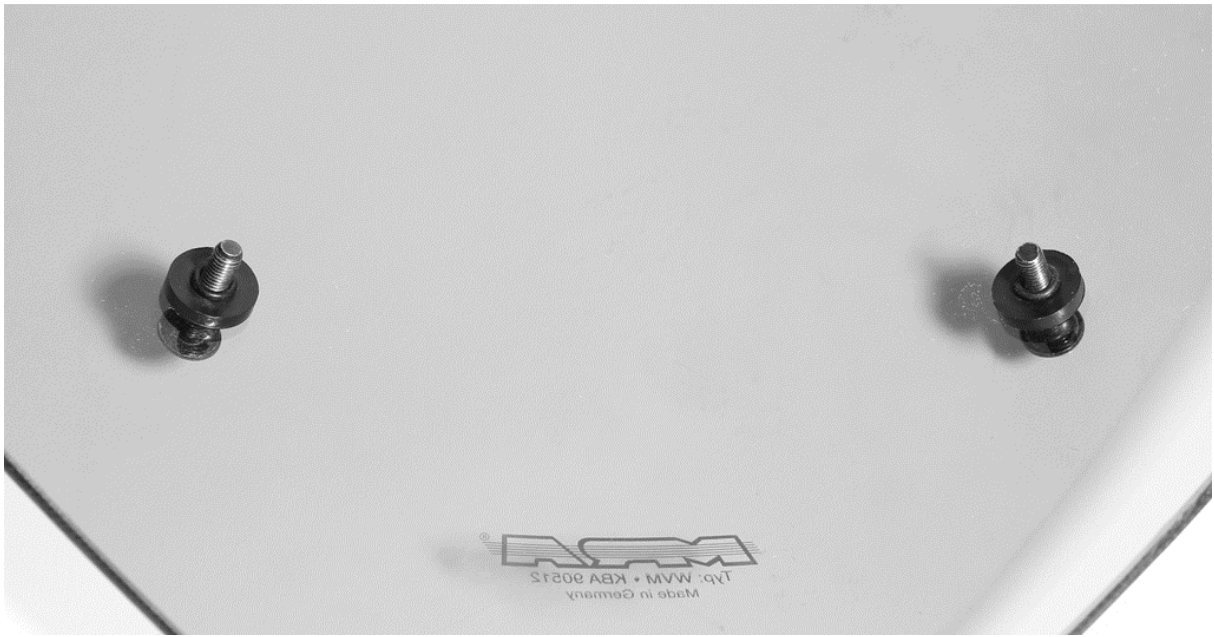
Read this manual carefully and check the parts list for completeness before you begin. We recommend that you have your screen fitted by an authorised workshop.

| Number | Article | Article No.. | Required tools |
|--------|--|--------------|------------------------|
| 1 | MRA screen | --- | Phillips screwdriver |
| 2 | Oval head screws, black, M5 x 20 mm | 10673 | Allen key, 3 mm |
| 2 | Oval head screws, black, M5 x 25 mm | 10641 | General-purpose pliers |
| 4 | Plastic washers, 12 x 5 x 0.5 mm | 10669 | |
| 2 | Spacers, 3 mm | 10872 | |
| 2 | O-rings | 10992 | |
| 1 | Edge protection strip with end sleeves | --- | |

How to mount the screen onto your motorbike:

1. Stand your motorbike up on a level surface.
2. Dismantle the original screen.
3. Insert the M5 x 25 mm oval head screws [10641] with the plastic washers and 3 mm plastic spacers [10872] through the lower holes on the MRA screen. Use the O-rings as an aid (P1).
4. Now mount the MRA screen onto your bike. Secure the screws in the lower holes, but do not tighten up yet. Now insert the M5 x 20 mm oval head screws [10673] with the plastic washers [10669] through the upper holes in the MRA screen, and tighten up the screws on the upper and lower side of the fastening.
5. Mount the edge protection strip onto the screen as shown in P2. Slide the end sleeves over the end of the edge protection strip, and secure the strip by gently crimping the sleeves with a pair of pliers.

After installation, check that all of the screws are tight; tighten them up if necessary. Repeat this at regular intervals. Clean the screen with water, neutral soap and a sponge. Do not use solvents, alcohol or spirits to clean the screen as they will damage it.



P 1



P 2

Functional Description

Variotouringscreen VT

Thank you for purchasing a Variotouringscreen. Please carefully read these instructions. You will get the most out of the adjustable spoiler if you thoroughly understand its features.

The spoiler serves to reduce air pressure on the rider's helmet and upper body without causing disturbing air turbulence.

The spoiler has six different positions, enabling the rider to make adjustments to suit his needs.

The higher the spoiler is set, the more air will flow between the spoiler and the windscreen.

The airflow speed is reduced by means of the angle that opens in the direction of the rider, thereby providing at higher speeds the same relaxed atmosphere that a rider experiences at slow speeds.

- Raise the spoiler by manually pressing (Fig. 1) or pulling (Fig. 2) it upward, parallel to the windscreen.
- To make the spoiler flatter, push it downward in the direction of travel. (Fig. 3)

While adjusting the spoiler, make sure that it remains in the same position to the right and left.

Attention! Never attempt to adjust the spoiler while riding. The distraction will greatly increase the risk of accident!

VARIOTOURINGSCREEN FOR NAKED-BIKES:

- Recommended installation angle: 40-50°
- Recommended installation position: 10 - 20 mm gap to lamp.

Figure 1



Figure 2



Figure 3

