

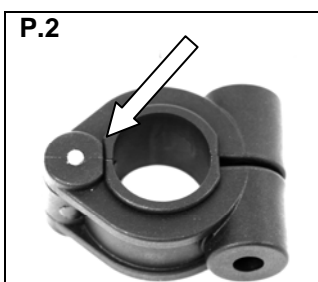
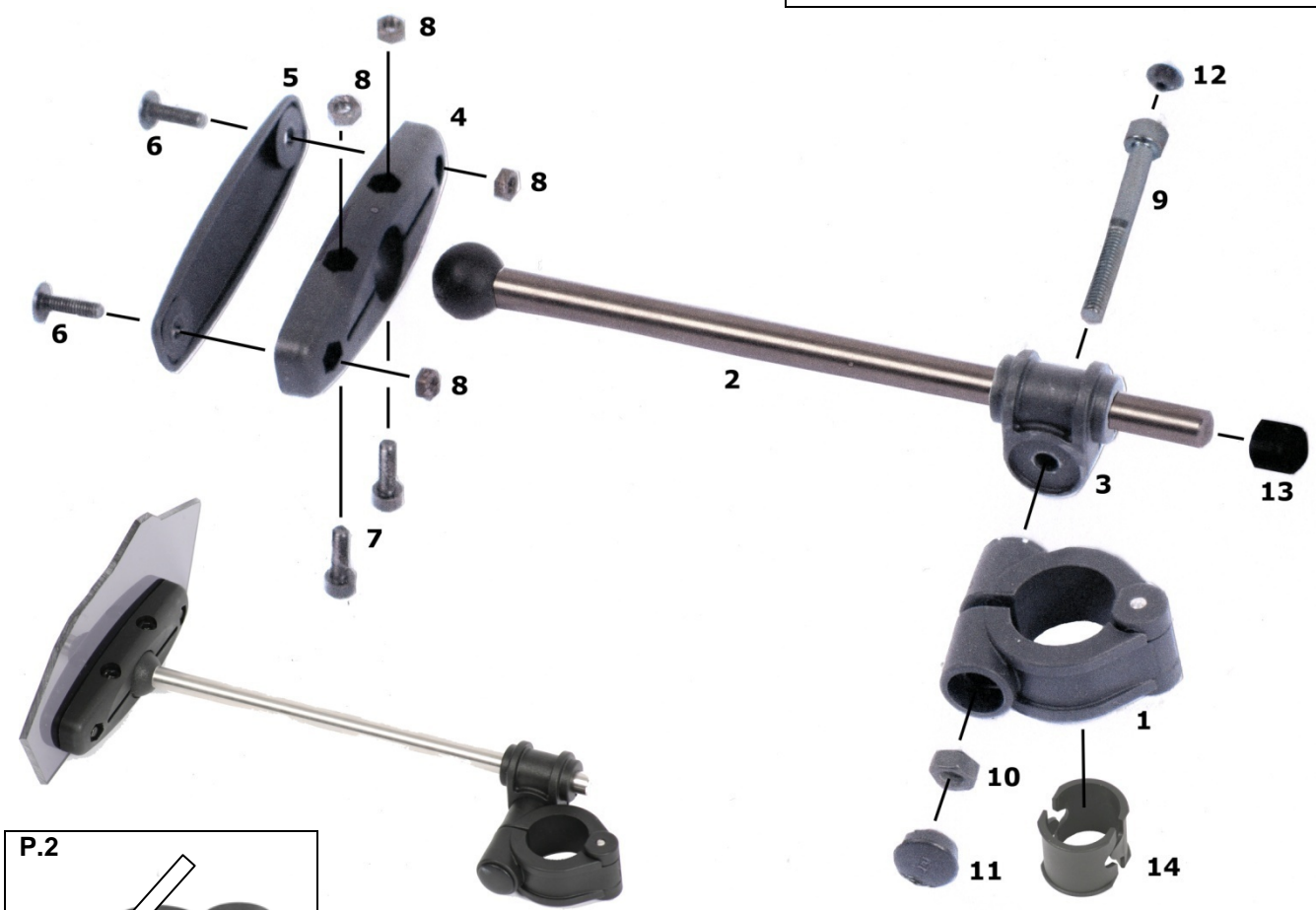
MRA[®]

MOTORCYCLE WINDSHIELDS

Installation instruction



Assembly instructions – HK windscreen mounting kit



**Assembly instructions –
HK windscreen mounting
kit**

We thank you for choosing an MRA product.

In order to ensure trouble-free assembly, please read these instructions carefully.

No.	Component list
1.	Handlebar clamp 25mm (1-inch)
2.	Ball-joint bar
3.	Bar clamp
4.	Ball clamp
5.	Cover
6.	M5 x 16 lenshead screw
7.	M5 x 16 hexagon socket-head cap screw
8.	M5 nut
9.	M6 x 55 hexagon socket-head cap screw
10.	M6 nut
11.	Nut cap
12.	Screw cap
13.	Bar cap
14.	22 mm (7/8-inch) reducer

- 1.) Push the ball-joint bar [2] into the ball clamp [4].
- 2.) Insert the nuts [8] into the lateral hexagonal inserts in the ball clamp and gently screw the socket-head cap screws [7] (but do not tighten these yet).
- 3.) Attach the ball-joint bar [2] with the ball clamp [4] and the cover [5] to the windshield. For this, use the lenshead screws [6] and nuts [8] and tighten these firmly.

WARNING: Assemble the VTNB and SPS windshields using the ball clamps in such a way that the screw-heads face inwards (towards rear of the motorcycle), and all other windshields face outwards (towards the front of the motorcycle).

- 4.) Now hold the windshield up to the motorcycle handlebars and determine the optimal position for the handlebar clamps [1] and bar clamps [3].
For a 22 mm handlebar, use the reduction pieces [14] inside the clamps [1]. Make sure that the recesses of the reduction links fit exactly with the hinges of the clips (Fig. 2).
Position the bar clamps [3] in their desired position on the bars and tighten the socket-head cap screws [9] and the nuts [10] on the clips. Do not tighten the screws excessively.
- 5.) Position the windshield in the desired position (VTNB approx. 45°, all others approx. at the fork angle) and tighten the screws lightly on the clamps (which screws? Which clamps? This is unclear).
Ensure that the instruments are not covered.
Check that the windshield and mounting hardware do not hit the instruments or other fixed parts of the motorcycle when turning the handlebar right or left. (If the ball-joint bars [2] protrude too far to the rear over the clamps [3?], you can dismantle the mounting kit and shorten the ball-joint bars). Position the windshield symmetrically and tighten the screws on the clamps [which clamps?] and tighten the ball clamps [4]. Then apply the caps [11, 12, 13].

Check to make sure the screws are tight on a regular basis.

We wish you many hours of fun with your new MRA Windshield.

Your MRA Team