

MICHELIN

COMMANDER II

Cruiser/Custom

The MICHELIN tire for all types of cruisers, offering more longevity without compromising stability and handling.



Why choose MICHELIN Commander II?



Proven Longevity

MICHELIN Commander II can last for up to 25,000 miles in back¹. A new standard in longevity!

No Compromise on Stability and Maneuverability

Thanks to its high-density and therefore stiffer frame (MICHELIN Amplified Density Technology), MICHELIN Commander II features premium handling and responsiveness. The top layers in rear tires are made of aramid fibers, which combine resistance and a lightweight feel for perfect stability, even at high speeds.



Excellent Grip on Wet Surfaces

An brand new longitudinal tread provides outstanding water evacuation, and thus excellent grip on wet surfaces.

Innovative Look

A radically different design for an explosive look. A "premium" sidewall finish gives your motorcycle an immaculate appearance.

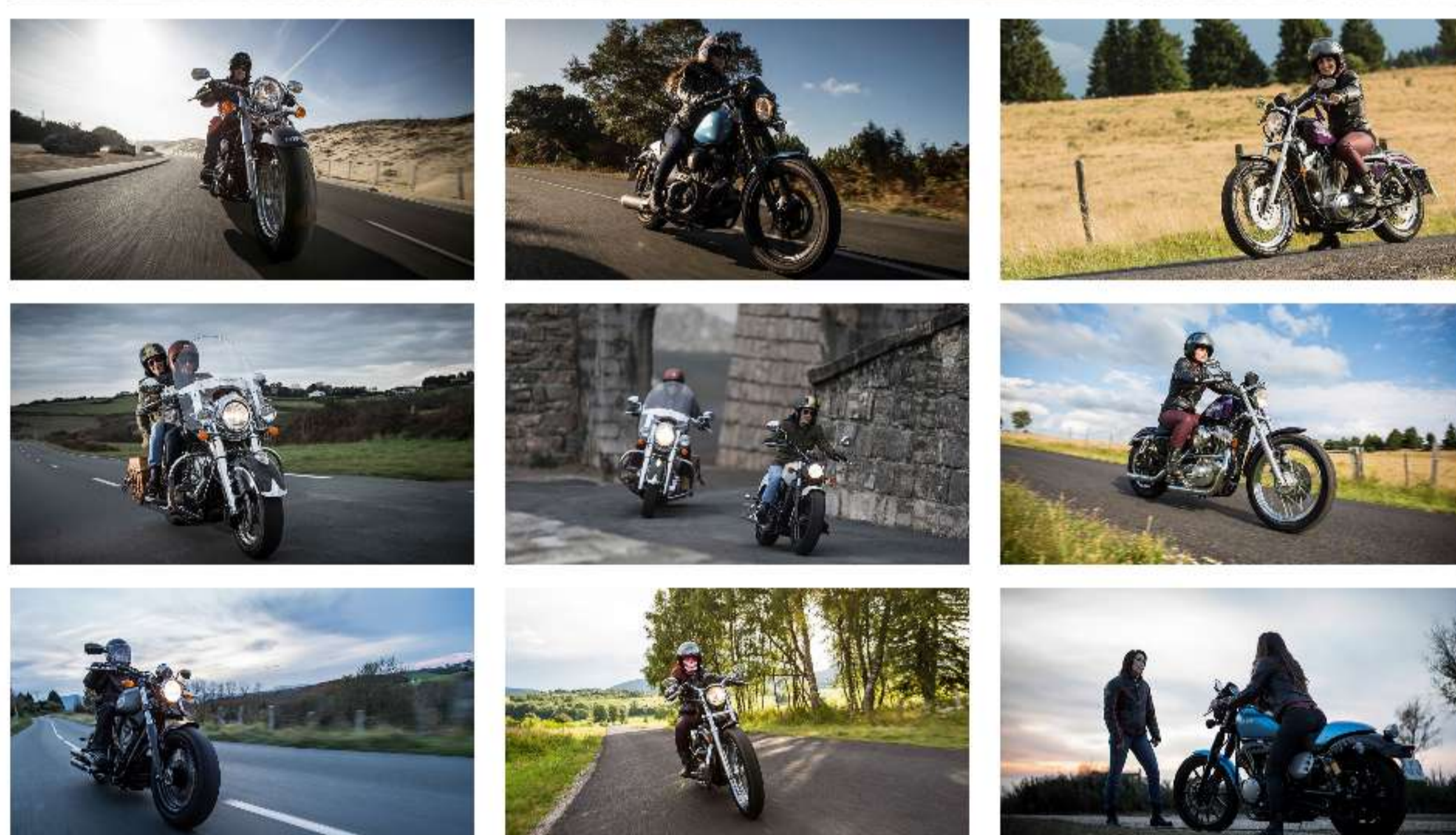


Michelin always aims to bring together multiple performances.

At Michelin, we never work on one isolated element of performance. Instead, we focus on the whole package: safety, durability and the thrill of riding... all at the same time and with no trade-offs. That's what we mean by MICHELIN® Total Performance™.



MICHELIN Commander II



Size details for versions of COMMANDER II

33 available versions for the MICHELIN COMMANDER II

Size
180/70 B15 76H
140/75 R15 65H
170/80 B15 77H
140/90 B15 76H
150/90 B15 74H
MT90 B16 72H
MT90 B16 74H
MU85 B16 77H
180/65 B16 81H
150/80 B16 71H
150/80 B16 77H
130/90 B16 73H
140/90 B16 77H
200/55 R17 78V
160/70 B17 73V
140/75 R17 67V
100/80 -17 52H
130/80 B17 65H
140/80 B17 69H
120/90 B17 64S
240/40 R18 79V
180/55 B18 80H
130/70 B18 63H
150/70 B18 76H
110/90 B18 61H
130/60 B19 61H
120/70 ZR19 60W
100/90 B19 57H
110/90 B19 62H
MH90 -21 54H
120/70 B21 68H
80/90 -21 54H
90/90 -21 54H