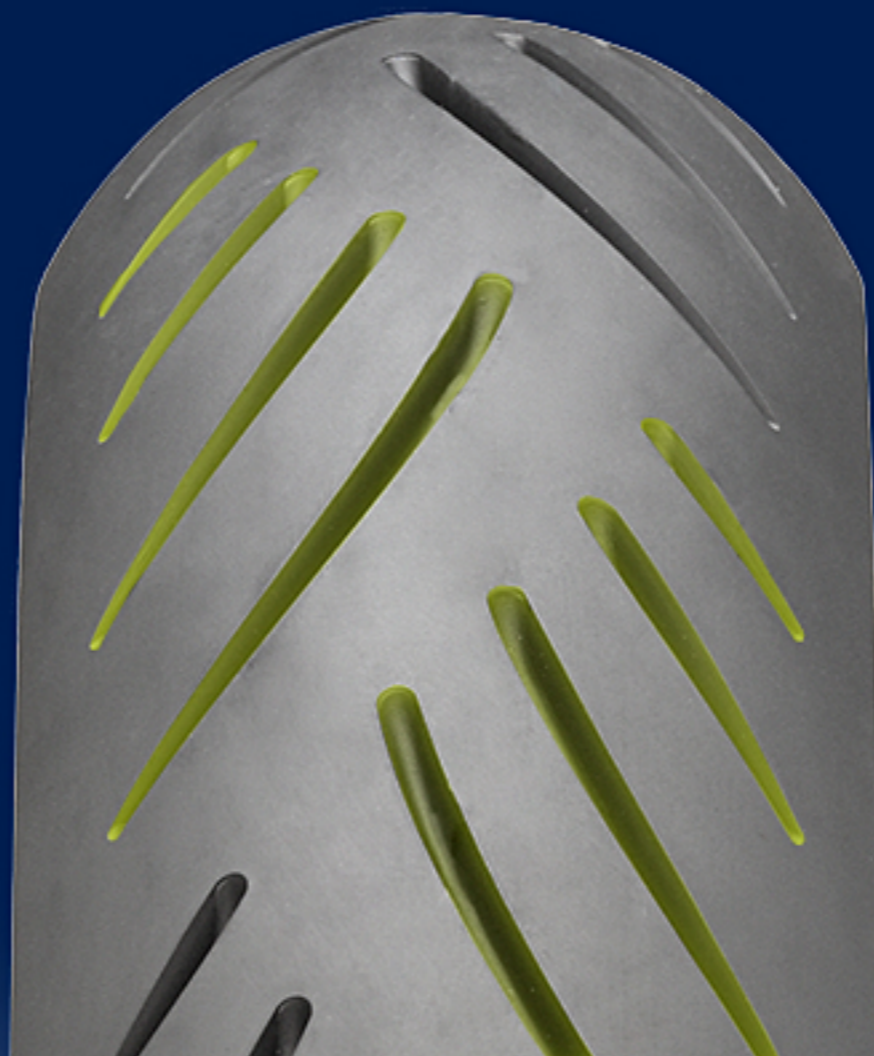


Details

Front



Rear



Grooves geometry in parallel lines:

- ▶ Top efficiency in dispersing water
- ▶ Water is pushed away from contact patch
- ▶ Increased traction when accelerating
- ▶ Higher land/sea ratio

Details

Front

Rear



Balanced silica and carbon black single compound with resins for both front and rear:

- ▶ Quick warm up
- ▶ Wet behavior