

new product:

Charge Pro® Chargers



FINISHING

MARINCO®

**CHARGE
PRO®**



MARINCO®

new product:

Charge Pro® Battery Chargers

Marinco® has taken the best of their former Guest brand waterproof chargers and has added a host of new features and technology for ultimate performance and longevity in the marine environment. Digital microprocessor controlled, the Charge Pro® chargers provide fast, accurate, efficient and full battery charging. They automatically monitor battery power and begin the charge cycle when power is low or every 14 days. Charge Pro® features include universal input (90-265V AC), IP65 rating, for flooded lead acid or AGM batteries. These new chargers meet stringent industry standards including UL, ABYC, USCG and the new CEC standard.

Charge Pro® Battery Chargers

These new onboard chargers have the same housing and mounting dimensions as our traditional Charge Pro® Guest chargers with a number of performance enhancements.

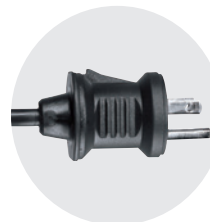
- For use with flooded or AGM batteries
- Microprocessor controlled for accurate charging
- Universal input 120/230V for go-anywhere freedom
- Isolated outputs
- Outputs can be put in series or parallel for higher voltage or current
- Completely sealed, epoxy filled
- IP68 waterproof
- Designed for harsh marine and industrial environments—moisture, salt, shock and vibration tested
- Non corroding housing for ultimate reliability
- Meets global industry standards including UL, CSA, ABYC, FCC, California efficiency regulations (CEC)
- Footprint and mounting holes are same as former Charge Pro® Guest Chargers
- ConnectCharge™ Plug for easy assembly to inlet (Part # 150CCI) with no wiring



New & Improved!

Formerly known as

GUEST



ConnectCharge™ Plug

Designed to snap into Marinco® inlet (Part # 150CCI) quickly and easily. The inlet (purchased separately) has a weatherproof cover and locking rings. No wiring needed.

Charge Pro® Portable Battery Chargers

The Charge Pro® Portables offer a versatile charging solution that you can take with you in your car, truck, boat, motorcycle or anywhere else you need power. Even your classic car can be charged with the 6V mode. The portables come with two sets of cables—one with ring terminals and one with alligator clips.

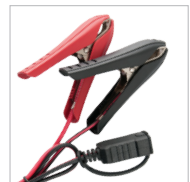
- For use with flooded, AGM and Gel batteries
- Microprocessor controlled for accurate charging
- Intuitive operation
- IP65 weatherproof housing
- 120/230V AC 50/60Hz input
- Models: 6/12V, 1.1 Amp & 4.3 Amp
- Designed for harsh marine and industrial environments—moisture, salt, shock and vibration tested
- Meets global industry standards including UL, CSA, ABYC, FCC, California efficiency regulations (CEC)
- 4 ft DC cable connects to 2 ft lead with ring terminals or 2 ft lead with alligator clips (both included)



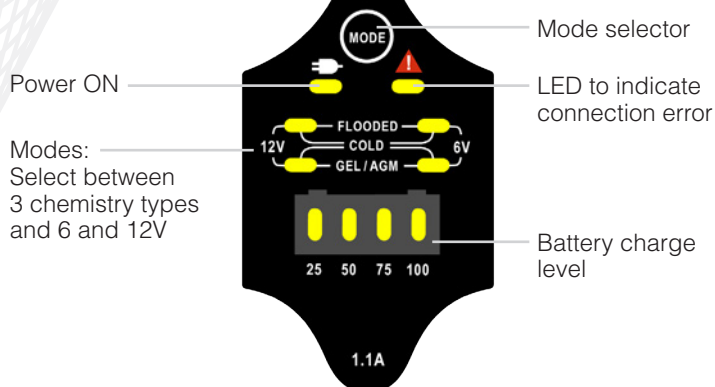
RoHS IP65



included



Easy to read label



new product:

Charge Pro® Battery Chargers



NEMA 5-15P

Total Amps	Outputs	Amps per out	Battery System	Input Voltage Range	Output Voltage	GUEST Old #	Part #
6	1	6	12V	120/230V 50/60 Hz	12V	2608A →	28106
10	2	5	12V+12V or 24V	120/230V 50/60 Hz	12V	2611A →	28210
20	2	10	12V+12V or 24V	120/230V 50/60 Hz	12V	2620A →	28220
30	3	10	12V+12V+12V or 12V+24V or 36V	120/230V 50/60 Hz	12V	2631A →	28330



Portable



NEMA 1-15P

Total Amps	Outputs	Amps per out	Battery System	Input Voltage Range	Output Voltage	Part #
1.1	1	1.1	6V or 12V	120/230V 50/60 Hz	6V or 12V	27101
4.3	1	4.3	6V or 12V	120/230V 50/60 Hz	6V or 12V	27104

View [other marine batteries & power](#) made by [Marinco](#) on our website.