



# INSTALLATION

## OFFSET PEG MOUNTS

7996

### PARTS INCLUDED

- 2 Offset Peg Mount Assemblies
- 1 Installation Instructions

Please read and understand entire instructions before starting installation.

### THANK YOU FOR CHOOSING KÜRYAKYN!

IN ORDER TO PROTECT YOU AND OTHERS FROM POSSIBLE INJURY AND/OR PROPERTY DAMAGE OR LOSS, PLEASE PAY CLOSE ATTENTION TO ALL INSTRUCTIONS, WARNINGS, CAUTIONS AND NOTICES REGARDING THE USE AND CARE OF THIS PRODUCT.

#### WARNING

THIS INDICATION ALERTS YOU TO THE FACT THAT IGNORING THE CONTENTS DESCRIBED HEREIN CAN RESULT IN POTENTIAL DEATH OR SERIOUS INJURY.

#### NOTICE

This indication alerts you to the fact that ignoring the contents described herein may negatively affect product performance and functionality.

#### NOTICE

IF INSTALLING THIS PRODUCT FOR ANOTHER PARTY, PLEASE MAKE SURE THEY RECEIVE THIS COPY OF THE INSTALLATION INSTRUCTIONS SO THEY ARE AWARE OF

### TOOLS SUGGESTED

Set of Hex Wrenches, Set of Combination Wrenches, or Socket Set and Ratchet

STRICTLY OBSERVE THE FOLLOWING GUIDELINES IN ORDER TO USE THE PRODUCT PROPERLY AND AVOID POTENTIALLY DANGEROUS ACCIDENTS.

#### STEP 1

Read and understand all steps in the instructions before starting the installation. Park the motorcycle on a hard, level surface and turn off the ignition. Let cool.

#### WARNING

YOU WILL BE WORKING AROUND THE ENGINE AND EXHAUST SYSTEM DURING INSTALLATION. ENSURE THAT THE ENGINE AND EXHAUST SYSTEM HAVE FULLY COOLED TO PREVENT INJURY.

**NOTE:** These mounts are universal and require the use of footpegs equipped with H-D style "MALE" mounts. These offsets may be used with various clamps or mounted to a suitable surface with a clearance hole for a 1/2" fastener.

#### STEP 2

Referring to FIG.1, remove the 1/2" bolt and internal tooth lock washers from the Offset Arm. Set these items aside for now, they will be used to install the Offset Peg Mount.

-cont.-

## FOR USE WITH CLAMPS

Kuryakyn®

### NOTICE

Determine the mounting location and orientations of the chosen clamp before fully tightening the fasteners. The clamp may leave marks when tightened down.

#### STEP 3

Place the chosen clamp around the desired mounting point. Close the clamp; insert the bolt that was removed in STEP 2, being sure to use the internal tooth lock washers on each side of the clamp (FIG 1), and on Magnum Quick Clamps, place the spacer washer in between the clamp halves. FIG 1

#### STEP 4

Place the Offset arm on the clamp (making sure there is an internal tooth lock washer between the arm and the clamp) and secure with the 1/2" fastener. **DO NOT** fully tighten them at this point. Sit on the bike and determine the desired arm position, adjust as needed, then tighten the 1/2" fastener securely.

## FOR MOUNTING WITH 1/2" CLEARANCE HOLE

#### STEP 5

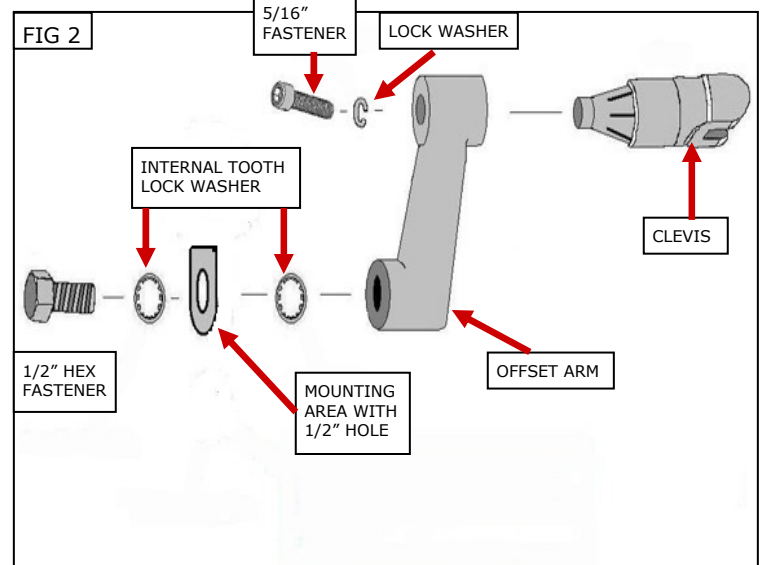
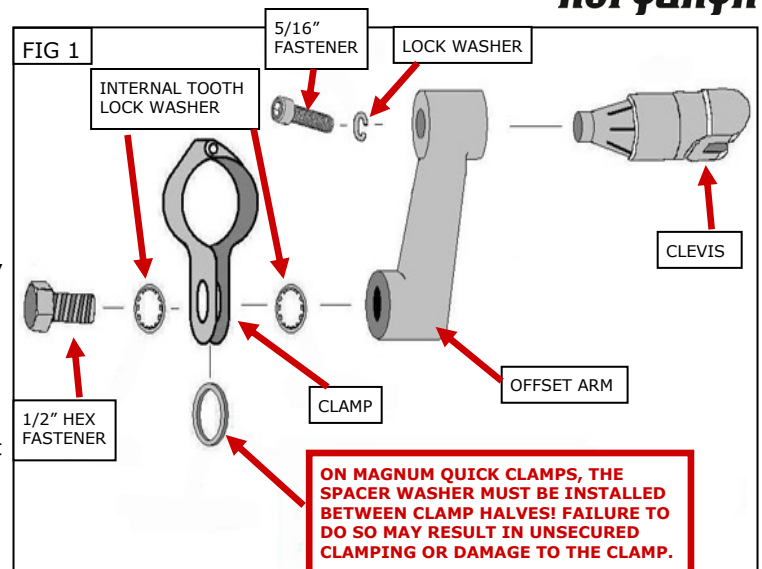
Insert the 1/2" fastener that was removed in STEP 2 through the clearance hole. Be sure to use the internal tooth lock washers on the fastener on each side of the clearance hole. FIG 2

#### STEP 6

Place the Offset arm on the 1/2" fastener (making sure there is an internal tooth lock washer between the arm and the mounting surface) and secure the 1/2" fastener. **DO NOT** fully tighten the fastener at this point. Sit on the bike and determine the desired arm position, adjust as needed, then tighten the 1/2" fastener securely.

#### STEP 7

The angle of the clevis may be adjusted by loosening the 5/16" fastener that secures the clevis to the arm. FIG 1 and FIG 2 Rotate the clevis and peg to the desired position. Tighten all fasteners securely.



**WARNING** FOOTPEGS MUST BE INSTALLED SO THEY WILL FOLD UPWARD AND REARWARD IF HIT BY ANY OBJECT. FAILURE TO ADJUST THE FOOTPEGS TO OPERATE IN THIS MANNER COULD RESULT IN SERIOUS INJURY OR DEATH.



**WARNING** CHECK TO MAKE SURE THAT THERE IS PROPER CLEARANCE WHEN CORNERING. LOSS OF CONTROL OF THE MOTORCYCLE AND SERIOUS INJURY MAY OCCUR IF THE PEG/ARM IS NOT POSITIONED PROPERLY. REPOSITION THE OFFSET ARM IF NECESSARY SO THAT THERE IS ADEQUATE CORNERING CLEARANCE.

### NOTICE

Check clearance for proper operation of controls. Highway Pegs provide additional positions to place your feet/new-riding positions. Confirm clearance and relation of the position of your feet to the shifter and the brake pedals.

### NOTICE

It is the installer's responsibility to ensure that all of the fasteners (including pre-assembled) are tightened before operation of the motorcycle. Kuryakyn will not provide warranty coverage on products or components lost due to improper installation or lack of maintenance. Periodic inspection and maintenance are required on all fasteners.

PAGE

2

*Ride On!*

**OFFSET MOUNTS**

**INSTALLATION**