



BREMBO BRAKE CALIPER COVERS

PART# 7789

PARTS INCLUDED

- 1 Right Caliper Cover
- 1 Left Caliper Cover
- 4 Bolt Covers
- 4 6-32 X 3/16" Set Screws
- 1 Installation Instructions

Please read and understand entire instructions before starting installation.

THANK YOU FOR CHOOSING KÜRYAKYN!

IN ORDER TO PROTECT YOU AND OTHERS FROM POSSIBLE INJURY AND/OR PROPERTY DAMAGE OR LOSS, PLEASE PAY CLOSE ATTENTION TO ALL INSTRUCTIONS, WARNINGS, CAUTIONS AND ATTENTION NOTES REGARDING THE USE AND CARE OF THIS PRODUCT.

ATTENTION! This indication alerts you to the fact that ignoring the contents described herein may negatively affect product performance and functionality.

TOOLS SUGGESTED

10 MM 12 Point Socket and Racket, Set of Hex Wrenches

STRICTLY OBSERVE THE FOLLOWING GUIDELINES IN ORDER TO USE THE PRODUCT PROPERLY AND AVOID POTENTIALLY DANGEROUS ACCIDENTS.

ATTENTION!

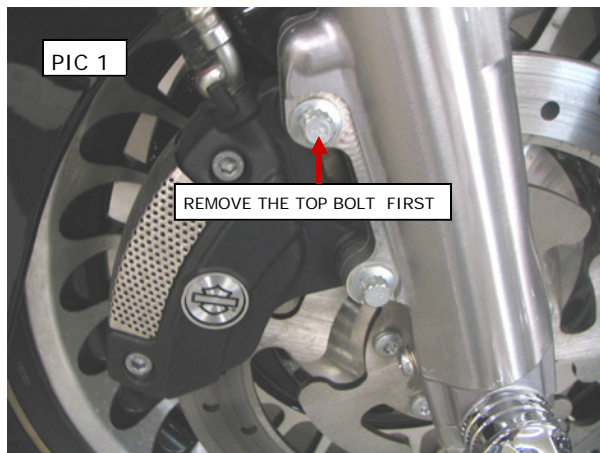
A factory service manual may be helpful in performing this installation. Do not attempt to perform this installation if you are not confident in your ability to complete all of the steps in the procedure; consult a trained technician.

STEP 1

Read and understand all steps in the instructions before starting the installation. Park the motorcycle on a hard, level surface and turn off the ignition. Let cool.

STEP 2

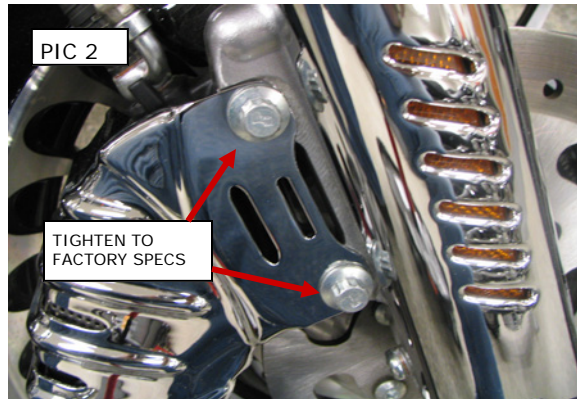
Remove the top 12 point bolt that attaches the caliper to the right side fork leg. PIC 1



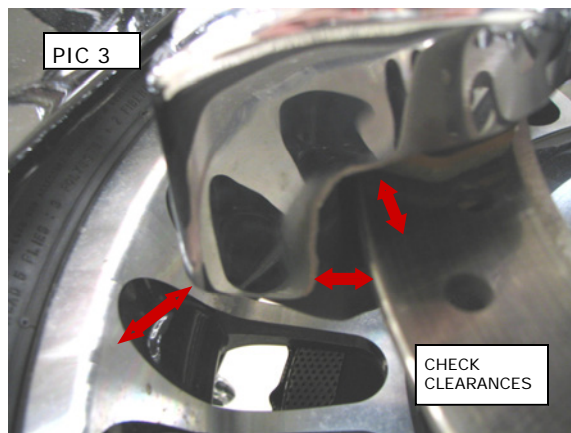
-cont.-

STEP 3

Place the bolt through the top hole in the Caliper cover and loosely attach it back through the fork leg to the caliper. Remove the bottom 12 point bolt, pivot the Caliper cover on the top bolt towards the fork leg and install the bottom bolt through the fork leg to the caliper. Tighten the bolts to the factory torque specs. PIC 2

**STEP 4**

Check the bottom of the caliper cover to make sure you have clearance from the brake rotor and tire valve stem. PIC 3

**STEP 5**

Place one bolt cover over each caliper bolt head and tighten the set screw to hold it in place. PIC 4

**STEP 6**

Repeat for left side.

ATTENTION!

It is the installer's responsibility to ensure that all of the fasteners (including pre-assembled) are tightened before operation of the motorcycle. Küryakyn will not issue a warranty on components lost due to improper installation. Periodic maintenance may be required.

Ride On!

PAGE

2

BREMBO BRAKE CALIPER COVERS

INSTALLATION