



FIVE TO FOUR WIRE CONVERTER WITH 4-PIN FLAT CONNECTOR

7675

PARTS INCLUDED

- 1 5-4 Wire Trailer Converter
- 1 Hardware Kit Containing
 - 6 8" Black Nylon Cable Ties
 - 5 Heat Shrink Covered Butt Connectors
 - 1 Dielectric Grease Package
 - 2 14" Nylon Cable Ties
- 1 4- Pin Flat Connector
- 1 Alcohol Pad
- 1 Installation Instructions

Please read and understand entire instructions before starting installation.

THANK YOU FOR CHOOSING KÜRYAKYN!

IN ORDER TO PROTECT YOU AND OTHERS FROM POSSIBLE INJURY AND/OR PROPERTY DAMAGE OR LOSS, PLEASE PAY CLOSE ATTENTION TO ALL INSTRUCTIONS, WARNINGS, CAUTIONS AND ATTENTION NOTES REGARDING THE USE AND CARE OF THIS PRODUCT.

ATTENTION! This indication alerts you to the fact that ignoring the contents described herein may negatively affect product performance and functionality.

CAUTION! This indication alerts you to the fact that ignoring the contents described herein can result in potential injury or material damage.

TOOLS SUGGESTED

Set of hex wrenches, combination wrenches, crimping pliers, electrical tape, test light or multi meter

STRICTLY OBSERVE THE FOLLOWING GUIDELINES IN ORDER TO USE THE PRODUCT PROPERLY AND AVOID POTENTIALLY DANGEROUS ACCIDENTS.

NOTE: This 5-4 wire trailer converter is for use when your trailer has a flat 4-wire connection

- STEP 1** Read and understand all steps in the instructions before starting the installation. Park the motorcycle on a hard, level surface and turn off the ignition.
- STEP 2** Unplug the Trailer Isolation Relay kit from the 4-pin plug from the sub-harness. PIC 1
- STEP 3** Plug the male end of the 5-4 Converter into the female 4-pin plug from the sub-harness and plug the female end of the 5-4 Converter onto male connector on the Trailer Isolation Relay. PIC 1

-cont.-

STEP 4 Remove a nearby chassis bolt, take the 1/4" ring terminal on the **WHITE** wire and place it behind the bolt. Reinstall the bolt. PIC 1

NOTE: You may have to use sand paper to remove the paint to ensure a good grounding connection.

ATTACHING THE 4-PIN FLAT CONNECTOR

NOTE: This harness has six wires. Three are required for trailer lights—

YELLOW is LEFT turn and BRAKE,

GREEN is RIGHT turn and BRAKE

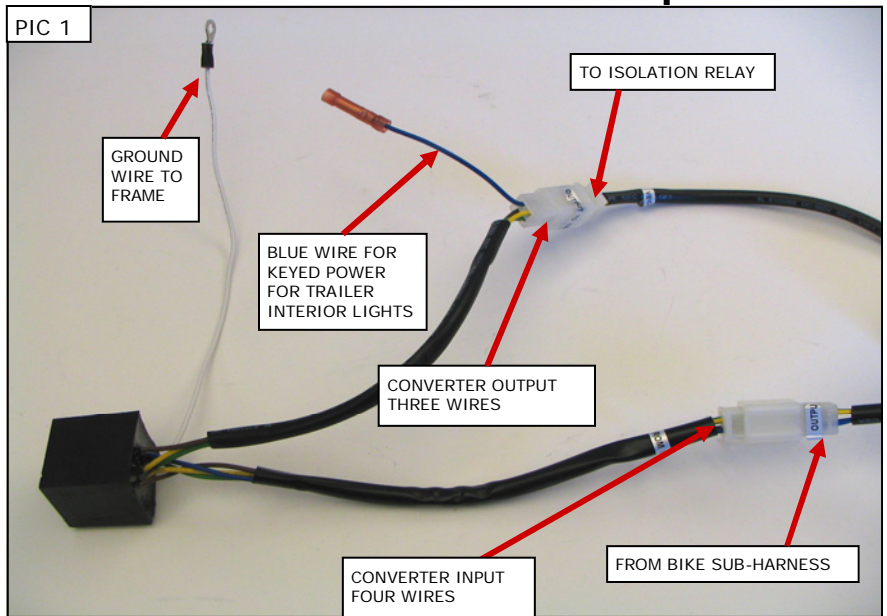
BROWN is the RUNNING lights.

The **WHITE** wire is required for GROUND.

The **BLUE** wire, with the butt connector installed, located in the female connector of the converter box is a "keyed" 12 volt accessory wire for trailer interior lighting (if your trailer is equipped). You will need to provide "keyed" 12 volt power to use this wire.

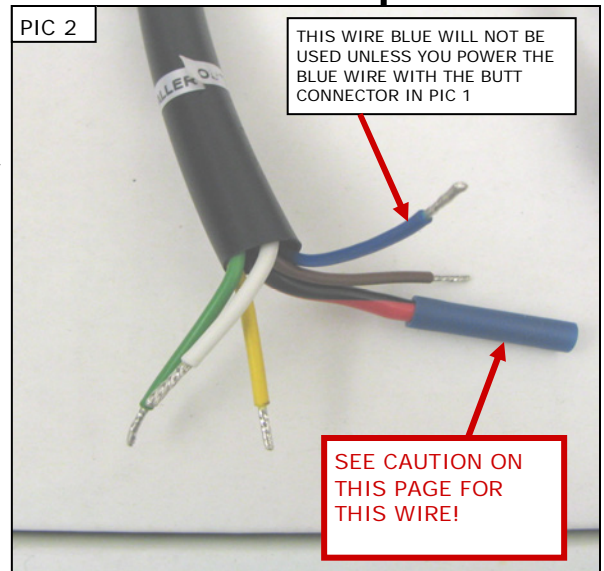
The **RED with BLACK STRIPE** is a constant (**always hot**) 12 volt accessory wire for keyless entry (if your trailer is equipped).

Steps 1 and 2 are for installation of the included 4-Pin Flat Connector. If your application uses the optional wires, you will need to supply your own connector.



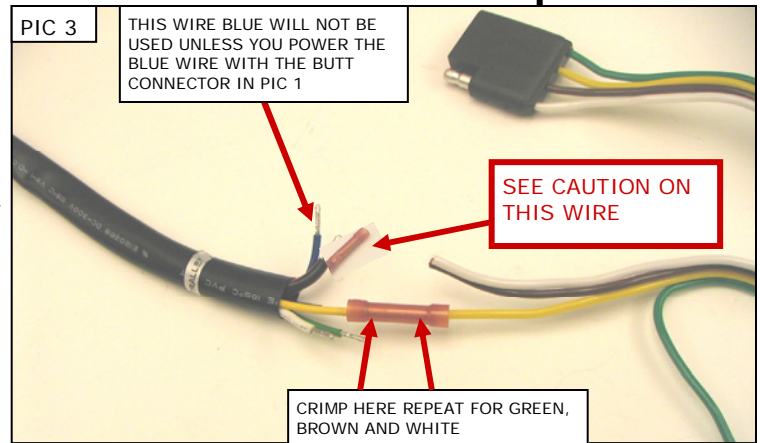
STEP 1 Locate the output wires from the Isolation relay. Using the supplied butt connectors, crimp one to the YELLOW, BROWN, GREEN and WHITE wires from the isolation relay. PIC 2 and PIC 3 The BLUE wire will not be used unless you provide "keyed" 12 volt power to the installed butt connector on the BLUE wire in PIC 1.

CAUTION! If the red with a black stripe wire is not going to be used, cap it off using electrical tape or a piece of heat shrink over the installed butt connector, as it will have power to it all the time, even when the key is off, as it is connected directly to the battery!



STEP 2 Trim the wires from the included 4-Pin Flat Connector to the desired length, strip a little insulation from the end of each wire, and attach them to the other end of the butt connectors on the same colored wires from Step 1. PIC 3

CAUTION! The extra Blue wire that has the bullet connector is for a keyed 12-volt power wire for any accessory light you may want on your trailer. This extra wire is not required for regular trailer use.



Ride On!