



UNIVERSAL TRAILER WIRING AND RELAY HARNESS

7671

PARTS INCLUDED

- 1 Trailer Wiring Isolation Harness with Relay
- 1 Inline Fuse "Y" Harness with Heat Shrink Covered Butt Connectors
- 1 Universal Trailer Sub Harness
- 1 Hardware Kit Containing:
 - 6 8" Black Nylon Wire Ties
 - 1 1/4" Ring Terminal
 - 1 Dielectric Grease Pack
 - 5 Male Spade Connectors
 - 5 Female T-Tap Connectors
- 1 Installation Instructions

Please read and understand entire instructions before starting installation.

THANK YOU FOR CHOOSING KÜRYAKYN!

IN ORDER TO PROTECT YOU AND OTHERS FROM POSSIBLE INJURY AND/OR PROPERTY DAMAGE OR LOSS, PLEASE PAY CLOSE ATTENTION TO ALL INSTRUCTIONS, WARNINGS, CAUTIONS AND ATTENTION NOTES REGARDING THE USE AND CARE OF THIS PRODUCT.

WARNING! THIS INDICATION ALERTS YOU TO THE FACT THAT IGNORING THE CONTENTS DESCRIBED HEREIN CAN RESULT IN POTENTIAL DEATH OR SERIOUS INJURY.

ATTENTION! This indication alerts you to the fact that ignoring the contents described herein may negatively affect product performance and functionality.

CAUTION! This indication alerts you to the fact that ignoring the contents described herein can result in potential injury or material damage.

TOOLS SUGGESTED

Set of Hex Wrenches, Combination Wrenches, Wire Stripper, Crimping Pliers, Side Cutters, Test Light or Multi Meter

STRICTLY OBSERVE THE FOLLOWING GUIDELINES IN ORDER TO USE THE PRODUCT PROPERLY AND AVOID POTENTIALLY DANGEROUS ACCIDENTS.

STEP 1 Read and understand all steps in the instructions before starting the installation. Park the motorcycle on a hard, level surface and turn off the ignition.

ATTENTION! A factory service manual may be helpful in performing this installation. Do not attempt to perform this installation if you are not confident in your ability to complete all of the steps in the procedure; consult a trained technician.

STEP 2 Locate wires for the taillights, and turn signals on the back of the bike. Usually underneath the seat or behind one of the side covers.

-cont.-

CAUTION! Always install the Isolation Relay Sub Harness upstream (before) of any existing multi-function control modules. Do not install the Isolation Relay Sub Harness between a module and the turn signals, as this will overload the module. Overloading will damage the module and may create a fire hazard!

STEP 3 With a test light, locate the run light, each turn signal light and brake light wires. It would be helpful to write each wire and purpose down on a piece of paper for later use.

CAUTION! Avoid potential electrical shock! Disconnect the battery before starting this procedure.

STEP 4 Disconnect the battery. Install one of the supplied female T-Taps on each of the four wires.

ATTENTION! Küryakyn recommends the use of the included dielectric grease on electrical connections

STEP 5 Find the location where you will like to secure the wires from the Universal-Sub Harness (this is the four wires attached to the four pin plug). If the wires are too long for your application, use a side cutter and cut them to the correct length. Once you have your desired length, install one of the provided male spade connectors to each wire.

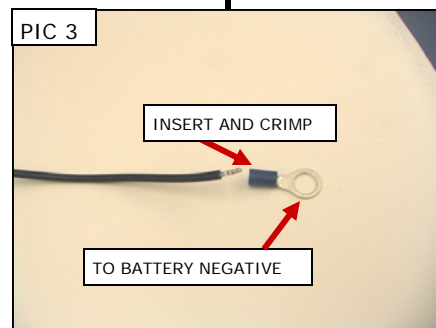
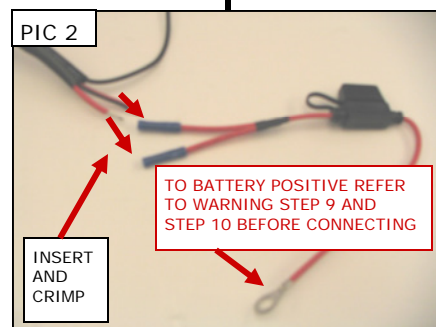
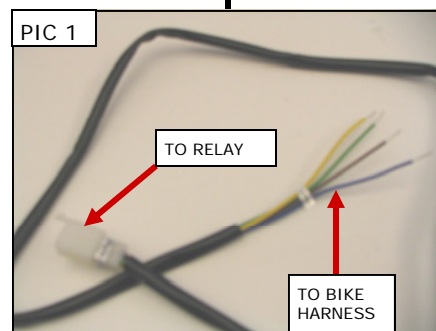
STEP 6 Install the Universal-Sub Harness PIC 1, by attaching a male spade connector on the correct color/function wire to the same function wire with the female T-Tap on the bike's harness. Yellow is the Left Turn, Brown is Tail Light, Green is Right Turn, Blue is Brake Light.

STEP 7 Take the long red positive, red with a black stripe and the long black ground wire in the black sheathing and route them to the battery. Be cautious of where you route the wires, avoid moving parts or extreme heat.

STEP 8 Take the red power wire and connect it to one end of the "Y" wire attached to the fuse holder with the butt connectors. PIC 2 Slide the wire into the end of the butt connector and crimp.

STEP 9 The red wire with a black stripe is a power wire that can be used for keyless entry power or interior lighting on the trailer. If your trailer **DOES NOT** need an extra power wire for accessory lighting, then **DO NOT** connect this to the other "Y" wire from the fuse holder. Wrap the butt connector on the unused red "Y" wire with electrical tape or heat shrink to prevent an unwanted short, as it will have power to it all the time, and secure it out of harms way. Proceed to Step 11.

WARNING: WHEN THE SINGLE RED WIRE WITH THE RING TERMINAL IS CONNECTED TO THE BATTERY IN STEP 11, THE RED WIRE WITH THE BUTT CONNECTOR WILL HAVE POWER AT THE BUTT CONNECTOR. **MAKE SURE IT IS CAPPED OFF AS IN STEP 9 BEFORE ATTACHING THIS WIRE TO THE BATTERY!**



STEP 10

If your trailer **DOES** need an extra power wire for accessory lighting, Take the red with black stripe power wire and connect it to the end of the second "Y" wire with the attached butt connector. PIC 2 Slide the wire into the end of the butt connector and crimp.

NOTE: If you would like to have "keyed" power to the red with black stripe wire, instead of constant power, use a test light to find a "keyed" wire on the bike and attach this wire to it. Be sure to cap off the unused butt connector on the "Y" wire from the fuse holder as in Step 9. Make sure that the added amperage from the trailer accessory will not overload the chosen circuit.

WARNING: WHEN THIS SINGLE RED WIRE WITH THE RING TERMINAL IS CONNECTED TO THE BATTERY IN STEP 11, THE RED WIRE WITH THE BLACK STRIPE WILL HAVE POWER AT THE OTHER END OF IT. **MAKE SURE IT IS CAPPED OFF AS THE RED WIRE IN STEP 9, OR ATTACHED TO THE TRAILER PLUG, BEFORE ATTACHING THIS WIRE TO THE BATTERY!**

STEP 11

Reconnect all wires that were attached to the positive side and the single red wire from the other end of the fuse holder with the ring terminal to the positive side of the battery. PIC 2 Reconnect all wires that were attached to the negative side and the long black ground wire (using the supplied 1/4" ring terminal that you will need to crimp to the black wire) PIC 3, to the negative on the battery.

STEP 12

On the bike, you can plug the 4 pin plugs to each other. PIC 4 With the two (four pin) plugs connected, use a test light to check for proper function. Turn the key on and test both signals. (Yellow is left turn and Green is right turn) Brake lights (Blue) and Run light (Brown). The red wire with a black stripe is a power wire that can be used for keyless entry power or interior lighting on the trailer (Step 9 or Step 10). The white wire is ground. PIC 5

ATTENTION! Secure all wiring away from any moving parts, pinch points or extreme heat. Kuryakyn WILL NOT issue a warranty on any electrical component that fails due to pinched, crimped, broken, abraded, melted or frayed wires.

STEP 13

Tie up any excess wire length with the provided cable ties. Locate an area on the bike that you will be able to mount the trailer isolation relay box. Take the provided 1" x 2" Hook Strap and the 1" x 2" Loop Strap and place one on the back of the trailer isolation relay and the other on the bike in a good and safe area that is out of harms way.

STEP 14

Wire up any style connector needed for your trailer application.

STEP 15

When you are satisfied with the wiring, re-install the saddlebag if needed, replace the seat, and secure it in the same order that it was removed in Step 2 of the installation instructions.

WARNING! ENSURE PROPER TRAILER AND MOTORCYCLE LIGHT OPERATION BEFORE RIDING THE MOTORCYCLE. VISIBILITY IS A MAJOR CONCERN FOR MOTORCYCLISTS. TRAILER OR MOTORCYCLE LIGHT MALFUNCTION COULD RESULT IN DEATH OR SERIOUS INJURY.

