



LONGHORN OFFSET HIGHWAY PEGS 7599

PARTS INCLUDED

- 1 Left Longhorn Offset /1-1/4" Magnum Quick Clamp/Trident Dually Peg—Black
- 1 Right Longhorn Offset /1-1/4" Magnum Clamp/Trident Dually Peg—Black
- 1 Anti-Seize Packet
- 1 Installation Instructions

Please read and understand entire instructions before starting installation.

THANK YOU FOR CHOOSING KÜRYAKYN!

IN ORDER TO PROTECT YOU AND OTHERS FROM POSSIBLE INJURY AND/OR PROPERTY DAMAGE OR LOSS, PLEASE PAY CLOSE ATTENTION TO ALL INSTRUCTIONS, WARNINGS, CAUTIONS AND NOTICES REGARDING THE USE AND CARE OF THIS PRODUCT.

WARNING	THIS INDICATION ALERTS YOU TO THE FACT THAT IGNORING THE CONTENTS DESCRIBED HEREIN CAN RESULT IN POTENTIAL DEATH OR SERIOUS INJURY.
NOTICE	This indication alerts you to the fact that ignoring the contents described herein may negatively affect product performance and functionality.

NOTICE **IF INSTALLING THIS PRODUCT FOR ANOTHER PARTY, PLEASE MAKE SURE THEY RECEIVE THIS COPY OF THE INSTALLATION INSTRUCTIONS SO THEY ARE AWARE OF**

TOOLS SUGGESTED

Set of Hex Wrenches, Set of Combination Wrenches, or Socket Set and Ratchet

STRICTLY OBSERVE THE FOLLOWING GUIDELINES IN ORDER TO USE THE PRODUCT PROPERLY AND AVOID POTENTIALLY DANGEROUS ACCIDENTS.

STEP 1 Read and understand all steps in the instructions before starting the installation. Park the motorcycle on a hard, level surface and turn off the ignition. Let cool.

NOTE: Pictures shown of Chrome parts. Installation of Black parts will be the same.

WARNING **YOU WILL BE WORKING AROUND THE ENGINE AND EXHAUST SYSTEM DURING INSTALLATION. ENSURE THAT THE ENGINE AND EXHAUST SYSTEM HAVE FULLY COOLED TO PREVENT INJURY.**

NOTE: The normal orientation of the pegs is with wider portion of the pegs towards the front of the bike.

STEP 2 Referring to FIG.1, remove the 1/2" bolt, spacer, internal tooth lock washer and lock plate from the Longhorn Arm. Set these items aside for now, they will be used to install the Longhorn Arm.

NOTICE **Determine the mounting location and orientations of the Magnum Quick lamp before fully tightening the fasteners. The clamp may leave marks when tightened down.**

NOTICE

Use the supplied anti-seize for any fasteners; this will prevent galling and make future removal of fasteners easier.

STEP 3 Place the Magnum Quick Clamp around the engine guard tube (making sure that the head of the hinge pin is facing up) that you choose as your mounting point. Close the clamp; insert the bolt that was removed in STEP 2, being sure to use the internal tooth lock washer, and place the spacer washer in between the clamp halves. FIG 1

NOTE: Spacer washer must be installed between clamp halves! Failure to do so may result in unsecured clamping or damage to the clamp.

STEP 4 Place the lock plate on the other side of the clamp so that the smooth side is facing the clamp and the splines are facing outwards toward the arm.

STEP 5 Place the Longhorn arm on the clamp and secure with the 1/2" fastener. **DO NOT** fully tighten them at this point. Sit on the bike and determine the desired arm orientation, adjust as needed and tighten the 1/2" fastener securely.

WARNING FOOTPEGS MUST BE INSTALLED SO THEY WILL FOLD UPWARD AND REARWARD IF HIT BY ANY OBJECT. FAILURE TO ADJUST THE FOOTPEGS TO OPERATE IN THIS MANNER COULD RESULT IN SERIOUS INJURY OR DEATH.

STEP 6 The angle of the peg may be adjusted by loosening the 5/16" fastener that secures the clevis to the arm (PIC 1 and FIG 1) or by loosening the 5/16" fastener in the end of the peg. PIC 1 Rotate the clevis and/or peg to the desired position. Tighten the fastener(s) securely.

NOTE: The male adapter in the Trident peg has a setscrew (PIC 2) that may be used to "fine tune" the peg angle. Threading the setscrew in, will tip the end of the peg towards you.

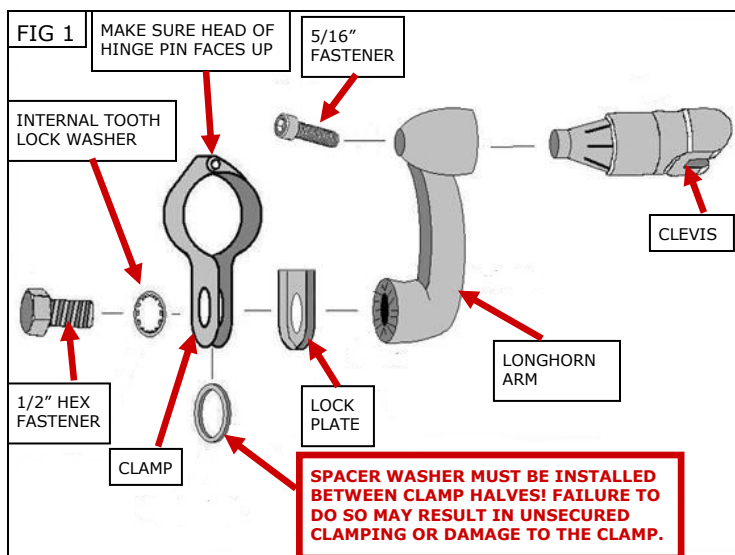
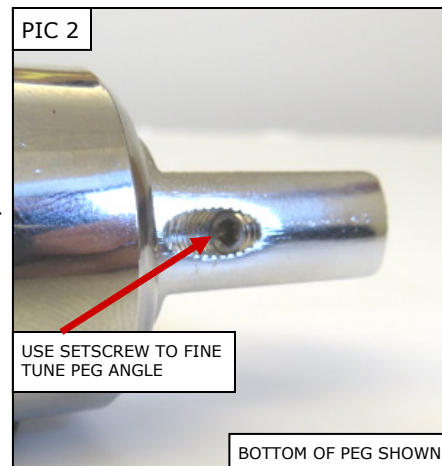
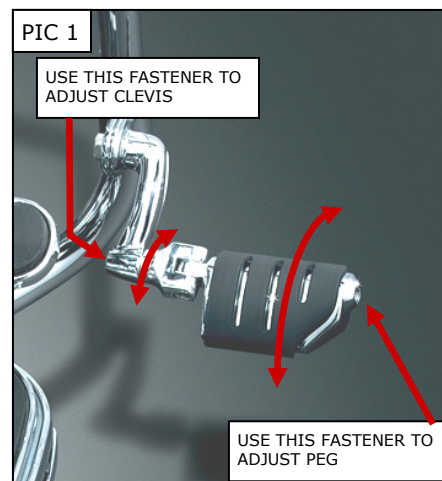
STEP 7 Repeat STEP 2 through 6 for the opposite side.

WARNING CHECK TO MAKE SURE THAT THERE IS PROPER CLEARANCE WHEN CORNERING. LOSS OF CONTROL OF THE MOTORCYCLE AND SERIOUS INJURY MAY OCCUR IF THE PEG/ARM IS NOT POSITIONED PROPERLY. REPOSITION THE LONGHORN ARM IF NECESSARY SO THAT THERE IS ADEQUATE CORNERING CLEARANCE.

STEP 8 Tighten all fasteners.

NOTICE Check clearance for proper operation of controls. Highway Pegs provide additional positions to place your feet/new-riding positions. Confirm clearance and relation of the position of your feet to the shifter and the brake pedals.

NOTICE It is the installer's responsibility to ensure that all of the fasteners (including pre-assembled) are tightened before operation of the motorcycle. Kuryakyn will not provide warranty coverage on products or components lost due to improper installation or lack of maintenance. Periodic inspection and maintenance are required on all fasteners.



Ride On!

LONGHORN OFFSET MOUNTS **INSTALLATION**