



PREMIUM PASSENGER BOARD INSERTS 7554

PARTS INCLUDED

- 2 Kinetic Passenger Board Inserts—Chrome
- 1 Installation Instructions

Please read and understand entire instructions before starting installation.

THANK YOU FOR CHOOSING KÜRYAKYN!

IN ORDER TO PROTECT YOU AND OTHERS FROM POSSIBLE INJURY AND/OR PROPERTY DAMAGE OR LOSS, PLEASE PAY CLOSE ATTENTION TO ALL INSTRUCTIONS, WARNINGS, CAUTIONS AND NOTICES REGARDING THE USE AND CARE OF THIS PRODUCT.

WARNING

THIS INDICATION ALERTS YOU TO THE FACT THAT IGNORING THE CONTENTS DESCRIBED HEREIN CAN RESULT IN POTENTIAL DEATH OR SERIOUS INJURY.

NOTICE

This indication alerts you to the fact that ignoring the contents described herein may negatively affect product performance and functionality.

NOTICE

IF INSTALLING THIS PRODUCT FOR ANOTHER PARTY, PLEASE MAKE SURE THEY RECEIVE THIS COPY OF THE INSTALLATION INSTRUCTIONS SO THEY ARE AWARE OF THE IMPORTANT INFORMATION CONTAINED IN THEM.

TOOLS SUGGESTED

Small Round Metal File, Emery Cloth, Scissors, Dish Soap

STRICTLY OBSERVE THE FOLLOWING GUIDELINES IN ORDER TO USE THE PRODUCT PROPERLY AND AVOID POTENTIALLY DANGEROUS ACCIDENTS.

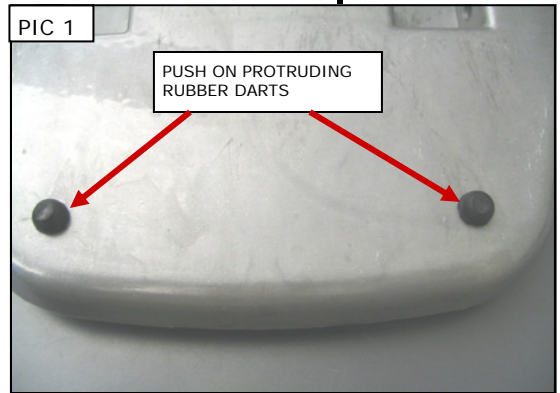
STEP 1

Read and understand all steps in the instructions before starting the installation. Park the motorcycle on a hard, level surface and turn off the ignition. Let cool.

WARNING

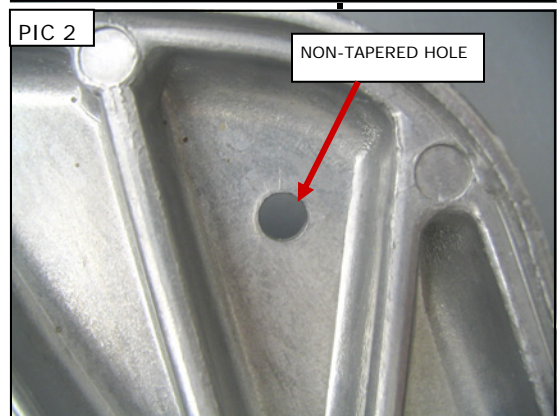
YOU WILL BE WORKING AROUND THE ENGINE AND EXHAUST SYSTEM DURING INSTALLATION. ENSURE THAT THE ENGINE AND EXHAUST SYSTEM HAVE FULLY COOLED TO PREVENT INJURY.

STEP 2 Starting with the right side, remove the floorboard pad by gently pulling up on the rubber pad while simultaneously pushing on the rubber darts protruding from the bottom of the footboard assembly as shown in PIC 1.



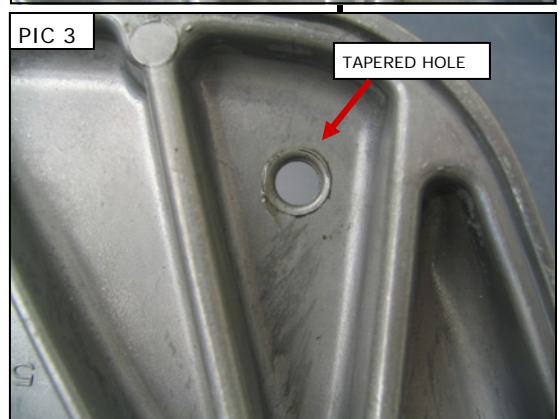
NOTE: Some floorboards may not have tapered holes for the rubber darts as shown in PIC 2 and PIC 3. On these floorboards drill the holes out with a 9/32" drill bit; then use the round file and/or the emery cloth to round the edges of the holes.

STEP 3 Make sure the pivot pins are in place PIC 4; starting on that side of the floorboard, install the new insert and then press the darts through the holes.

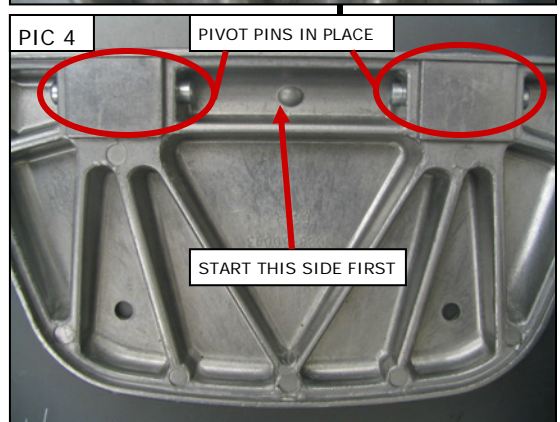
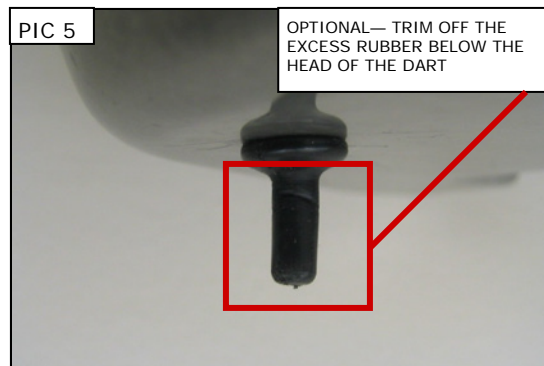


NOTE: It may be helpful to apply a small amount of dish soap on the darts to ease the installation.

STEP 4 Repeat STEP 3 and STEP 4 for the left side.



STEP 5 You may choose to cut off the excess rubber below the head of the darts as shown in PIC. 5; however, this may make reinstalling the insert more difficult in the future.



Ride On!