



RELOCATOR BRACKETS 7528

PARTS INCLUDED

- 1 Left Rear Bracket
- 1 Left Front Bracket
- 1 Right Rear Bracket
- 1 Right Front Bracket
- 1 Hardware Kit Containing:
 - 4 1/4"-20 X 1-1/4" Shoulder Bolts
 - 4 1/4"-20 Nylon Nuts
 - 4 #10-32 Set Screws
 - 8 1/4" Flat Washers
- 1 Installation Instructions

Please read and understand entire instructions before starting installation.

THANK YOU FOR CHOOSING KÜRYAKYN!

IN ORDER TO PROTECT YOU AND OTHERS FROM POSSIBLE INJURY AND/OR PROPERTY DAMAGE OR LOSS, PLEASE PAY CLOSE ATTENTION TO ALL INSTRUCTIONS, WARNINGS, CAUTIONS AND NOTICES REGARDING THE USE AND CARE OF THIS PRODUCT.

WARNING	THIS INDICATION ALERTS YOU TO THE FACT THAT IGNORING THE CONTENTS DESCRIBED HEREIN CAN RESULT IN POTENTIAL DEATH OR SERIOUS INJURY.
NOTICE	This indication alerts you to the fact that ignoring the contents described herein may negatively affect product performance and functionality.

NOTICE	IF INSTALLING THIS PRODUCT FOR ANOTHER PARTY, PLEASE MAKE SURE THEY RECEIVE THIS COPY OF THE INSTALLATION INSTRUCTIONS SO THEY ARE AWARE OF THE IMPORTANT INFORMATION CONTAINED IN THEM.
---------------	---

TOOLS SUGGESTED

Set of Hex Wrenches, Combination Wrenches or Socket Set and Ratchet

STRICTLY OBSERVE THE FOLLOWING GUIDELINES IN ORDER TO USE THE PRODUCT PROPERLY AND AVOID POTENTIALLY DANGEROUS ACCIDENTS.

STEP 1 Read and understand all steps in the instructions before starting the installation. Park the motorcycle on a hard, level surface and turn off the ignition. Let cool.

WARNING	YOU WILL BE WORKING AROUND THE ENGINE AND EXHAUST SYSTEM DURING INSTALLATION. ENSURE THAT THE ENGINE AND EXHAUST SYSTEM HAVE FULLY COOLED TO PREVENT INJURY.
----------------	---

STEP 2 Remove the right side (sitting on the bike) driver floorboard from the mounting brackets. Keep the hardware; it will be used later.

-cont.-

STEP 3 Determine the left and right (sitting on the bike) side Relocation Brackets. PIC 1

STEP 4 After determining the right and left Relocation Brackets, determine the front and rear. The fronts have a narrower tab and the rears have a wider tab. PIC 1

STEP 5 Insert the #10-32 set screws in to each Relocation Bracket. PIC 2

STEP 6 Using the hardware removed in Step 2, attach the right side Relocation Brackets to the right side stock board mounts. PIC 3

STEP 7 Install the floorboards on the new Relocation Brackets using the new hardware included in the kit. Spare washers are included if necessary. PIC 4

NOTE: The mounting tabs on the floorboards may have bent if the stock hardware was over tightened. Make sure that the floorboard will fit over the new Relocation Brackets.

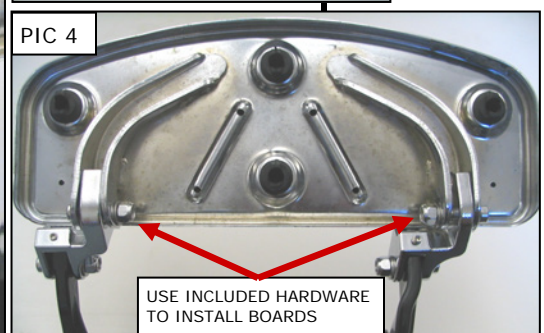
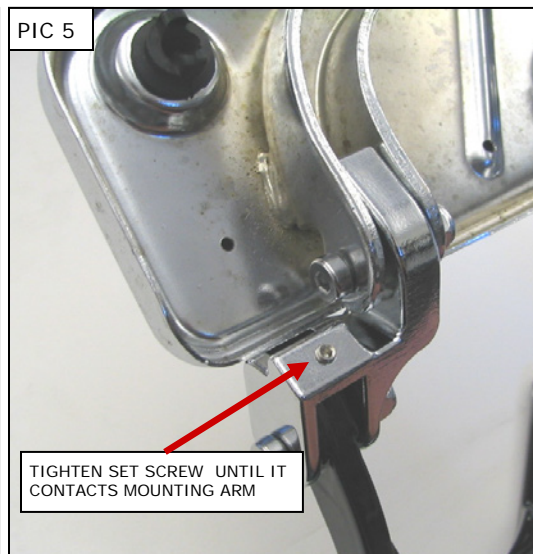
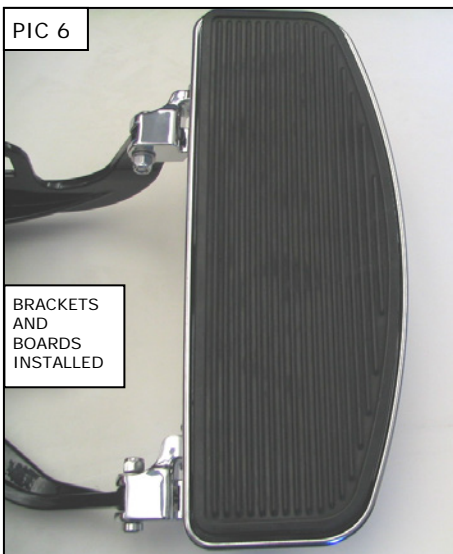
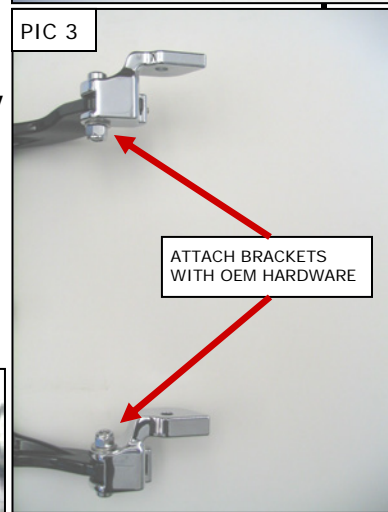
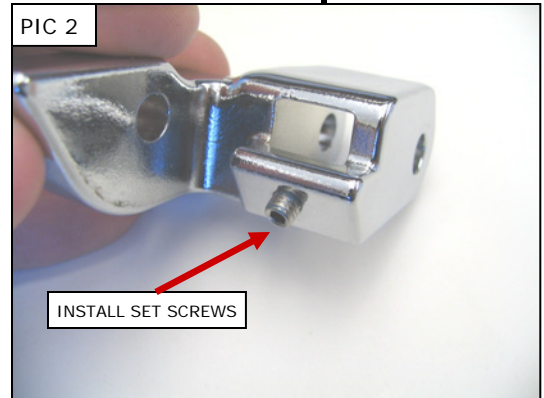
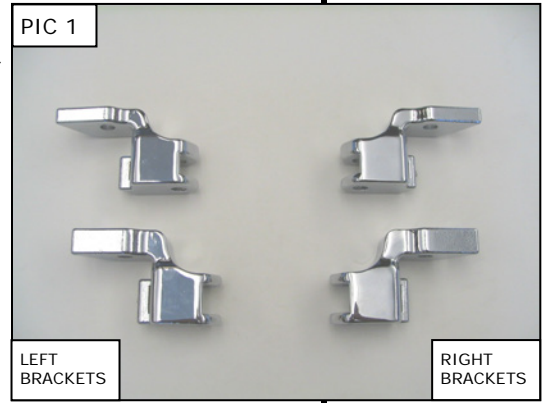
STEP 8 Tighten the set screws in each Relocation Bracket until the screws come in contact with the stock board mounts. This will keep the Relocation Brackets from moving. PIC 5

STEP 9 Repeat Step 2 through Step 8 for the left side.

WARNING CHECK TO MAKE SURE THAT THERE IS PROPER CLEARANCE WHEN CORNERING. LOSS OF CONTROL OF THE MOTORCYCLE AND SERIOUS INJURY MAY OCCUR WITHOUT PROPER CORNERING CLEARANCE.

NOTICE Check clearance for proper operation of controls. The Relocator Brackets provide more room to place your feet/new riding positions. Confirm clearance and relation of the position of your feet to the shifter and the brake pedals.

NOTICE It is the installer's responsibility to ensure that all of the fasteners (including pre-assembled) are tightened before operation of the motorcycle. Küryakyn will not provide warranty coverage on products or components lost due to improper installation or lack of maintenance. Periodic inspection and maintenance are required on all fasteners.



Ride On!