

INSTALLATION INSTRUCTIONS

QUICK RELEASE ATTACHMENT POINT KIT FOR TOURING, CHROME

7098

THANK YOU FOR CHOOSING KURYAKYN!

Protect yourself and others from possible injury and property damage or loss. Pay close attention to all instructions, warnings, cautions, and notices regarding the installation, use, and care of this product.

WARNING THIS INDICATION ALERTS YOU TO THE FACT THAT IGNORING THE CONTENTS DESCRIBED HEREIN CAN RESULT IN POTENTIAL DEATH OR SERIOUS INJURY.

CAUTION THIS INDICATION ALERTS YOU TO THE FACT THAT IGNORING THE CONTENTS DESCRIBED HEREIN CAN RESULT IN MINOR OR MODERATE POTENTIAL INJURY.

NOTICE THIS INDICATION ALERTS YOU TO THE FACT THAT IGNORING THE CONTENTS DESCRIBED HEREIN MAY NEGATIVELY AFFECT PRODUCT PERFORMANCE AND FUNCTIONALITY OR DAMAGE THE PRODUCT ITSELF OR THE PRODUCT TO WHICH IT IS BEING ATTACHED.

ENSURE THAT THE FOLLOWING PARTS HAVE BEEN INCLUDED IN THE KIT:

- | | | | |
|---|---------------|---|---|
| 1 | Left Bracket | 1 | Hardware Kit, containing: |
| 1 | Right Bracket | 4 | 3/8-16 x 1.25" Button Socket Head Cap Screw |
| | | 2 | Front Wear Sleeves |
| | | 4 | Rear Wear Sleeves (black nylon) |
| | | 4 | Inner Sleeves (steel) |
| | | 8 | Flat Washers |

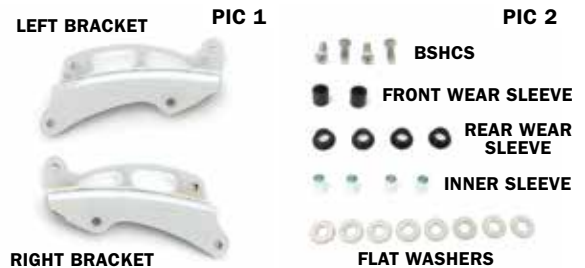
YOU WILL ALSO NEED:

Set of Hex Wrenches, Set of Torx Wrenches, Torque Wrench (FT/LBS) and Set of Hex Bit Sockets, Blue Loctite

NOTICE

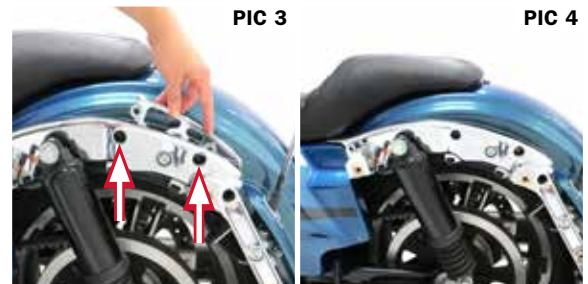
THESE INSTALLATION INSTRUCTIONS CONTAIN IMPORTANT INFORMATION. ENSURE THE END USER RECEIVES THIS COPY AND IS AWARE OF ITS IMPORTANCE FOR FUTURE USE.

STEP 1 Read and understand all steps in the instructions before starting the installation. Park the motorcycle on a hard, level surface and turn off the ignition. Let motorcycle cool.



STEP 2 Remove the saddlebags to expose the rear fender struts.

STEP 3 Refer to PIC 3 and 4. Remove existing hardware and fender strut inserts. Set the hardware aside, it will be reused.



INSTALLATION INSTRUCTIONS

QUICK RELEASE ATTACHMENT POINT KIT FOR TOURING, CHROME

7098

-CONTINUED-

STEP 4 Starting on the left (clutch) side. Locate the Left Bracket.

Note: The bumped up notch is the rear end of the bracket, and the bracket should bend in towards the bike.

STEP 5 Refer to PIC 5 and 6. Align and place the bracket into the rear fender support. Locate hardware that was removed in Step 3. Apply a small amount of Blue Loctite to each screw. Fasten the bracket to the rear fender support. Fully tighten hardware.

TORQUE VALUE FOR REAR FENDER SUPPORT SCREW:
12-18 FT-LBS (16.3-24.4 NM)

STEP 6 Refer to PIC 7. Locate provided two (2) Button Socket Head Cap Screws, four (4) Flat Washers, two (2) Inner Sleeves, two (2) Rear Sleeves, and one (1) front sleeve.

STEP 7 Refer to PIC 8. Place the following parts onto one of the screws in the following order to assemble the front attachment point: flat washer, front sleeve, inner sleeve (slides into the front sleeve), and a flat washer.

STEP 8 Refer to PIC 9. Place the following parts onto the other screw in the following order to assemble the back attachment point: flat washer, rear sleeve with the flat edge against the flat washer, inner sleeve (slides into the rear sleeve), rear sleeve with the flat edge facing out, and a flat washer.

STEP 9 Refer to PIC 9. Fasten the front connecting point assembly to the front mounting hole of the Right Bracket, and the rear connecting point assembly to the rear mounting hole of the bracket. Fully tighten hardware.

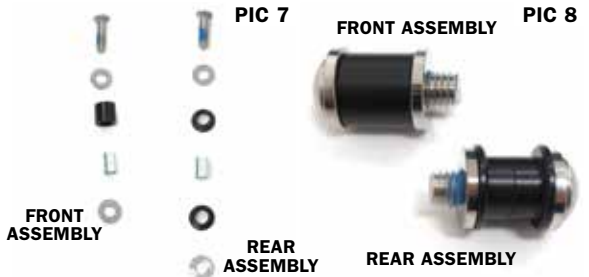
TORQUE VALUE FOR CONNECTING POINT ASSEMBLIES:
15 FT-LBS (20.34NM)

STEP 10 Repeat steps 4 through 9 on the right (brake) side.

STEP 11 Reinstall the saddlebags.

STEP 12 Refer to PIC 10. Locate Quick Release Mount for Multi-Purpose Backrest (P/N 7093 - sold separately). Install the mounts per the installation instructions provided with them.

STEP 13 Locate Multi-Purpose Backrest (P/N 1660 or 1661 - sold separately). Test fit the backrest between the fixed mounts. The Backrest should slide easily between the fixed mounts.



INSTALLATION INSTRUCTIONS

QUICK RELEASE ATTACHMENT POINT KIT FOR TOURING, CHROME

7098

-CONTINUED-

STEP 14 Refer to PIC 11 through 13. Install the backrest to the Fixed Mounts by inserting one of the supplied (with the backrest) 5/16"-18 X 7/8" countersunk socket head cap screws through one of the supplied shoulder washers, through the Fixed Mount and threading it to the Driver/Passenger Backrest on each side. Fully tighten hardware. If these fasteners are loosened or removed, see **WARNING!** below.

TORQUE VALUE FOR BACKREST SCREWS:
15 FT-LBS (20.34 NM)

WARNING

BOTH PIVOT/HINGE SCREWS MUST HAVE THREADLOCK COMPOUND RE-APPLIED AND RE-TORQUED ONCE REMOVED, AFTER INITIAL INSTALLATION. FAILURE TO DO SO MAY RESULT IN UNINTENDED LOOSENING AND MAY CAUSE SERIOUS INJURY OR DEATH. THE FEMALE THREADS IN THE MULTI-PURPOSE BACKREST AND THE THREADS ON THE REMOVED SCREWS WILL NEED TO BE CLEANED TO REMOVE ANY THREADLOCK RESIDUE BEFORE RE-INSERTING. RE-APPLY LOCTITE® THREADLOCK BLUE 242® OR EQUIVALENT, AS SHOWN IN PIC13, RE-TORQUING TO 15 FT-LBS (20.3 NM) USING A TORQUE WRENCH AND 3/16" ALLEN/HEX KEY ATTACHMENT. LET CURE PER THE THREADLOCK MANUFACTURERS INSTRUCTIONS AFTER INSTALLATION. IF YOU DO NOT WISH TO APPLY THREADLOCK, THEN ORDER A NEW SERVICE KIT, (P/N 991660) WHICH WILL CONTAIN SCREWS WITH BLUE THREADLOCK ADHESIVE PRE-APPLIED.

STEP 15 Refer to PIC 15 and 16. Check the operation of the Backrest by folding the locking levers to the straight out position. Lower or raise the backrest to the desired location. Fold the locking levers over to lock them in place. Gently rock the Backrest back and forth to ensure the locking pins are engaged in the notches in the Fixed Mounts. Repeat for the other position of the Backrest. Visually inspect the Shoulder Washers and Countersunk Socket Head Cap Screws at the pivot point for any signs of loosening before each ride. Kuryakyn requires checking all backrest attaching fasteners to the torque specifications defined in these instructions every 3,000 to 5,000 miles.

Note: See instructions for Multi-Purpose Driver/Passenger Backrest, P/N 1660 or P/N 1661, for adjustment procedures.

WARNING

THIS BACKREST IS NOT DESIGNED AS A SAFETY RESTRAINING DEVICE. FAILURE TO HOLD ONTO THE MOTORCYCLE MAY RESULT IN SERIOUS INJURY OR DEATH.

CAUTION

ENSURE THAT THE INSTALLATION OF THIS PRODUCT DOES NOT INTERFERE WITH THE PROPER OPERATION OF THE MOTORCYCLE BEFORE RIDING.

NOTICE

IT IS THE INSTALLER'S RESPONSIBILITY TO ENSURE THAT ALL OF THE FASTENERS (INCLUDING PRE-ASSEMBLED) ARE TIGHTENED BEFORE OPERATION OF THE MOTORCYCLE. KURYAKYN WILL NOT PROVIDE WARRANTY COVERAGE ON PRODUCTS OR COMPONENTS LOST DUE TO IMPROPER INSTALLATION OR LACK OF MAINTENANCE. PERIODIC INSPECTION AND MAINTENANCE ARE REQUIRED ON ALL FASTENERS.



PIC 13



APPLY THREAD LOCK TO SCREW

PIC 14



PIC 15

PIC 16

LOCKING LEVERS

LOCKED

UNLOCKED

FINAL

