

INSTALLATION INSTRUCTIONS

TRAILER HITCH FOR GL1800

6771

THANK YOU FOR CHOOSING KURYAKYN!

Protect yourself and others from possible injury and property damage or loss. Pay close attention to all instructions, warnings, cautions, and notices regarding the installation, use, and care of this product.

WARNING THIS INDICATION ALERTS YOU TO THE FACT THAT IGNORING THE CONTENTS DESCRIBED HEREIN CAN RESULT IN POTENTIAL DEATH OR SERIOUS INJURY.

CAUTION THIS INDICATION ALERTS YOU TO THE FACT THAT IGNORING THE CONTENTS DESCRIBED HEREIN CAN RESULT IN MINOR OR MODERATE POTENTIAL INJURY.

NOTICE THIS INDICATION ALERTS YOU TO THE FACT THAT IGNORING THE CONTENTS DESCRIBED HEREIN MAY NEGATIVELY AFFECT PRODUCT PERFORMANCE AND FUNCTIONALITY OR DAMAGE THE PRODUCT ITSELF OR THE PRODUCT TO WHICH IT IS BEING ATTACHED.

ENSURE THAT THE FOLLOWING PARTS HAVE BEEN INCLUDED IN THE KIT:

1	Left Side Rear Brace	CONTINUED	Hardware Kit, containing:
1	Right Side Rear Brace		1 3/4" Split Lock Washer
1	Left Side Front Brace		1 3/4-16 Nut
1	Right Side Front Brace		1 1-7/8" Ball Hitch
1	Hitch Receiver		1 Hitch Pin
1	Hitch Mount		1 3" Hair Pin Clip
1	Hardware Kit, containing:		4 18 Gold Wing Hitch Rubber Spacer
1	1 M6 x 1.0 x 12mm Flange Hex Head Bolt		4 18 Gold Wing Hitch Washer
2	2 M12 x 1.75 x 30mm Flanged Hex Bolt		2 M6 x 1.0 x 18mm Hex Head Cap Screw
2	2 M12 x 1.75 Flanged Nylon Hex Nut		2 M6 Nylon Insert Locknut

YOU WILL ALSO NEED:

Metric hex bit and socket set, ratchet extension set, combination wrench set, ft-lbs (Nm) torque wrench, blue loctite

NOTICE THESE INSTALLATION INSTRUCTIONS CONTAIN IMPORTANT INFORMATION. ENSURE THE END USER RECEIVES THIS COPY AND IS AWARE OF ITS IMPORTANCE FOR FUTURE USE.

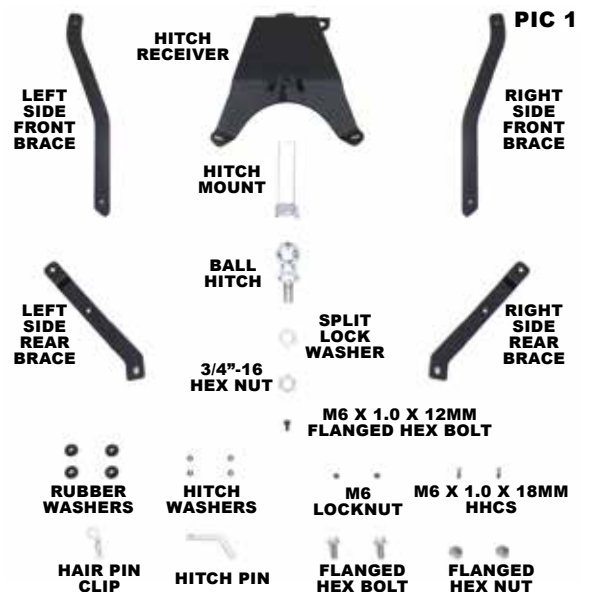
WARNING NO MOTORCYCLE MANUFACTURER HAS APPROVED OR ENDORSED KURYAKYN TRAILER HITCHES. USE OF A TRAILER OR TRAILER HITCH ON ANY MOTORCYCLE MAY VOID YOUR WARRANTY AND MAY INCREASE YOUR CHANCES OF INJURY OR ACCIDENT SITUATION.

WARNING YOU WILL BE WORKING AROUND THE ENGINE AND EXHAUST SYSTEM DURING INSTALLATION. ENSURE THAT THE ENGINE AND EXHAUST SYSTEM HAVE FULLY COOLED TO PREVENT INJURY.

WARNING TOWING A TRAILER BEHIND A MOTORCYCLE INCREASES THE LIKELIHOOD OF INJURY OR DEATH TO BOTH OPERATOR AND PASSENGER.

WARNING IF THE TRAILER FAILS TO HANDLE IN A SAFE AND PREDICTABLE MANNER, STOP THE MOTORCYCLE AND DO NOT OPERATE WITH THE TRAILER UNTIL YOU HAVE DETERMINED AND CORRECTED THE PROBLEM.

WARNING INSPECT ALL FASTENERS AND COMPONENTS BEFORE EVERY USE.



INSTALLATION INSTRUCTIONS

TRAILER HITCH FOR GL1800

6771

-CONTINUED-

NOTICE

KURYAKYN IS NOT AWARE OF ANY CURRENT STATE OR FEDERAL GUIDELINES FOR PULLING A TRAILER WITH A MOTORCYCLE. WE SUGGEST WHEN PULLING AND LOADING A TRAILER, DO NOT EXCEED THE MOTORCYCLE MANUFACTURER'S GROSS VEHICLE WEIGHT LIMITS.

STEP 1 Read and understand all steps in the instructions before starting the installation. Park the motorcycle on a hard, level surface and turn off the ignition. Let motorcycle cool.

FOR EASE OF INSTALLATION YOU MAY WANT TO REMOVE THE MUFFLERS. REFER TO YOUR MOTORCYCLE'S SERVICE MANUAL FOR ASSISTANCE ON REMOVAL OF MUFFLERS.

STEP 2 Refer to PIC 2 and 3. Unfasten Rear Fender A from the rear of the motorcycle and disconnect the license plate light. Remove Rear Fender A from the motorcycle. Set the assembly and mounting hardware aside, they will be reused.

STEP 3 Refer to PIC 2 and 4. Remove Cross Pipe C. Remove the rubber grommet from the middle of the Cross Pipe C. Set the rubber grommet and mounting hardware aside, they will be reused.

STEP 4 Refer to PIC 5. Starting on the left (clutch) side, remove two (2) socket bolts and grommet from the inside of the saddlebag on the bottom. Set the socket bolts aside, they will be reused.

STEP 5 Locate provided Left Side Rear and Front Brace, and one (1) M6 x 1.0 x 18mm Hex Head Cap Screw and one (1) M6 Locknut.

STEP 6 Refer to PIC 6 and 7. Align the rear mounting hole of the front brace under the middle mounting hole on the rear brace. Insert the Screw through the top of the aligned mounting holes and secure it in place with the Locknut. Do not fully tighten hardware.

STEP 7 Refer to PIC 8 and 9. Locate provided two (2) Hitch Rubber Spacers and two (2) Hitch Washers, as well as the two (2) stock bolts that were removed from the saddlebag in Step 3. Place a washer and spacer onto each stock bolt. Apply a small amount of blue loctite to the threads of the bolts.

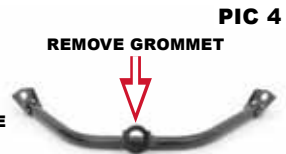


PIC 2



PIC 3

REAR FENDER A



PIC 4

REMOVE GROMMET

OFF BIKE VIEW

CROSS PIPE C



PIC 5

INSIDE LEFT (CLUTCH) SIDE SADDLEBAG

OFF BIKE VIEW

PIC 6

PIC 7

LEFT FRONT BRACE ON BOTTOM

LEFT REAR BRACE ON TOP



PIC 8

PIC 9



RUBBER WASHERS

HITCH WASHERS

STOCK BOLT



INSTALLATION INSTRUCTIONS

TRAILER HITCH FOR GL1800

6771

-CONTINUED-

STEP 8 Refer to PIC 10. Align the front mounting hole of the front brace with the front mounting hole of the saddlebag, and the front mounting hole of the rear brace with the rear mounting hole of the saddlebag. Be sure the braces are placed in between the saddlebag and the saddlebag mount.

STEP 9 Loosely fasten the brace assembly to the bottom of the saddlebag using the hardware assembly from Step 8.

STEP 10 Repeat steps 4 through 9 on the right (brake) side, using the provided Right Side Front and Back Brace.

STEP 11 Refer to PIC 11. Locate provided Hitch Receiver and Cross Pipe C mounting hardware that was removed in Step 3. Using the top two mounting holes of the Hitch Receiver, align and loosely fasten it to the mounting holes where the Cross Pipe C was attached on the bike.

STEP 12 Refer to FIG 1 and 2. Locate provided two (2) M12 x 1.75 x 30mm Flanged Hex Bolt and two (2) M12 x 1.75 Flanged Hex Nut. On the back side of the Hitch Receiver insert the Hex Bolts through the top of the aligned mounting holes of the receiver hitch and rear braces, and secure them in place with the Hex Nut. Do not fully tighten.

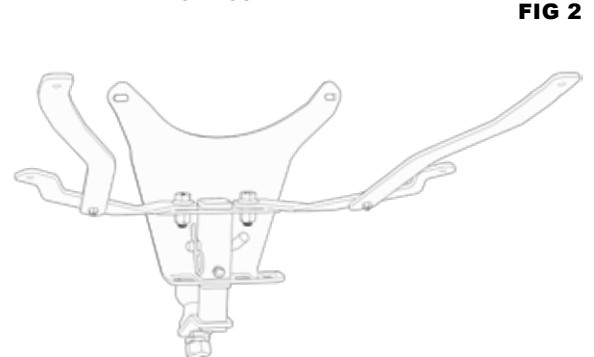
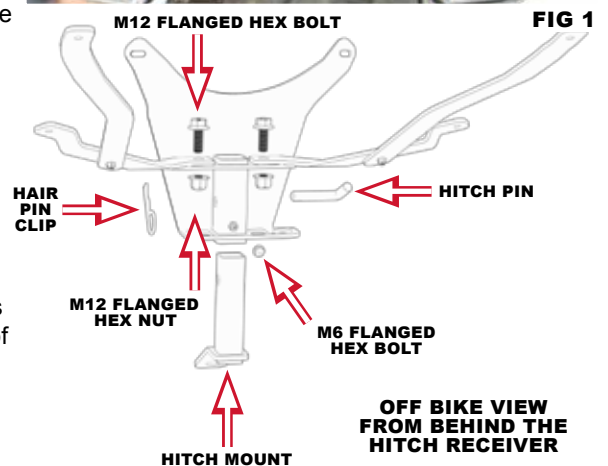
Note: Attach a ratchet extension piece to the ratchet and insert it through the bottom of the Hitch Receiver's safety chain hole, then attach the socket to the extension piece.

STEP 13 Fully tighten all hardware in the following order:

- Hex bolt and lock nut fastening the front and rear braces
- Stock bolts in the saddlebags fastening to the braces
- Stock bolts fastening the Hitch Receiver to the rear of the motorcycle
- Flanged Hex Bolt and Hex Nut fastening the Hitch Receiver to the Rear Braces

STEP 14 Refer to FIG 1 and 2. Locate provided Hitch Mount, Hitch Pin and Hair Pin Clip. Insert the Hitch Mount into the bottom of the Hitch Receiver. On the back side of the receiver align the pin hole of the receiver and the mount and insert the hitch pin. Secure it in place by attaching the hair pin clip through the small hole located on the end of the hitch pin.

STEP 15 Refer to FIG 1 and 2. Locate provided M6 x 1.0 x 12mm Flange Hex Head. Insert the bolt on the back side of the hitch receiver, behind the section where the hitch mount is inserted. Fully tighten hardware.



INSTALLATION INSTRUCTIONS

TRAILER HITCH FOR GL1800

6771

-CONTINUED-

- STEP 16** Refer to PIC 12 and 13. Locate provided Ball Hitch, Split Lock Washer, and 3/4"-16 Hex Nut. Align the Ball Hitch with the mounting hole on the Hitch Mount, and insert it through the top. Place the split lock washer onto the protruding end of the ball hitch, followed by the hex nut. Fully tighten hardware.

TORQUE VALUE FOR BALL HITCH:
220 FT-LBS (298.28 NM)

- STEP 17** Refer to PIC 14. Locate the rubber grommet that was removed from the Cross Pipe C in Step 3. Insert the grommet into the hole located on the front of the receiver hitch near the top.

- STEP 18** Double check the hardware. Be sure all hardware is fully tightened.
- Ball hitch to hitch mount connection (220 FT-LBS)
 - Receiver hitch to rear braces connection
 - Receiver hitch to rear of motorcycle connection
 - Rear braces to front braces connection
 - Front and rear braces to saddlebags connection

- STEP 19** Refer to PIC 15. Locate the Rear Fender A assembly and hardware that was removed in Step 2. Connect the license plate light and reinstall the Rear Fender A. Fully tighten hardware.

- STEP 20** Reinstall mufflers, if applicable.

NOTICE

IT IS THE INSTALLER'S RESPONSIBILITY TO ENSURE THAT ALL OF THE FASTENERS (INCLUDING PER-ASSEMBLED) ARE TIGHTENED BEFORE OPERATION OF THE MOTORCYCLE. KURYAKYN WILL NOT PROVIDE WARRANTY COVERAGE ON PRODUCTS OR COMPONENTS LOST DUE TO IMPROPER INSTALLATION OR LACK OF MAINTENANCE. PERIODIC INSPECTION AND MAINTENANCE ARE REQUIRED ON ALL FASTENERS.

