



KINETIC THROTTLE BOSS

6355

PARTS INCLUDED

- 1 Kinetic Throttle Boss—Black
- 1 #10-24 X 1/2" Socket Head Cap Screw
- 1 Installation Instructions

Please read and understand entire instructions before starting installation.

THANK YOU FOR CHOOSING KÜRYAKYN!

IN ORDER TO PROTECT YOU AND OTHERS FROM POSSIBLE INJURY AND/OR PROPERTY DAMAGE OR LOSS, PLEASE PAY CLOSE ATTENTION TO ALL INSTRUCTIONS, WARNINGS, CAUTIONS AND NOTICES REGARDING THE USE AND CARE OF THIS PRODUCT.

NOTICE	This indication alerts you to the fact that ignoring the contents described herein may negatively affect product performance and functionality.
CAUTION	This indication alerts you to the fact that ignoring the contents described herein can result in potential injury.

NOTICE	IF INSTALLING THIS PRODUCT FOR ANOTHER PARTY, PLEASE MAKE SURE THEY RECEIVE THIS COPY OF THE INSTALLATION INSTRUCTIONS SO THEY ARE AWARE OF THE IMPORTANT INFORMATION CONTAINED IN THEM.
---------------	--

TOOLS SUGGESTED

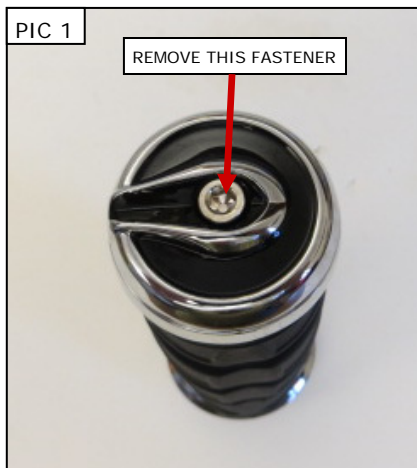
Set of Hex Wrenches

STRICTLY OBSERVE THE FOLLOWING GUIDELINES IN ORDER TO USE THE PRODUCT PROPERLY AND AVOID POTENTIALLY DANGEROUS ACCIDENTS.

STEP 1 Read and understand all steps in the instructions before starting the installation. Park the motorcycle on a hard, level surface and turn off the ignition.

NOTE: Pictures shown of Chrome parts. Installation of Black parts will be the same.

STEP 2 Remove the socket head cap screw securing the end cap to the Kinetic Grip. PIC 1 Remove the end cap. PIC 2



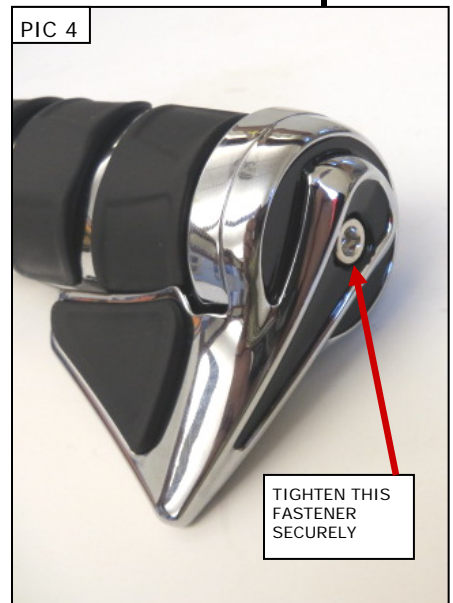
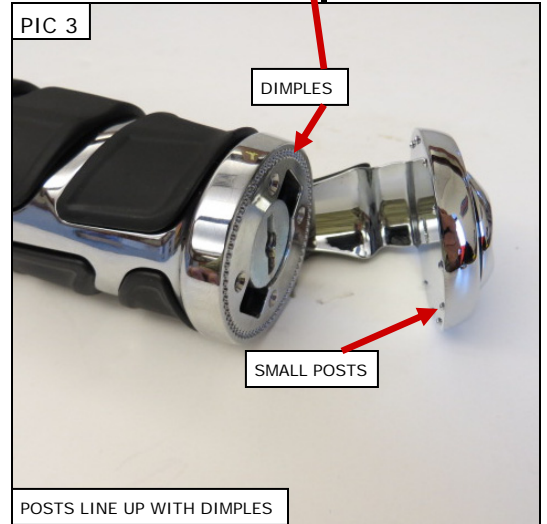
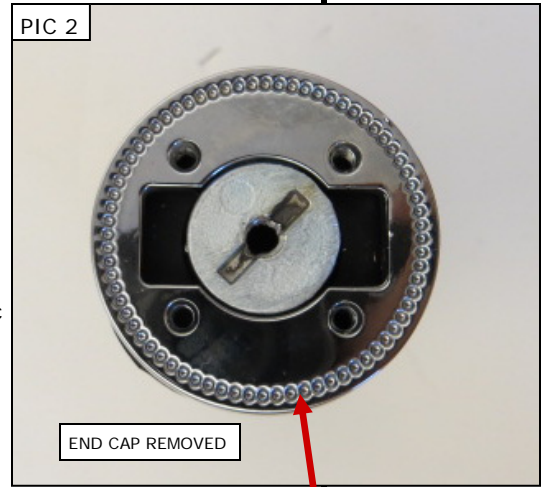
-cont.-

STEP 3 Place the Kinetic Throttle Boss over the end of the grip and loosely install the #10-32 X 1/2" socket head cap screw. PIC 3

STEP 4 Position the Kinetic Throttle Boss where it will be the most comfortable for you at cruising speeds and, making sure the small posts on the Kinetic throttle Boss line up with the dimples (PIC 4) in the Kinetic Grip, tighten the cap screw.

CAUTION Ensure that the installation of this product does not interfere with the proper operation of the motorcycle before riding.

NOTICE It is the installer's responsibility to ensure that all of the fasteners (including pre-assembled) are tightened before operation of the motorcycle. Kuryakyn will not provide warranty coverage on products or components lost due to improper installation or lack of maintenance. Periodic inspection and maintenance are required on all fasteners.



Ride On!