

INSTALLATION INSTRUCTIONS

RIDGEBACK FRONT SHIFT ARM FOR TOURING & TRIKE, CHROME

5802

THANK YOU FOR CHOOSING KURYAKYN!

Protect yourself and others from possible injury and property damage or loss. Pay close attention to all instructions, warnings, cautions, and notices regarding the installation, use, and care of this product.

WARNING THIS INDICATION ALERTS YOU TO THE FACT THAT IGNORING THE CONTENTS DESCRIBED HEREIN CAN RESULT IN POTENTIAL DEATH OR SERIOUS INJURY.

CAUTION THIS INDICATION ALERTS YOU TO THE FACT THAT IGNORING THE CONTENTS DESCRIBED HEREIN CAN RESULT IN MINOR OR MODERATE POTENTIAL INJURY.

NOTICE THIS INDICATION ALERTS YOU TO THE FACT THAT IGNORING THE CONTENTS DESCRIBED HEREIN MAY NEGATIVELY AFFECT PRODUCT PERFORMANCE AND FUNCTIONALITY OR DAMAGE THE PRODUCT ITSELF OR THE PRODUCT TO WHICH IT IS BEING ATTACHED.

ENSURE THAT THE FOLLOWING PARTS HAVE BEEN INCLUDED IN THE KIT:

- | | | | |
|---|-----------------|---|--------------------------------------|
| 1 | Front Shift Arm | 1 | Hardware Kit, containing: |
| | | 1 | 1/4-20 X .875" Socket Head Cap Screw |
| | | 1 | 1/4" Custom Flat Washer |
| | | 1 | 5/16" Custom Flat Washer |

YOU WILL ALSO NEED:

Combination wrench set, hex bit socket set, in-lbs and ft-lbs (Nm) torque wrench

NOTICE THESE INSTALLATION INSTRUCTIONS CONTAIN IMPORTANT INFORMATION. ENSURE THE END USER RECEIVES THIS COPY AND IS AWARE OF ITS IMPORTANCE FOR FUTURE USE.

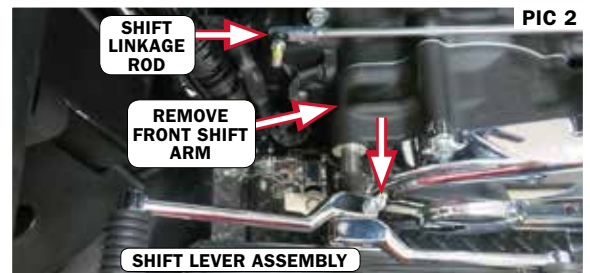
- STEP 1** Read and understand all steps in the instructions before starting the installation. Park the motorcycle on a hard, level surface and turn off the ignition. Let motorcycle cool.
- STEP 2** Remove the pinch screw from the lower front of the existing front shift arm; set it aside, it will not be reused.
- STEP 3** Detach the shift linkage from the existing front shift arm; remove the acorn nut and flat washer. Set hardware aside. The nut **WILL BE REUSED**, but the washer will **NOT**.
- STEP 4** Pull the existing shift lever assembly outward.
- STEP 5** Remove the existing front shift arm from the shift shaft of the shift lever assembly; set it aside, it will not be reused.
- STEP 6** Refer to PIC 3. Locate provided Front Shift Arm. Place the shift arm and align the splined mount of it with the shift shaft of the shift lever assembly. Insert and press in the shift lever assembly into the Front Shift Arm.

1/4" FLAT
WASHER

1/4-20 X
.875" SHCS

5/16" FLAT
WASHER

PIC 1



PIC 2



PIC 3

INSTALLATION INSTRUCTIONS

RIDGEBACK FRONT SHIFT ARM FOR TOURING & TRIKE, CHROME

5802

-CONTINUED-

- STEP 7** Refer to PIC 4 and 5. Locate provided Socket Head Cap Screw and 5/16" Flat Washer. Thread the washer onto the screw. Align and place the screw into the hole located in the lower front of the Front Shift Arm. Fully tighten it.

TORQUE VALUE FOR PINCH SCREW:
18-22 FT-LBS (24.4-29.8 NM)

- STEP 8** Refer to PIC 6. Realign the shifter linkage rod and insert the attached bolt through the top hole of the Front Shift Arm.

- STEP 9** Refer to PIC 6 and 7. Locate provided 1/4" Flat Washer and thread it onto the bolt of the shift linkage. Locate the acorn nut that was removed in Step 3 and fasten it to the shift linkage bolt. Fully tighten the acorn nut fastening the Front Shift Arm to the shift linkage rod.

TORQUE VALUE FOR SHIFT ROD TO SHIFT LEVER:
70-90 IN-LBS (7.9-10.2 NM)

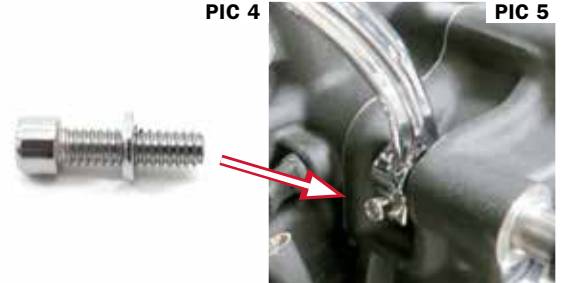
- STEP 10** Ensure that the entire shifter mechanism functions properly and does not interfere with the safe operation of the motorcycle before start-up.

WARNING DURING THE INSTALLATION OF THIS PRODUCT, THE VEHICLE MAY BE SHIFTED INTO GEAR. STARTING THE VEHICLE WHILE IN GEAR CAN CAUSE SUDDEN VEHICLE MOVEMENT RESULTING IN SERIOUS INJURY OR DEATH. ENSURE THE VEHICLE IS NOT IN GEAR BEFORE START-UP.

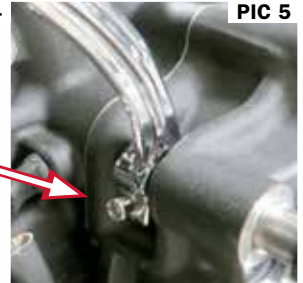
NOTICE IF FURTHER SHIFTER ADJUSTMENT IS NECESSARY, CONSULT THE SERVICE MANUAL FOR YOUR SPECIFIC MODEL OF MOTORCYCLE.

NOTICE IT IS THE INSTALLER'S RESPONSIBILITY TO ENSURE THAT ALL OF THE FASTENERS (INCLUDING PRE-ASSEMBLED) ARE TIGHTENED BEFORE OPERATION OF THE MOTORCYCLE. KURYAKYN WILL NOT PROVIDE WARRANTY COVERAGE ON PRODUCTS OR COMPONENTS LOST DUE TO IMPROPER INSTALLATION OR LACK OF MAINTENANCE. PERIODIC INSPECTION AND MAINTENANCE ARE REQUIRED ON ALL FASTENERS.

PIC 4



PIC 5



PIC 6



PIC 7



FINAL

