



PILOT PEGS

4419

PARTS INCLUDED

- 2 Pilot Peg Assemblies without Adapters
- 1 Anti-Seize Pack
- 1 Installation Instructions

Please read and understand entire instructions before starting installation.

THANK YOU FOR CHOOSING KÜRYAKYN!

IN ORDER TO PROTECT YOU AND OTHERS FROM POSSIBLE INJURY AND/OR PROPERTY DAMAGE OR LOSS, PLEASE PAY CLOSE ATTENTION TO ALL INSTRUCTIONS, WARNINGS, CAUTIONS AND NOTICES REGARDING THE USE

WARNING THIS INDICATION ALERTS YOU TO THE FACT THAT IGNORING THE CONTENTS DESCRIBED HEREIN CAN RESULT IN POTENTIAL DEATH OR SERIOUS INJURY.

NOTICE This indication alerts you to the fact that ignoring the contents described herein may negatively affect product performance and functionality.

NOTICE IF INSTALLING THIS PRODUCT FOR ANOTHER PARTY, PLEASE MAKE SURE THEY RECEIVE THIS COPY OF THE INSTALLATION INSTRUCTIONS SO THEY ARE AWARE OF THE IMPORTANT INFORMATION CONTAINED IN THEM.

AND CARE OF THIS PRODUCT.

TOOLS SUGGESTED

Set of Combination Wrenches, Set of Hex Wrenches

STRICTLY OBSERVE THE FOLLOWING GUIDELINES IN ORDER TO USE THE PRODUCT PROPERLY AND AVOID POTENTIALLY DANGEROUS ACCIDENTS.

STEP 1 Read and understand all steps in the instructions before starting the installation. Park the motorcycle on a hard, level surface and turn off the ignition. Let cool.

NOTE: These pegs require the separate purchase of the appropriate Küryakyn footpeg adapter for your model.

WARNING YOU WILL BE WORKING AROUND THE ENGINE AND EXHAUST SYSTEM DURING INSTALLATION. ENSURE THAT THE ENGINE AND EXHAUST SYSTEM HAVE FULLY COOLED TO PREVENT INJURY.

WARNING A FACTORY SERVICE MANUAL WILL BE HELPFUL IN PERFORMING THIS INSTALLATION. DO NOT ATTEMPT TO PERFORM THIS INSTALLATION IF YOU ARE NOT CONFIDENT IN YOUR ABILITY TO COMPLETE ALL OF THE STEPS IN THE PROCEDURE; CONSULT A TRAINED TECHNICIAN. IMPROPER INSTALLATION COULD RESULT IN SERIOUS INJURY OR DEATH.

STEP 2 Remove the stock peg from the clevis. Pay attention to any spacers or washers installed between the male mount and the clevis, it may be helpful later. Set this hardware aside, it may be reused.

STEP 3 Install the new peg adapter as per the instructions with the peg adapter. Check that the peg adapter is installed correctly and the adapter is able to fold upward.

WARNING FOOTPEGS MUST BE INSTALLED SO THEY WILL FOLD UPWARD AND REARWARD IF HIT BY ANY OBJECT. FAILURE TO ADJUST THE FOOTPEGS TO OPERATE IN THIS MANNER COULD RESULT IN SERIOUS INJURY OR DEATH.

STEP 4 Remove the two button socket cap screws from the pilot peg body; pull the top plastic pad from the peg body. Remove brass fastener. Save for later use. Remove upper rubber pad. PIC 1

NOTICE Ensure that the supplied anti-seize is applied to all threaded fasteners before installation; this will make future removal of the fasteners easier.

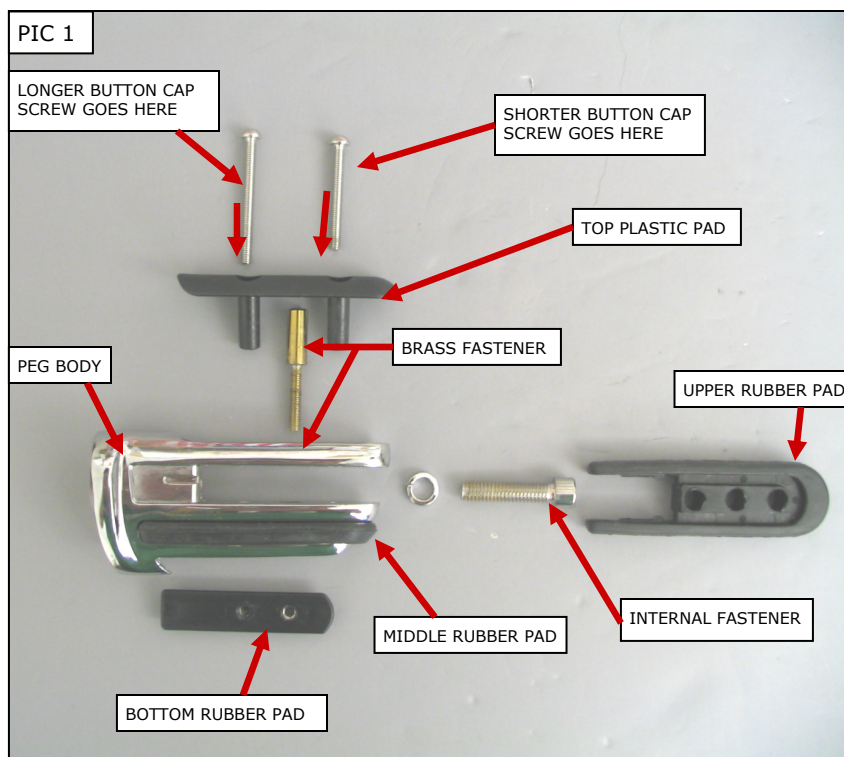
STEP 5 Place the peg on the peg adapter and loosely install the 5/16"-18 internal fastener (PIC 1) located on the end of the peg.

STEP 6 Rotate the peg body to the desired position; tighten the internal fastener.

STEP 7 Install the upper rubber pad; install the brass set screw and tighten. Install the top plastic pad and the two button socket cap screws. PIC 1

STEP 8 Repeat Steps 2 through 7 for the other peg.

NOTICE It is the installer's responsibility to ensure that all of the fasteners (including pre-assembled) are tightened before operation of the motorcycle. Küryakyn will not provide warranty coverage on products or components lost due to improper installation or lack of maintenance. Periodic inspection and maintenance are required on all fasteners.



Ride On!