

INSTALLATION INSTRUCTIONS

PHANTOM BAR END MIRRORS, GLOSS BLACK

1959

THANK YOU FOR CHOOSING KURYAKYN!

Protect yourself and others from possible injury and property damage or loss. Pay close attention to all instructions, warnings, cautions, and notices regarding the installation, use, and care of this product.

WARNING THIS INDICATION ALERTS YOU TO THE FACT THAT IGNORING THE CONTENTS DESCRIBED HEREIN CAN RESULT IN POTENTIAL DEATH OR SERIOUS INJURY.

CAUTION THIS INDICATION ALERTS YOU TO THE FACT THAT IGNORING THE CONTENTS DESCRIBED HEREIN CAN RESULT IN MINOR OR MODERATE POTENTIAL INJURY.

NOTICE THIS INDICATION ALERTS YOU TO THE FACT THAT IGNORING THE CONTENTS DESCRIBED HEREIN MAY NEGATIVELY AFFECT PRODUCT PERFORMANCE AND FUNCTIONALITY OR DAMAGE THE PRODUCT ITSELF OR THE PRODUCT TO WHICH IT IS BEING ATTACHED.

ENSURE THAT THE FOLLOWING PARTS HAVE BEEN INCLUDED IN THE KIT:

1	Left Mirror Assembly	1	Hardware Kit - CONTINUED -
1	Right Mirror Assembly	2	Anti-Friction Disk, Nylon
1	Hardware Kit, containing:	6	Wedge
2	M6x1.0x65mm Socket Head Cap Screws	2	Threaded Wedge
2	Sliding Wedge	2	O-Ring

YOU WILL ALSO NEED:

Metric hex wrench set, combination wrench set, razor blade, 7/8" (or larger) drill bit

PICTURES SHOWN ARE OF THE CHROME PARTS. INSTALLATION OF THE BLACK PARTS WILL BE THE SAME.

NOTICE THESE INSTALLATION INSTRUCTIONS CONTAIN IMPORTANT INFORMATION. ENSURE THE END USER RECEIVES THIS COPY AND IS AWARE OF ITS IMPORTANCE FOR FUTURE USE.

STEP 1 Read and understand all steps in the instructions before starting the installation. Park the motorcycle on a hard, level surface and turn off the ignition. Let motorcycle cool.

Note: Proper installation may require cutting or drilling a 5/8" hole in the end of the OEM grips. Proper installation requires 7/8" or 1" handlebars that have open ends.

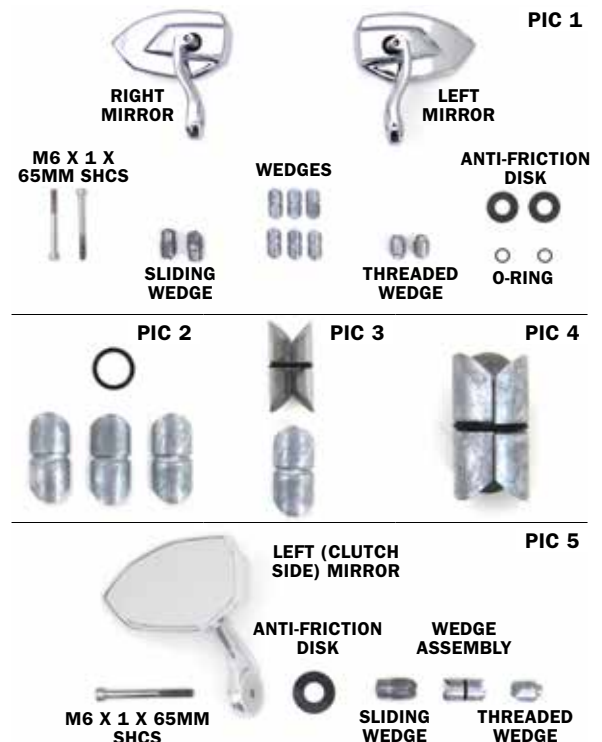
STEP 2 Grip style will vary. Prepare your grips and handlebars accordingly. Either remove existing end cap covers from each end, or remove bar ends and cut or drill a 7/8" hole in the end of the grips. Hole size can be larger, if necessary.

STEP 3 Refer to PIC 2. Locate provided three (3) Wedges and an O-ring.

STEP 4 Refer to PIC 3. Place two (2) of the wedges together and wrap the O-ring around the outside of the wedges. Be sure the o-ring is set within the horizontal center line groove of the wedge.

STEP 5 Refer to PIC 4. Carefully slide and align the third wedge under the o-ring, to fully secure the three (3) wedges together.

STEP 6 Refer to PIC 5. Locate provided one (1) mirror, one (1) M6 Screw, one (1) Anti-Friction Disk, one (1) Sliding Wedge, one (1) Threaded Wedge, and one (1) wedges and o-ring assembly.



INSTALLATION INSTRUCTIONS

PHANTOM BAR END MIRRORS, GLOSS BLACK

1959

-CONTINUED-

- STEP 7** Refer to PIC 6. Insert the screw through the mirror's mounting hole. Place the anti-friction disc on the screw, followed by the sliding wedge, the wedge and o-ring assembly, and the threaded wedge. Lightly tighten the threaded wedge until all wedge pieces are touching.

Note: If the threaded wedge is tightened any further it will cause the wedge and o-ring assembly to expand, which could cause difficulty for installation to the grip.

- STEP 8** Refer to PIC 7. Align and place the mirror assembly into the end of the grip.

- STEP 9** Tighten the screw at the end of the Bar End Mirror mount until it does not spin in the end of the grip. Be careful not to over tighten.

- STEP 10** Adjust the mirror for proper view before riding the motorcycle.

CAUTION ROTATE THE HANDLEBARS LOCK TO LOCK TO ENSURE THERE IS NO CONTACT BETWEEN THE BAR END MIRROR MOUNT AND ANY COMPONENT ON THE MOTORCYCLE OR THE OPERATOR.

CAUTION ENSURE THAT THE INSTALLATION OF THIS PRODUCT DOES NOT INTERFERE WITH THE PROPER OPERATION OF THE MOTORCYCLE BEFORE RIDING.

- STEP 11** Repeat Step 2 through 10 on the opposite side.

NOTICE IT IS THE INSTALLER'S RESPONSIBILITY TO ENSURE THAT ALL OF THE FASTENERS (INCLUDING PRE-ASSEMBLED) ARE TIGHTENED BEFORE OPERATION OF THE MOTORCYCLE. KURYAKYN WILL NOT PROVIDE WARRANTY COVERAGE ON PRODUCTS OR COMPONENTS LOST DUE TO IMPROPER INSTALLATION OR LACK OF MAINTENANCE. PERIODIC INSPECTION AND MAINTENANCE ARE REQUIRED ON ALL FASTENERS.

PIC 6



PIC 7

LEFT (CLUTCH SIDE) VIEW



FINAL

