



**SKELETON HAND MIRROR SET 1758**

**PARTS INCLUDED**

- 1 Left Skeleton Hand Mirror—Black Head—Black Stem
- 1 Right Skeleton Hand Mirror—Black Head—Black Stem
- 1 Hardware Kit Containing:
  - 2 5/16"-18 X 1-1/2" Socket Head Cap Screws
  - 2 5/16"-18 X 2" Socket Head Cap Screws
  - 2 5/16" Split Lock Washers
  - 2 5/16" Internal Tooth Lock Washers
  - 2 Double End Threaded Studs
- 1 Metric Hardware Kit Containing:
  - 2 5/16" to M10-1.25 Adapter Studs
  - 2 M10-1.25 Jam Nuts
  - 1 5/16" to M10-1.25 Left Hand Thread Adapter Stud
  - 1 5/16" - M10 Left Hand Thread Jam Nut
- 2 #10-32 X 3/16" Set Screws
- 1 Installation Instructions

Please read and understand entire instructions before starting installation.

**THANK YOU FOR CHOOSING KÜRYAKYN!**

**IN ORDER TO PROTECT YOU AND OTHERS FROM POSSIBLE INJURY AND/OR PROPERTY DAMAGE OR LOSS, PLEASE PAY CLOSE ATTENTION TO ALL INSTRUCTIONS, WARNINGS, CAUTIONS AND NOTICES REGARDING THE USE AND CARE OF THIS PRODUCT.**

<b>NOTICE</b>	This indication alerts you to the fact that ignoring the contents described herein may negatively affect product performance and functionality.
<b>CAUTION</b>	This indication alerts you to the fact that ignoring the contents described herein can result in potential injury.

<b>NOTICE</b>	<b>IF INSTALLING THIS PRODUCT FOR ANOTHER PARTY, PLEASE MAKE SURE THEY RECEIVE THIS COPY OF THE INSTALLATION INSTRUCTIONS SO THEY ARE AWARE OF THE IMPORTANT INFORMATION CONTAINED IN THEM.</b>
---------------	---

**TOOLS SUGGESTED**

Set of Hex Wrenches, Set of Combination Wrenches, Red Thread Locker

**STRICTLY OBSERVE THE FOLLOWING GUIDELINES IN ORDER TO USE THE PRODUCT PROPERLY AND AVOID POTENTIALLY DANGEROUS ACCIDENTS.**

- STEP 1** Read and understand all steps in the instructions before starting the installation. Park the motorcycle on a hard, level surface and turn off the ignition.
- STEP 2** Remove the stock mirrors from the hand controls; set them aside, they will not be re-used.

<b>NOTICE</b>	<b>Avoid damage to the motorcycle. Protect painted surfaces with a soft cloth or blanket.</b>
---------------	---

**INSTALLATION ON HARLEY DAVIDSON MODELS**

- STEP 3** Determine which of the included socket head cap screws will provide maximum thread engagement in the mirror stem without bottoming out.

**-cont.-**

**STEP 4** Place a split lock washer over the socket head cap screw and insert it in the hole in the hand control. FIG 1

**STEP 5** Place an internal lock washer over the protruding end of the socket head cap screw.

**STEP 6** While holding the mirror in place, thread the socket head cap screw into the bottom of the mirror stem.

**NOTE:** Ensure that the setscrew in the mirror stem does not prevent the socket head cap screw from being installed fully. FIG 1

**STEP 7** Adjust the position of the mirror stem for visibility and clearance; tighten the socket head cap screw and then the setscrew.

**STEP 8** Repeat STEP 3 through STEP 7 for the opposite side.

**H-D WITH BOTTOM MOUNTED TURN SIGNALS**  
**Right Side Procedure**

**STEP 9** Loosen and remove the retainer nut and ball stud clamp shown in FIG 2

**CAUTION** Removing the retainer nut and /or the ball stud clamp will release the turn signals from the hand controls. Secure the turn signals to prevent damage or injury.

**NOTICE** Avoid damage to the motorcycle. Protect painted surfaces with a soft cloth or blanket.

**STEP 10** Remove the stock mirror; hold the stock turn signal to prevent it from being damaged.

**STEP 11** Screw a double ended stud into the new mirror stem; tighten and then tighten the set screw. FIG 2

**NOTE:** Ensure that the setscrew in the mirror stem does not prevent the double ended stud from being installed fully. FIG 2

**STEP 12** Place an internal lock washer over the long end of one of the double-ended studs; insert the assembly into the mirror stem hole in the hand control. FIG 2

**STEP 13** Place a split lock washer over the protruding end of the double-ended stud and thread the retainer nut onto the stud. FIG 2

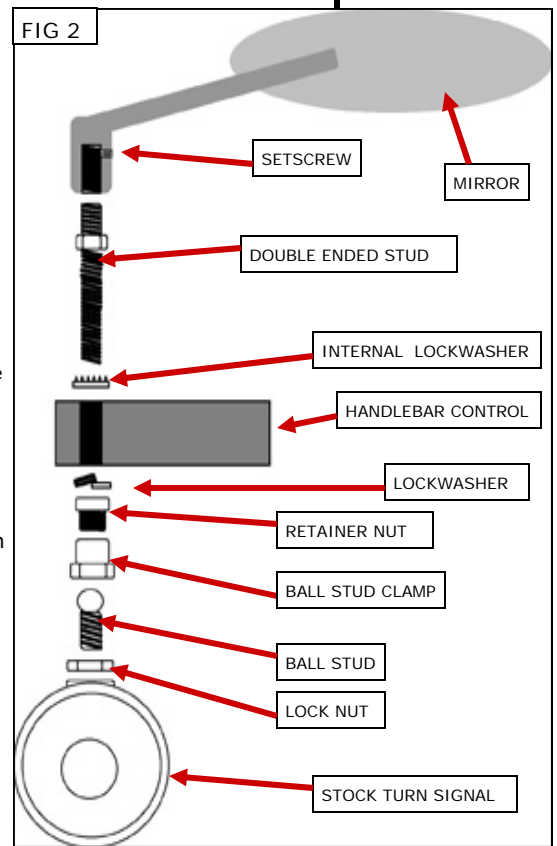
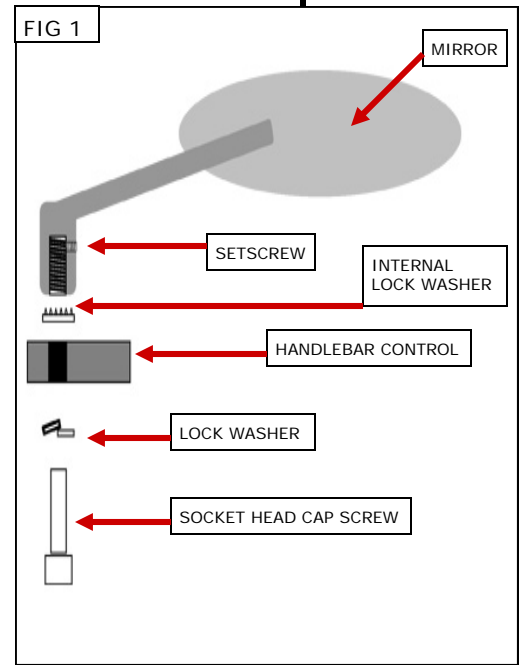
**STEP 14** Adjust the position of the mirror stem for visibility and clearance; tighten the retaining nut.

**STEP 15** Install the ball stud clamp onto the retainer nut; adjust the turn signal and tighten the clamp.

**STEP 16** Repeat STEP 2 through STEP 8 for the LEFT SIDE.

**STEP 17** Adjust the mirrors for proper view before riding the motorcycle.

**NOTICE** It is the installer's responsibility to ensure that all of the fasteners (including pre-assembled) are tightened before operation of the motorcycle. Küryakyn will not issue a warranty on components lost due to improper installation. Periodic maintenance may be required.



## INSTALLATION FOR HONDA, KAWASAKI, SUZUKI AND VICTORY MODELS AND RIGHT SIDE ON YAMAHA MODELS

- STEP 18** Place a drop of Red thread locker on the end of the adapter that threads into the right side mirror and thread the adapter into the stem of the mirror until it bottoms. **DO NOT exceed 20 foot pounds of torque** when tightening the adapter to the mirror stem. Secure with set screw to your mirrors. PIC 1
- STEP 19** Thread the jam nut with right hand threads to opposite end of adapter until loosely seated against stop. PIC 2
- STEP 20** Thread mirror and adapter assembly to the stock mirror mounting point on right side of bike until loosely seated. Back (unthread) the assembly out to the desired vision position.
- STEP 21** Thread the jam nut down the adapter to the stock mirror mounting point. Finger tighten. PIC 3
- STEP 22** Holding the adapter with a wrench in adjusted position, tighten jam nut to the stock mirror mounting point.
- STEP 23** Tighten all fasteners.
- STEP 24** **For Yamaha Models:** Proceed to Step 26 below for left side.  
**For all other models:** Repeat for Steps 18 through 23 the other side.
- STEP 25** Adjust the mirrors for proper view before riding the motorcycle.

### NOTICE

It is the installer's responsibility to ensure that all of the fasteners (including pre-assembled) are tightened before operation of the motorcycle. Kuryakyn will not issue a warranty on components lost due to improper installation. Periodic maintenance may be required.

## INSTALLATION FOR LEFT SIDE ON YAMAHA MODELS

- STEP 26** Place a drop of Red thread locker on the end of the adapter that threads into the mirror and thread the M10-1.25 adapter with left hand threads into the stem of the left side mirror until it bottoms. **DO NOT exceed 20 foot pounds of torque** when tightening the adapter to the mirror stem. Secure with set screw to your mirrors. PIC 1
- STEP 27** Thread mirror and adapter assembly to the stock mirror mounting point on left side of bike until loosely seated.
- STEP 28** Thread jam nut down adapter to mounting point. Finger tighten. PIC 3
- STEP 29** Thread mirror and adapter assembly to mounting point on left side of bike until loosely seated. Back (unthread) the assembly out to the desired vision position.
- STEP 30** Holding the adapter with a wrench in adjusted position, tighten jam nut to the stock mirror mounting point.
- STEP 31** Tighten all fasteners.
- STEP 32** Adjust the mirrors for proper view before riding the motorcycle.

### NOTICE

It is the installer's responsibility to ensure that all of the fasteners (including pre-assembled) are tightened before operation of the motorcycle. Kuryakyn will not issue a warranty on components lost due to improper installation. Periodic maintenance may be required.

