



PREMIUM XL ACCESSORY MOUNT with PERCH MOUNT 1682

PARTS INCLUDED

- 1 Mounting Plate
- 1 Perch Mount
- 1 Perch Mount Kit
 - 2 1/4-20 x 2" Button Socket Cap Screws
 - 2 1/4-20 x 2-1/4" Button Socket Cap Screws
 - 2 M6 x 1.0 x 55mm Button Socket Cap Screws
 - 2 Washers
 - 2 Spacers
- 1 Universal Handlebar Accessory Mount Kit
 - 2 3/4" x 2" Foam Adhesive Pads
 - 1 8" x 1/2" Hook and Loop Strap
 - 4 #8-32 X 1" Phillips Head Pan Screws
 - 4 #8-32 Nylock Nuts
 - 4 #8 Flat Washers
 - 4 6" Black Nylon Cable Ties
 - 1 Anti-Seize Packet
- 1 Hardware Kit
 - 2 Shim Washers
 - 1 5/16" Split Lock Washer
 - 1 Thumb Nut
- 1 Installation Instructions

Please read and understand entire instructions before starting installation.

THANK YOU FOR CHOOSING KÜRYAKYN!

IN ORDER TO PROTECT YOU AND OTHERS FROM POSSIBLE INJURY AND/OR PROPERTY DAMAGE OR LOSS, PLEASE PAY CLOSE ATTENTION TO ALL INSTRUCTIONS, WARNINGS, CAUTIONS AND NOTICES REGARDING THE USE AND CARE OF THIS PRODUCT.

⚠ WARNING	THIS INDICATION ALERTS YOU TO THE FACT THAT IGNORING THE CONTENTS DESCRIBED HEREIN CAN RESULT IN POTENTIAL DEATH OR SERIOUS INJURY.
NOTICE	This indication alerts you to the fact that ignoring the contents described herein may negatively affect product performance and functionality or damage the product itself or the product it is being attached to.
⚠ CAUTION	This indication alerts you to the fact that ignoring the contents described herein can result in minor or moderate potential injury.

TOOLS SUGGESTED

Phillips Screwdriver, Set of Combination Wrenches, Set of Hex Wrenches, Adjustable Wrench

STRICTLY OBSERVE THE FOLLOWING GUIDELINES IN ORDER TO USE THE PRODUCT PROPERLY AND AVOID POTENTIALLY DANGEROUS ACCIDENTS.

NOTICE

IF INSTALLING THIS PRODUCT FOR ANOTHER PARTY, PLEASE MAKE SURE THEY RECEIVE THIS COPY OF THE INSTALLATION INSTRUCTIONS SO THEY ARE AWARE OF THE IMPORTANT INFORMATION CONTAINED IN THEM.

STEP 1 Read and understand all steps in the instructions before starting the installation. Park the motorcycle on a hard, level surface and turn off the ignition.

-cont.-



Ensure that the installation of this product does not interfere with the proper operation of the motorcycle before riding.



Avoid damage to the motorcycle. Protect painted surfaces with a soft cloth or blanket.



It is the installer's responsibility to ensure that there is adequate clearance between the Tech-Connect and any painted surfaces. Kuryakyn is not responsible for any damage due to inadequate clearance.



Be aware of any cables/wires that could potentially be pinched or crushed while using this product.

STEP 2 Place a clean, soft blanket over the gas tank to protect the paint.

STEP 3 Select either the clutch or brake perch for mounting the arm. The arm will usually point towards the center of the bike. Remove the bottom screw securing the clutch or brake perch halves as shown in PIC 1; this will not be used again.

STEP 4 Identify the correct screw, either the metric or standard, by comparing threads on the included screws to the threads from the screws that were removed. The 1/4"-20 x 2-1/4" screws are generally used on older H-D motorcycles, the 1/4"-20 X 2" screws on newer Harleys and the M6 X 1.0 X 55mm on Metric bikes.



Use the supplied anti-seize for fasteners; this will prevent galling and make future removal of fasteners easier.

STEP 5 As shown in PIC 2, place the washer over the screw, then insert through the perch mount arm and place the spacer over the screw then add a dab of anti-seize to the screw end.

STEP 6 As shown in PIC 3, place the arm, screw, washer and spacer on the perch and start the screw, finger tighten the screw.

STEP 7 Remove the upper screw securing the perch mounting halves; it will not be used again. PIC 3

STEP 8 Rotate the arm up into position and install the screw, washer, and spacer, while using a dab of anti-seize as in STEP 5. PIC 3

STEP 9 Tighten both of the screws securely.

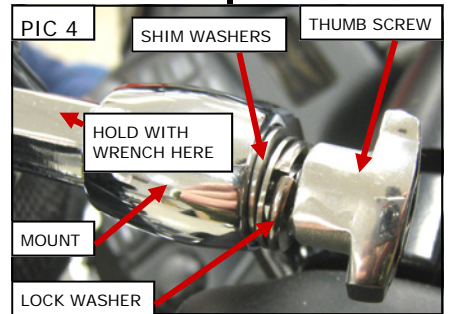
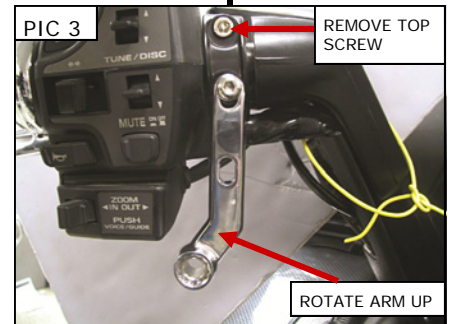
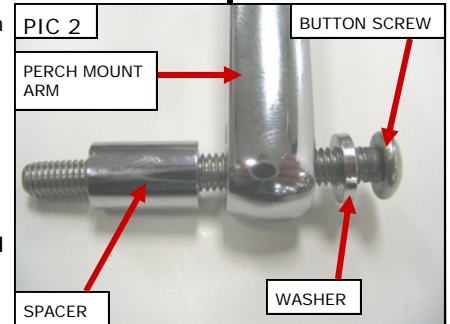
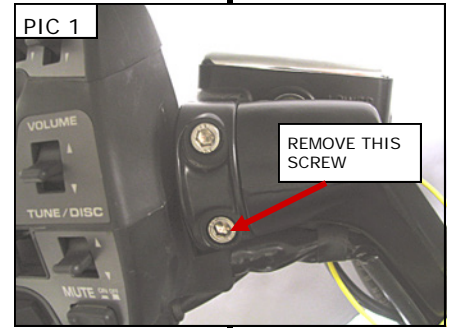
STEP 10 To mount the mounting plate, place the shaft through the perch mount arm, place the split lock washer and one or two of the shims (PIC 4) over the protruding end. Use a dab of anti-seize on the threads and secure with the thumb nut (use an adjustable wrench to hold the hex portion of the shaft when tightening the Thumb Nut). The hex on the mounting plate shaft will fit into the hex recess on the perch mount to allow mounting options.



Check the Thumbscrew and all other fasteners before each ride.

STEP 11 Turn the handlebars in both directions to their full stop position and ensure that there is clearance between the mounting plate/accessory and the gas tank, dash and other accessories.

STEP 12 Adjust the Accessory Mount to desired position; tighten the Thumb Nut (use an adjustable wrench to hold the hex portion of the shaft when tightening the Thumb Nut PIC 4) and Clamp screws. To increase the tension on the ball mount, tighten the two socket head cap screws. To decrease the tension on the ball mount, loosen the socket head cap screws. PIC 5





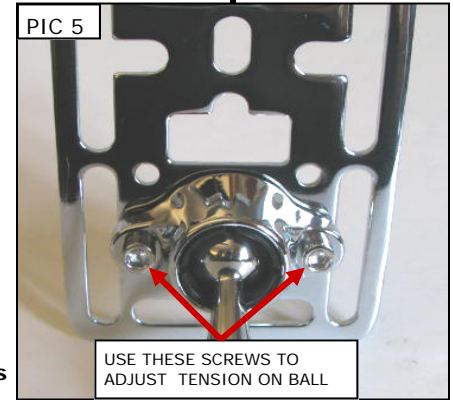
ENSURE THAT THERE IS CLEARANCE AT ALL POINTS WHEN THE HANDLEBARS ARE TURNED, INSUFFICIENT CLEARANCE MAY CAUSE DAMAGE TO THE MOTORCYCLE OR CAN CAUSE LOSS OF CONTROL THAT COULD RESULT IN SEVERE INJURY OR DEATH.



TO PREVENT POSSIBLE LOSS OF CONTROL, WHICH COULD RESULT IN A POSSIBLE INJURY OR DEATH, WE DO NOT RECOMMEND REMOVING, REPLACING OR ADJUSTING THE DEVICE ON THE ACCESSORY MOUNT PLATE WHILE RIDING THE MOTORCYCLE .



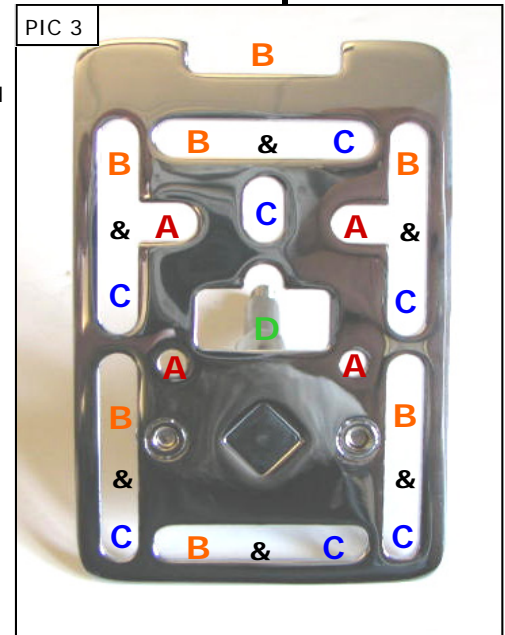
It is the installer's responsibility to ensure that all of the fasteners (including pre-assembled) are tightened before operation of the motorcycle. Küryakyn will not provide warranty coverage on products or components lost due to improper installation or lack of maintenance. Periodic inspection and maintenance are required on all fasteners.



USING THE ACCESSORY MOUNT PLATE

NOTE: Works well with Küryakyn Accessory Pouches and Ram Device Holders.

- The 4-hole AMPS pattern ("A" in PIC.6) is common to many GPS and satellite radio docking cradles. The included #8-32 X 1" Phillips Head Screws, #8 Flat Washers and #8 nylon insert lock nuts can be used to mount cradles to the stainless steel mounting plate. You may use any combination of slots and hardware to securely mount your accessory to the mounting plate.
- Hook and loop strap keepers ("B" in PIC.3).
- General-purpose mounting slots ("C" in PIC.3).
- Belt clip retainer ("D" in PIC.3).
- Küryakyn pouches will bolt to the top "B" & "C" slot and the notch in "D"
- Ram Mounts will use either the top or bottom "B" & "C" side slots
- The adhesive foam has been included for vibration dampening where necessary.
- The included cable ties and cord keepers have been included to secure accessory wiring out of the way of pinch points, extreme heat and moving parts.
- The stainless steel mounting plate can be drilled and tapped to accommodate different mounting patterns.



DO NOT ATTEMPT TO OPERATE OR REMOVE THE MOBILE DEVICE FROM THE MOUNT PLATE WHILE OPERATING THE MOTORCYCLE.



Ensure that the Mobile Device is secure on the Accessory Mount. Küryakyn is not responsible for any Device that is stolen or damaged from use in this Mount or from the Mount not being properly secured to the motorcycle. It is the installer's responsibility to ensure that all of the fasteners (including pre-assembled) are tightened before operation of the motorcycle. Küryakyn will not issue a warranty on components lost due to improper installation. Periodic inspection and maintenance are required on all fasteners.



Motorcycling can be done in a harsh environment. Make sure your Mobile Device is appropriate for this application.



Secure all wiring from the newly installed and/or from existing parts, away from any moving parts, pinch points or extreme heat. Küryakyn WILL NOT issue a warranty on any electrical component that fails due to pinched, crimped, broken, abraded, melted or frayed wires.

Ride On!