



Thank you for purchasing our Honda GROM Gear Indicator. Before operating the meter, please read this instruction sheet and keep it for future reference.

⚠ Notice

1. This meter works on DC12V applications only.
2. For installation, please follow the steps described below. Any damage caused by a wrong installation shall be imputed to the user.
3. Do not cut or modify the wire terminal. To avoid shortcircuits, do not pull the wires when installing.
4. Do not disassemble or change any parts.
5. Maintenance or repair should be executed by our professionals only. Opening the instrument will void the warranty.
6. While riding the vehicle, do not attempt to change the settings in order to avoid injuries.
7. This meters only works with digital speed / RPM signal (TTL SIGNAL 0-5V) motorcycles.

MARK MEANING:

NOTE Some procedures must be followed to avoid damage to the meter.

⚠ WARNING! Some procedures must be followed to avoid any injuries.

⚠ CAUTION! Some procedures must be followed to avoid damages to your vehicle.



Press the
button once



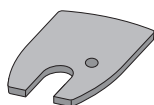
Press the
button 3
seconds

1 Accessories

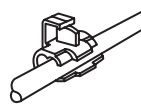
1 Meter X1



2 Velcro X1



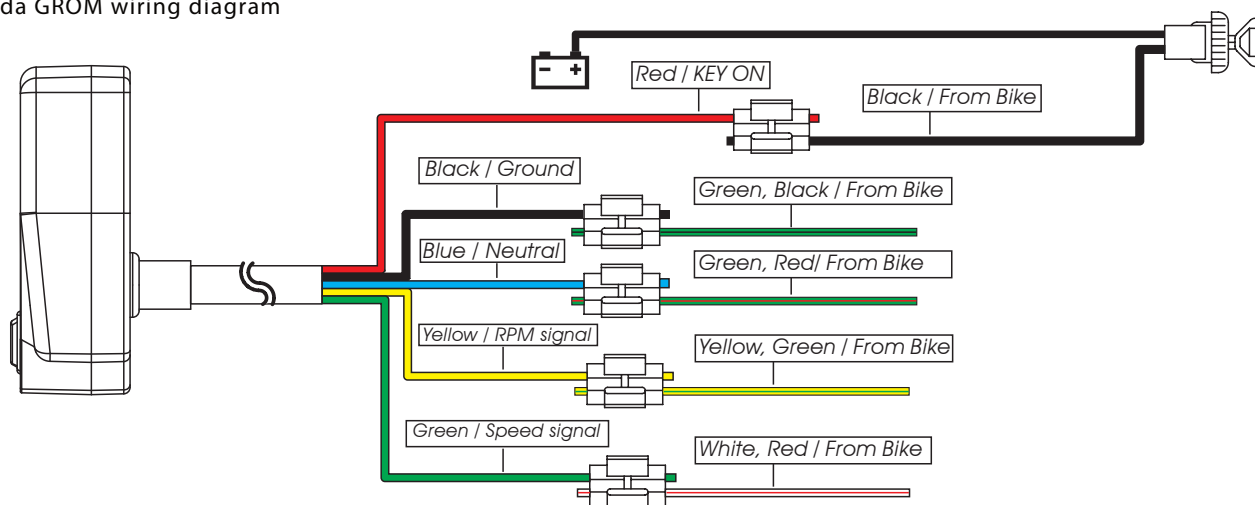
3 Mid-way connector X5



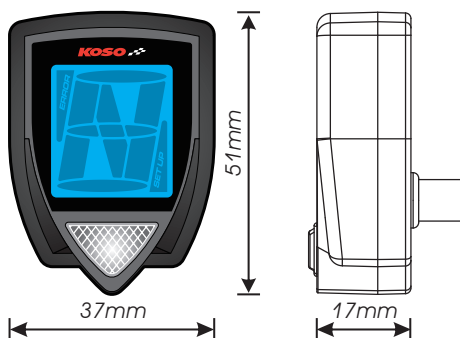
NOTE Please contact your local distributor if the items received are not the same as the ones listed above.

2 Wiring installation

Honda GROM wiring diagram



3 Functions

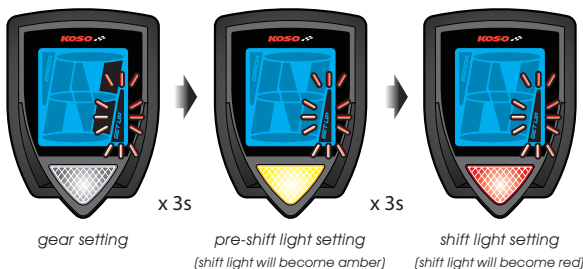


- Gear meter Display range: N, 1, 2, 3, 4, 5, 6, 7
- Effective voltage DC 12V
- Effective temperature range -10~+60°C (14~140°F)
- Meter standard JIS D 0203
- Meter size 37 X 51 X 17mm
- Meter weight ~51g

NOTE Design and specification are subject to change without notice.

NOTE When the speed is too low, the meter might not be able to detect any signal.

4-1 Setting instructions



- To enter the gear setting mode, press and hold the button behind the meter for 3 seconds.
- Press the button again for 3 seconds in order to enter the pre-shift light setting (button will become amber) and once more for 3 seconds to set the shift light (button will become red).

NOTE If no action is taken, the meter will automatically go back to the main screen after 30 seconds.

4-2 Gear & shift light settings

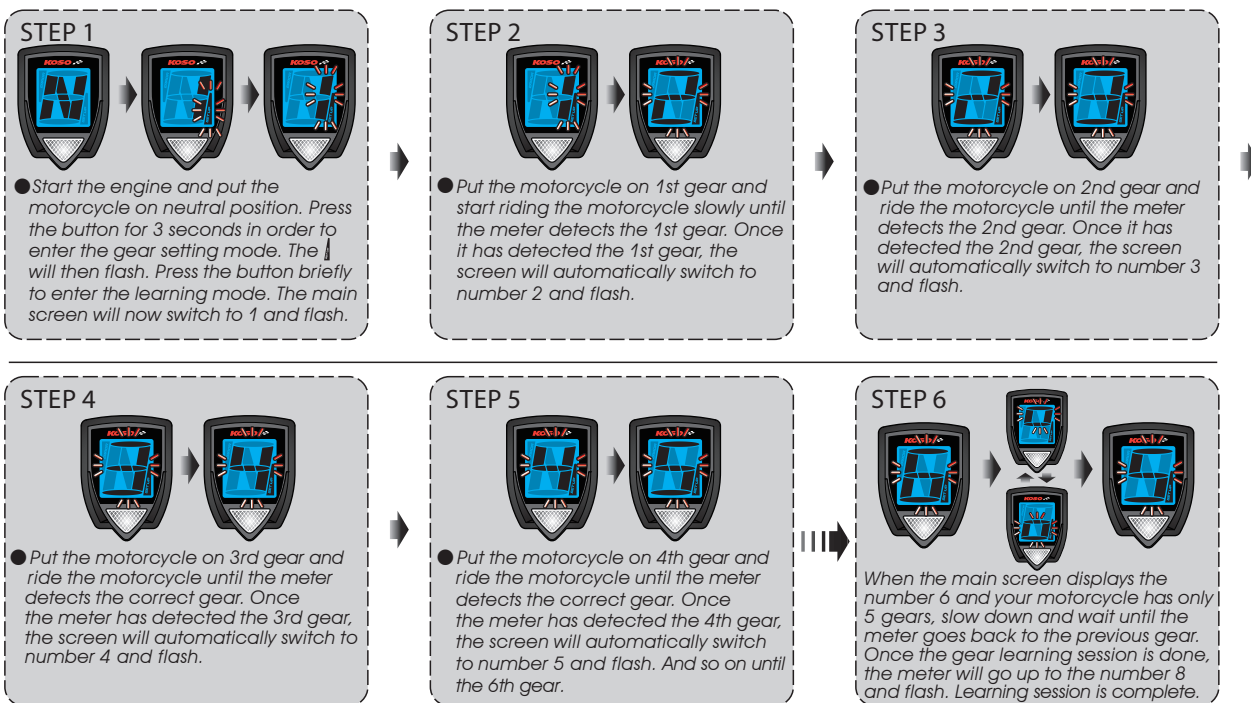
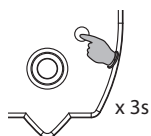


- If the meter can not detect the current gear, the screen will indicate "---" and flash.



Gear learning setting

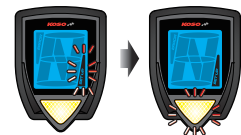
WARNING! To avoid improper gear reading, make sure the motorcycle is on neutral position before entering the gear setting mode.



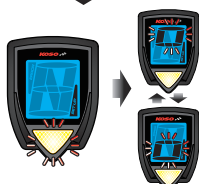
Pre-shift light setting



- Put the meter in pre-shift light setting (see point 4-1).



The shift light will now become amber to indicate you are in the pre-shift light setting.

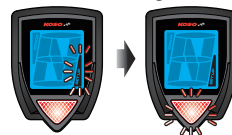


- Once you are in the pre-shift light setting, start the engine and put the motorcycle in neutral position. Increase the RPM of the engine until it reaches half the RPM value you wish to set, then press the button to set the pre-shift light value.
- EX. If you wish to set the pre-shift light at 5000 RPM, rev the engine at half the value (2500 RPM) and push the button to set the value.

Shift light setting



- Press the meter in shift light setting (see point 4-1). The shift light will now become red to indicate you are in the shift light setting.



- Increase the engine RPM until it reaches half the RPM value you wish to set (value should be higher than pre-shift value), then, press the button to set the shift light value.
- EX. If you wish to set the shift light at 8000 RPM, rev the engine at half the value (4000 RPM) and push the button to set the value.