



• Thank you for purchasing the KOSO heated grips. Before installing, read the instructions carefully and retain them for future reference.

## ⚠ ATTENTION!

- For installation, follow the steps on the instruction sheet. Any damage caused by faulty installation shall be imputed to the users.
- Don't break or modify the wires. To avoid a short circuit, do not pull the wires out of the terminals during installing.
- Do not disassemble, alter or change any parts.
- Maintenance or repairs should be executed by our professionals.

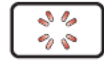
Ⓞ MARK MEANING:

⚠ Some procedures must be followed to avoid damages occurring to the instrument.

⚠ **WARNING!** Some procedures must be followed to avoid injuries to the user or others.

⚠ **CAUTION!** Some procedures must be followed to avoid damages to the vehicle.

🔧 **READ CAREFULLY!** If any information in the manual remains unclear, seek professional assistance.



FLASH



LIGHT ON



PRESS THE  
BUTTON  
ONCE



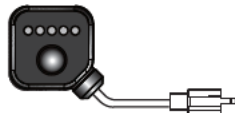
PRESS THE  
BUTTON 3  
SECONDS

## 1 Accessories

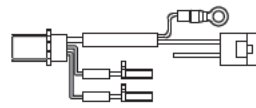
### 1 Heated grip X2



### 2 G type switch X1



### 3 Connecting wire X1



### 4 Hook and loop fastener X1



### 5 Adapter plate for switch X1



### 6 M3XP0.5X25L screw X1



### 7 M3 nut X1



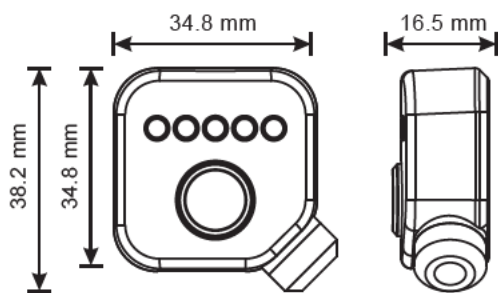
### 8 Bar-end cap X2



### 9 Glue X1



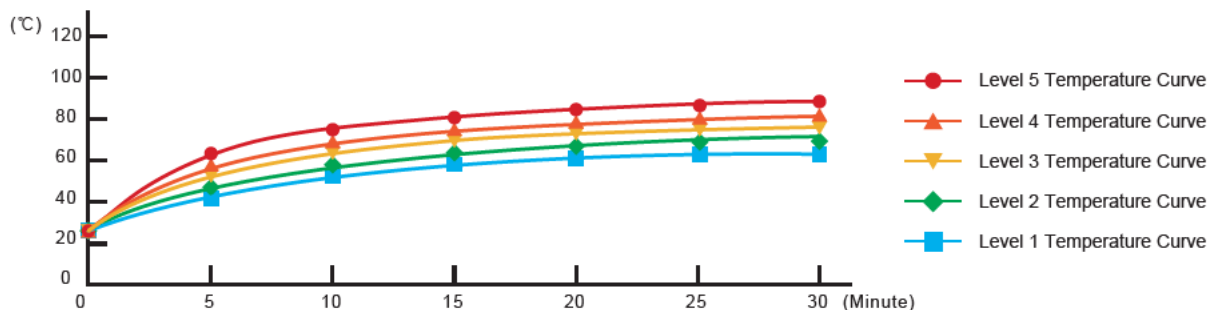
## 2-1 Specifications



● Heating stage	1st stage (low) ~ 5th stage (high)
● Fuse type	4A (ATP)
● Effective temperature range	JIS D 0203
● Voltage	DC 12 V
● Switch size	W38.2 X L38.2 X H16.5 mm
● Switch weight (with wire)	About 88 g

**NOTE** Design and specifications are subject to change without notice!

## 2-2 Heated grip testing data

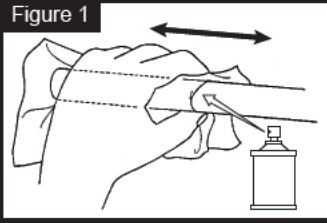


**NOTE** The testing environment is under 26 Degrees Celsius, with working voltage of 13.5 V.

### 3-1 Practical installation instruction

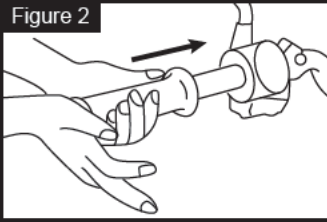
#### Heated grips installation procedure

Figure 1



1. Use an appropriate tool to remove the original handlebar grips.
2. Apply a cleaning agent and wipe back and forth to remove the glue residue from the handlebar.

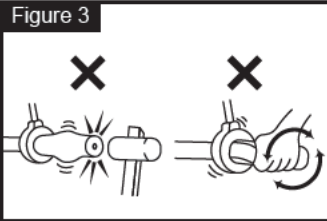
Figure 2



3. Push the heated grip straight onto the handlebar.

**NOTE** If the heating grip and the handlebar are loose; then apply the super glue (Accessory 9) to strengthen the hold to ensure that there will be no twisting during riding.

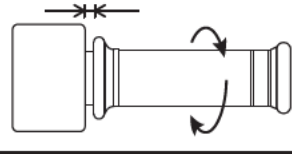
Figure 3



**CAUTION!** To install, do not use any tool to knock the grip on. Do not twist the grip by hand or with a tool. By doing so, this will break or damage the wire inside the handlebar.

Figure 4

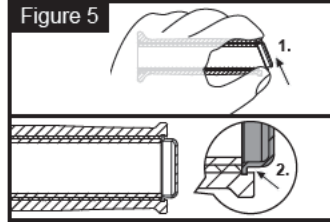
Need to keep a small distance



**CAUTION!**

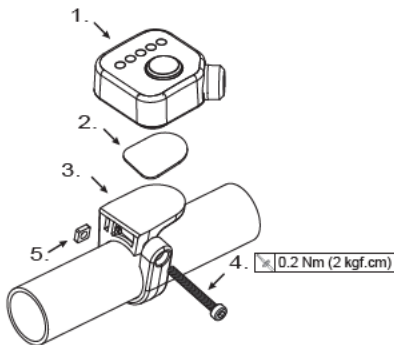
To install the heating grip onto the throttle sleeve, the throttle must maintain a small distance with a surplus distance for wiring; You must test them by rotating back and forth to make sure they can twist.

Figure 5



4. To install the side cap onto the heating grip, insert the top cap into the top groove and then press it downward into the bottom groove.

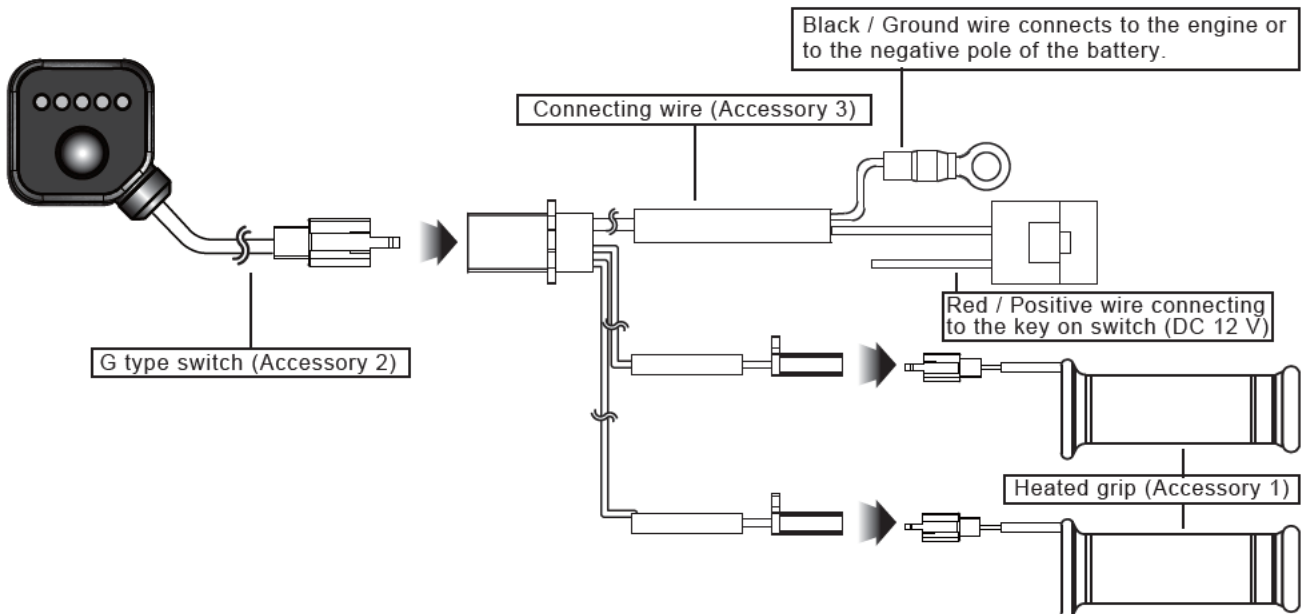
### 3-2 Control box installation instructions




#### Installation steps

1. G switch (Accessory 2)
2. Velcro (Accessory 4)
3. Adapter plate for switch (Accessory 5)
4. M3XP0.5X25L screw (Accessory 6)  $0.2 \text{ Nm (2 kgf.cm)}$
5. M3 nut (Accessory 7)

### 3-3 Wiring installation instructions



## 4-1 Control box instructions




- Turn the key on for stand by mode.

**NOTE** This stage is for a system-check without enabling the heating function.

⚠ At this moment, the LED lights will flash once from left to right.


**A. Heating stage setup**



- Once on standby mode, **press the button** once to activate the heating mode.

**NOTE** The default setting is set to off.

**B. Memory of heating mode**



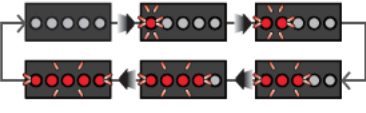
- Press the button to select the desired heat level
- **Example: To select heat level 3, press the button three times.**

**NOTE** The button has an internal memory : 3 seconds after choosing a heat level, that setting will automatically be saved as the default heat level.


- **Ex :** Refer to the image on the top left. The current heating stage is set to the 1st level.

⚠ At this moment, the LED lights will flash once from left to right.

**NOTE** Setting range: Off → 1st stage (low temperature) → 2nd stage → 3rd stage → 4th stage → 5th stage (high temperature)




**C. Quick heating mode**



**C. Quick heating mode**

- While on standby mode, press and **hold the button for 3 seconds** activate the quick heating mode.



- **Quick heating mode.**

⚠ At this moment, LED flashes.

**NOTE** When the temperature is high enough, press the button once to stop the quick heating.

**B. Memory of heating mode**

- Memory of heating mode.
- **Ex :** View the image to the left. In this case, the 3rd heat level will be automatically saved in the memory.

⚠ At this moment, the LED indicators will turn on as a notification.

**C. Memory of heating mode**

- While on standby mode, press and **hold the button for 3 seconds** activate the quick heating mode.

**Quick heating mode.**

⚠ At this moment, LED flashes.

**NOTE** When the temperature is high enough, press the button once to stop the quick heating.

## 4-2 Low-voltage mode Description



- The heating system will turn off automatically when the voltage is lower than 11.5 V.
- ⚠ At this moment, LED flashes.
- Standby mode will be enabled when the voltage reaches above 11.5 V.

## 5 Trouble shooting

The following situation does not necessarily indicate a malfunction. View the following points before taking it in for repairs.

Trouble	Check item	Trouble	Check item
LED indication doesn't light up.	<ul style="list-style-type: none"> <li>● Power supply cable may be disconnected.                             <ul style="list-style-type: none"> <li>→ Check if power supply cable is broken or disconnected.</li> <li>→ Check if positive and negative poles are properly connected.</li> </ul> </li> <li>● It might be caused by an improper set-up.                             <ul style="list-style-type: none"> <li>→ Check if setting is under the idle mode.</li> </ul> </li> </ul>	When turning the key on, the headed grip is not heating up.	<ul style="list-style-type: none"> <li>● The battery may be running out.                             <ul style="list-style-type: none"> <li>→ Check your battery voltage as soon as possible.</li> </ul> </li> <li>● It may be caused by lack of power.                             <ul style="list-style-type: none"> <li>→ Check if power harness and fuse are broken or disconnected.</li> <li>→ Check if positive pole and negative pole are well connected.</li> </ul> </li> <li>● It might be caused by improper installation.                             <ul style="list-style-type: none"> <li>→ Check if all functions are setup properly. Refer to steps 4-1 in the Specification.</li> </ul> </li> </ul>