



# AIRCHARGER<sup>®</sup>

## HIGH-FLOW INTAKE KITS

NOT LEGAL FOR SALE OR USE ON ANY POLLUTION CONTROLLED MOTOR VEHICLE IN CALIFORNIA OR STATES ADOPTING CALIFORNIA EMISSION PROCEDURES.  
See [knfilters.com](http://knfilters.com) for CARB status on each part for a specific vehicle

### INSTALLATION INSTRUCTIONS

## 63-1137

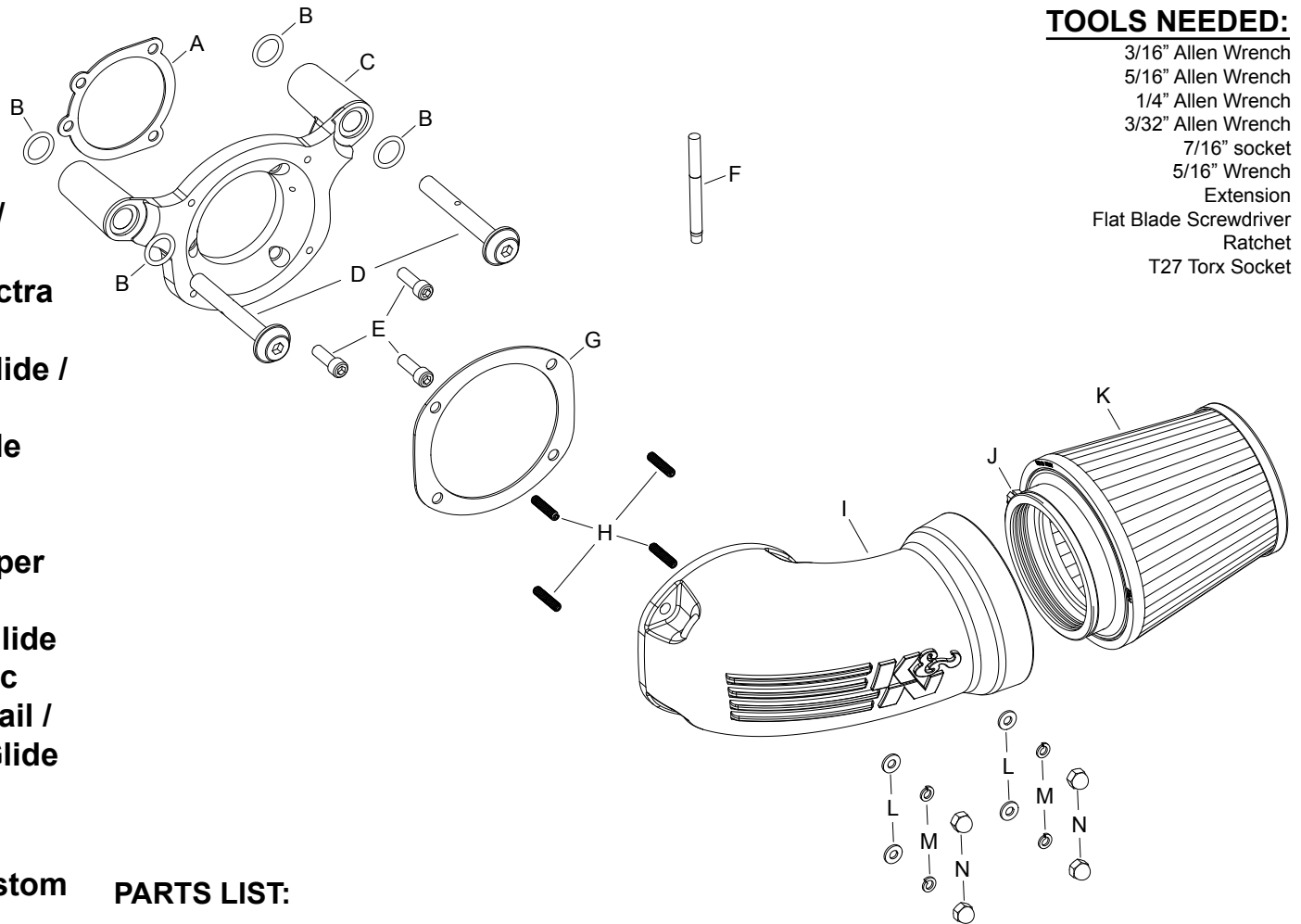
### HARLEY DAVIDSON

2001-03 Heritage Springer  
2001-06 Fat Boy / Night Train / Softail Deuce / Softail Standard / Springer Softail  
2002-06 Road King Classic / Electra Glide Classic / Heritage Softail Classic / Ultra Classic Electra Glide / Road Glide  
2003-06 Road King / Electra Glide Standard  
2004-05 Super Glide Sport  
2004-06 Road King Custom / Super Glide / Low Rider / Wide Glide  
2005-06 Softail Deluxe / Super Glide Custom / Softail Springer Classic  
2006 Street Glide / Heritage Softail / Street Bob / 35th Anniv. Super Glide  
**88CI**

2007 Road King / Road King Custom / Electra Glide Standard / Ultra Classic Electra Glide / Street Glide / Softail Springer / Road Glide / Softail Standard / Softail Deuce / Road King Classic / Electra Glide Classic /  
2007-09 Low Rider  
2007-10 Super Glide / Night Train Softail Custom  
2007-11 Heritage Softail Classic / Fat Boy / Softail Deluxe / Wide Glide  
2007-13 Street Bob / Super Glide Custom  
2008-09 Rocker  
2008-11 Softail Cross Bones / Rocker C / Fat Bob  
2010-11 Softail Fat Boy Lo  
2013 Super Glide Custom  
**96CI**

2011-13 Blackline  
2012-14 Heritage Softail Classic / Fat Boy / Softail Fat Boy Lo / Softail Deluxe  
2012-14 Fat Bob / Wide Glide  
2013-14 Softail Slim  
2013-14 Switchback  
2014 Street Bob / Super Glide Custom  
2014 Breakout  
2014 Low Rider  
**103CI**

NOTE: Excludes Lower Fairings.



#### TOOLS NEEDED:

- 3/16" Allen Wrench
- 5/16" Allen Wrench
- 1/4" Allen Wrench
- 3/32" Allen Wrench
- 7/16" socket
- 5/16" Wrench
- Extension
- Flat Blade Screwdriver
- Ratchet
- T27 Torx Socket

#### PARTS LIST:

Description	Qty.	Part #	Description	Qty.	Part #
A Gasket; Keihin Carb	1	63-1134-4	H 10-32 x 7/8" Cup Point Set Screw	4	22238
B O-Ring; 9/16" ID, .10 Thick	4	07761	I Intake Tube	1	63-1134-1
C Back Plate; Harley	1	63-1137-2	J Hose Clamp #48	1	08601
D Breather Bolt	2	22237	K Air Filter	1	RE-5286
E Screw; 1/4-20 x 3/4" SOC.	3	07731	L Washer; Flat #10 SS	4	08257
F Thread Locker	1	482	M Washer; Lock #10 SS	4	22241
G Gasket; 63-1134	1	63-1134-3	N 10-32 Cap Nut	4	22239

NOTE: FAILURE TO FOLLOW INSTALLATION INSTRUCTIONS AND NOT USING THE PROVIDED HARDWARE MAY DAMAGE THE INTAKE TUBE, THROTTLE BODY AND ENGINE.

#### TO START:

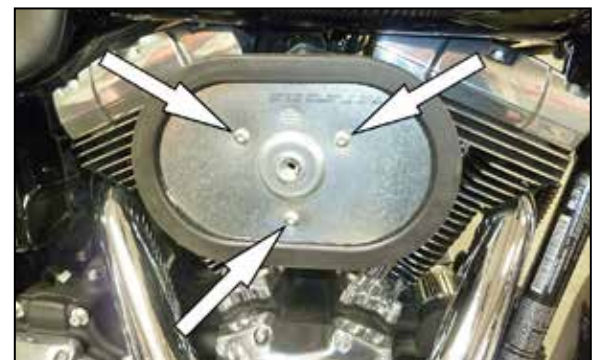
1. Turn off the ignition and disconnect the negative battery cable.



2. Remove the two screws that attach the number plate.



3. Remove the air filter cover retaining bolt and remove the air filter cover.



4. Remove the three air filter retaining bolts shown.



5. Remove the three retaining bolts for the air filter adapter as shown.



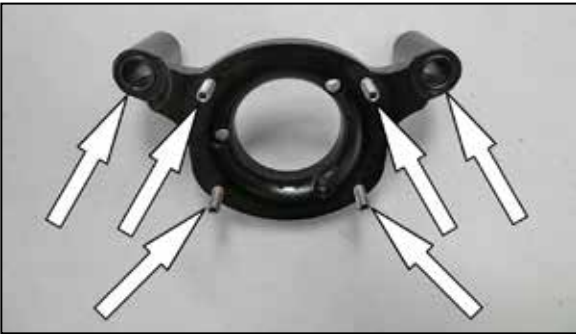
6. Remove the two breather caps and two breather bolts under caps then remove the three base retaining bolts as shown.



7. Remove the air filter breather base as shown.  
**NOTE: K&N Engineering, INC. recommends that customers do not discard the factory air intake components.**



8. Install two of the o rings provided onto the back side of the K&N® back plate as shown.



9. Install the remaining two o rings onto the front of the back plate as shown. Install the four provided studs with thread locker positioned into the back plate.



10. Using the two provided crankcase breather bolts; install the back plate onto the vehicle. Do not tighten bolts at this time. Install the provided gasket between the throttle body and back plate and then secure with provided hardware.  
**NOTE: Apply one drop of the provided thread locker onto the bolts.**



11. Install the K&N® intake tube with the gasket and provided hardware.

**NOTE: Apply one drop of the provided thread locker onto the studs.**



12. Install the K&N® air filter onto the intake tube and secure with the provided hose clamp.

13. Double check to make sure everything is tight and properly positioned before starting the vehicle.

14. It will be necessary for all K&N® high flow intake systems to be checked periodically for realignment, clearance and tightening of all connections. Failure to follow the above instructions or proper maintenance may void warranty.

#### ROAD TESTING:

1. Start the engine with the transmission in neutral or park. Listen for air leaks or odd noises. For air leaks secure hoses and connections. For odd noises, find cause and repair before proceeding. This kit will function identically to the factory system except for being louder and much more responsive.

2. Test drive the vehicle. Listen for odd noises or rattles and fix as necessary.

3. If road test is fine, you can now enjoy the added power and performance from your kit.

4. K&N Engineering, Inc., suggests checking the air filter element periodically for excessive dirt build-up. When the element becomes covered in dirt (or once a year), service it according to the instructions on the Recharger® service kit, part number 99-5050 or 99-5000.

**NOT LEGAL FOR SALE OR USE ON ANY POLLUTION CONTROLLED MOTOR VEHICLE IN CALIFORNIA OR STATES ADOPTING CALIFORNIA EMISSION PROCEDURES.**

See [knfilters.com](http://knfilters.com) for CARB status on each part for a specific vehicle