



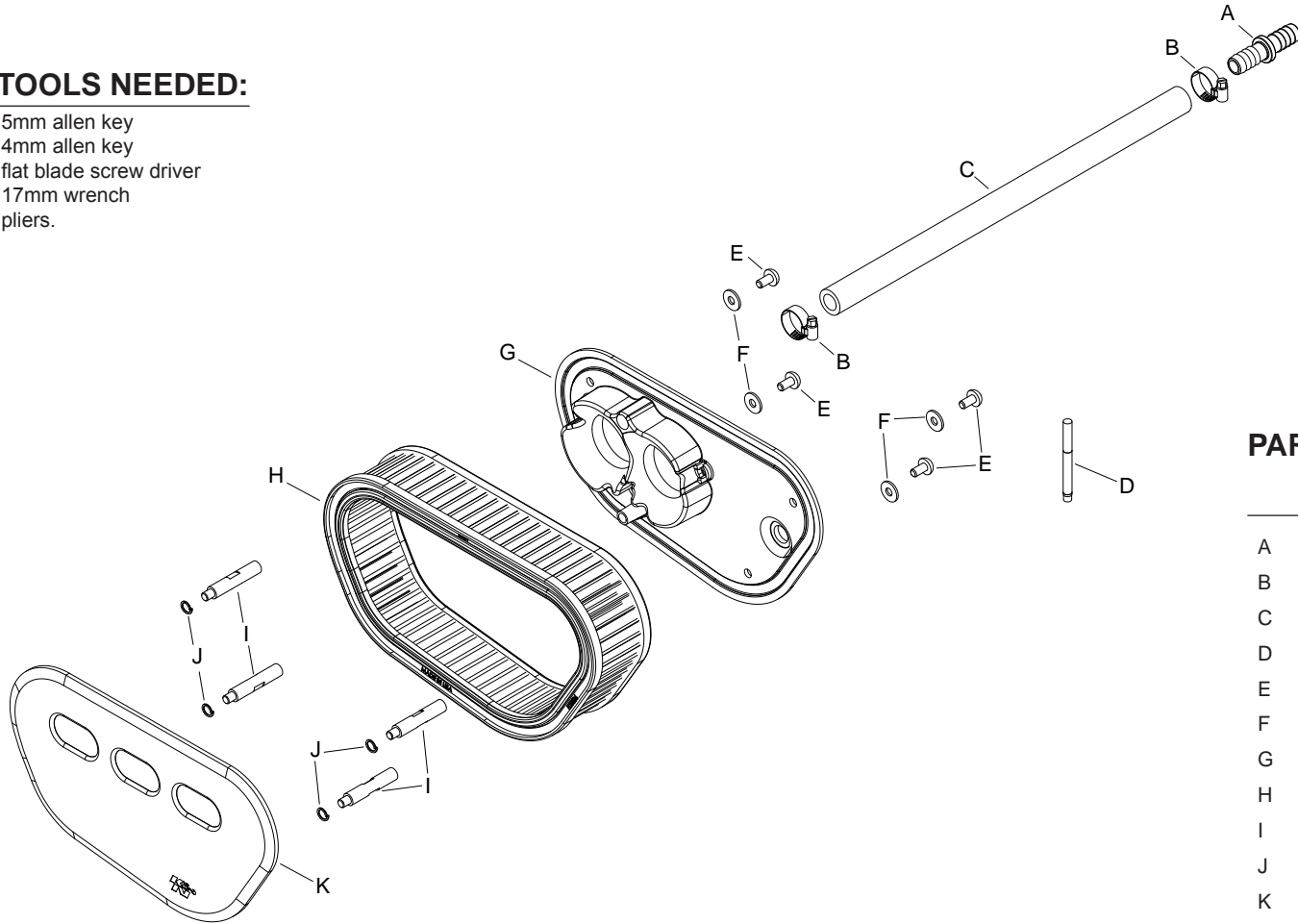
# INSTALLATION INSTRUCTIONS

## PART NUMBER: RK-3940

Congratulations, you have purchased the finest custom air cleaner that money can buy. With proper care, this filter will last 1 million miles or more. This custom air cleaner replaces the stock air cleaner assembly. The following procedure **MUST** be followed to ensure a proper fit and seal of the custom air cleaner.

### TOOLS NEEDED:

5mm allen key  
4mm allen key  
flat blade screw driver  
17mm wrench  
pliers.



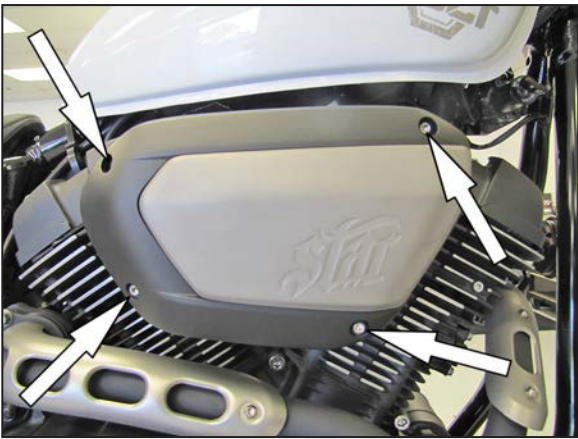
### PARTS LIST:

Description	Qty.	Part #
A Hose Mender; 1/2" Barbed, Nylon	1	08686
B Hose Clamp #6 Mini	2	08407
C Hose; 1/2" ID X 14"L	1	08402
D 2ML, Medium Strength, Blue	1	482
E Bolt; M6 X 1.00" 12MM, SS	4	07794
F Washer; 6MM Flat, SS	4	08269
G Back Plate	1	01912
H <a href="#">Air filter</a>	1	E-3982
I Spacer; 3/8" OD X 1.86"L	4	06405
J Washer; 1/4" Lock, ZN	4	08198
K Front Plate	1	01913

**NOTE: FAILURE TO FOLLOW INSTALLATION INSTRUCTIONS AND NOT USING THE PROVIDED HARDWARE MAY DAMAGE THE THROTTLE BODY AND ENGINE.**

### TO START:

1. Turn off the ignition and disconnect the negative battery cable.



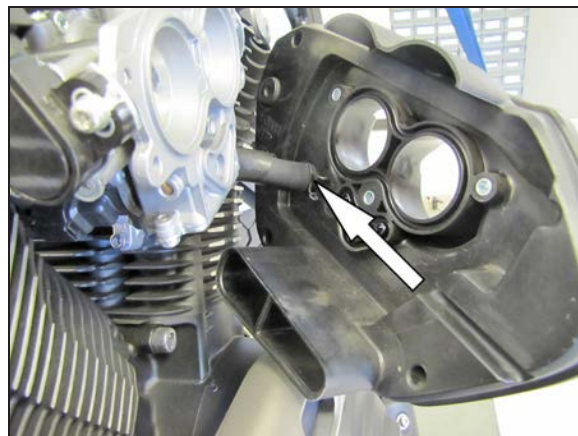
2. Remove the four bolts that secure the cover and filter to the base and then remove the cover and filter from the vehicle.

**NOTE: K&N Engineering, Inc. recommends that customers do not discard the factory air intake components.**



3. Remove the three Throttle body bolts and the mounting bolt shown.

**NOTE: All of the factory mounting bolts will be reused.**



4. Pull the filter base away from the throttle body then release the spring clamp securing the crank case vent hose and disconnect the crank case vent hose from the back plate.



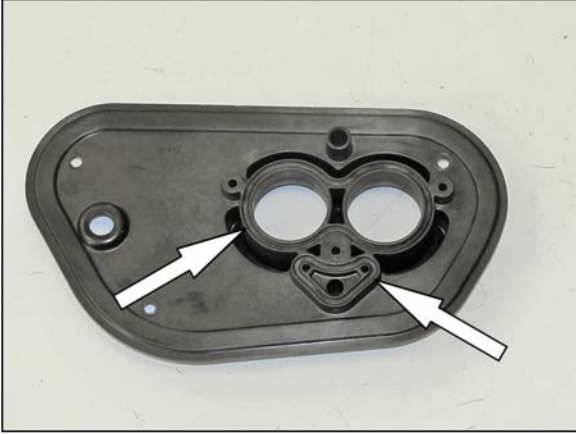
5. From the left side of the vehicle, pull the crank case vent hose out for later access.



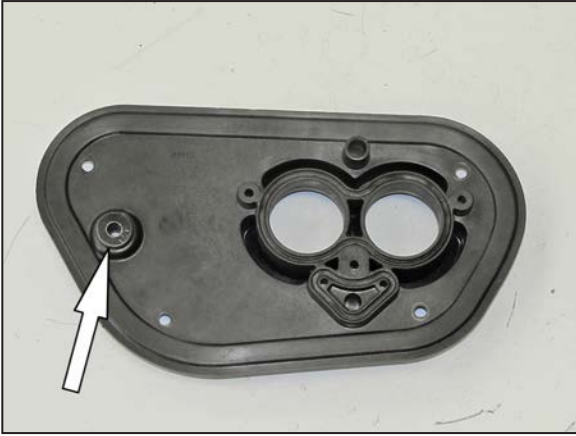
6. With a small screw driver or pick, carefully remove the factory gaskets from the filter back plate.



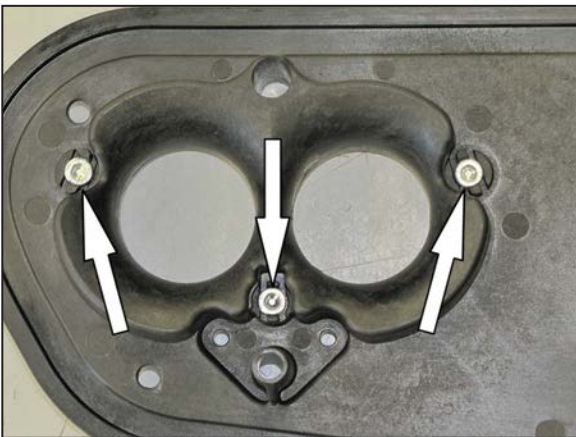
7. Remove the reinforcement and mounting grommet from the back plate as shown.



8. Install the factory gaskets into the provided K&N® back plate as shown.



9. Install the factory grommet and reinforcement into the K&N® back plate as shown.  
**NOTE: The reinforcement is to be installed from the back side of the grommet so that when it is installed onto the vehicle it is against the factory mounting bracket.**



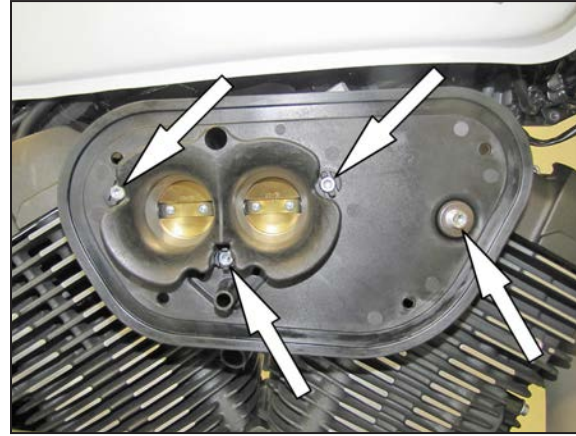
10. Install the factory throttle body bolts into the K&N® back plate as shown.  
**NOTE: Be sure the bolt heads "SNAP" past the retaining clips when installing them into the back plate.**



11. Route the provided crank case vent hose on top of the throttle body as shown so that it comes out of the left side of the engine.  
**NOTE: Be sure that the hose does not interfere with, and route away from any linkages or moving parts.**



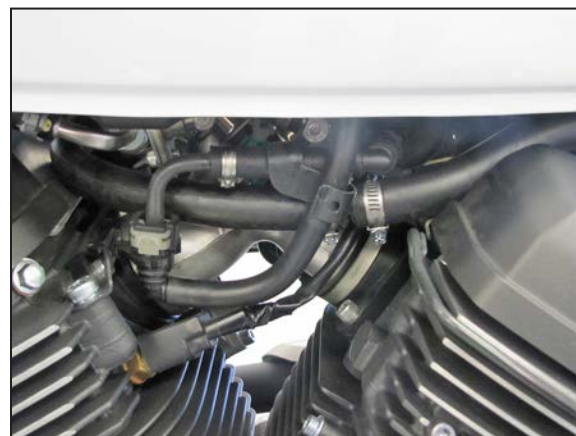
12. Attach the crank case vent hose to the K&N® pack plate.



13. Install the K&N® back plate onto the throttle body and secure with the factory hardware.



14. Cut the factory crank case vent hose in the area indicated by the line.



15. Trim the provided crank case vent hose for best fit, then using the provided hose mender and clamps, connect the crank case vent hoses together.



16. Install the four stand-offs and lock washers onto the front plate as shown.



17. Install the K&N® air filter onto the front plate as shown.



18. Install the front plate and filter assembly onto the back plate and secure to it to the back plate with the provided hardware.

**NOTE: Be sure the filter seats into the front and back plate correctly as the assembly is tightened.**



19. Reconnect the vehicle's negative battery cable. Double check to make sure everything is tight and properly positioned before starting the vehicle.

20. It will be necessary for all K&N® custom air cleaners to be checked periodically for realignment, clearance and tightening of all connections. Failure to follow the above instructions or proper maintenance may void warranty.

#### ROAD TESTING:

1. Start the engine with the transmission in neutral. Listen for air leaks or odd noises. For air leaks secure hoses and connections. For odd noises, find cause and repair before proceeding. This kit will function identically to the factory system except for being louder and much more responsive.

2. Test ride the vehicle. Listen for odd noises or rattles and fix as necessary.

3. If road test is fine, you can now enjoy the added power and performance from your kit.

4. K&N Engineering, Inc., requires cleaning the intake system's air filter element every 50,000 miles. When used in dusty or off-road environments, our filters will require cleaning more often. We recommend that you visually inspect your filter once every 25,000 miles to determine if the screen is still visible. When the screen is no longer visible some place on the filter element, it is time to clean it. To clean and re-oil, purchase our filter Recharger® service kit, part number 99-5050 or 99-5000 and follow the easy instructions.