



# INSTALLATION INSTRUCTIONS

Part Number HA-4502

Congratulations, you have purchased the finest [air filter](#) that money can buy. With proper care, this filter can last many seasons. This filter can be used in a stock machine, with no modifications required. If any engine modifications have been made tuning/jetting adjustments may be required. There are special installation instructions, so please follow the procedures outlined below to ensure the K&N Filtercharger® seals properly.

## INSTALLATION

1. Remove the stock air filter.  
**Note:** The stock air filter holder and screen will not be used with the K&N Filtercharger®.
2. Clean the air filter sealing surface in the air box.
3. Apply the provided gasket into the air box. (Fig. 1)  
**Note:** The gasket will only fit in the air box one way.
4. Apply the provided K&N Sealing Grease into the grooves on the top of the K&N Filtercharger®. (Fig. 2)
5. Apply K&N Sealing Grease to the stepped end of the provided spacer. (Fig. 3)
6. Install the stepped end of the spacer into the K&N XStream Top Filter. (Fig. 4)
7. Install the provided washers onto the provided wing bolt. Note the order of the washers. (Fig. 5)
8. Install the K&N XStream Top Filter, spacer and wing bolt onto the K&N Filtercharger®. (Fig. 6 and 7)
9. Install the K&N Filtercharger® into the air box. (Fig. 8)  
**Note:** The indentations on the base of the K&N Filtercharger® line up with the nipples in the air box.
10. Tighten the wing bolt.  
**Note:** Do not over tighten the wing bolt or damage can occur to the K&N XStream Top Filter.

**THESE INSTRUCTIONS MUST BE FOLLOWED EVERY TIME THE FILTER IS SERVICED, OTHERWISE THE FILTER MAY NOT SEAL, AND DAMAGE TO THE ENGINE COULD RESULT.**

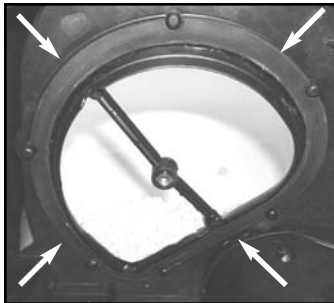


Fig. 1



Fig. 2

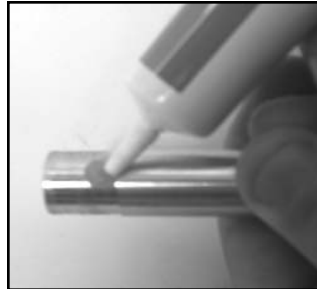


Fig. 3

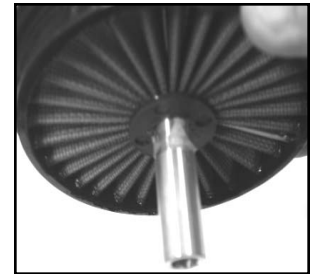


Fig. 4

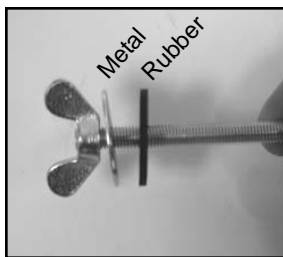


Fig. 5

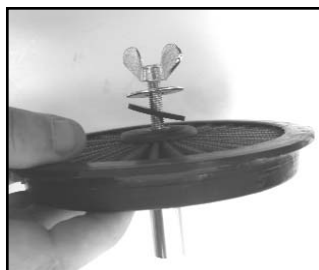


Fig. 6



Fig. 7

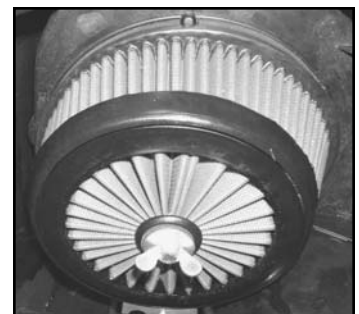


Fig. 8