

KICKER® 46HDR154

Motorcycle Audio Kit Installation Guide for Harley Davidson® Road Glide (FLTR) 2015–Newer

Package Contents:

(1) Install Guide	(1) Wiring Harness	(4) Black Cable Ties
(2) 6-1/2" KICKER Speakers	(2) 8-32 x 1/2" Button Head Bolts	(1) Amplifier Mounting Bracket
(1) 75W x 4 KICKER Amp	(2) 8-32 Nylock Nuts	(1) Dummy Load Plug

*Important: Over-tightening mounting fasteners may result in damage to your motorcycle. Please refer to your service manual for proper procedures and torque specifications. KICKER is not responsible for damage resulting from improper installation techniques. This kit **may not** be compatible with some aftermarket head units.*

PROGRAMMING HD RADIO

NOTE: It is necessary to re-flash your HD radio before installation of this kit. If you do not have the Techno Research Centurion program software you may purchase a Kicker TRHDP Radio Flash Programmer.

FRONT KIT PROGRAMMING WITH KICKER TRHDP

Follow instructions included with KICKER TRHDP

FRONT & REAR PROGRAMMING WITH KICKER TRHDP

Follow instructions included with KICKER TRHDP

GETTING STARTED

1. Remove the seat and disconnect both positive and negative battery terminals.
2. Remove the windshield and outer fairing.
 - a. Once the windshield screws are removed, gently pull off the top vent/cowl piece. There are two plastic retainer clips that hold it on.
 - b. Remove your stock speaker grilles. Push them out from the inside of the fairing. They are fastened with a plastic retainer clip. **Fig 1.**
 - c. Unplug the turn signals. **Fig 2.**
 - d. Remove the lower T25 fasteners holding the air deflectors to the inner fairing. **Fig 3.**
 - e. Remove the 3/16" allen bolts holding the turn signals to the inner fairing. **Fig 4.**
 - f. While holding the fairing, carefully remove the two T30 bolts behind the speaker grilles to remove the outer fairing and set aside. **Fig 5.**
3. Remove the fuel tank.
 - a. Remove the console.
 - b. Unplug the fuel fitting on the left side of the tank.
 - c. Remove all four mounting bolts and carefully lift the tank off the bike and set aside.
4. Remove wiring caddy cover.
 - a. Carefully release each tab along the caddy until it lifts completely. **Fig 6.**

SPEAKER INSTALLATION

5. Remove your stock speakers and replace them with your new PSC652 speakers in the kit.
 - a. Install the provided speaker ring adapter onto the speaker pod. **Fig 7.**
 - b. Install the speaker into the pod and fasten with the original speaker screws. **Fig 8.**

AMP INSTALLATION

6. Remove the radio.
 - a. Unplug the four connectors on the back of the radio.
 - b. Remove the four allen head bolts holding the radio to the chassis.
 - c. Gently remove the radio from the chassis.
7. Install the PXA300.4 amplifier onto bracket with supplied hardware. **Fig 9.**
 - a. Slide the end of the amplifier with the power connector port into the bracket and fasten with supplied hardware.
 - b. Install the bolts from the bottom and fasten the locknuts onto the amplifier.
8. Carefully install bracket/amplifier assembly onto radio chassis by installing the assembly through the radio face port in the fairing and sliding the tabs of the bracket over the chassis. **Fig 10.**
 - a. The amp bracket assembly mounts under the radio.

HARNESS INSTALLATION

9. Plug the harness into the amplifier and route speaker wires to their respective connectors. **Fig 11.**
 - a. Separate the speaker connectors and plug in the amplifier harness to each speaker.

10. Plug the switched power harness into the 2-pin amp connector on the throttle side. **Fig 12.**
11. Plug the blue wire on the kicker harness into the switched power harness lead with one wire.
 - a. This allows for an accessory 12V port to remain available.
12. Route both power leads along the clutch side of the neck and through the electrical caddy to the seat area.
13. Reconnect the battery terminals.

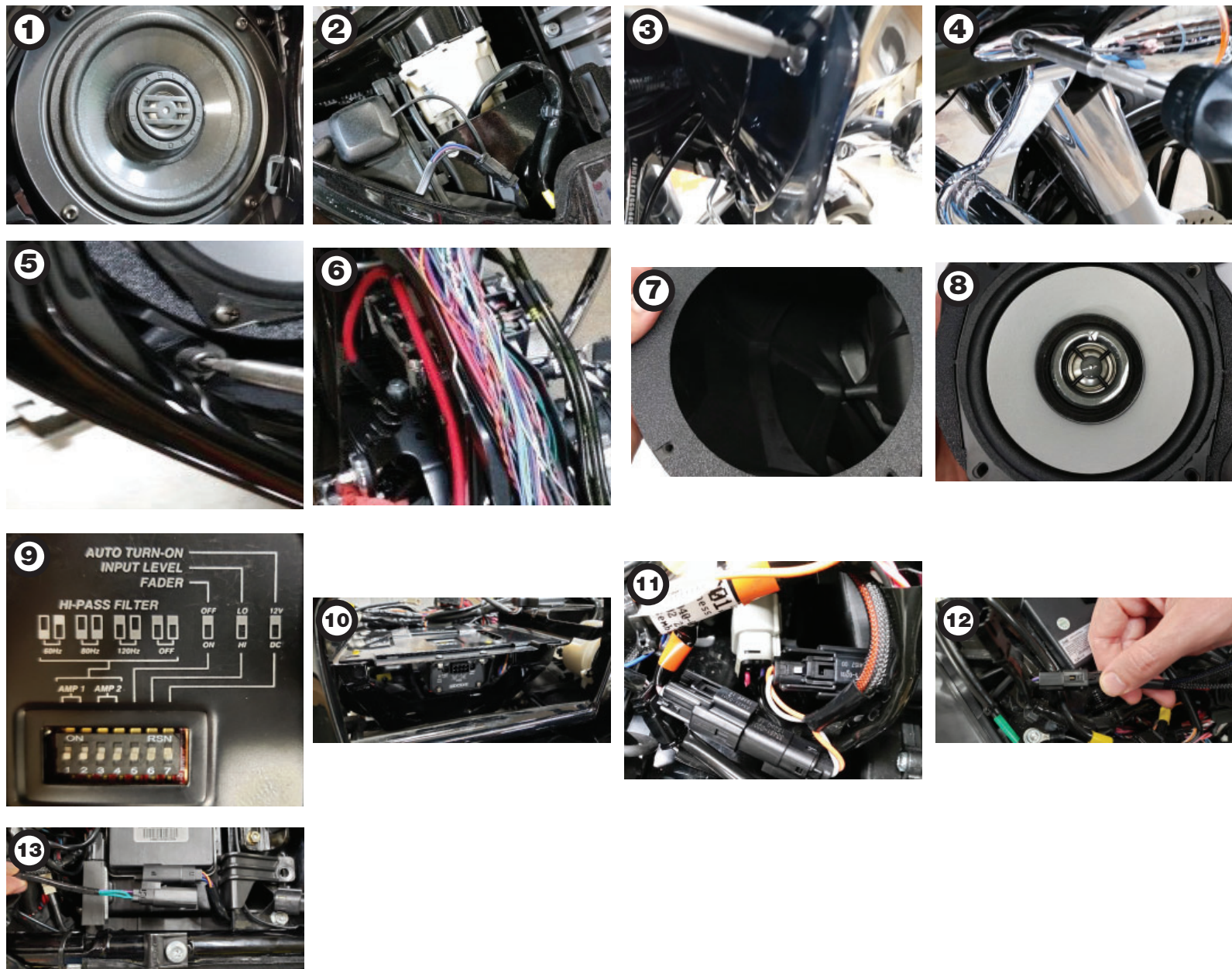
NOTE: If you are not running rear speaker lids or tour pack, please plug in the Dummy Load Plug into the amplified rear speaker output at the end of the harness. **(Fig.13)**

SYSTEM SETUP - Fig 9.

Note: At this time, it is highly recommended to **set the amp gain to 0**. KICKER recommends that the **dip switches** be set up as follows:

- | | | | |
|-----------------------------|---------------------------|--|-------------------------|
| Auto turn-on – 12V ↑ | Input level – HI ↓ | HI-PASS – Amp 1: 80 Hz (For Front) ↓↓ | Input Gain controls – 0 |
| Fader – On ↓ | | Amp 2: 60Hz (6 x 9) ↑↓ | |
| | | 80Hz (6.5" Tour Pack) ↓↓ | |

14. Plug the radio in, but do not reinstall it until the gain has been set.
15. Test component function and set the gain to optimize system performance.
16. Carefully reassemble the motorcycle and enjoy your new audio system!



KICKER cannot be held responsible for any damage to painted surfaces during removal or addition of KICKER parts.