

JUST1
HELMETS®

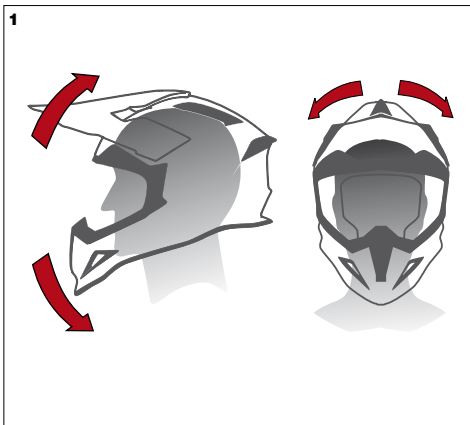
USER'S INSTRUCTIONS

100%
MADE IN ITALY



GENERAL RULES

For maximum safety **JUST 1 Helmets** must fit tightly and be correctly and securely fastened, so it cannot be taken off neither by pulling it nor by rotating it around the head (see figure 1).
If it is too big it may slide down over the eyes or turn in a lateral direction due to movement during riding, thus blocking visibility.



Do not use scarves or neck guards which could make the strap slide and the helmet fly off in case of crash. The function of the helmet is to reduce stress on the user's head in case of crash, this happens through a partial destruction and/or deformation of its components (mostly the external shell and the internal polystyrene shell). In this way, part of the energy generated by the impact is absorbed by the components of the helmet, thus reducing the vibrations on the user's head, eliminating or limiting the risk of traumas. The protection capacity of the helmet is not endless and certain crashes may generate such high stress that even the energy absorbed by the helmet is not enough to protect the user from injuries:

No helmet, even top quality Helmets, can protect the head against the forces generated by any type of crash.

The integrity of the outside fibers shell and of the inside polystyrene shell is essential to assure maximum performances in terms of safety.

JUST 1 Helmets was designed to absorb crashes through a partial destruction of the shell or some of its parts that could be damaged after a crash even if it is not readily visibly. If the helmet suffers further stress it might not be able to offer the maximum level of protection.

Do not use a helmet that suffered severe blows even though the damage is not readily visible; if the helmet is damaged it must be replaced.

It is extremely dangerous to modify the helmet by sticking or gluing anything on it.

Do not cut or punch the helmet's shell, do not insert screws or paint it.

Do not change the internal lining of the helmet, particularly never cut or change the inside polystyrene padding: **changes to the shape of the internal polystyrene shell can affect the safety features of the helmet.**

Only use original **JUST 1 Helmets** accessories and spare parts or those specifically indicated by JUST ONE s.r.l. for the specific model: this is the only way to assure reliability, safety and compatibility with the helmet used.

The use of non original components and/or accessories makes the warranty void (see warranty conditions on page 30) and can affect the safety requirements.

MAINTENANCE

To **clean the shell and front part** use water and mild soap; let the helmet dry at room temperature, never expose it to heat.

Cleaning the helmet with solvents, petrol by-products or chemical substances, the application of stickers or paint could affect the structure of the shell, thus affecting the safety features, even if the damage is not readily visible.

Do not paint, or apply stickers, petrol or other chemical solvents to this helmet.

To **clean the internal lining**, just hand wash at 30°C maximum, exclusively using mild soap.

To clean the removable internal lining use a damp cloth and mild soap.

The fabric lining, even if it is part of removable elements, must not be soaked in water when it is applied to or paired with an internal padding, either rigid or soft.

Dry the pieces at room temperature, away from sunlight and **without exposing them to heat.**

Periodically clean the «**D-Ring**» **retention system** with warm water and mild soap. **Do not use solvents or chemical detergents and do not lubricate.**

Some colorings of the **shell** are made with Fluo paints that could be subject to the natural migration phenomenon with a drop in intensity. The phenomenon could be enhanced when the helmet is exposed for long periods to a particularly intense light. However, this does not affect the performances and the quality of **JUST 1 Helmets**.

JUST ONE s.r.l. therefore, cannot be held responsible if this should occur.

RETENTION SYSTEM «D-RING»

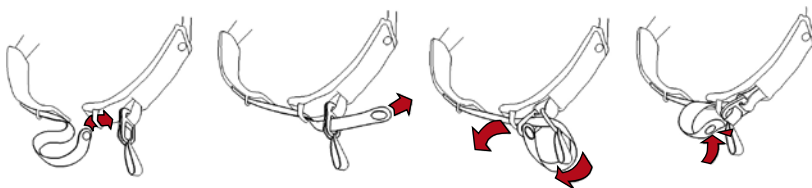
see figure 2

Insert the free side of the strap in the rings. Pull the end until the strap presses firmly against the jaw.

After this operation, it should not be possible to remove the helmet. Verify that by grabbing it from the back and rotating it to the front it cannot be removed and it is fixed to the head.

If the helmet tends to come off or rotates freely, tighten the strap again until the right pressure is obtained and repeat test.

2



USER'S INSTRUCTIONS

If after repeating the test you are not able to efficiently tighten the retention system, do not use the helmet.

Only after checking the correct tension of the strap, fix the free end locking it with the automatic stud to the release tab (see fig. 2).

The automatic stud is necessary only to fix the free end of the strap to prevent it from flapping while riding. Fixing the release button does not assure that the helmet is correctly in position and properly fastened: the correct locking of the strap must be verified exclusively following the above paragraphs.

To release the retention system, release the automatic stud button and pull the release tab to loosen the closure. Slide out the free end of the strap from the “D-Rings”.

Use the release tab only to remove the helmet! Never release this tab while riding.

If the retention system does not work properly, do not use the helmet and contact JUST 1 Helmets authorized personnel only.

The part in fabric is attached with Velcro and can be washed and replaced.

To remove it, release the Velcro and slid it out from the free side.

To fasten again, slide back in the fabric from the free side and fix the fabric to the Velcro again.

PEAK : ADJUSTING

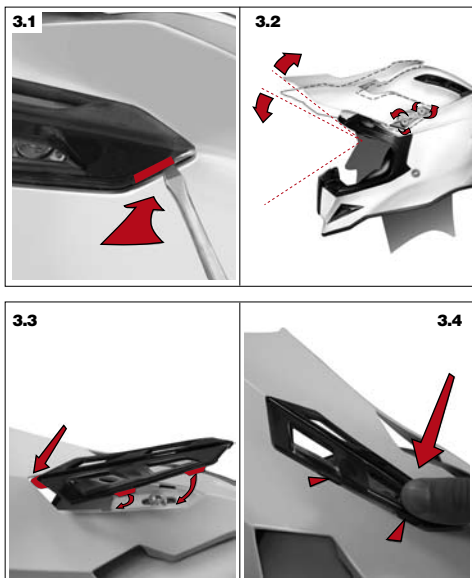
see fig. 3.1 - 3.2 - 3.3 - 3.4

Remove the cover on the peak by a slight pressure by inserting a small screwdriver into the slots at the rear of the cover (see fig. 3.1).

Loosen without removing the two screws on the right and two on the left and that one on the central part (see fig.3.2). Adjust the position of the front part rotating it upwards or downwards until the desired position is obtained. After finding the position, tighten the three screws and re-check the position of the front part.

Put the lid back on the peak from the front and then apply pressure to the rear until it locks into place (see Fig. 3.3 – 3.4).

For all these operation, use the proper tool to tighten these screws.



USER'S INSTRUCTIONS

PEAK : REPLACING

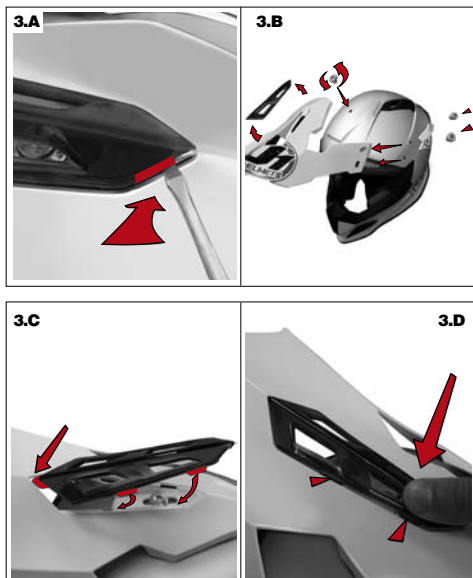
see fig. 3.A - 3.B - 3.C - 3.D

Remove the cover on the peak by a slight pressure by inserting a small screwdriver into the slots at the rear of the cover (see fig. 3.A).

Loosen and remove the two screws placed on the right and two on the left and one on the central part (see fig. 3.B). Position the new front part by making the holes match with the five threaded fittings on the shell. Insert the screws in the specific housings without tightening completely. Adjust the position of the front part and lock it into position as indicated in above paragraph.

Put the lid back on the peak from the front and then apply pressure to the rear until it locks into place (see Fig. 3.C – 3.D).

For all these operation, use the proper tool to tighten these screws.



INTERNAL PARTS

The internal parts of “**JUST 1 Helmets**” (central pads, right and left cheek pads), can easily be removed to be washed and/or replaced.

Inner side padding:

CHEEK PADS (Assembly and disassembly)

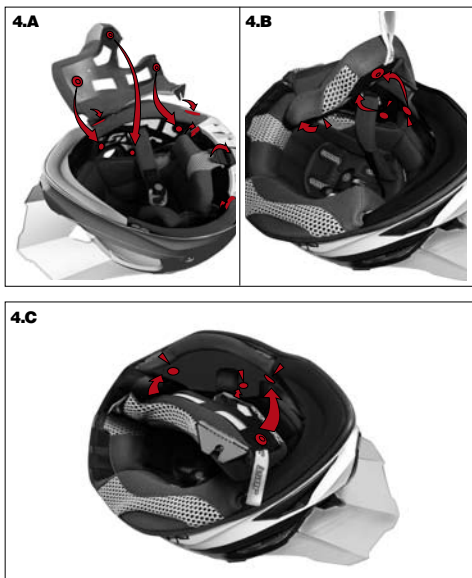
The cheek pads are fixed to the inner lining of the helmet through three press studs and two tabs.

REMOVING see fig. 4A

The removable cheek pad is fixed to the shell through three press studs and two tabs to remove, unfasten the three studs and tabs by slightly pulling outwards. After unfastening the buttons and tabs, slide out the pad (see fig. 4.B).

ASSEMBLY see fig. 4C

Follow this procedure to fit in the cheek pads :
Verify the correct positioning of the removable cheek pads and slightly press and fasten the studs and push



USER'S INSTRUCTIONS

the two tabs.

Verify that the part was assembled correctly by checking that:

- the cheek pad is firmly locked in position;
- that the strap was not blocked under the cheek pad during assembly.

Only the correct assembly of the cheek pad and the correct positioning of the strap will assure the proper operation of the retention system.

If this doesn't happen and the removable cheek pads don't work correctly, do not use the helmet and contact **JUST 1 Helmets** authorized personnel only.

EMERGENCY REMOVE see fig. 4.D - 4.E

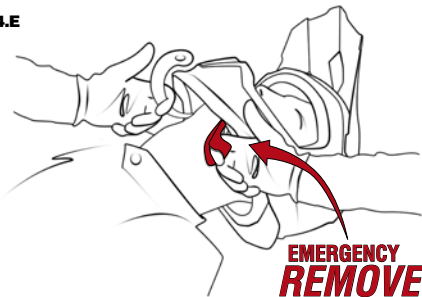
JUST 1 Helmets are fitted with the safety device "J.1.E.R." **JUST 1 Emergency Remove** (see fig. 4.D) to remove, in case of need, the cheek pads before removing the helmet from the head of the rider injured.

Put the index into the white tape and pull until the cheek pads comes out (see fig. 4.E).

4.D



4.E



INTERNAL CENTRAL PADDING: (fitting and removal)

REMOVAL see fig. 5A

The internal padding is fixed to the helmet through 3 tongues on the back and a crown with some bottom and some little tongues on the front that fix the internal padding to the polystyrene. Remove the removable cheek pads (refer to paragraph CHEEK PADS). Release the back stud buttons and release in the front part of the polystyrene, the click-in tongue from its seats. Slide out the two side tongues that fix the internal padding to the polystyrene. Remove the internal padding.

Caution: to avoid damaging the internal lining, before removing the padding, make sure the tow back stud buttons were released.

FITTING see fig. 5.B - 5C

Position the internal padding of the helmet checking the direction of assembly. Fix the front tongue to its support on the polystyrene, fasten the back stud buttons and reinsert the side tongues between the shell and the polystyrene.

After fitting the parts, make sure the internal padding was positioned correctly.

If these conditions are not verified and the internal padding was not fitted correctly, do not use the helmet and contact authorized JUST 1 Helmets personnel only.

Put the cheek pads back into position (refer to paragraph CHEEK PADS).

