



INSTRUCTION SHEET FOR TOOL #973

TIMKEN BEARING OR ROLLER BEARING INNER RACE INSTALLER ADAPTER KIT

USED TO INSTALL H.D.# 8028 TIMKEN BEARING, FIG 3 OR H.D.# 24004-03 ROLLER BEARING
INNER RACE ONTO THE SPROCKET SHAFT. FIG 2

USE ON BIG TWIN 2006 TO PRESENT FXD'S AND 2007 TO PRESENT FL'S & FXST'S ALSO FOR
USE ON JIMS 120" MOTORS.

NOTE: Must be used in conjunction with JIMS® tool #97225-55

NOTE: Do not use impact tools on any flywheel assembly tool. Damage will occur to flywheels, bearings, case, and tools.

Read complete instruction before starting this service. If you are not sure about this service then take to a professional repair shop. Refer to your H.D. service book, per application you are servicing for correct preparation to remove existing bearing or inner race.

1. Clean and inspect flywheel sprocket shaft for burrs or excessive wear. Replace if beyond wear limits.
2. Preassemble your Jims #97225-55 tool as shown in **Fig 1** using items #1 thru #7 and lightly lube all threads. Then thread adapter, item #2 into lubed threaded end of item #3 with a light torque.
3. Lube sprocket shaft with a quality press fit lube. Position H.D.#9028 Timken bearing with part numbers facing toward the flywheel on sprocket shaft. If you are installing a new Roller Bearing Assy. H.D.#24004-03 then place one of the 2 thrust washers onto the shaft with tapered I.D. facing flywheel and marked out facing you. Then you will need a heat gun and protective gloves to heat up the roller bearing inner race to no more than 210°. Then put the heated race in position on the non – flammable lubed sprocket shaft. Before race cools promptly use tool as follows.
4. Place the slider tube item #1 and Item #7 over sprocket shaft with lower edge of slider tube sitting against either the Timken bearing or the heated bearing inner race.
5. Thread the preassembled tool with a light torque into the lubed hole on the end of the sprocket shaft. It should look like **Fig 2** or **Fig 3** at this stage.
6. Turn clockwise the tool nut item #5 with a 1-7/8" wrench until either Timken bearing or the Inner bearing race bottoms out on base of the flywheel.



**RACE
FIGURE 2**



**TIMKEN
FIGURE 3**

PARTS AVAILABLE SEPERATELY FOR TOOL No. 973

Item No.	Qty.	Discription	Part No.
1	1	Slider	973-2
2	1	Adapter	973-1

PARTS AVAILABLE SEPERATELY FOR TOOL No. 97225-55

Item No.	Qty.	Discription	Part No.
3	1	Mainbody	97225-55-1
4	1	Nut	1026B
5	1	Bearing & washers	2001/2002
6	1	Long handle	1028
7	1	Slider	97225-55-3

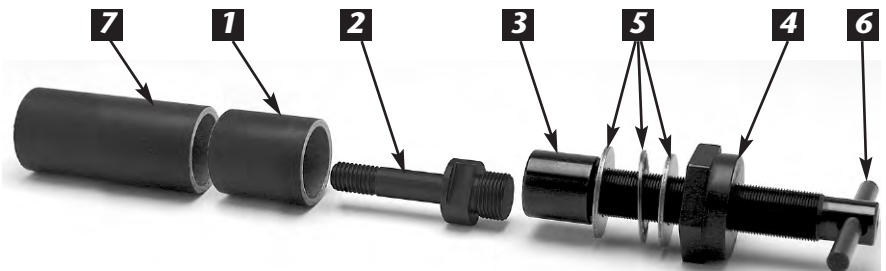


FIGURE 1

**CAUTION: WEAR SAFETY GLASSES. EXCESSIVE FORCE MAY DAMAGE PARTS!
SEE JIMS® CATALOG FOR HUNDREDS OF TOP QUALITY PROFESSIONAL TOOLS.
THE LAST TOOLS YOU WILL EVER NEED TO BUY.**

Performance Parts For Harley-Davidson® Motorcycles

Looking for dependable motorcycle tools? Visit our website.