



## INSTRUCTION SHEET FOR TOOL #38515-91

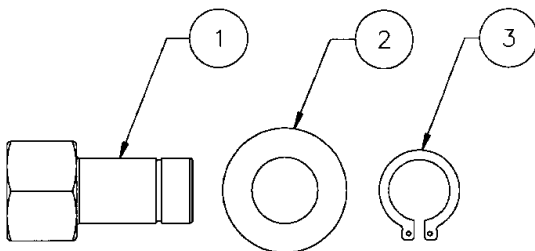
**CLUTCH DIAPHRAGM SPRING COMPRESSING TOOL  
MUST BE USED WITH TOOL No.38515-90, MAIN BODY.  
USE ON 1991-PRESENT SPORTSTER AND 1991-2010 BUELL**



**Warning:** Disconnect negative battery cable to avoid accidental start ups.



1. Refer to H-D® Service Manual for removal of primary cover.
2. Loosen jam nut and remove by twisting adjuster screw with flat blade screwdriver.
3. Install washer No.2038 onto nut No.38515-91-1 and insert through center hole of main body No.38515-90. Install retaining ring No.2039 onto nut to capture nut assembly onto the main body.
4. Hold cup portion of tool #38515-90-1 up against clutch diaphragm.
5. Note: Apply oil to all threads, and pushing surfaces, thread tool #38515-91-1 onto adjusting screw.
6. While holding adjuster screw with a flat blade screwdriver, tighten nut No.38515-91-1 using a 3/4" wrench.
7. Compress the diaphragm spring inward just enough to remove retaining ring.
8. Remove retaining ring No.37908-90 from clutch.
9. Slowly remove tool with pressure plate attached. **CAUTION:** Do not loosen spring compressing tool if you are not replacing the pressure plate.
10. Clutch can now be disassembled.



### PARTS AVAILABLE SEPARATELY

No.	Qty.	Description	Part No.
1	1	NUT	38515-91-1
2	1	WASHER	2038
3	1	RETAINING RING	2039

**CAUTION: WEAR SAFETY GLASSES. EXCESSIVE FORCE MAY DAMAGE PARTS!  
SEE JIMS® CATALOG FOR HUNDREDS OF TOP QUALITY PROFESSIONAL TOOLS.  
THE LAST TOOLS YOU WILL EVER NEED TO BUY.**

*Performance Parts For Harley-Davidson® Motorcycles*

When it comes to quality motorcycle tools, JIMS is the brand you can depend on.