



A Division of Thiessen Products, Inc.

INSTRUCTION SHEET FOR #2243

CAM SEAL REMOVER & INSTALLER

USE ON BIG TWIN 1970-1999 INCLUDING AFTERMARKET SINGLE CAM



TO REMOVE SEAL

1. Refer to H-D® Service Manual to remove sensor plate and rotor.
2. To remove old seal, install tool to inside of cam cover using (2) 8-32 No. 2297 screws, using a 9/64 Allen wrench. (see diagram) Apply a small amount of lube to screws.
3. Rotate cup to expose the (2) 1/8" holes, preferably vertical at 12 and 6 o'clock. Turn in center screw No. 3 with a 3/16 Allen wrench, until cup No. 4 gently bottoms onto face of seal. Apply a small amount of lube to screws. Install the 2 self tapping screws No. 2287, into the two 1/8" holes. Using pressure, start self tapping screws. Tighten screws just so the head of screw makes contact with tool (sometimes a light hammer tap will help start the screws).
4. Once tight turn out center screw, counter clockwise, removing seal.

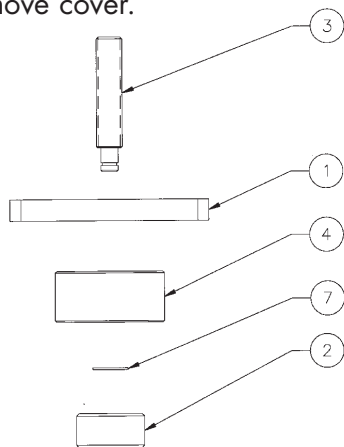
TO INSTALL SEAL

1. Apply a small amount of oil on the inside lip of seal, and center seal over hole and cam. Install tool to inside of cam cover using (2) 8-32 screws No. 2297. Apply a small amount of lube to screws.
2. Center cup No. 4 over seal. Turn center screw in clockwise until cup bottoms on cover.

TO REMOVE CAM COVER

This tool can also be used to remove cam cover without prying.

1. Install cup No. 2 with counter bore towards tool. (Flat side toward cam) Make sure all bolts are removed from cam cover. Install tool with the (2) 8-32 screw to inside of cam cover. Turn center screw in clockwise slowly to remove cover.



PARTS AVAILABLE SEPARATELY

No.	Qty.	Description	Part No.
7	1	CLIP	2304
6	2	SCREWS (NOT SHOWN)	2297
5	2	SHEET METAL SCREW (NOT SHOWN)	2287
4	1	CUP, INSTALLER & REMOVER	2243-4
3	1	SCREW, INSTALLER & REMOVER	2243-3
2	1	CAP	2243-2
1	1	PLATE, INSTALLER & REMOVER	2243-1
	1	INSTRUCTION SHEET	2243-IS

CAUTION: WEAR SAFETY GLASSES. EXCESSIVE FORCE MAY DAMAGE PARTS!
SEE JIMS® CATALOG FOR OVER 100 OTHER TOP QUALITY PROFESSIONAL TOOLS.
THE LAST TOOLS YOU WILL EVER NEED TO BUY.

"From the Track... To the Street!"

When it comes to quality motorcycle tools, JIMS is the brand you can depend on.