



A Division of Thiessen Products, Inc.

INSTRUCTION SHEET FOR TOOL No.1051



PISTON PIN BUSHING TOOL
 USE ON ALL TWIN CAM 1999-2006
 USE TO REMOVE AND INSTALL WRIST PIN BUSHING WITH-
 OUT REMOVING RODS FROM CRANKCASE

Note: Read entire instruction sheet before doing the job.

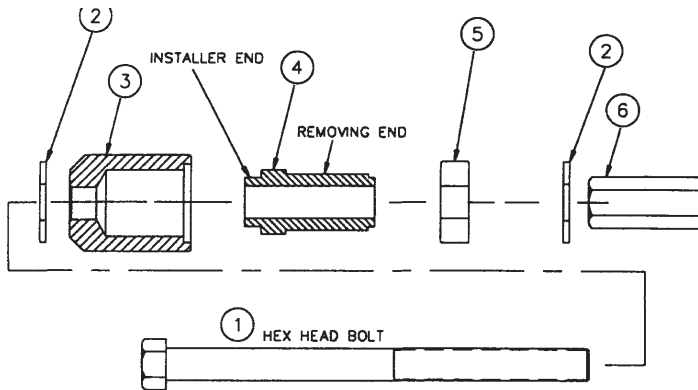
1. Refer to H-D® Service Manual for specifications.
2. Start with a clean motor and a clean area to work in.
3. Remove top end per H-D® service manual. Be sure to disconnect the battery ground wire.
4. Secure rod with JIMS® tool No.1284 connecting rod clamp, and be sure to seal off the entire crank case area to keep out any debris.
5. Go over the parts list from #1 through #6.
6. Apply a little lube to all moving parts such as threads, washers and thrust bearing.

To remove bushing:

7. Slip 1 brass washer #2 over bolt #1 followed by slider #3. With slider #3 up against one side of rod with bolt #1 through bushing.
8. Slip puller #4 with long removing end against rod (see parts list) followed by thrust bearing #5 then brass washer #2 over bolt.
9. Thread on coupling nut #6. Tighten nut with a 11/16 wrench, while holding other end of bolt with a 3/4 wrench or socket.
10. Continue tightening nut until bushing is free of rod, remove tool.

To install bushing:

11. Installing is just the opposite of removing bushing except for puller #4, use the short installing end (see parts list). To push bushing into rod use a press fit lube, on bushing and rod hole. Align the slot in bushing with the slot or hole in the top of rod. Tighten nut #6 until tool stops at the face of rod.
12. Fit new bushing per H-D® Service Manual and also check rod for straightness. Do the other rod in the same manner.



PARTS AVAILABLE SEPARATELY			
No.	Qty.	Description	Part No.
1	1	BOLT	2009
2	2	BRASS WASHER	2129
3	1	SLIDER	1051-1
4	1	PULLER	1051-2
5	1	BEARING	2010
6	1	COUPLING NUT	2011
7	1	INSTRUCTION SHEET	1051-IS

CAUTION: WEAR SAFETY GLASSES. EXCESSIVE FORCE MAY DAMAGE PARTS! ,SEE JIMS® CATALOG FOR OVER 200 OTHER TOP QUALITY PROFESSIONAL TOOLS. THE LAST TOOLS YOU WILL EVER NEED TO BUY.

"From the Track... To the Street!"

When it comes to quality motorcycle tools, JIMS is the brand you can depend on.