

PARTS INCLUDED

Ref.	Part Number	Description	Qty
1)	00-200-02005	Carbon Fiber Muffler Assembly	1
2)	00-200-01743	Headpipe Assembly	1
3)	00-200-01744	Midpipe Assembly	1
4)	04-18-41817	Inner Mounting Spacer (Large)	1
5)	04-18-42590	Outer Mounting Spacer (Small)	1
6)	01-5210125070-27	M10-1.25x70mm Hex Flange Head Cap Screw	1
7)	07-41-40004	Short Swivel Spring	1

08-50-46101 REV. B

19-3618-323-02

SLIP-ON EXHAUST, SS/CARBON FIBER

KAWASAKI NINJA 250
2008-2012

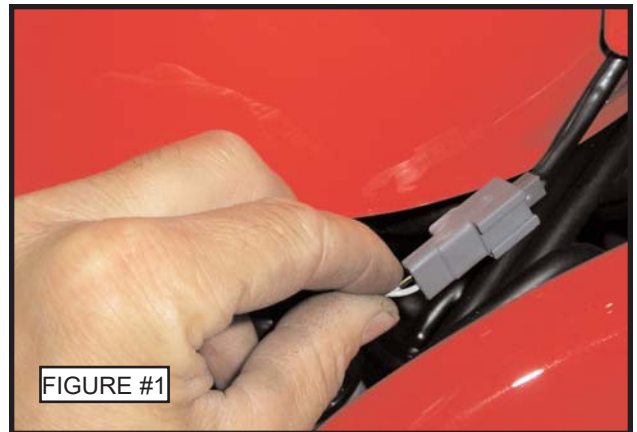
TOOLS REQUIRED

Ref.	Description
1)	3/8" Drive Ratchet
2)	3" Extension
3)	12mm Socket

Ref.	Description
4)	14mm Socket
5)	5mm Allen Wrench
6)	High-Temp Silicone sealer

REMOVAL/ INSTALLATION INSTRUCTIONS

- 1) Start by disconnecting the right side turn signal. (Figure #1)
- 2) Remove all hardware securing the right side and front fairings. Carefully remove the fairings from the bike.
- 3) Remove the 5mm allen bolts for the front of the heat shield. (Figure #2)
- 4) Remove the hose clamps on the front and rear of the heat shield. Then loosen the band clamp on the front of the muffler. (Figure #3)
- 5) Remove the 14mm bolt securing the muffler. Remove the muffler from the bike.
- 6) Loosen and remove the four 12mm nuts on the head flanges. Retain the nuts for the new system.
- 7) Remove the 10mm nut and bolt from the midpipe hanger bracket. Retain all hardware for the new system. Remove the stock exhaust system. (Figure #4)
- 8) Carefully remove the factory copper gaskets from the stock header. Work your way around evenly using a small flat tip screw driver or thin tool to avoid damaging them. (Figure #5)
- 9) Carefully slide the copper gaskets over the new header tubes.
- 10) Install the new header onto the studs using the four stock nuts. Leave the nuts loose at this time.



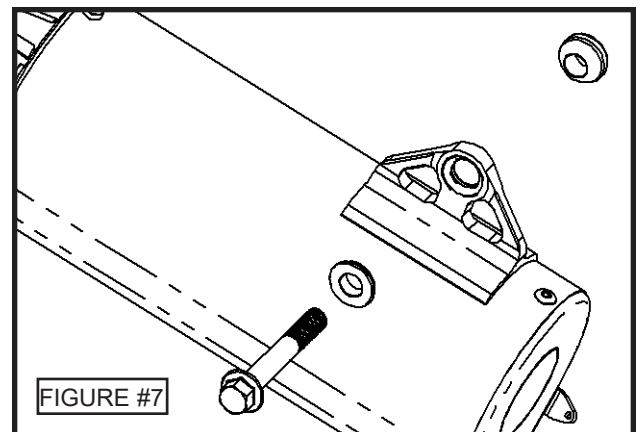
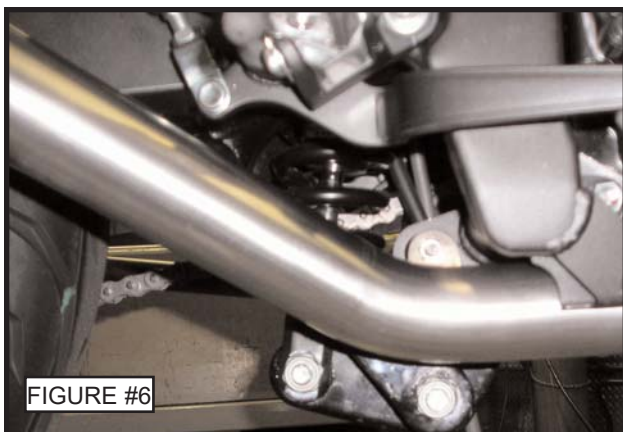
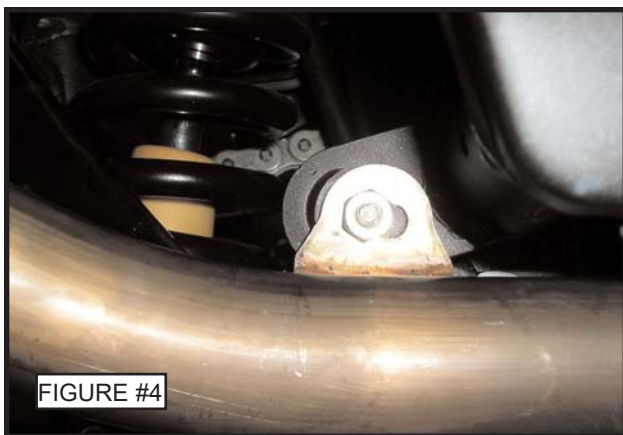
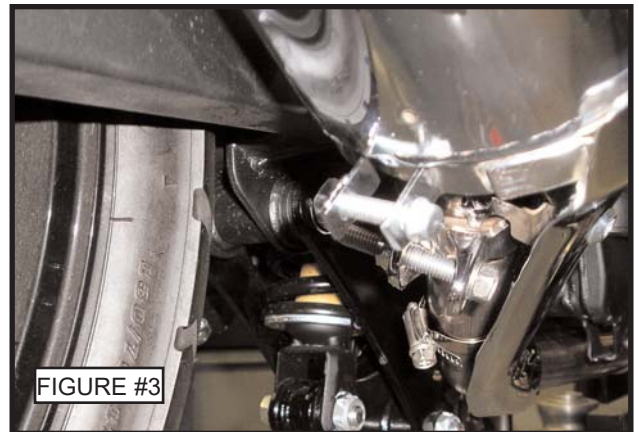
PERFORMANCE DELIVERED!

19-3618-323-02

SLIP-ON EXHAUST, SS/CARBON FIBER

KAWASAKI NINJA 250
2008-2012

- 11) Slide the new midpipe over the header assembly and mount it to the bike using the stock hardware. (Figure #6)
- 12) Install the new muffler over the slip-on tube. Connect the two using the supplied swivel spring.
- 13) Bolt the muffler to the bike using the supplied bolt, with the smaller spacer mounted to the outside of the muffler bracket and the large spacer to the inside of the muffler bracket. Then screw the bolt into the stock nut. (Figure #7)
- 14) When you are satisfied with the positioning, tighten all the header bolts, midpipe bolt and muffler bolt.
- 15) Reinstall the fairings and reconnect the turn signal.



PERFORMANCE DELIVERED!

Learn more about motorcycle parts on our website.