

PARTS INCLUDED

Ref.	Part Number	Description	Qty
1)	00-200-01181	GP1 Quiet Module Insert Assembly	1
2)	01-510610012-SS	Socket Button Head Cap Screw, M6-1.00X12mm	1
2)	01-8606-27	Locking Star Washer, 6mm	1

TOOLS REQUIRED

Ref.	Description	Ref.	Description
1)	Drill motor	3)	4mm Allen Wrench
2)	1/4" Drill Bit		

18-QMI5

GP1 QUIET MODULE INSERT

GP1 EXHAUST SYSTEMS

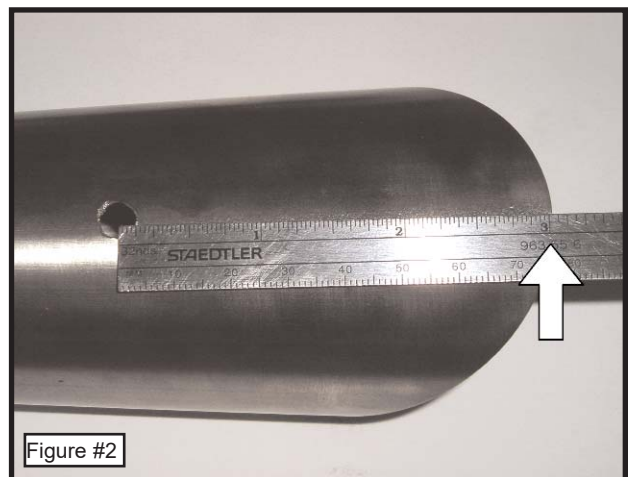
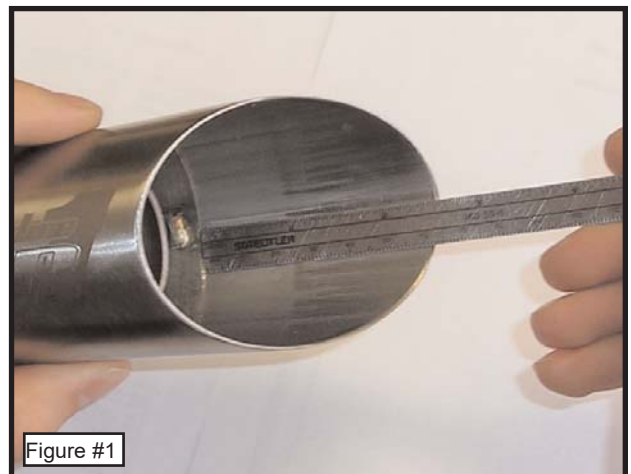
INSTALLATION INSTRUCTIONS

THE FOLLOWING IS AN OPTIONAL INSTALLATION ONLY. THE QMI IS INSTALLED WHEN THE REGULAR SOUND OUTPUT OF THE GP1 EXHAUST IS TOO MUCH FOR THE RIDER OR LOCAL LAW ENFORCEMENT.

- 1) Follow your installation instructions, in reverse, to remove the GP1 exhaust from your motorcycle.
- 2) Carefully place the exhaust system on a workbench or table.

NOTE: In order to install the QMI, a hole must be drilled in the back side of the GP1 megaphone section.

- 3) Slide the QMI into the megaphone outlet of the GP1 pipe. Measure from the highest point on the slash cut portion of the megaphone down to the highest point on the QMI. See Figure #1
- 4) Make note of your measurement. Remove the QMI insert.
- 5) Add 7/16" to the measurement taken in steps 3-4. On the outside of the GP1 megaphone, make a mark that is the measured amount from the highest point on the slash cut. See Figure #2
- 6) Carefully drill a 1/4" hole in the megaphone where you made your mark. Deburr the hole. See Figure #6
- 7) Slide the QMI insert inside the megaphone and position it so that the threaded hole in the QMI is showing through the new drilled hole. Secure the QMI to the megaphone using the supplied M6-1.00x12mm button head bolt and locking star washer.
- 8) Reinstall the exhaust system to the motorcycle.



PERFORMANCE DELIVERED!

Learn more about motorcycle parts on our website.