

PARTS INCLUDED

| Ref. | Part Number | Description | Qty |
|------|-----------------|---|-----|
| 1) | 00-200-02571 | Slip-on GP1 Exhaust Assembly | 1 |
| 2) | 07-3842058-35 | T-Bolt Clamp | 1 |
| 3) | 05-31-47542 | Midpipe Cover | 1 |
| 4) | 00-200-01181 | Quiet Module Insert (optional) | 1 |
| 5) | 01-510610012-SS | Socket Button Head Bolt, M6-1.0x12mm (optional) | 1 |
| 6) | 01-8606-27 | Star Lock Washer, 6mm (optional) | 1 |

18-4022-723-03

GP1 SLIP-ON EXHAUST, BLACK

SUZUKI GSX-R600 / GSX-R750

TOOLS REQUIRED

| Ref. | Description | Ref. | Description |
|------|--------------------|------|---------------------------|
| 1) | 3/8" Drive Ratchet | 5) | 14mm Socket |
| 2) | 3" Extension | 6) | 12mm Socket |
| 3) | 4mm Allen Socket | 7) | Drill Motor (optional) |
| 4) | 12mm Wrench | 8) | 1/4" Drill Bit (optional) |

INSTALLATION INSTRUCTIONS

NOTE: Prior to working on anything, make sure the motorcycle is cool and place securely on a service lift or side stand.

- 1) Remove the bolt securing the metal cover to the stock midpipe, just beyond the fairing. Remove the cover. (Fig. 1)
- 2) Loosen the clamp bolt securing the stock midpipe to the catalytic box under the motor. (Fig. 1)
- 3) Remove the bolt securing the muffler to the right side passenger peg mount. Remove the stock muffler from the motorcycle. (Fig. 1)
- 4) Place the supplied t-bolt clamp onto the notched inlet of the GP1 slip-on assembly. Slide the GP1 pipe onto the catalytic box outlet until it is fully seated.
- 5) Rotate the GP1 pipe until there is approximately 3/8" clearance to the swingarm on the motorcycle. Fully tighten the t-bolt clamp.
- 6) Using the original cover bolt, mount the new midpipe cover to the bracket on the catalytic box outlet.
- 7) **Clean all fingerprints and grease from the GP1 pipe.**

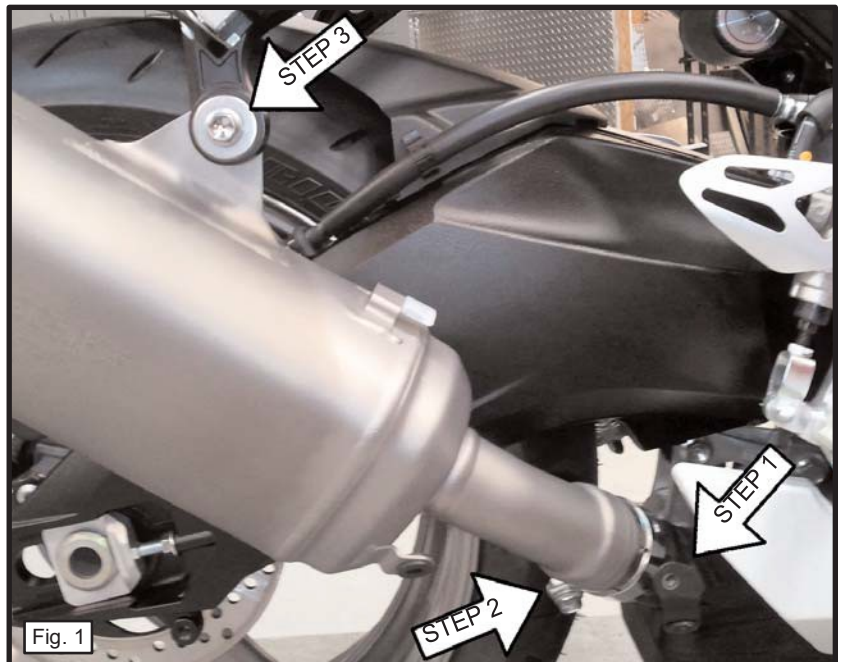


Fig. 1

PERFORMANCE DELIVERED!

18-4022-723-03

GP1 SLIP-ON EXHAUST, BLACK

SUZUKI GSX-R600 / GSX-R750

- 8) Start the motorcycle, check for any exhaust leaks, then stand back and admire how clean your bike looks & sounds!

THE FOLLOWING IS AN OPTIONAL INSTALLATION ONLY. THE QMI IS INSTALLED WHEN THE REGULAR SOUND OUTPUT OF THE GP1 EXHAUST IS TOO LOUD FOR THE RIDER.

- 1) Follow the installation instructions, in reverse, to remove the GP1 exhaust from the motorcycle.
- 2) Carefully place the exhaust system on a workbench or table.

NOTE: In order to install the QMI, a hole must be drilled in the back side of the GP1 megaphone section.

- 3) Slide the QMI into the megaphone outlet of the GP1 pipe. Measure from the highest point on the slash cut portion of the megaphone down to the highest point on the QMI. (Fig. 2)

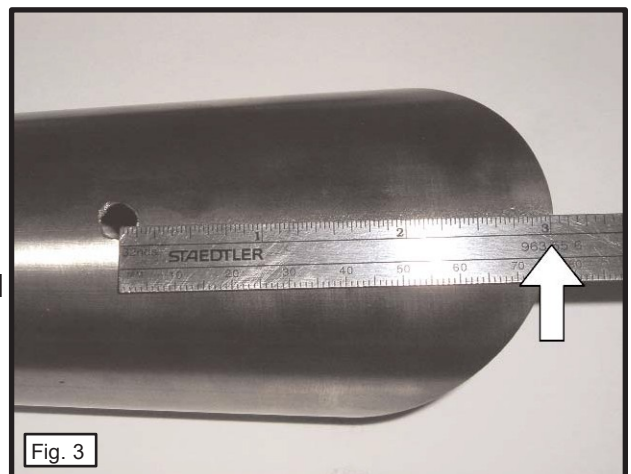
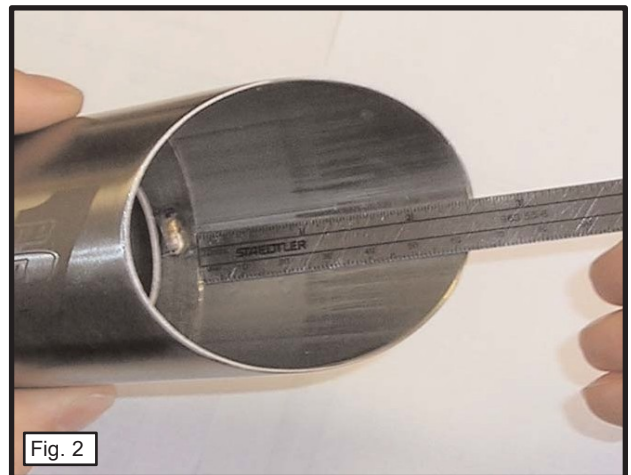
- 4) Make note of your measurement. Remove the QMI insert.

- 5) Add 7/16" to the measurement taken in steps 3-4. On the outside of the GP1 megaphone, make a mark that is the measured amount from the highest point on the slash cut. (Fig. 3)

- 6) Carefully drill a 1/4" hole in the megaphone where you made your mark. Deburr the hole. (Fig. 3)

- 7) Slide the QMI insert inside the megaphone and position it so that the threaded hole in the QMI is showing through the new drilled hole. Secure the QMI to the megaphone using the supplied M6-1.00x12mm button head bolt and locking star washer.

- 8) Reinstall the GP1 pipe to the motorcycle.



PERFORMANCE DELIVERED!

Learn more about motorcycle parts on our website.