

## PARTS INCLUDED

Ref.	Part Number	Description	Qty
1)	00-200-02190	Left/Bottom Slip-on GP1 Exhaust Pipe Assembly	1
2)	00-200-02189	Right/Top Slip-on GP1 Exhaust Pipe Assembly	1
3)	07-3842058-35	T-Bolt Clamp	2
4)	01-5106100012-SS	M6-1.0x12mm Socket Button Head Bolt	1
5)	01-8606-27	Star Lock Washer, 6mm	1
6)	00-200-01181	Quiet Module Insert Assembly (optional)	2
7)	01-5106100012-SS	M6-1.0x12mm Socket Button Head Bolt (optional)	2
8)	01-8606-27	Star Lock Washer, 6mm (optional)	2

18-4021-723-02P

GP1 SLIP-ON EXHAUST, POLISHED

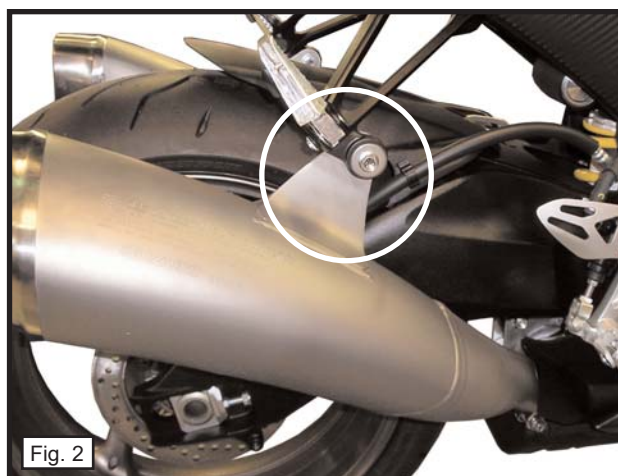
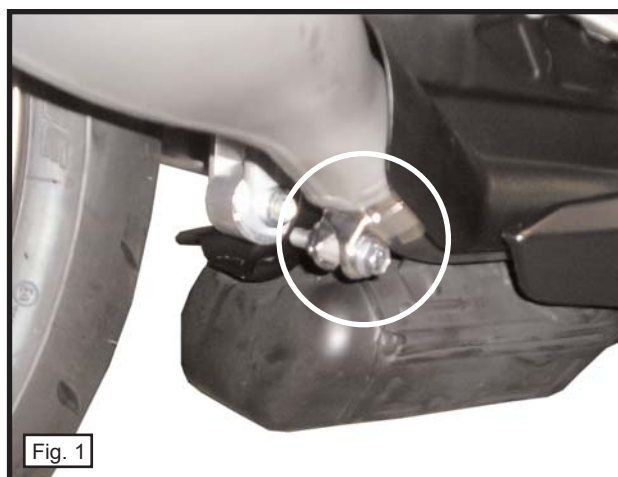
SUZUKI GSX-R1000  
2009-10

## TOOLS REQUIRED

Ref.	Description	Ref.	Description
1)	3/8" Drive Ratchet	6)	11mm Socket
2)	3" Extension	7)	12mm Socket
3)	5mm Allen Socket	8)	Hacksaw or Cut-off Wheel
4)	12mm Wrench	9)	Drill Motor (optional)
5)	10mm Socket	10)	1/4" Drill Bit (optional)

## INSTALLATION INSTRUCTIONS

- 1) Make sure the motorcycle is cool and place securely on a service lift or center stand.
- 2) Loosen the clamp bolt securing the stock right side midpipe to the catalytic box under the motor. (Fig. 1)
- 3) Remove the bolt securing the stock right side muffler to the passenger peg mount. (Fig. 2)
- 4) Remove the complete right side muffler assembly from the motorcycle. If the stock gasket was not removed with the muffler assembly, remove it from the catalytic outlet now.
- 5) Loosen the clamp bolt securing the stock left side midpipe to the catalytic box under the motor.
- 6) Remove the bolt securing the stock left side muffler to the passenger peg mount.
- 7) Remove the complete left side muffler assembly from the motorcycle. If the stock gasket was not removed with the muffler assembly, remove it from the catalytic outlet now.
- 8) Remove the rearmost bolt on the lower right side fairing.
- 9) Remove the O2 sensor from the right side of the catalytic box. Set it aside, but be careful not to damage it. (Fig. 3)



18-4021-723-02P

GP1 SLIP-ON EXHAUST, POLISHED

SUZUKI GSX-R1000  
2009-10

10) Loosen the clamp bolt securing the headpipe outlet tube to the catalytic box inlet.

11) Remove the bolts securing the catalytic box to the motorcycle. Remove the catalytic box.

12) Make a mark on the **LEFT SIDE OUTLET** of the catalytic box, that is 1" from the end of the tube. (Fig. 4) Using a hacksaw or cut-off wheel, remove 1" of tubing from the left side outlet.

13) Using the original hardware, reinstall the catalytic box in the original position. Reinstall the O2 sensor.

14) Place one supplied t-bolt clamp onto the inlet of the left side GP1 slip-on pipe. Position the GP1 pipe under the swingarm and slide it onto the left side catalytic outlet. (Fig. 5) Do not tighten the clamp at this time.

15) Place the remaining t-bolt clamp onto the inlet of the right side GP1 slip-on pipe. Slide the GP1 pipe onto the right side catalytic outlet. (Fig. 6) Do not tighten the clamp at this time.

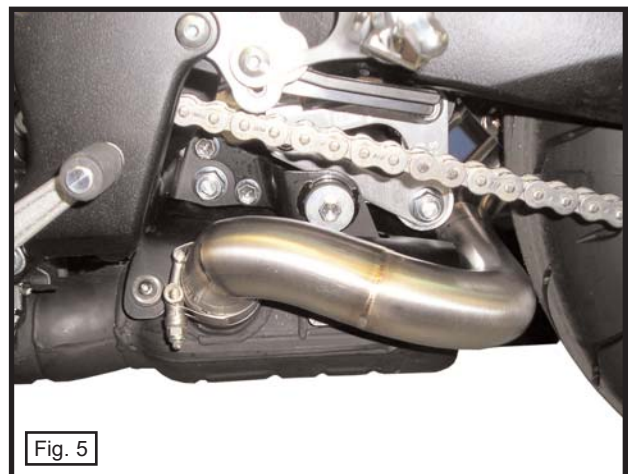
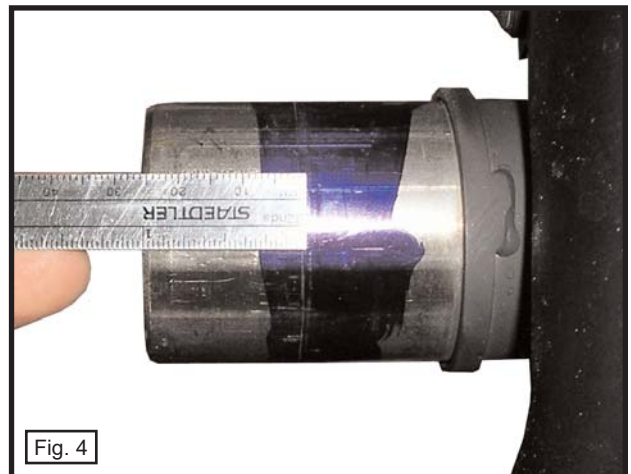
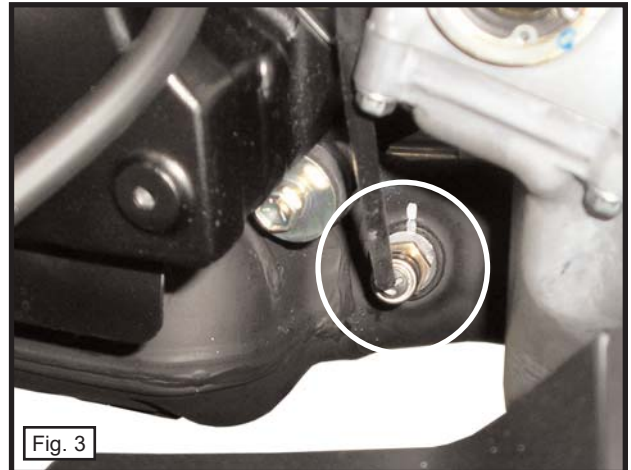
**NOTE:** When both pipes are installed, the left/bottom GP1 mounting bracket should be positioned inside of the right/top GP1 mounting bracket.

16) Using the supplied M6-1.0x12mm socket head bolt and 6mm locking star washer, secure the right/top and left/bottom GP1 pipes together. Do not fully tighten at this time.

17) Position the two GP1 exhaust pipes, then fully tighten the left & right t-bolt clamps. Fully tighten the mounting bracket hardware.

18) Clean all fingerprints and grease from the GP1 pipes prior to starting the motorcycle.

19) Start the motorcycle and check for any exhaust leaks.



PERFORMANCE DELIVERED!

18-4021-723-02P

GP1 SLIP-ON EXHAUST, POLISHED

SUZUKI GSX-R1000  
2009-10

### OPTIONAL QUIET MODULE INSERT (QMI)

THE FOLLOWING IS AN OPTIONAL INSTALLATION ONLY. THE QMI IS INSTALLED WHEN THE REGULAR SOUND OUTPUT OF THE GP1 EXHAUST IS TOO LOUD FOR THE RIDER.

- 1) Follow the installation instructions, in reverse, to remove the GP1 exhaust from the motorcycle.
- 2) Carefully place the exhaust system on a workbench or table.



Fig. 6

**NOTE:** In order to install the QMI, a hole must be drilled in the back side of the GP1 megaphone section. All of the following steps pertain to both GP1 pipes.

- 3) Slide the QMI into the megaphone outlet of the GP1 pipe. Measure from the highest point on the slash cut portion of the megaphone down to the highest point on the QMI. (Fig. 7)
- 4) Make note of your measurement. Remove the QMI insert.
- 5) Add 7/16" to the measurement taken in steps 3-4. On the outside of the GP1 megaphone, make a mark that is the measured amount from the highest point on the slash cut. (Fig. 8)
- 6) Carefully drill a 1/4" hole in the megaphone where you made your mark. Deburr the hole. (Fig. 8)
- 7) Slide the QMI insert inside the megaphone and position it so that the threaded hole in the QMI is showing through the new drilled hole. Secure the QMI to the megaphone using the supplied M6-1.00x12mm button head bolt and locking star washer.
- 8) Reinstall the exhaust system to the motorcycle.

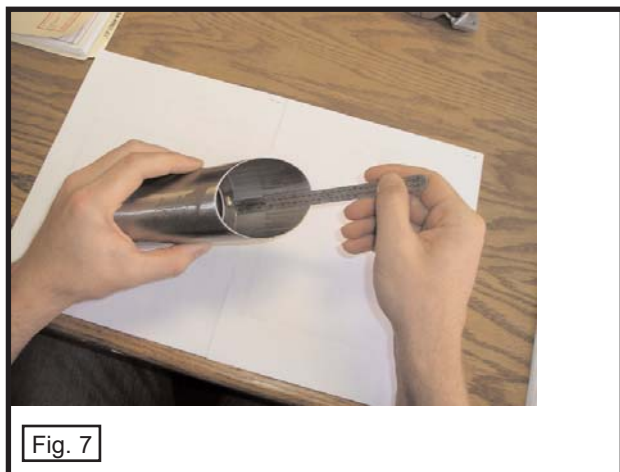


Fig. 7

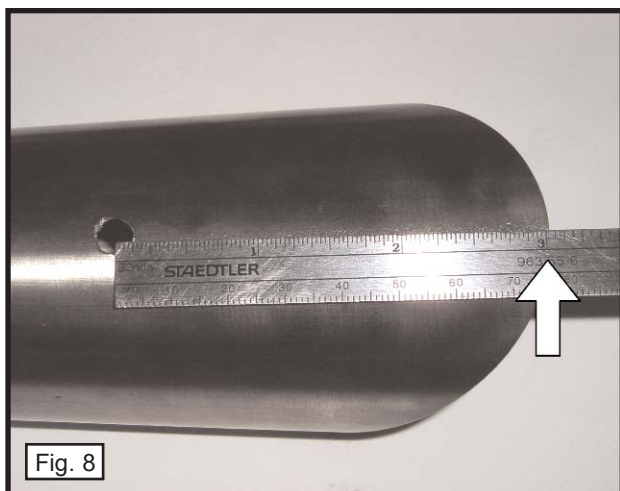


Fig. 8

PERFORMANCE DELIVERED!

Learn more about motorcycle parts on our website.