

## PARTS INCLUDED

Ref.	Part Number	Description	Qty
1)	00-200-02118	Slip-on GP1 Assembly, Polished	1
2)	01-7410125-27	M10-1.25 Hex Flange Nut	1
3)	04-25-41657	Exhaust Servo Bracket	1
4)	01-820508012-SS	M5-0.8x12mm Socket Head Bolt	1
5)	07-06-46329	Tamper Resistant Torx Bit, T27	1
6)	00-200-01181	Quiet Insert Assembly (optional)	1
7)	01-5106100012-SS	M6-1.0x12mm Socket Button Head Bolt (optional)	1
8)	01-8606-27	6mm Locking Star Washer (optional)	1

08-50-46408 REV. A

18-3021-723-02P

SLIP-ON GP1 EXHAUST

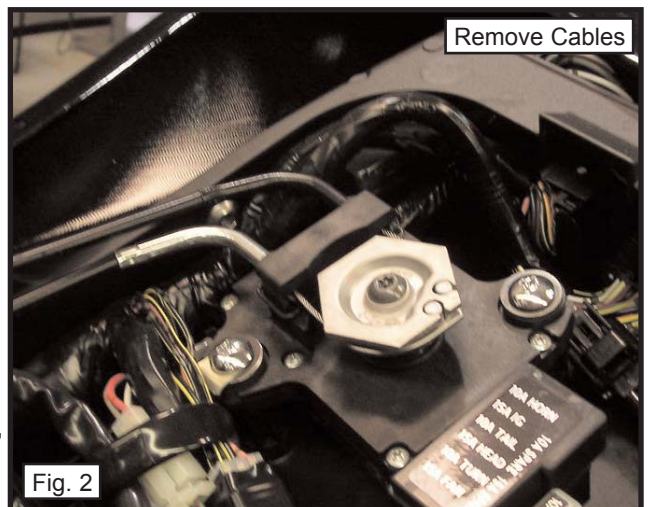
KAWASAKI ZX-6R

## TOOLS REQUIRED

Ref.	Description	Ref.	Description
1)	3/8" Drive Ratchet	4)	10mm Socket
2)	3" Extension	5)	12mm Socket
3)	8mm Socket	6)	13mm Deep Socket

## INSTALLATION INSTRUCTIONS

- 1) Make sure the motorcycle is cool and place securely on a service lift or stand.
- 2) Remove the right/rear lower fairing cover. (Fig. 1)
- 3) Remove the rider seat.
- 4) Remove the clip securing the exhaust butterfly valve cables to the servo block. Disconnect the cables from the servo cable stay. (Fig. 2)
- 5) Feed the cables down the right side of the subframe, and out of the motorcycle.
- 6) Loosen the clamp securing the stock muffler section to the pre-muffler section of the stock exhaust system. (Fig. 3)
- 7) Remove the stock muffler mounting bolt from the passenger peg mount. Remove the muffler section from the motorcycle.
- 8) Loosen the clamp securing the stock pre-muffler section to the headpipe outlet. (Fig. 4)
- 9) Remove the mounting bolts securing the stock pre-muffler section to the motorcycle frame. Remove the pre-muffler section. (Fig. 4)
- 10) Remove the small bent bracket that was used to mount the pre-muffler section to the motorcycle frame. Retain the mounting bolt. (Fig. 4)
- 11) Slide the Jardine GP1 pipe inside the head pipe outlet, and line the mounting bracket up with the location on the motorcycle frame.



PERFORMANCE DELIVERED!

18-3021-723-02P

SLIP-ON GP1 EXHAUST

KAWASAKI ZX-6R

## INSTALLATION INSTRUCTIONS

- 12) Using the original bolt, and supplied M10-1.25 hex flange nut, secure the GP1 pipe to the frame. Do not fully tighten the bolt at this time.
- 13) Position the GP1 pipe, then fully tighten the head pipe outlet clamp, then the mounting bolt.
- 14) Using the supplied T27 torx bit, remove the bolt securing the exhaust servo cable stay, to the servo. (Fig. 5)
- 15) Take note of the line on top of the servo shaft. This line must be facing away from the stop block. If it is not facing away from the stop block, using your key, turn the ignition to the "on" position and the servo will rotate. Turn off the ignition when the line is facing away from the block. (Fig. 6)
- 16) Place the supplied aluminum bracket onto the servo shaft as shown. Secure the bracket to the servo shaft using the supplied M5-0.8x10mm socket low head bolt. (Fig. 7)
- 17) Turn on the ignition key, and make sure no warning lights illuminate on the dash.
- 18) Clean all fingerprints and grease from the GP1 pipe. Start the motorcycle and check for any exhaust leaks.
- 19) Reinstall the rider seat.



Fig. 3

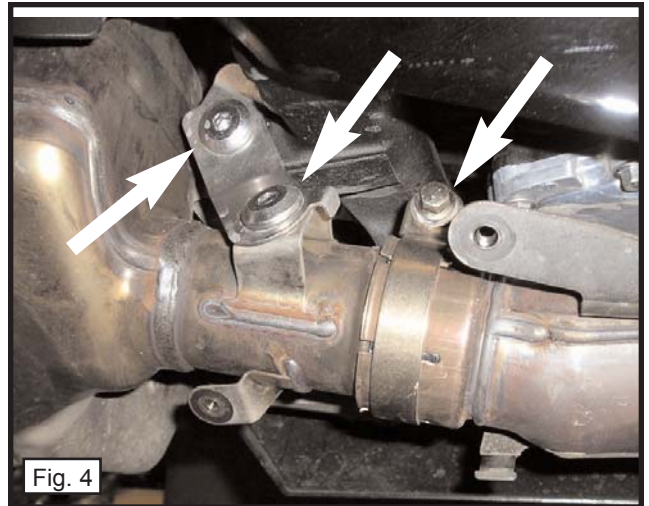


Fig. 4

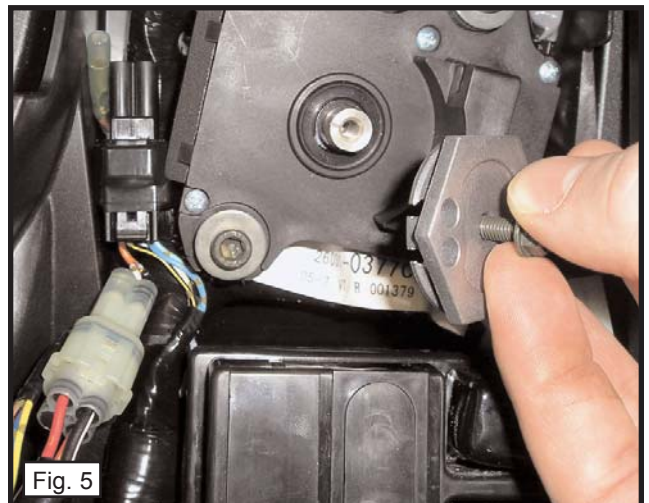


Fig. 5

PERFORMANCE DELIVERED!

18-3021-723-02P

SLIP-ON GP1 EXHAUST

KAWASAKI ZX-6R

### OPTIONAL QUIET MODULE INSERT (QMI)

THE FOLLOWING IS AN OPTIONAL INSTALLATION ONLY. THE QMI IS INSTALLED WHEN THE REGULAR SOUND OUTPUT OF THE GP1 EXHAUST IS TOO LOUD FOR THE RIDER.

- 1) Follow the installation instructions, in reverse, to remove the GP1 exhaust from the motorcycle.
- 2) Carefully place the exhaust system on a workbench or table.

**NOTE:** In order to install the QMI, a hole must be drilled in the back side of the GP1 megaphone section.

- 3) Slide the QMI into the megaphone outlet of the GP1 pipe. Measure from the highest point on the slash cut portion of the megaphone down to the highest point on the QMI. (Fig. 8)
- 4) Make note of your measurement. Remove the QMI insert.
- 5) Add 7/16" to the measurement taken in steps 3-4. On the outside of the GP1 megaphone, make a mark that is the measured amount from the highest point on the slash cut. (Fig. 9)
- 6) Carefully drill a 1/4" hole in the megaphone where you made your mark. Deburr the hole. (Fig. 9)
- 7) Slide the QMI insert inside the megaphone and position it so that the threaded hole in the QMI is showing through the new drilled hole. Secure the QMI to the megaphone using the supplied M6-1.00x12mm button head bolt and locking star washer.
- 8) Reinstall the exhaust system to the motorcycle.

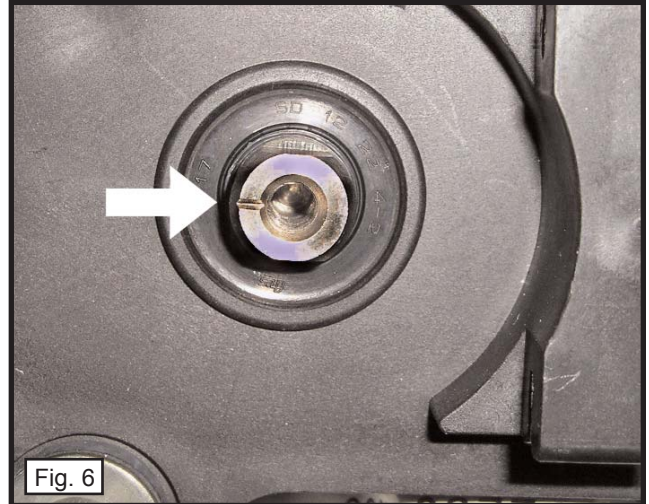


Fig. 6

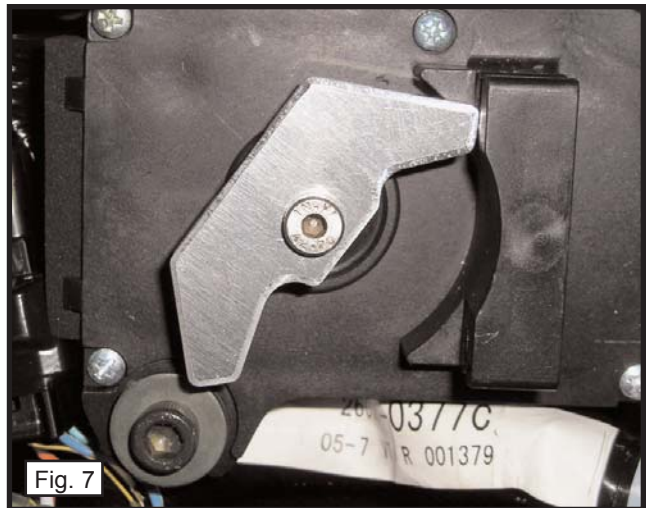


Fig. 7



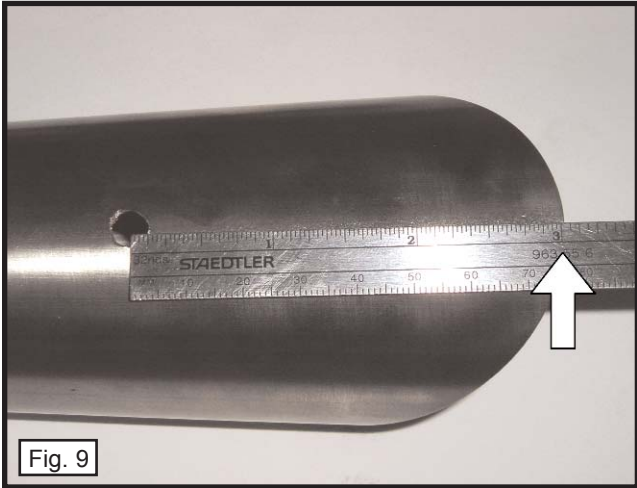
Fig. 8

PERFORMANCE DELIVERED!

18-3021-723-02P

SLIP-ON GP1 EXHAUST

KAWASAKI ZX-6R



PERFORMANCE DELIVERED!

Learn more about motorcycle parts on our website.