

PARTS INCLUDED

Ref.	Part Number	Description	Qty
1)	00-200-02482	Slip-on GP-1 Exhaust Assembly, Black	1
2)	07-3842063-35	T-Bolt Clamp	1
3)	04-25-41657	Servo Bracket	1
4)	01-030508010-SS	M5-0.8x10mm Socket Low Head Bolt	1
5)	00-200-01181	Quiet Module Insert (optional)	1
6)	01-510610012-SS	Socket Button Head Bolt, M6-1.0x12mm (optional)	1
7)	01-8606-27	Star Lock Washer, 6mm (optional)	1

18-3019-723-03

GP1 SLIP-ON EXHAUST, BLACK

KAWASAKI ZX-10R
2008-09

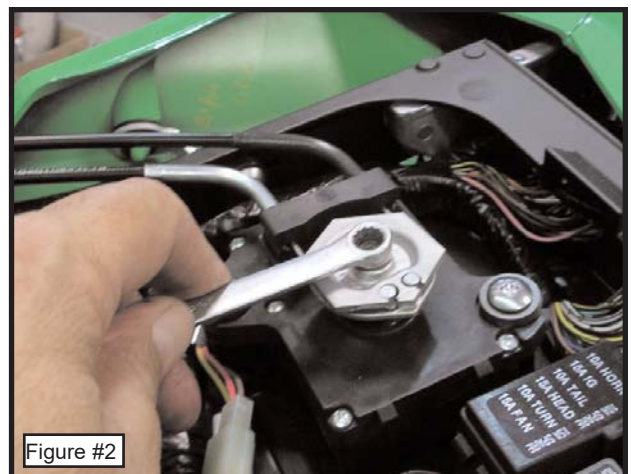
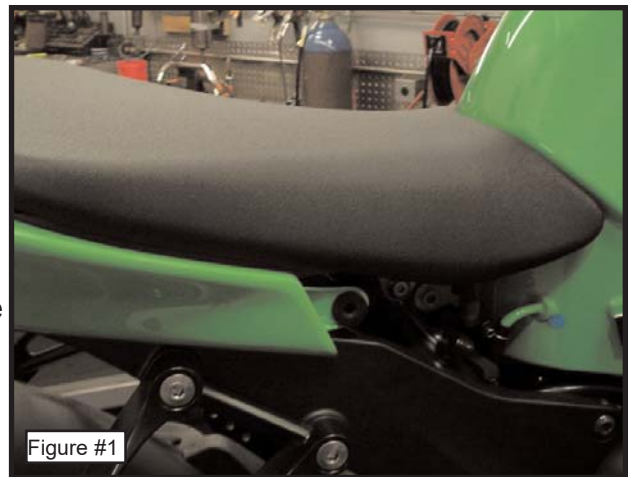
TOOLS REQUIRED

Ref.	Description	Ref.	Description
1)	3/8" Drive Ratchet	5)	14mm Socket
2)	3" Extension	6)	12mm Socket
3)	4mm Allen Socket	7)	Drill Motor (optional)
4)	12mm Wrench	8)	1/4" Drill Bit (optional)

INSTALLATION INSTRUCTIONS

NOTE: Prior to working on anything, make sure the motorcycle is cool and place securely on a service lift or stand.

- 1) Remove the bolt securing the right & left side cover, below the driver seat. Pull each cover firmly away from the motorcycle to remove. Set aside. (Fig. 1)
- 2) Remove the two bolts securing the driver seat to the motorcycle. Remove the driver seat.
- 3) Remove the retaining bracket from the exhaust butterfly servo, located under the driver seat. Remove the two cables connecting the servo to the butterfly valve on the muffler assembly.
- 4) Remove the bolt securing the cable stay to the servo. (Fig. 2)
- 5) Take note of the line on top of the servo shaft. This line must be facing away from the stop block. If it is not facing away from the stop block, using your key, turn the ignition to the "on" position and the servo will rotate. Turn off the ignition when the line is facing away from the block.
- 6) Place the supplied servo bracket onto the servo shaft as shown. Secure the bracket to the shaft using the supplied M5-0.8x10mm socket low head bolt. (Fig. 3)



PERFORMANCE DELIVERED!

18-3019-723-03

GP1 SLIP-ON EXHAUST, BLACK

KAWASAKI ZX-10R
2008-09

- 7) Remove the three bolts securing the lower fairing cover from the stock muffler assembly. Remove the cover. (Fig. 4)
- 8) Loosen the clamp securing the “pre-muffler” just behind the exhaust collectors. (Fig. 5)
- 9) Remove the mounting bolt located above the pre-muffler inlet.
- 10) Remove the bolts securing the muffler to the passenger peg mount. Remove the complete pre-muffler/muffler assembly from the motorcycle.
NOTE: You will need to feed the exhaust servo cables out of the motorcycle while you remove the muffler assemblies.
- 11) Place the supplied t-bolt clamp onto the new GP-1 pipe inlet. Slide the GP-1 pipe onto the collector outlet. Do not tighten the clamp at this time.
NOTE: While installing the GP-1 pipe, make sure the rear mounting tab is positioned inside the mounting bracket on the motorcycle. (Fig. 6)
- 12) Using the stock bolt secure the GP-1 pipe to the mounting bracket on the motorcycle. Fully tighten the bolt, then the t-bolt clamp.
- 13) Clean all fingerprints and grease from the GP1 pipe.
- 14) Place the lower fairing cover against the bracketry provided on the GP-1 pipe and secure using all stock hardware. (Fig. 7)
- 15) Start the motorcycle and check for any exhaust leaks.
- 16) Reinstall the driver seat and side covers.

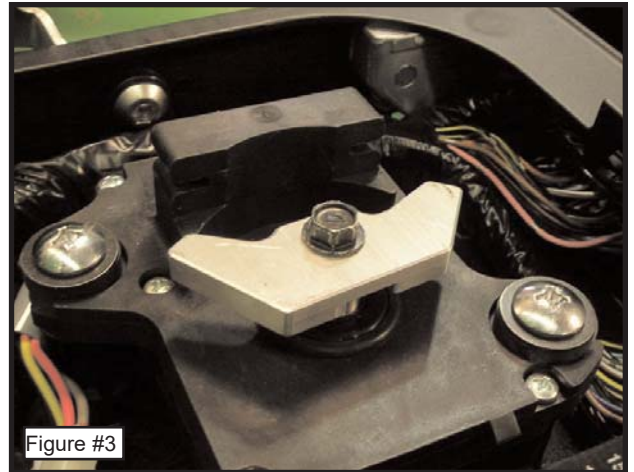


Figure #3

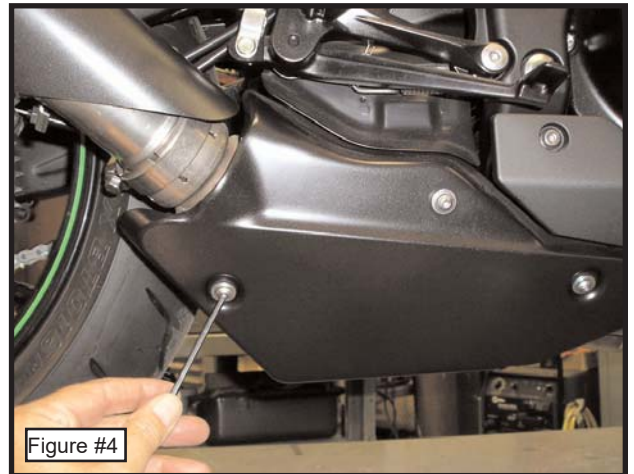


Figure #4

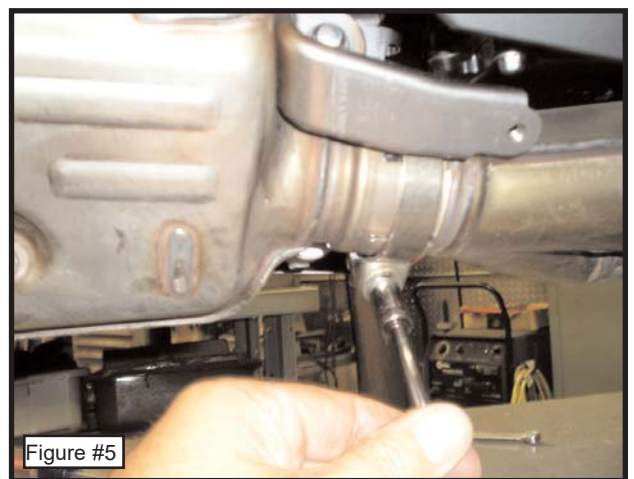


Figure #5

18-3019-723-03

GP1 SLIP-ON EXHAUST, BLACK

KAWASAKI ZX-10R
2008-09

OPTIONAL QUIET MODULE INSERT (QMI)

THE FOLLOWING IS AN OPTIONAL INSTALLATION ONLY. THE QMI IS INSTALLED WHEN THE REGULAR SOUND OUTPUT OF THE GP1 EXHAUST IS TOO LOUD FOR THE RIDER.

- 1) Follow the installation instructions, in reverse, to remove the GP1 exhaust from the motorcycle.
- 2) Carefully place the exhaust system on a workbench or table.

NOTE: In order to install the QMI, a hole must be drilled in the back side of the GP1 megaphone section.

- 3) Slide the QMI into the megaphone outlet of the GP1 pipe. Measure from the highest point on the slash cut portion of the megaphone down to the highest point on the QMI. (Fig. 7)
- 4) Make note of your measurement. Remove the QMI insert.
- 5) Add $7/16$ " to the measurement taken in steps 3-4. On the outside of the GP1 megaphone, make a mark that is the measured amount from the highest point on the slash cut. (Fig. 8)
- 6) Carefully drill a $1/4$ " hole in the megaphone where you made your mark. Deburr the hole. (Fig. 8)
- 7) Slide the QMI insert inside the megaphone and position it so that the threaded hole in the QMI is showing through the new drilled hole. Secure the QMI to the megaphone using the supplied M6-1.00x12mm button head bolt and locking star washer.
- 8) Reinstall the exhaust system to the motorcycle.



Figure #6

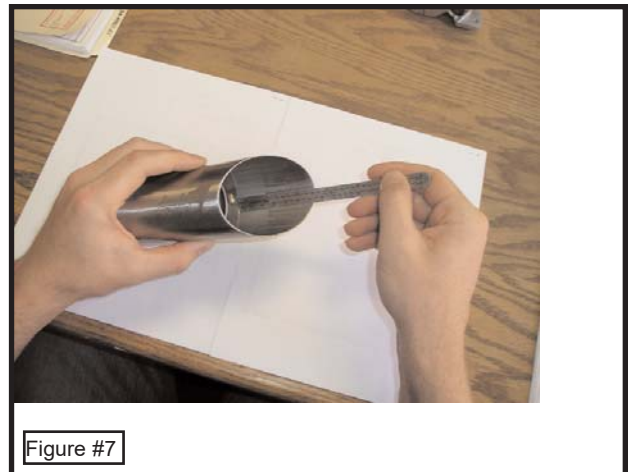


Figure #7

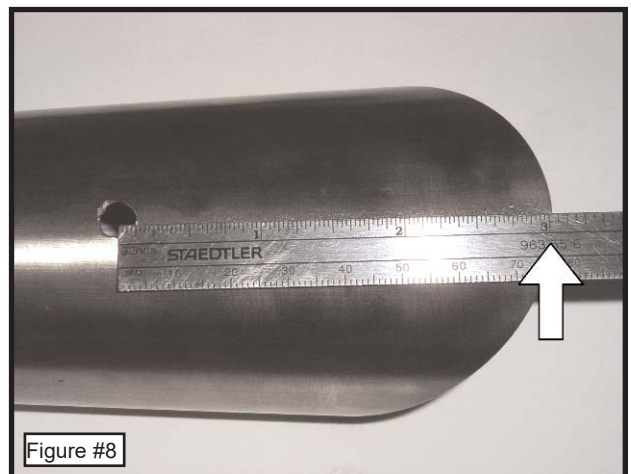


Figure #8

PERFORMANCE DELIVERED!

Learn more about motorcycle parts on our website.