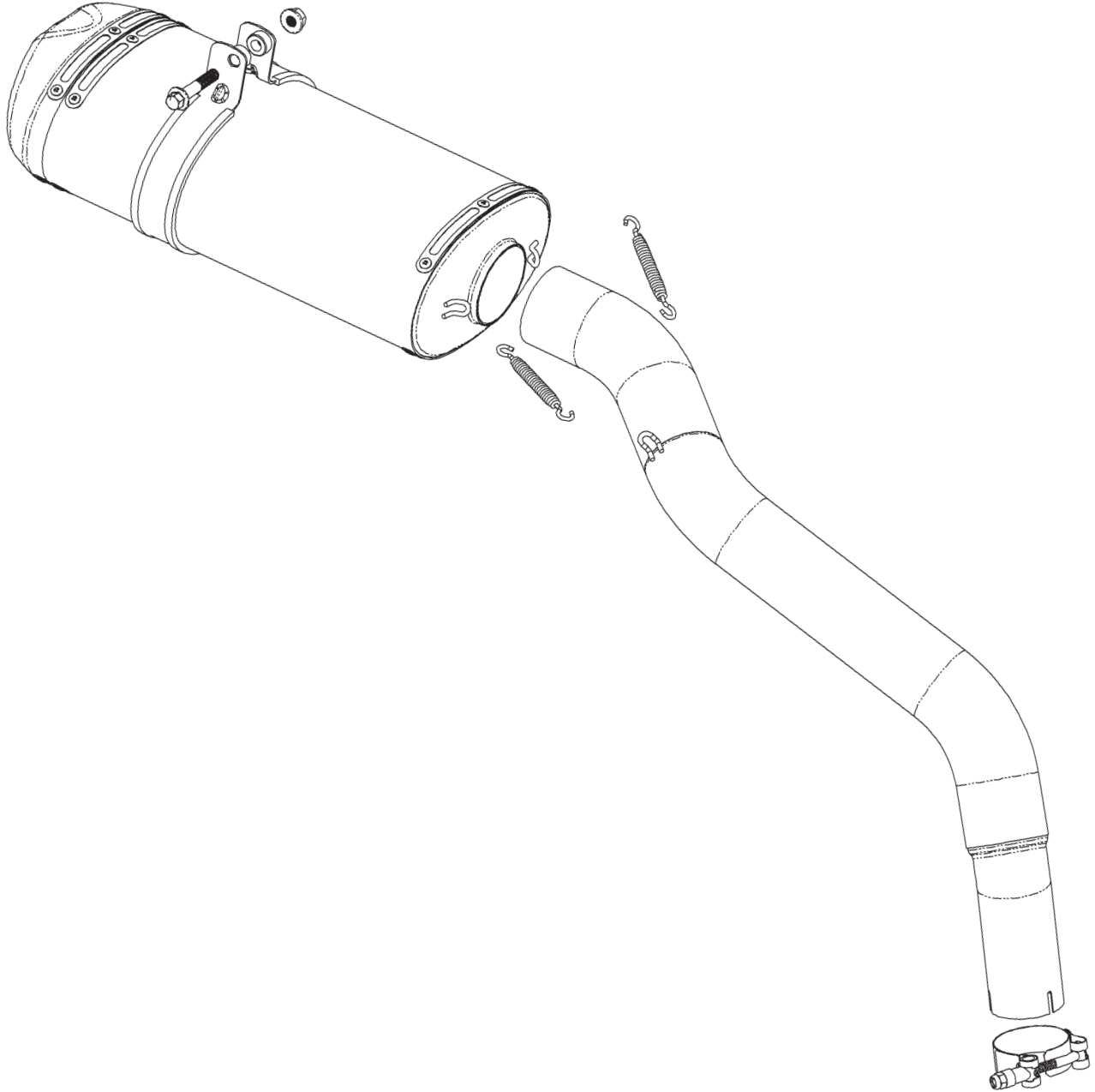


Jardine
PERFORMANCE PRODUCTS

18-1017-624-02

RT1 DUAL OUTLET SLIP-ON EXHAUST

HONDA CBR1000RR
2004-07



08-50-43144 REV. B

18-1017-624-02

RT1 DUAL OUTLET SLIP-ON EXHAUST

HONDA CBR1000RR
2004-07

PARTS INCLUDED

Ref.	Part Number	Description	Qty
1)	00-200-00031	Slip-on S-bend Assembly	1
2)	00-200-00035	Titanium Dual Outlet Muffler	1
3)	03-46-42004	Muffler Mounting Bracket	1
4)	07-27-42005	Muffler Strap Silicone Rubber Sleeve	1
5)	04-18-40135	Muffler Mounting Bracket Spacer	2
6)	07-41-35929	Swivel Spring, Long	2
7)	01-5308125045-27	M8-1.25x45mm Hex Flange Head Bolt	4
8)	01-7408125-27	M8-1.25 Hex Flange Nut	2
9)	07-38-42060-35	T-Bolt Clamp	1

TOOLS REQUIRED

Ref.	Description	Ref.	Description
1)	3/8" Drive Ratchet	8)	4mm Allen Socket
2)	3" Extension	9)	5mm Allen Socket
3)	8mm Socket	10)	8mm Allen Socket
4)	10mm Socket	11)	10mm Wrench
5)	12mm Socket	12)	13mm Wrench
6)	Phillips Screwdriver	13)	Torque Wrench
7)	3mm Allen Socket	14)	Spring Pull Tool or Needlenose Pliers

INSTALLATION INSTRUCTIONS

- 1) Place the motorcycle in a vise or on its kick stand and make sure it is safe and secure.
- 2) Remove the rider and passenger seats. Unplug the tail light, license plate light, and turn signals wires inside the tail section.
- 3) Remove the four bolts that secure the tail section to the subframe. Carefully remove the tail section from the subframe.
- 4) Remove the four bolts that secure the license plate/turn signal mount to the subframe. Remove the mount from the motorcycle.
- 5) Remove the two bolts that attach the right side footpeg assembly to the motorcycle. Disconnect the rear brake light switch and swing the footpeg assembly out of the way. Remove the outer plastic foot guard. Remove the aluminum heat shield from the motorcycle.

18-1017-624-02

RT1 DUAL OUTLET SLIP-ON EXHAUST

HONDA CBR1000RR
2004-07

INSTALLATION INSTRUCTIONS

- 6) Remove the clamp on the midpipe to tailpipe connection, just before the exhaust valve. Loosen the clamp at the headpipe to midpipe connection. Remove the cover from the exhaust valve. Loosen the jam nuts that secure the exhaust valve cables to the valve. Disconnect the cables.
- 7) Remove the midpipe mounting bolt, located on the right side of the subframe. Remove the muffler mounting bolts. Lower the muffler and remove the rear exhaust section from the midpipe. Remove the midpipe from the headpipe outlet.
- 8) Remove the large heat shield from under the sub frame.
- 9) Disconnect the exhaust valve cable from the actuator on the left side of the motorcycle and remove the cables. See Figure #1.
- 10) Place the provided t-bolt clamp onto the new s-bend inlet and slide it onto the headpipe outlet. Do not fully tighten at this time.
NOTE: Make sure that the t-bolt clamp is positioned so that you can tighten it when installed on the motorcycle.
- 11) Slide the Jardine dual outlet muffler onto the s-bend outlet and secure it to the s-bend using the two supplied swivel springs.
- 12) Attach the supplied rubber strip to the inside of the muffler clamp. Slide the muffler clamp over the muffler, with the offset holes toward the front of the motorcycle, and squeeze both muffler clamp tabs together. Secure the muffler clamp to the sub frame using the two supplied spacers, M8-1.25x45mm hex flange head bolt, and M8-1.25 hex flange nut. Do not fully tighten yet. See Figure #2.
- 13) Position the exhaust system so that all parts are in their best possible orientation. Fully tighten the t-bolt clamp and then the muffler clamp.
- 14) Clean all fingerprints from the exhaust. WD40 should be used to clean any titanium. Start the motorcycle and check for any exhaust leaks.
- 15) Reinstall the small aluminum side heat shield. Reinstall the right side foot peg assembly. Reinstall the plastic outer foot guard.
- 16) Reinstall the license plate/turn signal mounting bracket. Feed the wiring up through the sub frame and connect the plugs to their corresponding colors.

18-1017-624-02

RT1 DUAL OUTLET SLIP-ON EXHAUST

HONDA CBR1000RR
2004-07

INSTALLATION INSTRUCTIONS

17) Reinstall the tail section. Reconnect the tail light wire.

18) Reinstall the rider and passenger seats.

