

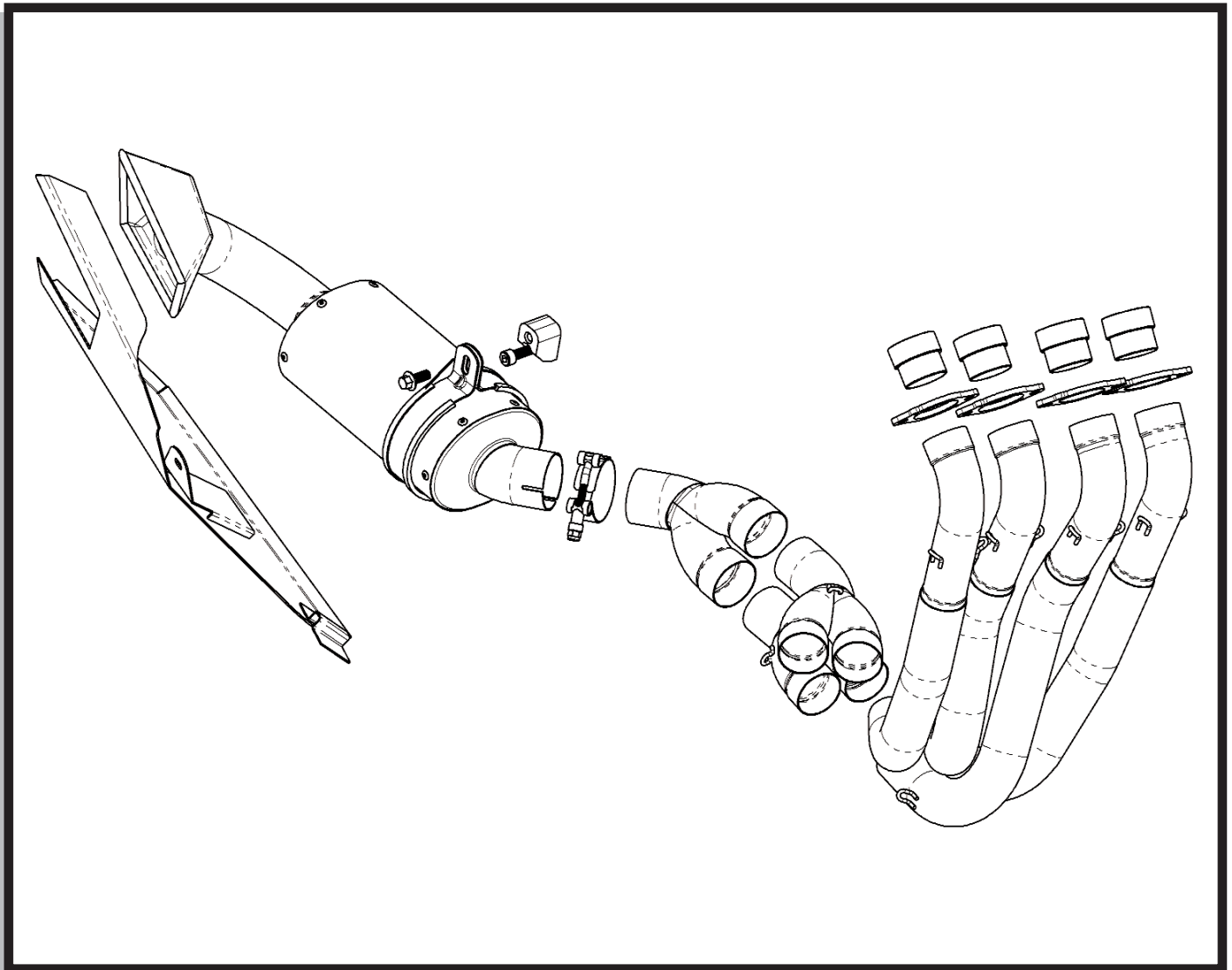
# Jardine

PERFORMANCE PRODUCTS

16-1524-723-02

GP1-R FULL EXHAUST

HONDA CBR1000RR  
2008-2011



THIS EXHAUST SYSTEM IS DESIGNED FOR USE IN CLOSED COURSE RACING ONLY, AND IS NOT INTENDED FOR PUBLIC HIGHWAY USE. IN THE STATE OF CALIFORNIA, IT IS ILLEGAL TO MODIFY THE EMISSION CONTROL SYSTEM ON ANY VEHICLE.

16-1524-723-02

GP1-R FULL EXHAUST

HONDA CBR1000RR  
2008-2011

### PARTS INCLUDED

Ref.	Part Number	Description	Qty
1)	00-200-02672	Headpipe #1	1
2)	00-200-02673	Headpipe #2	1
3)	00-200-02674	Headpipe #3	1
4)	00-200-02675	Headpipe #4	1
5)	00-200-02676	Primary Headpipe #1-2 Collector	1
6)	00-200-02677	Primary Headpipe #3-4 Collector	1
7)	00-200-02678	Secondary Headpipe Collector	1
8)	00-200-02679	Muffler & Exhaust Outlet Assembly	1
9)	00-200-02682	Fairing Panel	1
10)	02-06-47830	Headpipe Collar	4
11)	03-46-47794	Headpipe Flange	4
12)	04-11-47829	Muffler Mount Adapter	1
13)	00-200-02628	Muffler Mounting Strap	1
14)	07-27-38280	Silicone Muffler Strap Isolator	1
15)	07-23-47893	Adhesive Backed Hook & Loop, 2" x 1.5"	1
16)	07-41-35929	Swivel Spring, Long	14
17)	07-3842060-35	T-Bolt Clamp	1
18)	01-530812520-27	M8-1.25x20mm Hex Flange Head Bolt	1
19)	01-520812525-27	M8-1.25x25mm Socket Head Cap Screw	1

### TOOLS REQUIRED

Ref.	Description	Ref.	Description
1)	Ratchet	8)	4mm Allen Wrench
2)	3" & 6" Extension	9)	5mm Allen Wrench
3)	WD40 or Equivalent	10)	10mm Wrench
4)	Spring Pull Tool or Needlenose Pliers	11)	12mm Wrench
5)	High-Temp Silicone Sealant	12)	22mm Wrench
6)	Wire Cutters	13)	12mm Socket
7)	Medium Strength Thread Locker	14)	7/16" Deep Socket

16-1524-723-02

GP1-R FULL EXHAUST

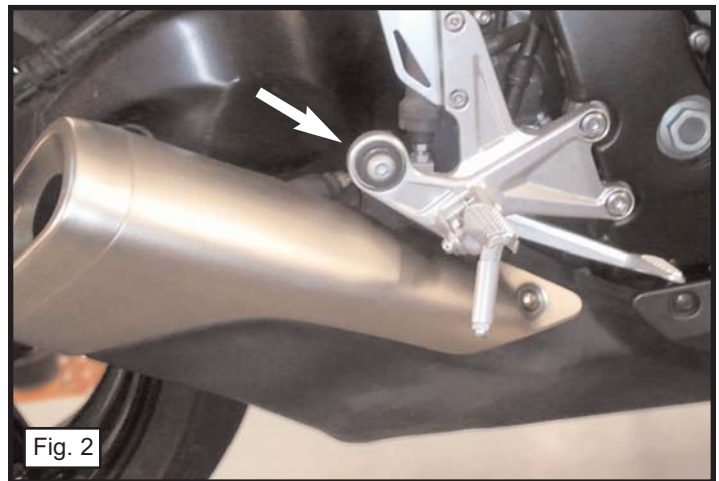
HONDA CBR1000RR  
2008-2011

## INSTALLATION INSTRUCTIONS

**NOTE:** Make sure the motorcycle is cool and secure on a service lift or stand before attempting any installation.

**NOTE:** We recommend the use of at least blue strength thread locker on all exhaust & fairing panel mounting bolts. Apply a small amount to each bolt when installing the GP1-R exhaust system, and related components.

- 1) Loosen the stock muffler inlet clamp bolt. (Fig. 1)
- 2) Remove the nut that secures the stock muffler to the right side driver footpeg. Do not remove the bolt yet. (Fig. 2)
- 3) Trace the cable from the stock muffler to a black plastic cover behind the right side passenger footpeg. Remove the plastic cover exposing the exhaust butterfly valve actuator. (Fig. 3)
- 4) Disconnect the cable from the actuator body. (Fig. 4)
- 5) Remove the bolt securing the rear brake reservoir to the right side driver footpeg. This will allow access to remove the butterfly valve cable from the motorcycle.
- 6) Remove the bolt the stock muffler is still attached to, and remove the complete stock muffler assembly. Feed the cable out as you remove the muffler.
- 7) Reattach the rear brake reservoir to the driver footpeg mount.



16-1524-723-02

GP1-R FULL EXHAUST

HONDA CBR1000RR  
2008-2011

## INSTALLATION INSTRUCTIONS

- 8) Reattach the plastic cover over the butterfly valve actuator.
- 9) Remove both the left and right lower fairings. There are a large number of bolts and push pin plastic fasteners securing the lower fairings to the motorcycle frame and other fairing pieces. Carefully work your way around each fairing, removing fasteners until each side comes free. Set each fairing aside so they will not get damaged.

*NOTE: Removing the fairings on late model CBR1000RR motorcycles is impressively difficult. Take your time & make note of everything you remove in order to get them off.*

- 10) Remove the lower radiator support bolt from the bracket. Swing the radiator out, away from the headpipes. (Fig. 5)

- 11) Remove the bolt securing the stock header outlet area to the underside of the motor. (Fig. 6)

- 12) Remove the 8 nuts securing the headers to the motor. Remove the header assembly from the motorcycle.

- 13) Using the supplied M8-1.25x25mm Socket Head Bolt, mount the Muffler Adapter Block to the stock header outlet bracket location. (Fig. 7) Position the block straight up & down, and fully tighten the mounting bolt.

- 14) Inspect all four exhaust ports to make sure the copper gaskets stayed in place when the header assembly was removed. Inspect gaskets for wear and replace if necessary.



Fig. 4



Fig. 5



Fig. 6

16-1524-723-02

GP1-R FULL EXHAUST

HONDA CBR1000RR  
2008-2011

## INSTALLATION INSTRUCTIONS

- 15) Using the original nuts, loosely mount the four supplied Headpipe Collars, and four Headpipe Flanges to the motor. Do not fully tighten the nuts at this time. (Fig. 8)

*NOTE: To ease header installation, prior to installing headers, hang one supplied Swivel Spring from each mounting hole location on the header flanges (8 springs total).*

- 16) Slide the #1,2,3,4 Headpipes onto the headpipe collars until they are **FULLY SEATED**. (Fig. 9)

*NOTE: Do not connect the headpipe springs yet.*

- 17) Slide the supplied #3-4 Primary Headpipe Collector over the #3 & 4 headpipe outlets, until **FULLY SEATED**. Secure using two supplied Swivel Springs. (Fig. 10)

*NOTE: The #3-4 Primary Headpipe Collector will be positioned above the #1-2 Primary Headpipe Collector when installed.*

- 18) Slide the supplied #1-2 Primary Headpipe Collector over the #1 & 2 headpipe outlets, until **FULLY SEATED**. Secure using two supplied Swivel Springs. (Fig. 10)

- 19) Slide the supplied Secondary Headpipe Collector over the Primary Collector outlets until **FULLY SEATED**. Secure using two supplied Swivel Springs. (Fig. 11)

- 20) Tighten all headpipe flange nuts to factory specification. Connect all 8 headpipe springs from the flanges to the headpipes.



Radiator removed for clarity

16-1524-723-02

GP1-R FULL EXHAUST

HONDA CBR1000RR  
2008-2011

## INSTALLATION INSTRUCTIONS

- 21) Reinstall the lower radiator support bolt. Tighten to factory specification.
- 22) Place the supplied T-bolt Clamp onto the notched Muffler Assembly inlet tube.
- 23) Apply a liberal amount of high temperature silicone sealant to the inside of the Muffler Assembly inlet tube, and slide the muffler assembly over the secondary headpipe collector outlet. (Fig. 12) Do not fully tighten the t-bolt clamp at this time.

*NOTE: Although not required, you may want to cut off the excess bolt threads protruding from the t-bolt clamp nut.*

- 24) Apply the supplied Silicone Muffler Strap Isolator to the inside of the supplied Muffler Strap. Work the muffler strap over the muffler until it is positioned near the Muffler Adapter Block installed in Step #13. from the stock muffler mounting bracket. (Fig. 12)

*NOTE: The gussets on the muffler strap should be closest to the rear of the motorcycle when the muffler strap is installed.*

- 25) Position the muffler strap, squeeze the muffler strap tabs together and against the muffler adapter block. Secure the Muffler Assembly to the motorcycle frame using the supplied M8-1.25x20mm Hex Flange Head Bolt. (Fig. 12) Do not fully tighten at this time.

*NOTE: By design, there is a small amount of adjustment in the exhaust system so that the fairing panel and exhaust outlet line up properly. The following steps may need to be performed a few times in order to adjust everything to fit as well as you would like.*



Fig. 10



Fig. 11



Fig. 12

16-1524-723-02

GP1-R FULL EXHAUST

HONDA CBR1000RR  
2008-2011

## INSTALLATION INSTRUCTIONS

- 26)** Reinstall the lower fairings to the motorcycle.  
Stop & take a break, because you surely need it after reinstalling those fairings.

*NOTE: Do not install the rearmost right side fairing mount bolt. That bolt will also be used to secure the new fairing panel.*

- 27)** Using the original fairing bolt, loosely secure the new Fairing Panel to the motorcycle frame. Make sure that when installing, the Fairing Panel brackets are placed inside the lower fairing. (Fig. 13)



- 28)** Make note of the location of the exhaust outlet in comparison to the new Fairing Panel. Remove the Fairing Panel.

- 29)** Adjust the location of the Muffler Assembly so that it will be best centered in the recess in the Fairing Panel.

- 30)** Make sure the T-bolt clamp is covering the notches on the muffler assembly inlet tube. Fully tighten the T-bolt clamp.



- 31)** Fully tighten the muffler mounting bolt.

*NOTE: It is important that thread locker (at least medium strength) is used when installing the muffler mounting bolts.*

- 32)** Using rubbing alcohol, clean the inside of the right side lower fairing where the front Fairing Panel bracket will make contact with it.

- 33)** Using rubbing alcohol, clean the side of the front Fairing Panel bracket that will contact the inside of the lower fairing.

- 34)** Peel one protective side of the supplied Adhesive Backed Hook & Loop square and place it onto the Fairing Panel bracket. (Fig. 14)

16-1524-723-02

GP1-R FULL EXHAUST

HONDA CBR1000RR  
2008-2011

## INSTALLATION INSTRUCTIONS

- 35) Install the Fairing Panel to the motorcycle, as shown in Step #27.
- 36) Reach under the lower fairing and peel the second side of the Adhesive Backed Hook & Loop square. Firmly press the lower fairing against the new front fairing panel bracket, until the hook & loop is fully secure.
- 37) Carefully go over all of the lower fairings to make sure that they are installed correctly, and that all fasteners have been properly reinstalled, and tightened.
- 38) Clean the new exhaust outlet and fairing panel of all fingerprints and grease.
- 39) Start your motorcycle and enjoy!

