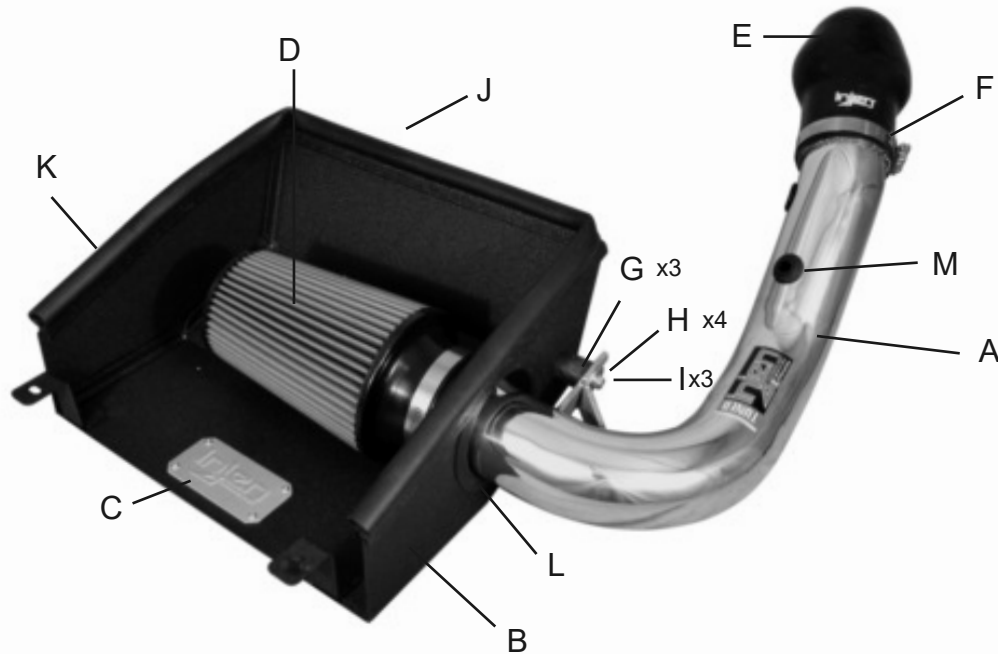


# Installation Instructions

P/N:PS7000



Vehicle Application:  
 Make: **Polaris**  
 Model: **Slingshot**  
 Year: **2015-2017**  
 Engine: **2.4L 4-cyl.**



Item	QTY.	P/N	Discription
A	1	Y-PS7000	Intake Tube
B	1	#11122	Heat shield
C	1	#11097	injen badge
D	1	#1078	Dry air filter
E	1	#3206	Cobra Elbow hose
F	2	#4004	#48 clamps
G	3	#6020	M6 vibramounts
H	4	#6010	Fender washers
I	3	#6002	M6 nuts
J	1	#6005	M6 hex screw
K	1	#6058	Rubbra trim @ 36.5" Length
L	1	#6023	Vinyl trim @ 12" Length
M	1	#6014	Temp Sensor Grommet

**TOOLS REQUIRED**

- 10mm Ratchet & Socket
- 8mm nut drive
- Allen key
- Flat Blade Screwdriver
- Philllips Screwdriver

**WARNING:** FAILURE TO FOLLOW INSTALLATION INSTRUCTIONS AND NOT USING THE PROVIDED HARDWARE MAY DAMAGE THE INTAKE SYSTEM, ENGINE AND COMPONENTS!!!  
**\*Do not attempt to install the intake system while the engine is hot.**  
 Severe burn could result from touching hot engine components!

Report any defective or missing parts to the authorized Injen dealer you purchased this product from. Before installing any parts of this system, please read the instructions thoroughly. If you have any questions regarding installation, please contact your Injen Technology dealer. Installation DOES require some mechanical skills. A qualified mechanic is always recommended.

A Limited Lifetime Warranty to the original purchaser against defects in material and workmanship on all Injen intake systems excluding the filter element. Any and all warranty coverage is limited to the repair or replacement of the defective part only, at Injen Technology's discretion. The warranty does not cover incidental or consequential damages, nor does it cover the cost of installation or removal of the defective part or its replacement. Proof of purchase is required.

# Installation Instructions P/N:PS7000

**NOTE:** This intake kit may not work on vehicles with the following aftermarket modifications.

- Aftermarket Intercooler piping
- Aftermarket intercooler
- Turbo upgrade
- Modified body panels
- Suspension & Chassis modifications

Injen intake systems are street legal in most states unless the state is adopting to California Emissions standards. States that have adopted California emission standards include: Arizona, California, Connecticut, District of Columbia, Maine, Maryland, Massachusetts, New Jersey, New Mexico, New York, Oregon, Pennsylvania, Rhode Island, Vermont, and Washington. These states will require an California Air Resource Board Executive Order Number (CARB E.O.) for the legal use of an Injen intake system in your vehicle for use on public roads or highways. These vehicle will be considered "Legal in California only for racing vehicles competition use only, which may never be used upon a public street or highway. **Please keep your factory air box assembly for any future use.**



The SuperNano-Web filter media is a dry synthetic media that outperforms the competition. The media itself is a proprietary base blend of synthetics and cellulose. Cellulose fibers are larger than synthetic fibers, and have larger spaces between the fibers, causing contaminants to load in the depth of the media and plug the airflow path. This creates higher restriction levels and less capacity. The synthetic fibers in the SuperNano-Web media are submicron in diameter and have small interior fiber spaces, which result in more contaminants being captured on the surface of the media. This can help keep restriction levels low as the filter loads with dirt and containments

**injen**  
TECHNOLOGY

Existing media without  
Injen SuperNano-Web Technology

Superior Injen  
SuperNano-Web Technology

A New Generation of Filters  
Designed to perform and  
filter like no other

**INJEN SuperNano-Web Technology**

If you look at the picture to the left, you can see the Nano-fiber web on top of our base media. That web, or SuperNano-Web as we like to call it, helps trap smaller particles and protect your engine.

## **To Clean your filter:**

Carefully remove the filter from the housing. Once removed, wipe down the housing using a clean shop towel, being careful not to knock any dirt and/or debris in the air inlet. Your filters can be cleaned by carefully vacuuming the filter media from the dirty side, or by holding the filter with one hand and carefully blowing the filter media at a 45-degree angle from the clean side using low-pressure shop air (15-20 lbs. psi).

***\*IT IS IMPORTANT TO NOT USE ANY CLEANERS ON THE SUPERNANO-WEB MEDIA OR APPLY ANY OIL!!!***

**NOTE: DISCONNECT BATTERY BEFORE INSTALLATION!!!**

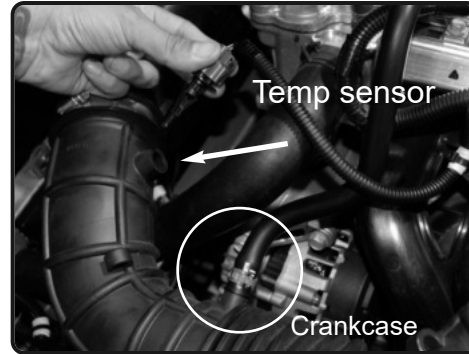
# Installation Instructions P/N:PS7000



1. Stock intake system shown.



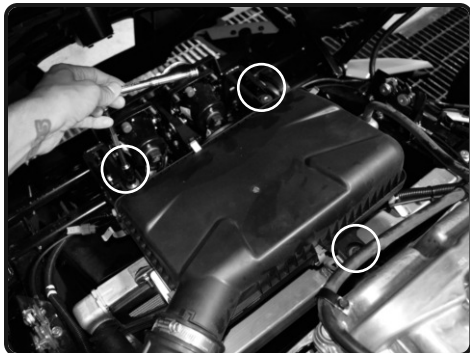
2. Loosen the clamp on the throttle body using 8mm nut driver.



7. Carefully pull out the temperature sensor out of intake tube. With pliers, disconnect clamp on crankcase line and pull hose away from the fitting. .



3. Now lift up and pull back the intake tube from the throttle body.



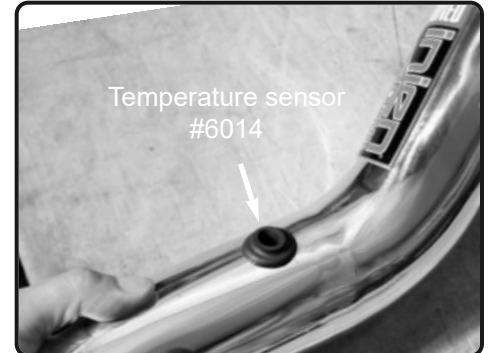
4. With 10mm socket and extension and ratchet, loosen the 3 bolts holding in the air box.



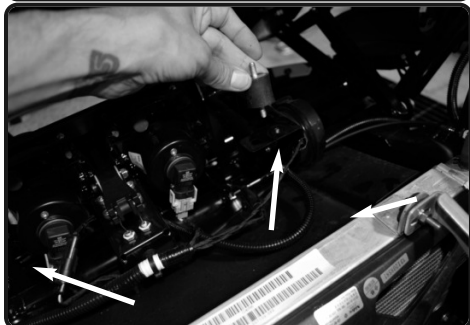
5. Carefully lift up and remove the entire stock air box assembly.



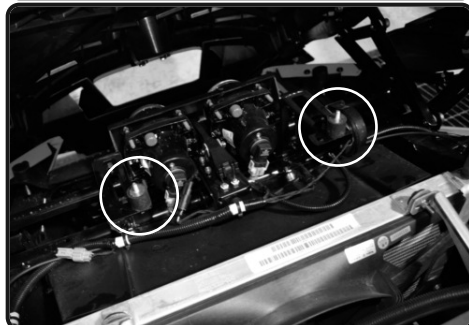
6. Install the provided rubber trim to the top of the heat shield. Notch corners for easy installation with pliers. Install the m6 vibramount to the threaded insert on heat shield.



7. Install the temperature sensor grommet to the hole on intake tube.



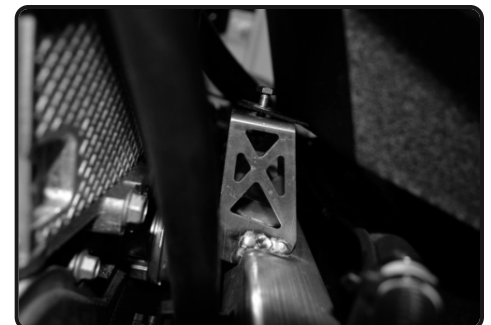
8. Now install the vibramounts to the 2 factory mounting position of the air box.



9. Secure and tighten the vibramounts.

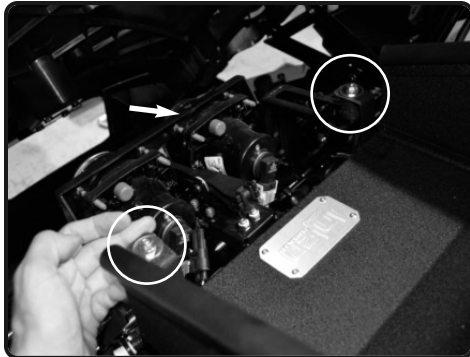


10. Install the heatshield and position the brackets to the vibramounts.



11. Now secure the back bracket to the factory air box mounting position. Secure using provided m6 hex screw and fender washer.

# Installation Instructions P/N:PS7000



**12.** Secure the heat shield using provided M6 nuts and fender washers.



**13.** Tighten all nuts and screws using 10mm socket and ratchet.



**14.** Install the cobra head to throttle body with clamps provided. Do not tighten clamps.



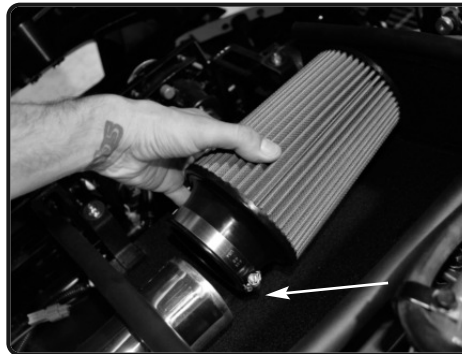
**15.** Now install intake tube and position the tube through heat shield and bracket to vibramount on heat shield. Install to cobra head, Do not tighten.



**16.** Secure the bracket using provided M6 nut and fender washer.



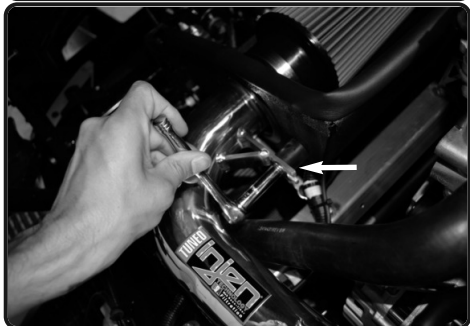
**17.** Now position the intake tube for best fit, close hood to see the cobrahead is in the correct position and does not hit. Tighten both clamps using 8mm nut driver.



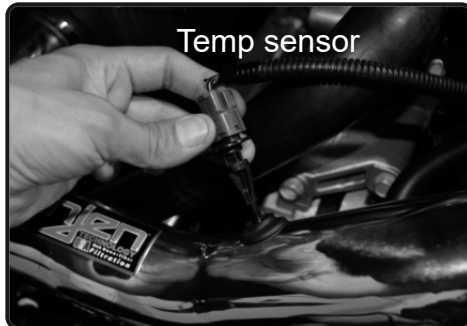
**18.** Install the filter to the intake tube.



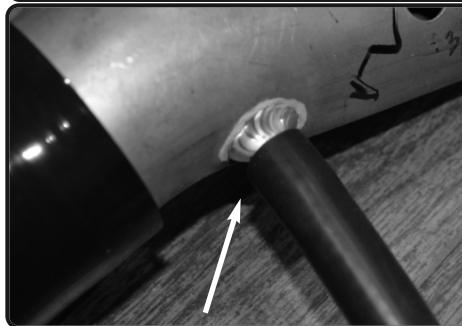
**19.** Tighten filter using 8mm nut driver.



**20.** Tighten the vibramount using 10mm socket and ratchet.



**21.** Install the temperature sensor into the grommet #6014.



**22.** Attach the crankcase hose to the 1/2" fitting on tube. Secure using original clamp.



**23.** Make sure the crankcase and temperature sensor are seated and secured.

# Installation Instructions P/N:PS7000



Congratulations! You have just completed the installation of this intake system. Periodically, check the alignment of the intake, normal wear and tear can cause nuts and bolts to come loose. **Note: Check clearance and adjust if needed! Failure to check the alignment and adjust the intake can cause damage that will void the warranty. Injen Technology is not responsible for any damages caused by/from improper installation.**

## Test Drive:

1. With the transmission in neutral or park and the parking brake engaged, start the engine. Listen for air leaks or odd noises. If air leaks are detected, secure hoses and connections. For any odd noises, inspect entire system for cause and adjust intake as needed. The Injen intake will function identically to the factory system but will be louder and more powerful.
2. Perform a road test. Listen for odd noises or rattles and fix as necessary.
3. If there are no issues, continue to enjoy your added performance from the Injen performance Intake kit.
4. Injen Technology recommends you periodically check clearance and adjust if needed! Failure to check the alignment and adjust the intake can cause damage that will void the warranty. Injen Technology is not responsible for any damages caused by/from improper installation.

1. Upon completion of the installation, reconnect the negative battery terminal before you start the engine.
2. Align the entire intake system for the best possible fit. Once the intake has been properly fitted continue to tighten all nuts, bolts and clamps.
3. Periodically, recheck the alignment of the intake system and make sure there is proper clearance around and along the length of the intake. Failure to follow proper maintenance procedures may cause damage to the intake and will void the warranty.
4. Start the engine and listen carefully for any odd noises, rattles and/or air leaks prior to taking it for a test drive. If any problems arise go back and check the vacuum lines, hoses and clamps that maybe causing leaks or rattles and correct the problem.
5. Check the filter for excessive dirt build up. Clean or replace the filter with an original Injen filter. Congratulations! You have just completed the installation of the best intake system sold on the market. Enjoy the added power and performance of your new intake system.