



Step 1

Remove your OEM fuel tank, radiator shrouds and Side Panels



Step 2

Remove the fuel pump from your OEM tank and place it into your IMS Tank - Do not Overtighten



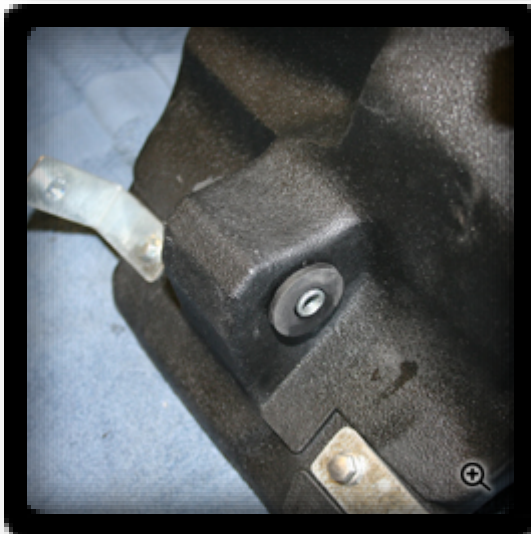
Step 3

Attach the supplied black L brackets to the sides of your IMS Tank



Step 4

Attach the supplied silver L brackets to the Rear of your IMS Tank



Step 5

Remove the Rubber Grommets and Metal sleeve from your OEM tank and place them into your IMS Tank.



Step 6

Attach the Front Mounting Brackets to your frame near each radiator



Step 7

Connect the fuel pump connectors to the fuel pump in your IMS Tank



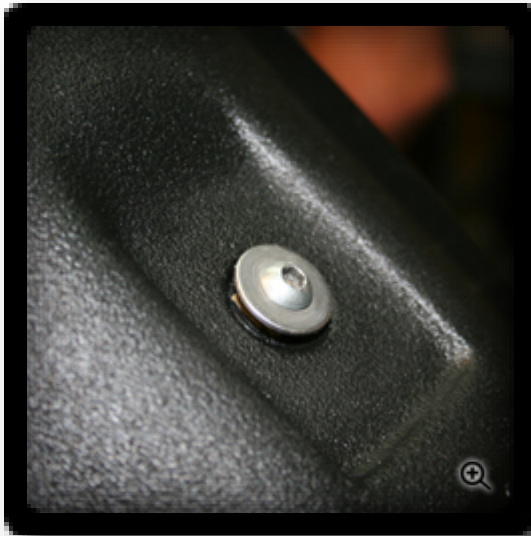
Step 8

Slide your IMS tank onto your bike and insert and tighten the bolt through the metal sleeve in the rear of the tank



Step 9

Attach the front mounting brackets to your IMS tank using the Rubber grommets found on your OEM Tank.



Step 10

Attach the supplied seat hook to your IMS Tank



Step 11

Attach your Radiator shrouds to your IMS Tank (some trimming may be necessary)



Step 12

Attach the Side Panels



Step 13

Secure the Black portions of the radiator shrouds using the OEM push clips



Step 14

Install your seat onto the bike (Seat Concepts Seat Shown)

Ensure there are no leaks and that the tank is mounted securely. Ensure that there are no sharp objects that rub against the tank or fuel lines. Ensure the tank and fuel lines are not touching any hot areas.

Enjoy your Ride!