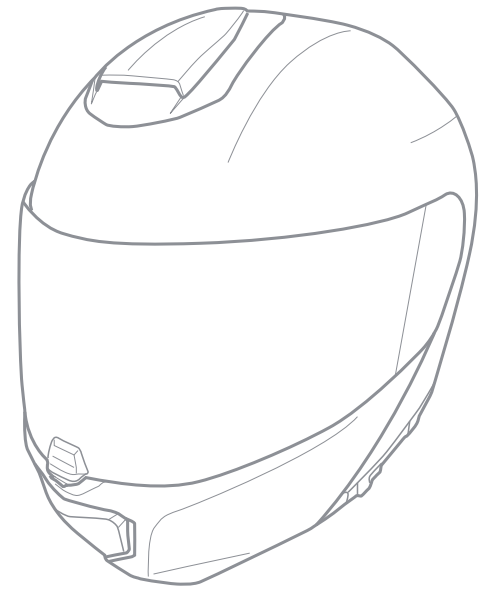


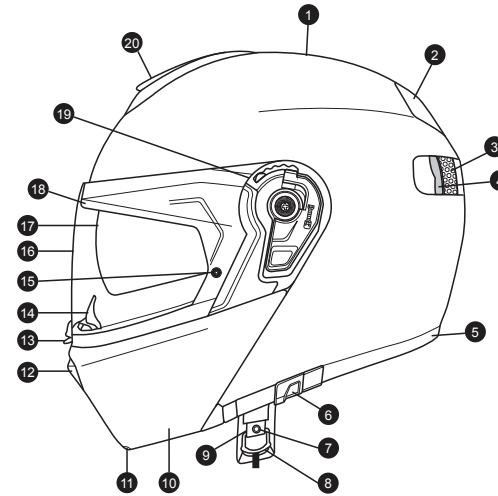
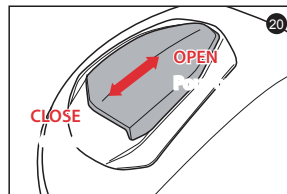
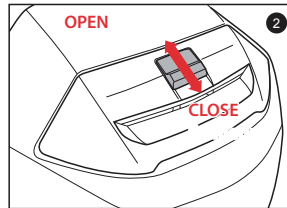
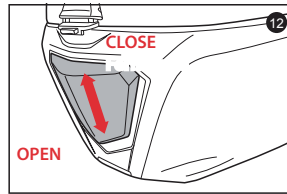
RPHA 90

Manual



For your safety, it is important that you completely read the owner's manual and all warning labels.

Specifications



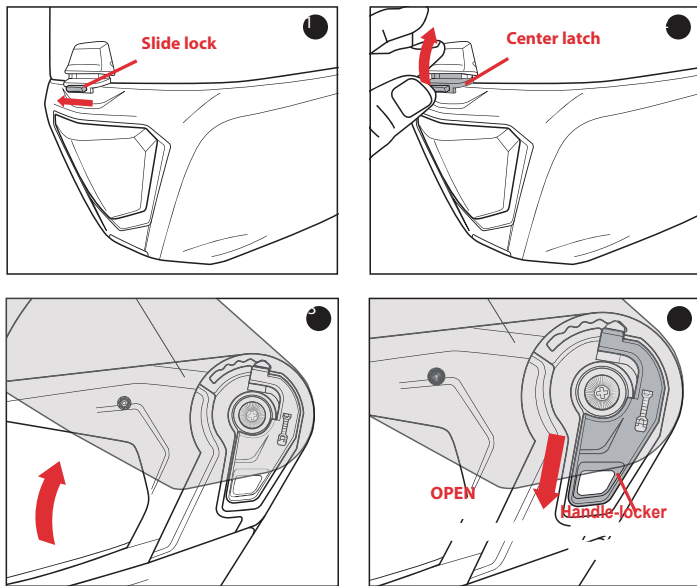
1. Outer shell
2. Rear venturi exhausts
3. Impact absorbent liner
4. Comfort liner
5. Rubber edge trim
6. Sun shield lever
7. Chin strap snap

8. Double "D" ring
9. Chin strap
10. Modular chin bar
11. Chin bar lever
12. Front chin vent
13. Shield locking system
14. Breath deflector

15. Anti-fog lens pins
16. Tool-less shield
17. Sun shield
18. Eyeport Gasket
19. Shield Ratchet
20. Top Front Vent

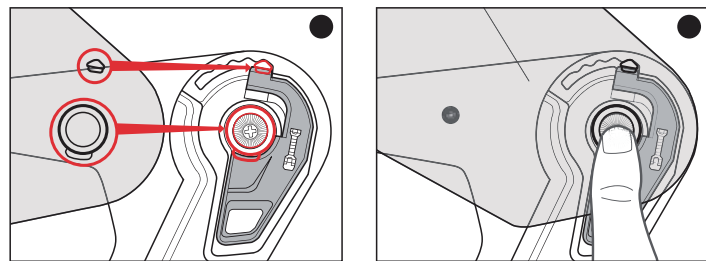
Shield Removal

1. Move the slide lock to left to disengage.
2. Squeeze the tab and lift up the center latch.
3. Open shield to the maximum open position.
4. Push the handle-locker to the open position. The shield will be automatically released out of base ratchet mechanism.



Shield Installation

1. Align and insert the top of the shield guide into the plate-gear guide.
2. With the guides properly aligned, press the lower section of the shield into the plate-gear mechanism. The locking tab should pop into position, locking the shield into place.

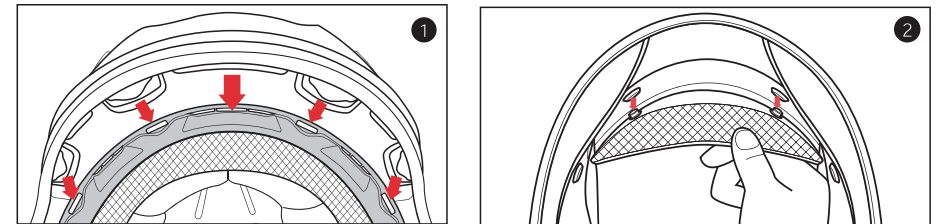


Warning!

Always check to make sure helmet pads are installed before using the helmet. A helmet with missing or improperly installed pads may increase your risk of serious injury or death in an accident.

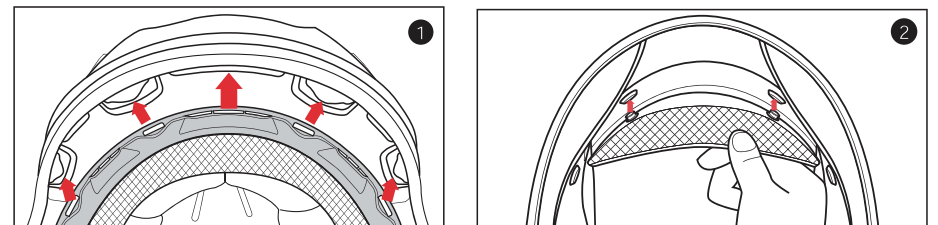
Crown Pad Removal

1. Grasp the crown pad fabric as close as possible to its plastic base and pull/pry away from the helmet. Notice how the crown pad plastic section aligns with the shell plastic sleeve. This will help orient you with the reinstallation.
2. Repeat same at rear.



Crown Pad Installation

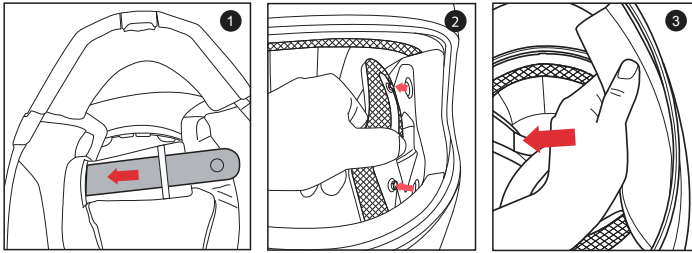
1. Install the front section first by aligning the plastic shell base and the crown pad plastic sleeve, ensuring that the center and side holes are properly aligned. Press the crown pad plastic sleeve (center portion) into the center of the channel which is built into the plastic shell base, working your way outward to each side.
2. Align and snap the two rear snaps into place.



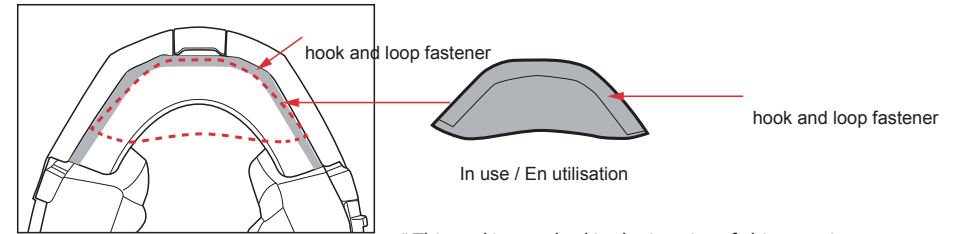
Cheek Pad Removal

There are 3 snaps holding the cheek pad in place.

1. Separate the chin strap from the cheek pad's tube.
2. Gently pry the cheek pad away from the interior, releasing the snaps.
3. Grasp the cheek pad near its center and gently pull it free from the chin strap.



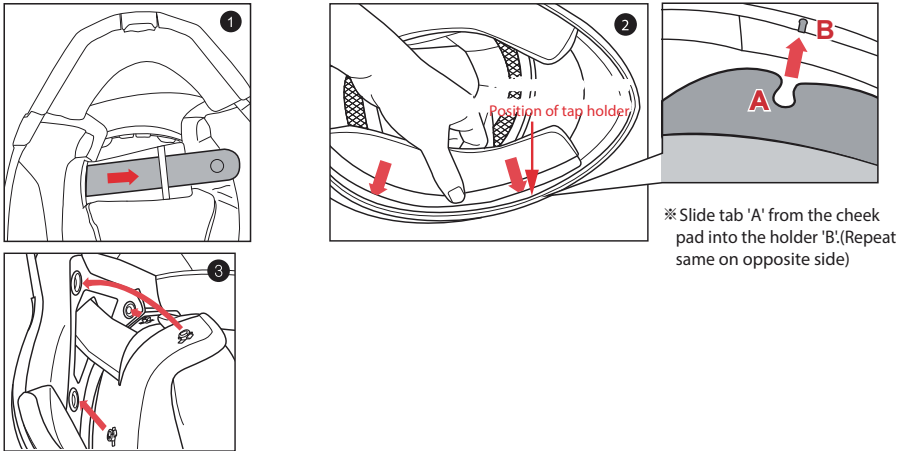
How to install additional Chin Curtain



* This pad is attached in the interior of chin curtain and it blocks the air coming in towards the neck.

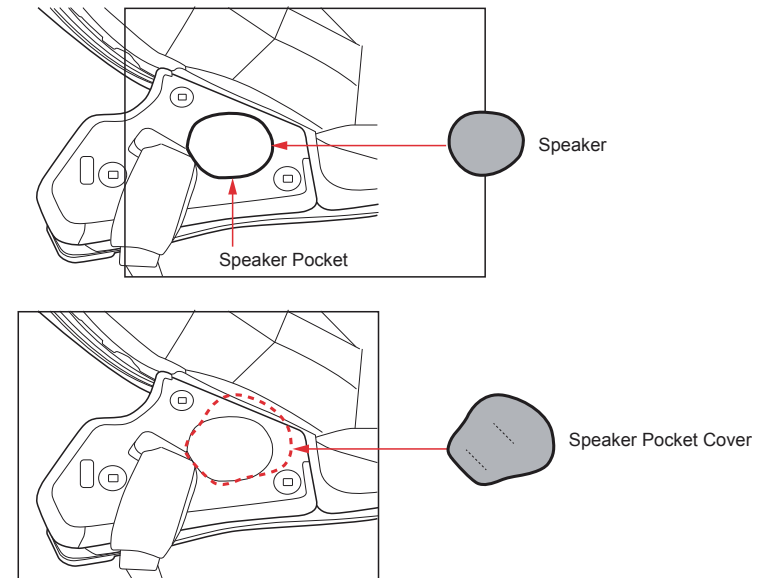
Cheek Pad Installation / Installation mousse joue

1. Feed the chin strap through the opening in the cheek pad.
2. Align and fully slide the cheek pad plastic plate between shell and EPS.
3. Clip the cheek pad's 3 small male snaps to the 3 female snaps fixed on the shell interior.



How to install speaker pocket cover

If you install communication system speakers, please do not use the speaker pocket cover
Si vous installez des haut-parleurs, veuillez ne pas utiliser les couvreurs haut-parleurs



Warning!

- Try not to operate the sun shield while riding as this may impair your vision and may lead to an accident.
- DO NOT pull on the sun shield when it is already down. The sun shield may be ejected and this will increase the risk of serious injury or death in the event of an accident.
- Do not attempt to adjust the sun shield itself with your hands. Always use the sun shield lever.
- DO NOT use sun shield at night time. The sun shield is only for day time use. The sun shield does not provide eye protection. When you use the sun shield be sure that the clear visor is also in closed position

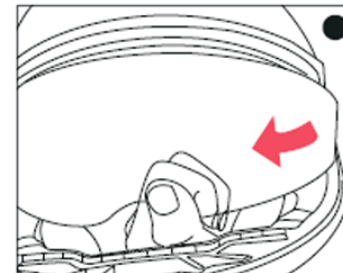
Sun shield Operation

Above illustration shows raised sun shield position.

Above illustration shows lowered sun shield position.

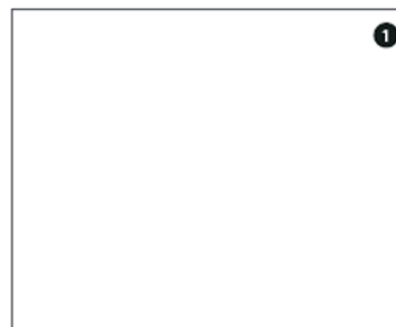
Sun shield Removal

1. While sun shield is in lower position, gently pull it until you see the top of the sun shield.
2. Gently pull one side of the sun shield as arrow indicates (repeat same for other side).



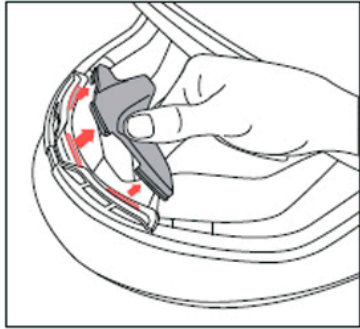
Sun shield Installation

1. Insert sun shield tab 'A' into 'B' position.(Repeat same on opposite side)



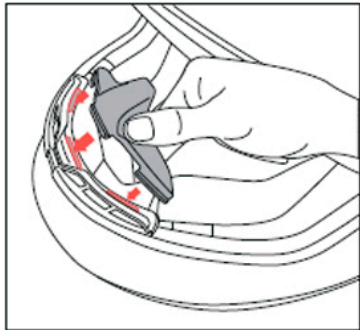
※ When installing the sun shield, be sure to have it slid behind the tap 'B' holder.

Breath Deflector Removal



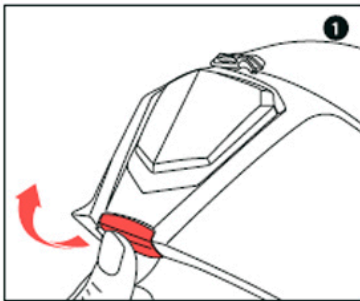
1. Push breath deflector flat and pull away from the helmet as arrows indicate.

Breath Deflector Installation

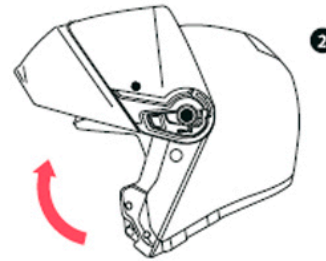


1. Push breath deflector into specified slot as arrows indicate.

Opening Chin Bar



1. To open the chin bar, simply pull the lever forward and push the entire bar upward.

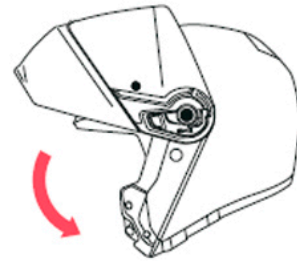


2

2. The chin bar is in the full open position when you hear "click" sound.
/ Si vous entendez le bruit 'clac', la sangle jugulaire est ouverte.

Warning!

Lower and lock before you leave: Never ride with the chin bar in the raised position. Please use care when opening or closing the chin bar as it may scratch the helmet. Damage caused by this is not subject to manufacturer's warranty.



1

Closing Chin Bar

Warning!

The chin bar must be kept closed and locked while riding.

Warning!

When the shield is open and the chin bar is raised and lowered to a lock position, the shield may not be in a latched position with the chin bar. Before riding, please make sure that the shield is latched with the chin bar securely. (Center closure system)



2

Pull the chin bar downward to completely cover your face and chin. Listen for "click" sound to ensure that the chin bar has locked into its full closed position.