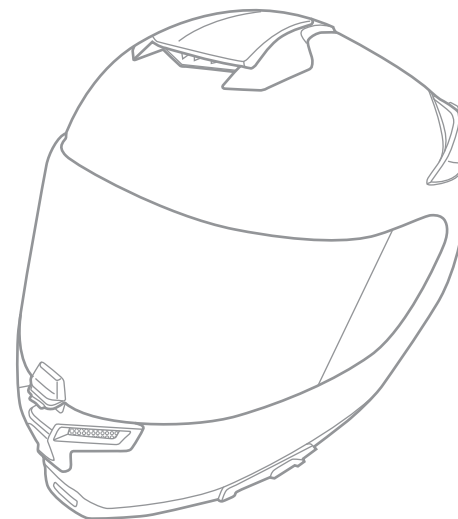




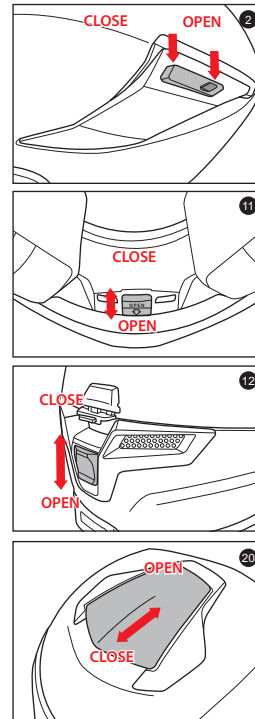
RPHA 70 **ST**

Manual

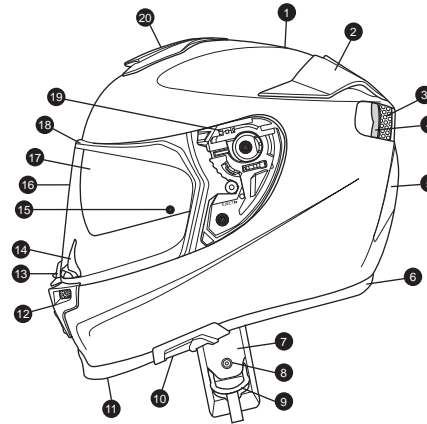


Warning!

For your safety, it is important that you completely read the owner's manual and all warning labels.



Specifications



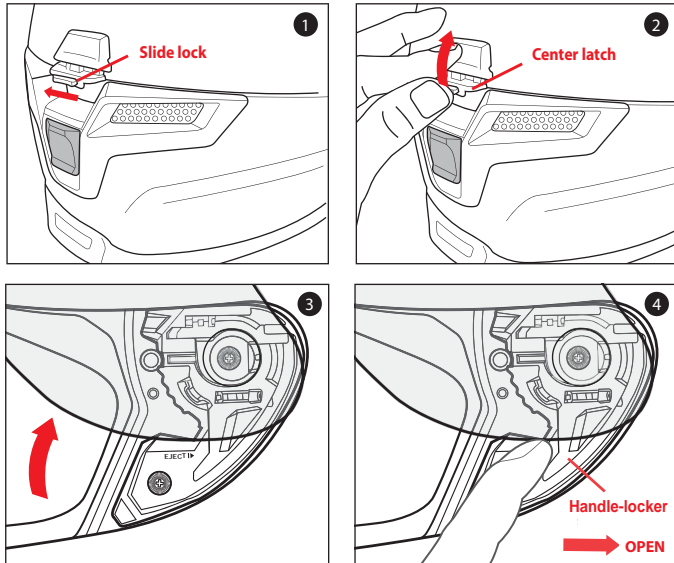
1. Outer shell
2. Rear venturi exhausts
3. Impact absorbent liner
4. Comfort liner
5. Lower rear exhaust venturi vents
6. Rubber edge trim
7. Chin strap

8. Chin strap snap
9. Double "D" ring
10. Sun shield (Sunlight film) lever
11. Inner chin vent
12. Front chin vent
13. Shield locking system
14. Breath deflector

15. Anti-fog lens pins
16. Tool-less shield
17. Sun shield (Sunlight film)
18. Eyeport Gasket
19. Shield Ratchet
20. Top Front Vent

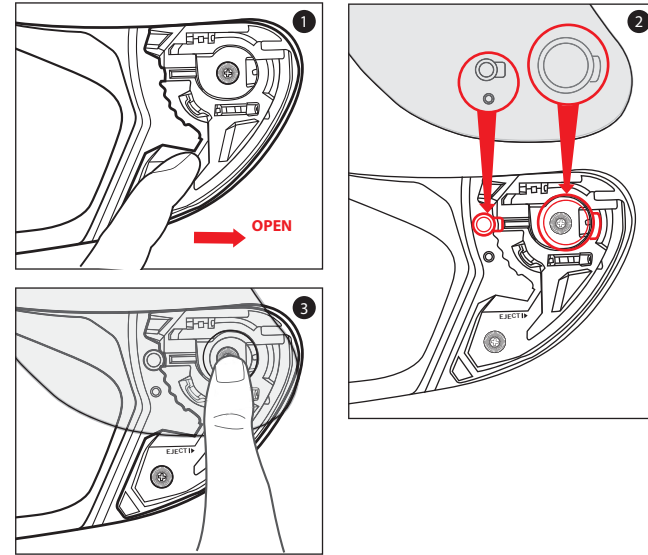
Shield Removal

1. Move the slide lock to left to disengage.
2. Squeeze the tab and lift up the center latch.
3. Open shield to the maximum open position.
4. Push the handle-locker to the open position. The shield will be automatically released out of base ratchet mechanism.



Shield Installation

1. Ensure that the handle-locker is in the open position.
2. Align and insert the top of the shield guide into the plate-gear guide.
3. With the guides properly aligned, press the lower section of the shield into the plate-gear mechanism. The locking tab should pop into position, locking the shield into place.



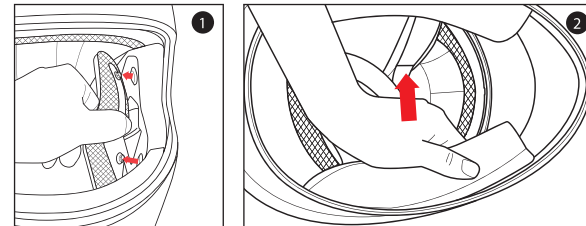
Warning!

Always check to make sure helmet pads are installed before using the helmet. A helmet with missing or improperly installed pads may increase your risk of serious injury or death in an accident.

Cheek Pad Removal

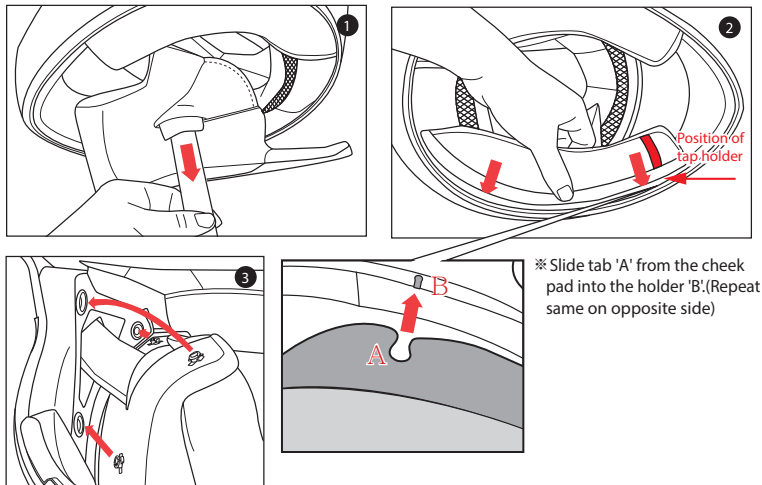
There are 3 snaps holding the cheek pad in place.

1. Gently pry the cheek pad away from the interior, releasing the snaps.
2. Grasp the cheek pad near its center and gently pull it free from the chin strap.



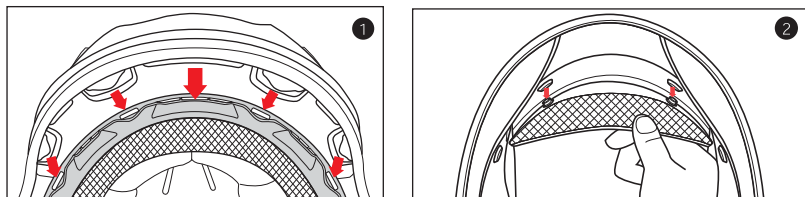
Cheek Pad Installation

1. Feed the chin strap through the opening in the cheek pad.
2. Align and fully slide the cheek pad plastic plate between shell and EPS.
3. Clip the cheek pad's 3 small male snaps to the 3 female snaps fixed on the shell interior.



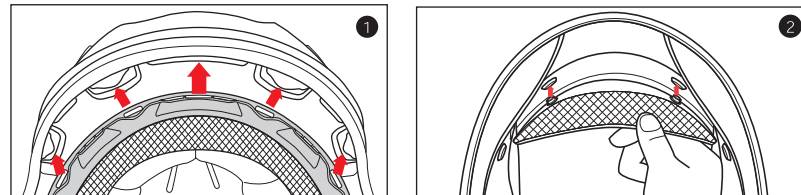
Crown Pad Removal

1. Grasp the crown pad fabric as close as possible to its plastic base and pull/pry away from the helmet. Notice how the crown pad plastic section aligns with the shell plastic sleeve. This will help orient you with the reinstallation.
2. Repeat same at rear.

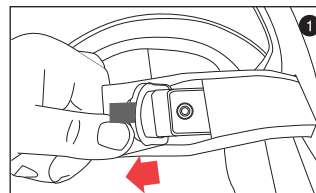


Crown Pad Installation

1. Install the front section first by aligning the plastic shell base and the crown pad plastic sleeve, ensuring that the center and side holes are properly aligned. Press the crown pad plastic sleeve (center portion) into the center of the channel which is built into the plastic shell base, working your way outward to each side.
2. Align and snap the two rear snaps into place.



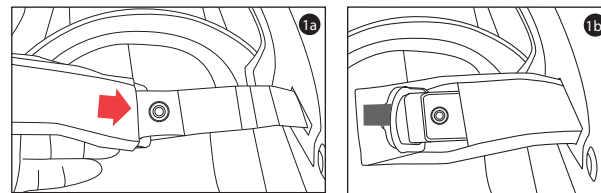
Chin Strap Cover Removal



1. Grasp the end of the chin strap cover and pull/pry away from the helmet.

Chin Strap Cover Installation

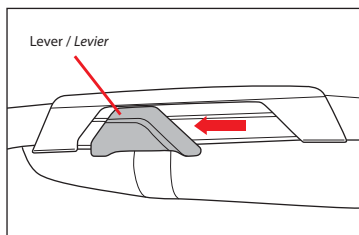
1. Insert the chin strap into the chin strap cover and push the chin strap all the way in.



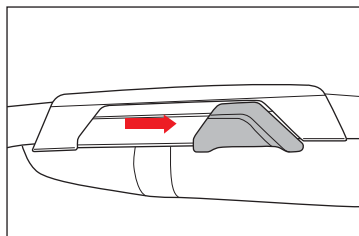
Warning!

- Try not to operate the sun shield(sunlight film) while riding as this may impair your vision and may lead to an accident.
- DO NOT pull on the sun shield(sunlight film) when it is already down. The sun shield(sunlight film) may be ejected and this will increase the risk of serious injury or death in the event of an accident.
- Do not attempt to adjust the sun shield(sunlight film) itself with your hands. Always use the sun shield(sunlight film) lever.
- DO NOT use sun shield(sunlight film) at night time. The sun shield(sunlight film) is only for day time use. The sun shield(sunlight film) does not provide eye protection. When you use the sun shield(sunlight film) be sure that the clear visor is also in closed position

Sun shield (Sunlight film) Operation



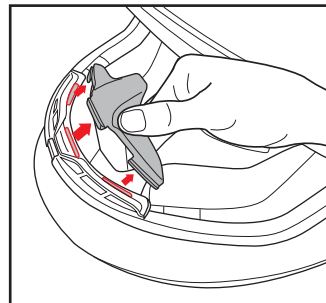
Above illustration shows raised sun shield (sunlight film) position.



Above illustration shows lowered sun shield (sunlight film) position.

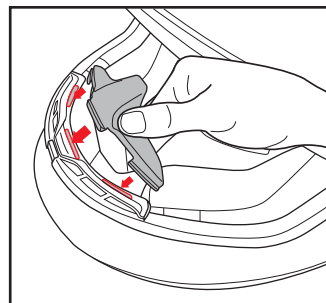
Breath Deflector Removal

1. Push breath deflector flat and pull away from the helmet as arrows indicate.

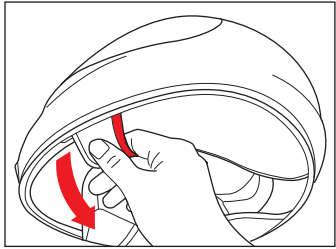


Breath Deflector Installation

1. Push breath deflector into specified slot as arrows indicate.

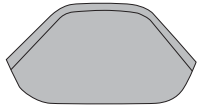
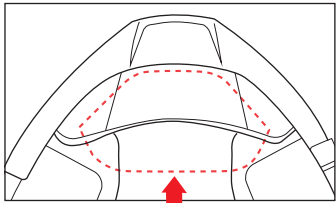
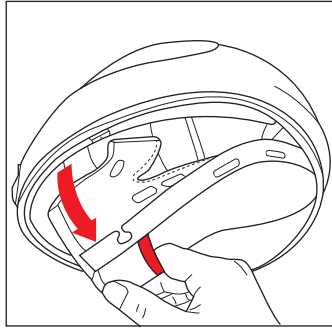
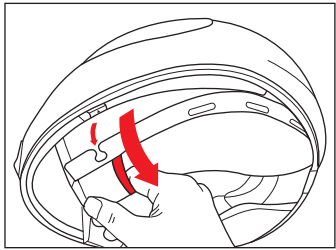


Emergency Kit



In an emergency, you may remove the cheek pads as indicated in the illustration. Pull the red line pocket with your fingers.

► Please use Emergency Kit only in emergency situation.



* This pad is attached in the interior of chin curtain and it blocks the air coming in towards the neck.