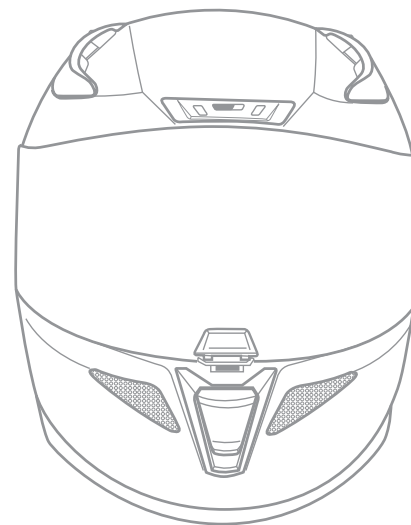




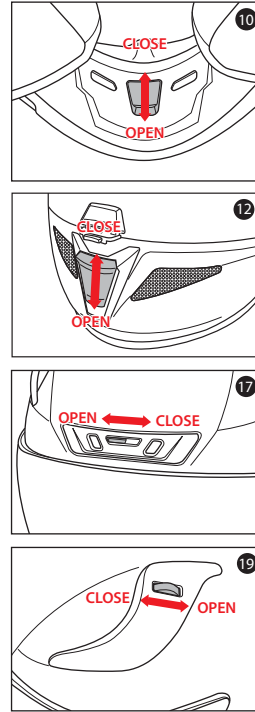
# RPHA 11

Manual

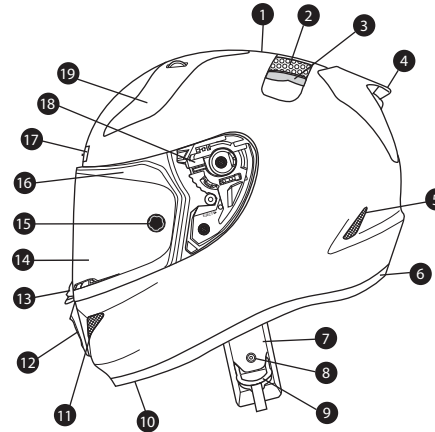


**Warning!**

For your safety, it is important that you completely read the owner's manual and all warning labels.



## Specifications



1. Outer Shell
2. Impact Absorbent Liner
3. Comfort Liner
4. Rear Exhaust Venturi Spoiler
5. Lower Rear Exhaust Venturi Vents
6. Rubber Edge Trim

7. Chin Strap
8. Chin Strap Snap
9. Double "D" Ring
10. Inner Chin Vent
11. Side Chin Vents
12. Front Chin Vent
13. Shield Locking System

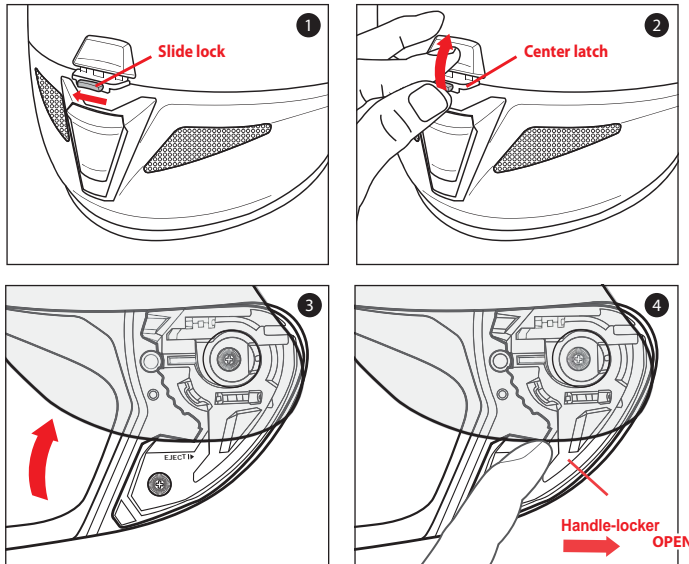
14. Tool-less Shield
15. Tear-Off Button & Anti fog lens Pins
16. Eyeport Gasket
17. Forehead Vents
18. Shield Ratchet
19. Top Front Vents

## Shield Removal

### <Anti fog lens & Tear off Film >

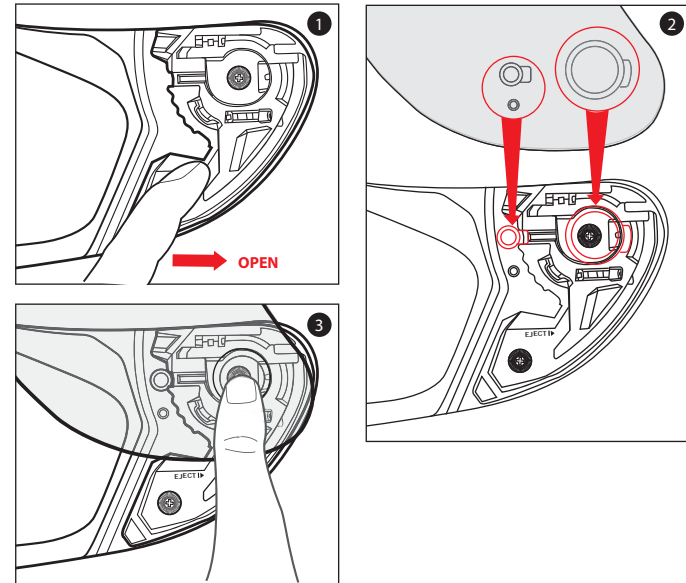
When putting on both tear off film and anti fog lens, the tear off film should be installed first and then anti fog lens. (The tear off film cannot be installed after installing the anti fog lens.)

1. Move the slide lock to left to disengage.
2. Squeeze the tab and lift up the center latch.
3. Open shield to the maximum open position.
4. Push the handle-locker to the open position. The shield will be automatically released out of base ratchet mechanism.



## Shield Installation

1. Ensure that the handle-locker is in the open position.
2. Align and insert the top of the shield guide into the plate-gear guide.
3. With the guides properly aligned, press the lower section of the shield into the plate-gear mechanism. The locking tab should pop into position, locking the shield into place.



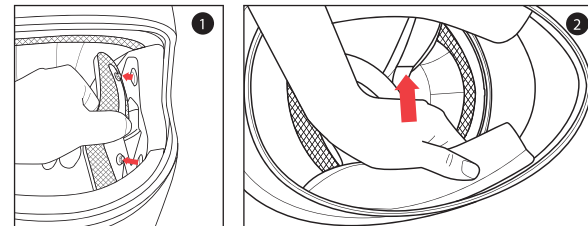
### Warning!

Always check to make sure helmet pads are installed before using the helmet. A helmet with missing or improperly installed pads may increase your risk of serious injury or death in an accident.

## Cheek Pad Removal

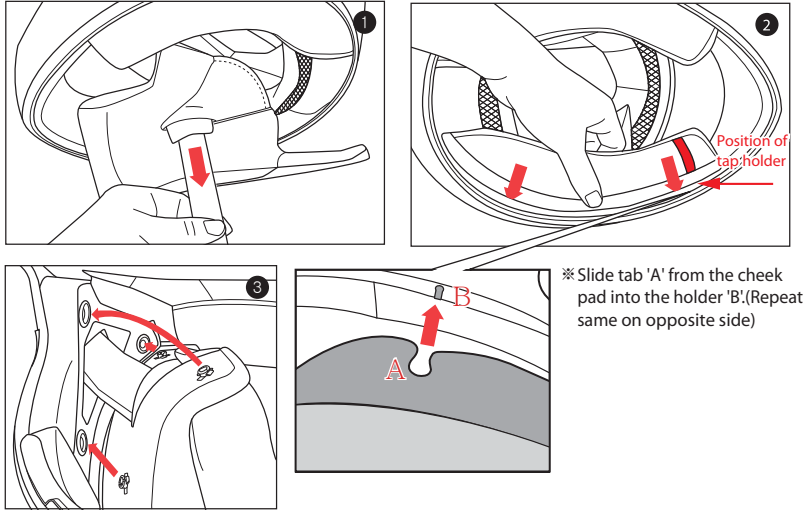
There are 3 snaps holding the cheek pad in place.

1. Gently pry the cheek pad away from the interior, releasing the snaps.
2. Grasp the cheek pad near its center and gently pull it free from the chin strap.



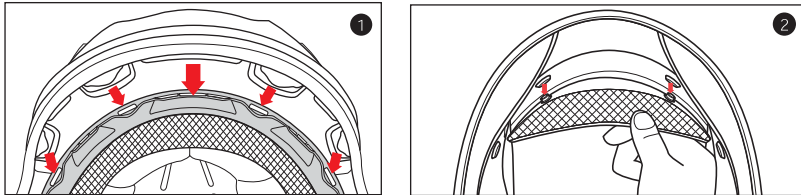
## Cheek Pad Installation

1. Feed the chin strap through the opening in the cheek pad.
2. Align and fully slide the cheek pad plastic plate between shell and EPS.
3. Clip the cheek pad's 3 small male snaps to the 3 female snaps fixed on the shell interior.



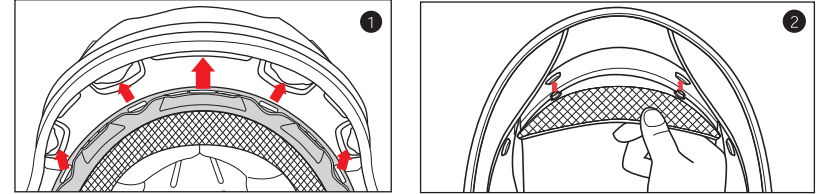
## Crown Pad Removal

1. Grasp the crown pad fabric as close as possible to its plastic base and pull/pry away from the helmet. Notice how the crown pad plastic section aligns with the shell plastic sleeve. This will help orient you with the reinstallation.
2. Repeat same at rear.

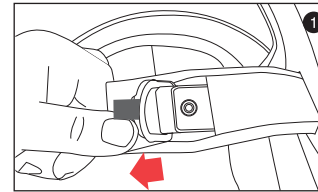


## Crown Pad Installation

1. Install the front section first by aligning the plastic shell base and the crown pad plastic sleeve, ensuring that the center and side holes are properly aligned. Press the crown pad plastic sleeve (center portion) into the center of the channel which is built into the plastic shell base, working your way outward to each side.
2. Align and snap the two rear snaps into place.



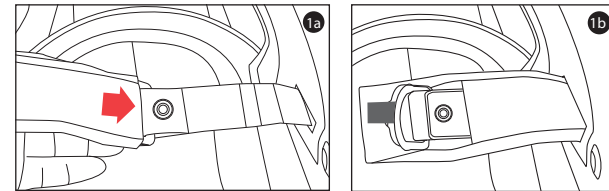
## Chin Strap Cover Removal



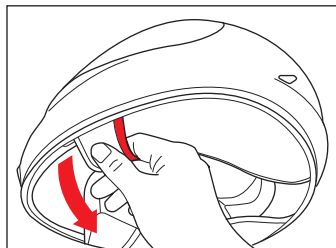
1. Grasp the end of the chin strap cover and pull/pry away from the helmet.

## Chin Strap Cover Installation

1. Insert the chin strap into the chin strap cover and push the chin strap all the way in.

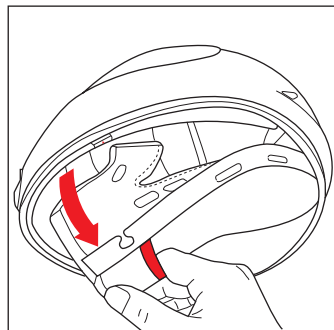
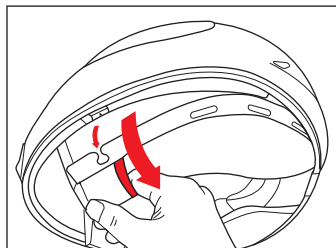


## Emergency Kit



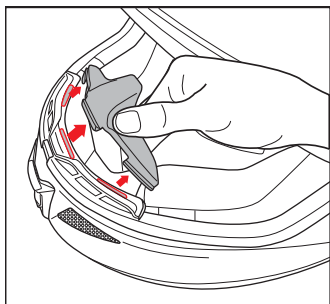
In an emergency, you may remove the cheek pads as indicated in the illustration. Pull the red line pocket with your fingers.

► Please use Emergency Kit only in emergency situation.

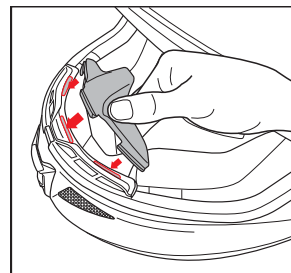


## Breath Deflector Removal

1. Push breath deflector flat and pull away from the helmet as arrows indicate.



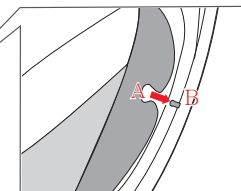
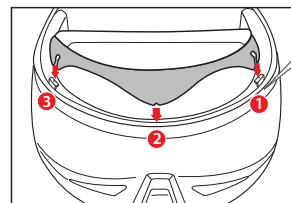
## Breath Deflector Installation



1. Push breath deflector into specified slot as arrows indicate.

## Chin Curtain Installation

1. Align the center of the chin curtain with the center of the helmet. Push into place as arrows indicate. (Please assemble in order from 1 to 3.)



※ Slide tab 'A' from chin curtain into holder 'B'. (Repeat same on other two sides)

## Chin Curtain Removal

1. Pull the chin curtain away from the helmet as arrow indicates.

