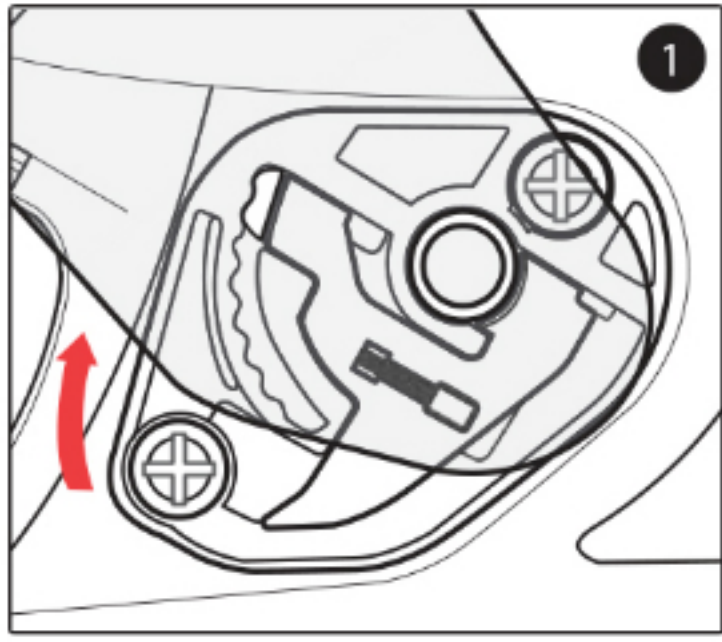


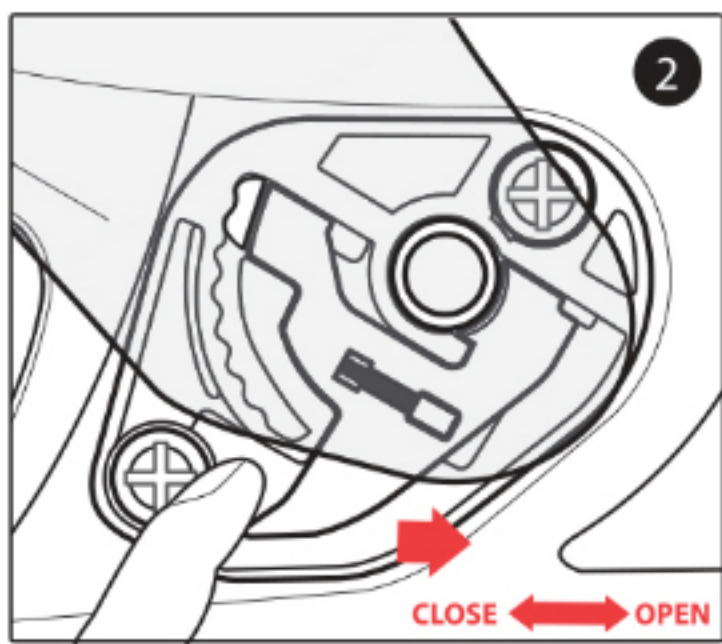
# HJ-17 SHIELD REMOVAL AND INSTALLATION

Helmet Model: CL-MAX II, IS-MAX BT, SY-MAX III, IS-MAX II

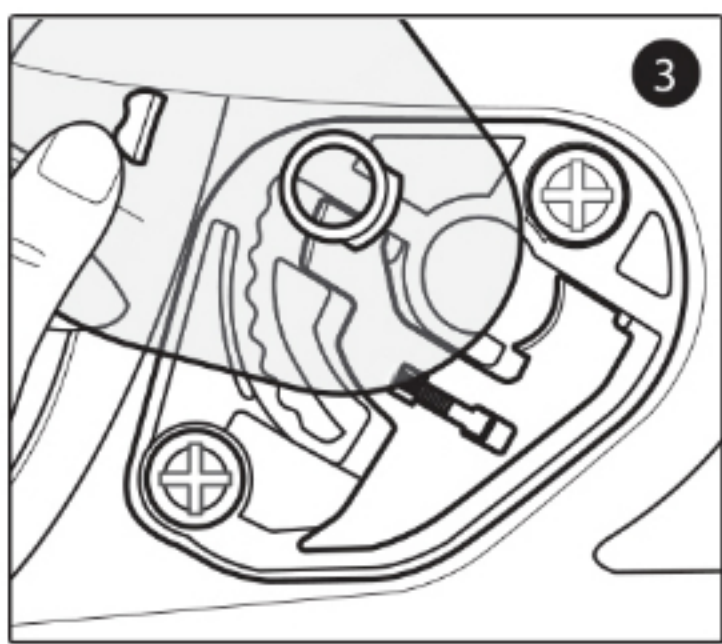
## Removal



1. Open the shield to its maximum open position. Do not force.

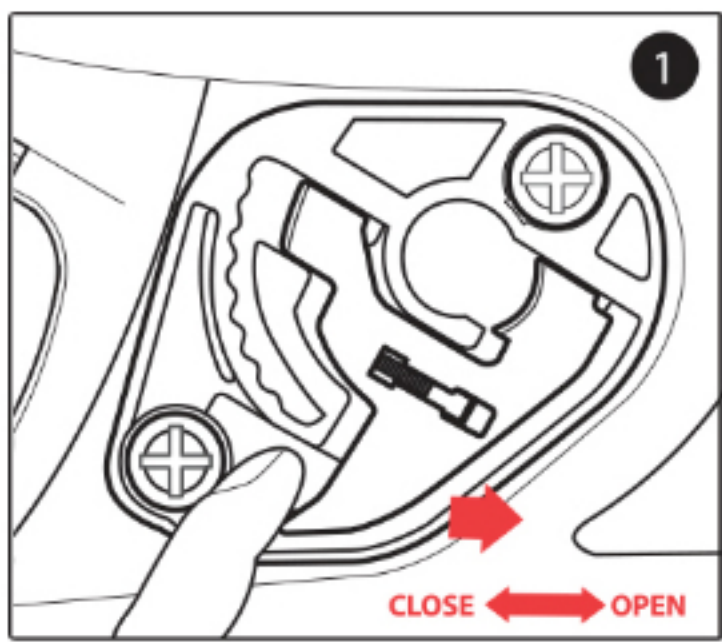


2. Move the handle-locker to the open position.

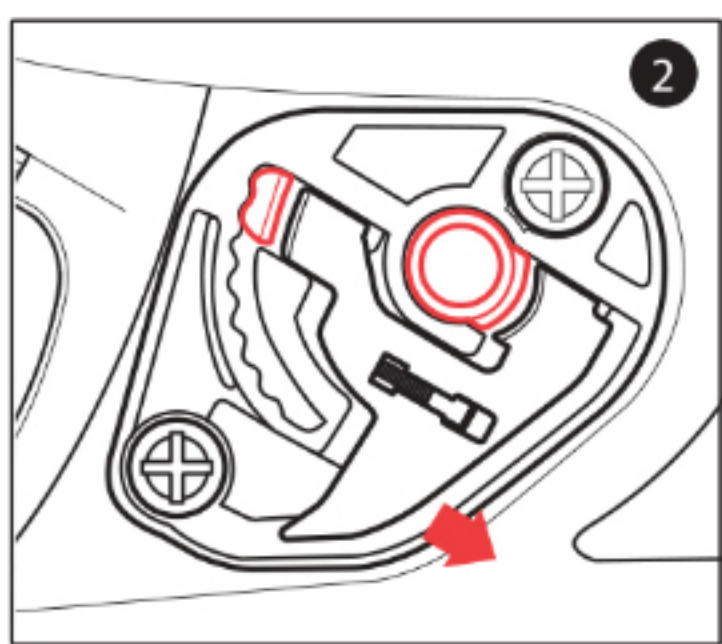


3. The shield will be automatically released out of the base ratchet mechanism.

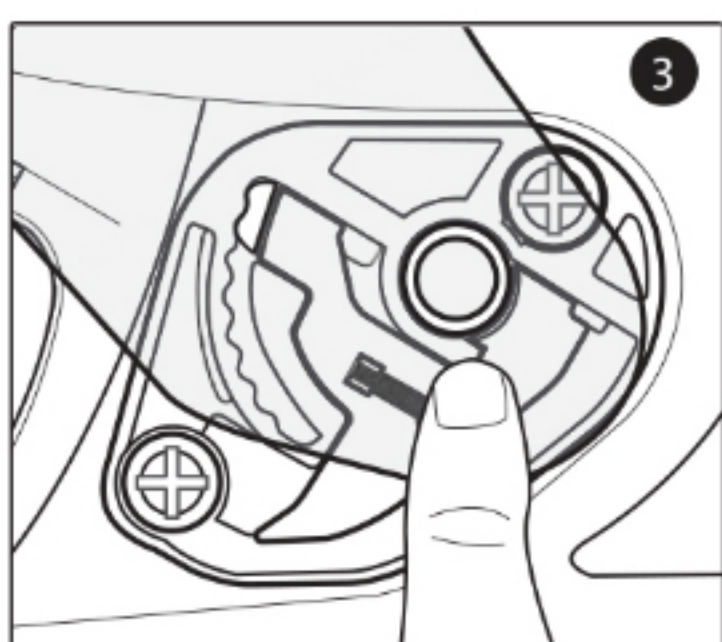
## Installation



1. Ensure that the handle-locker is in the open position.



2. Align and insert the top of the shield guide into the plate-gear guide.



3. With the guides properly aligned, press the lower section of the shield into the plate-gear mechanism. The locking tab should pop into position, locking the shield into place.