



GS-911wifi
Diagnostic tool for
BMW motorcycles



THANK YOU FOR BUYING A GS-911wifi.
Now let's register and configure it to get started!



Introduction

The GS-911wifi is the second generation of the GS-911 tool, and uses WiFi to connect to your phone, tablet or computer. Emergency and cloud functionality is supported on iOS, Android, Mac and other platforms.

1 Ready-to-start checklist

To register and configure your GS-911wifi device, ensure you have the following:

- ▶ The GS-911wifi device, connected to your PC or Mac using the supplied USB cable.
- ▶ An internet connection on your Mac or PC.
- ▶ The GS-911wifi Utility application - downloaded, installed and running. (See step 2)

2 Download the GS-911wifi PC/ Mac Utility

Go to hexcode and proceed to the DOWNLOADS page. Download and install the GS-911wifi Utility for Mac or Windows. This utility can register your device, update your device and configure the WiFi connection used by your device.

We also have GS-911wifi Launcher apps for iOS and Android on the iTunes App store and Google Play store. You can find the mobile app by searching for "GS-911wifi".

5 How do I plug it into my bike?

EU4 compliant BMW motorcycles have a 16-pin diagnostic connector (OBD plug) to which your GS-911 connects.

Normally, this connector is covered and located under the seat, but location may vary between models.



8 Cloud functionality

Most service functionality is available in the cloud functionality of MAC, iOS and Android.

9 Explore your GS-911wifi

Carry out an AutoScan with your GS-911wifi as a first diagnostic task.

Functionality modes and updates

- Service functionality** includes the ability to reset service reminders, output tests, calibrations, ABS bleed tests, clear and relearn adaptations and much more. Available with the GS-911 Windows PC application.
- Cloud functionality** is introduced in a staged manner, aiming to provide the same service functionality that is found within the Windows PC application, on any platform (Mac, Linux, iOS, & Android).
- Emergency functionality** is embedded into the GS-911wifi unit. It allows the user to view the ECU information, read and clear fault codes on all control units, as well as view real-time sensor values for all engine control units.
- Software updates** are performed via the internet and include regular functionality, new motorcycle models and latest fault code database updates.

3 Register your GS-911wifi

The life of every GS-911wifi device starts with registration. This activates your device, and requires an internet connection on your PC or Mac.

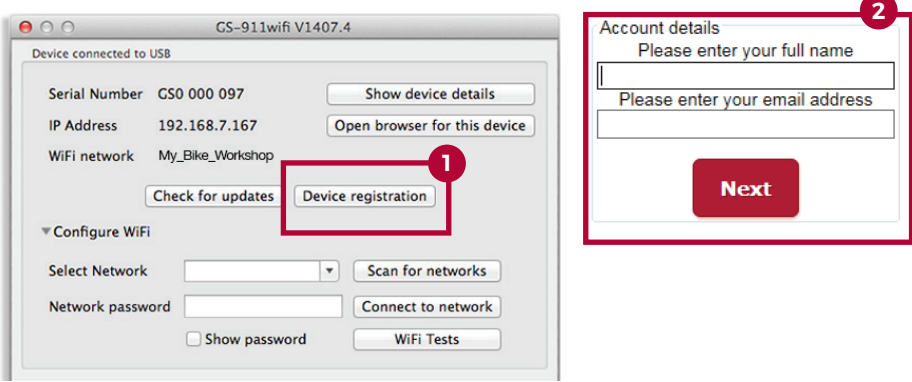
STEP 1:
After you have installed the GS-911wifi Utility, open this application. Now connect your GS-911wifi device to any open USB port. This will power your GS-911wifi device and the utility app should detect it shortly, displaying its serial number. Click the [device registration] button. This opens the registration page in your browser.

STEP 2:
Submit your full name and email address. These details are required for support and warranty purposes. Please ensure you use a valid email address, as a confirmation email will be sent to complete the process.

STEP 3:
Check your email inbox - once you receive your GS-911wifi registration email, click on the validation link in the body of the email.

Note: It may take several minutes to an hour to receive the registration email. This is out of our control and depends on your email server and Spam settings. If you have still not received the email after waiting one hour, please check your spam folder and settings. Re-attempt the registration process and check that your email address is correct.

See the screenshot below for easy reference.



6 GS-911 Windows PC application

GS-911 is a Windows PC-based diagnostic tool for BMW motorcycles. The GS-911 Windows PC application provides the complete set of service functions. Use the GS-911 Downloader utility to download and install the latest GS-911 Windows PC software.

NOTE: Some service functionality is available on the HEX Cloud. This is an ever-growing sub-set of the full service functionality offered in the Windows PC application. Please see the function chart for the latest functionality.



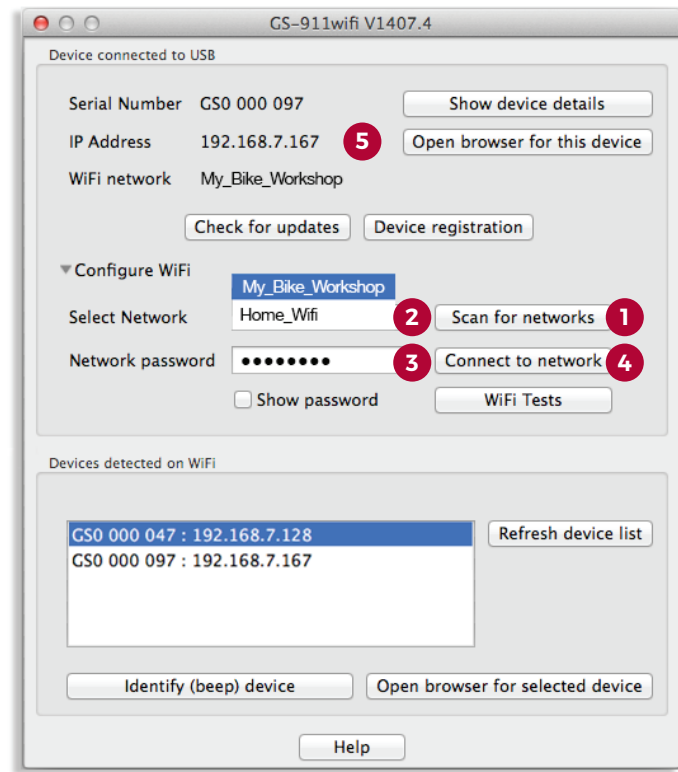
4 Configure your GS-911wifi

Make sure your GS-911 is connected to an open USB port on your PC or Mac. On the GS-911wifi Utility app window, expand the [Configure WiFi] section.

Click the (1) [Scan for networks] button. It will list all the (2) WiFi networks that have been found in the range of your GS-911wifi device. Select your network SSID and enter the (3) WiFi network password, then click the (4) [Connect to network] button to join this network. The top section of the GS-911wifi Utility will show the WiFi network to which your device is connected.

(5) **Note:** The devices detected on WiFi section, shown below, will display the serial and IP numbers of all connected GS-911wifi devices. Click the [Refresh device list] button to see an updated list. Then select the device and open the browser.

See the screenshot below for easy reference.



7 Using iOS and Android devices

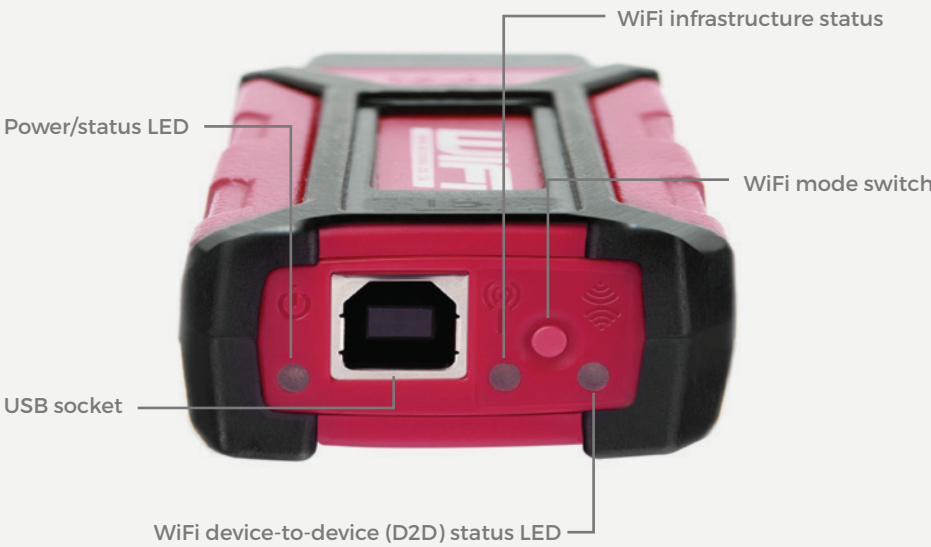
1. Search for GS-911wifi on Google Play or the iTunes App Store and install.
2. Ensure your mobile device and GS-911wifi are on the same WiFi network.
3. Use the GS-911wifi Launcher app and start browsing your bike.

WHEN YOU ARE OFF THE BEATEN TRACK:

1. Switch your GS-911wifi interface to D2D mode.
2. Connect your mobile device to the WiFi network starting with "GS911".
3. Use the GS-911wifi Launcher app and start browsing your bike.



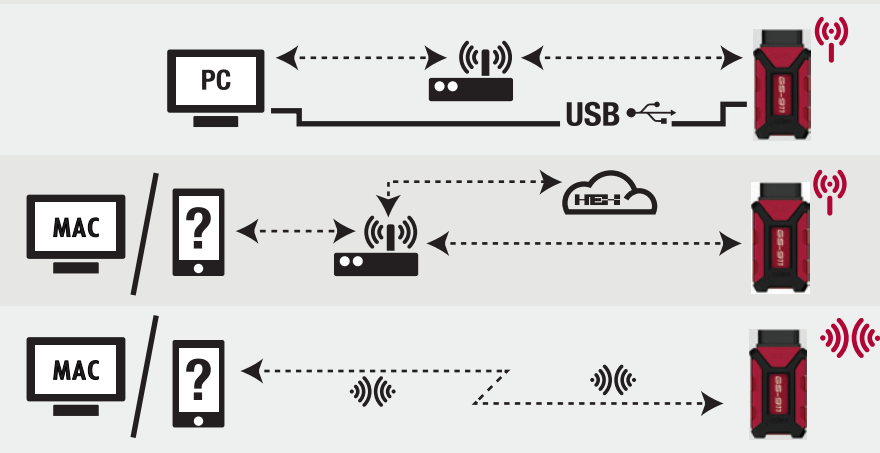
The GS-911wifi



The flashing lights

- POWER/STATUS LED**
 - Device is booting: 5 Green flashes/sec
 - Normal operation: 2 Green flashes/sec
 - Low power mode: Green flashes every 2 secs
 - Boot failure: Continuous red
- WIFI INFRASTRUCTURE STATUS LED**
 - Scanning for WiFi networks: Flashing red
 - Connecting to WiFi network: Continuous red
 - Connected & waiting for IP: Flashing green
 - Successfully connected to WiFi: Continuous green
- WIFI DEVICE-TO-DEVICE (D2D) STATUS LED**
 - Device-to-device mode activated: Single red flash
 - Device-to-device mode ready: Continuous green

Functionality and infrastructure



Service	Cloud	Emergency	Updates
Windows GS-911 PC app + WiFi infrastructure or USB + Internet			
--			
Any device with browser + WiFi infrastructure + Internet			
--	--		--
Any device with WiFi & browser, i.e. phones & tablets			

GS-911™ Diagnostic Tool *for BMW Motorcycles*

Introduction

Motorcycles are becoming increasingly complex with each new model. Few are more complex than your BMW motorcycle. Various separate electronic control units that control just about everything and no old-fashioned fuses. These control units continuously test themselves, and have the ability to let you know exactly what problems they identify, whether within themselves, their surrounding sensors or their outputs.

Isn't it about time there was a tool that you could plug into your BMW motorcycle that would help you pinpoint almost any problem? Whether you're at home in your garage, doing a pre-trip inspection or in the middle of a round-the-world adventure, just wanting to get back on the road.

GS-911 is a Diagnostic Tool for BMW Motorcycles – with functionality to read and clear fault codes, view real-time values (sensors and outputs), basic service functionality and the ability to run on most mobile phones. This is the ideal portable tool that should be in everyone's toolkit, on every trip!

What does it do?

GS-911 is a unique software and hardware combination that allows the BMW enthusiast to communicate with the control modules in a safe and controlled manner. In the true spirit of adventure associated with these motorcycles, the tool is also available with a Bluetooth interface, allowing you to use its emergency functionality with most modern mobile phones - no need to carry a bulky laptop on your trip. Essentially the GS-911 shows the fault codes and their text descriptions, along with hardware and software versions, as well as other manufacturer related data. It also allows you to view real-time (live) data from ALL engine controllers, as well as clear fault codes once a repair has been affected.

Advanced service and maintenance functionality includes resetting of service interval reminders, functional (output) tests and adaptation resets. The robust, light and compact design of the unit makes it extremely easy to carry as a field tool which requires no external electrical supply.

Supported Motorcycles

R-Series:

RnineT
HP2 Enduro, HP2 Megamoto, R1200GS, R1200GS Adventure, R1200RT, R1200R R1200ST, R1200S, R1200S HP2
R1200C, R1200CL
R1150GS, R1150GS Adventure, R1150RT, R1150R, R1150RS
R1100S
R850C*, R850R*, R850RT*

K-Series:

K1300R, K1300S, K1300GT
K1200GT, K1200R, K1200R Sport, K1200S, K1200LT, K1200GT (non-CAN), K1200RS

F-Series:

F800GS, F800GS Adventure
F800S, F800ST, F800R

C-Series:

C1, C1-200
C600Sport, C650GT

G-Series:

G650 XChallenge, G650 XCounty, G650 XMoto
G650GS, G650GS Sertão
G450X

S-Series:

S1000RR
S1000RR HP4

* Some models require a GS-911 3-pin Interface.

Updating your GS-911

Functionality is updated by downloading and installing the latest client software. If a firmware update of the GS-911 device is required, this will be done automatically once you have the GS-911 device plugged in and run the updated GS-911 Windows software. Thus it is completely field updateable and does NOT have to be returned to us (or our resellers) for firmware upgrades etc.

Enthusiast interfaces can easily be upgraded to professional versions via the internet.

Professional vs Enthusiast

The enthusiast and professional versions have identical functionality with the exception that the enthusiast version limits the service functionality to a maximum of 10 motorcycles (using the motorcycle's VIN). Emergency functionality (reading/clearing fault codes,

viewing real-time (live) engine data etc.) can be used on an unlimited number of motorcycles, irrespective of whether a GS-911 is an enthusiast or a professional unit!

Systems Covered

- **Engine controller** (BMS-K, BMS-KP, BMS-KP2, BMS-C, BMS-CII, BMS-E, MA2.4, KMSK)
- **ABS** (ABS-II, ABS-N, Integral-ABS, Integral-ABS-CAN, Integral-ABS2- CAN, ABS8M, ABS8MOC, ABS9M)
- **Central Vehicle Electronics** (ZFE)
- **Instrument cluster** (Kombi)
- **Anti-Theft Alarm** (DWA)
- **Tyre Pressure Control** (RDC)
- **Radio**



85 grams
for peace of mind

GS-911™ Diagnostic Tool *for BMW Motorcycles*

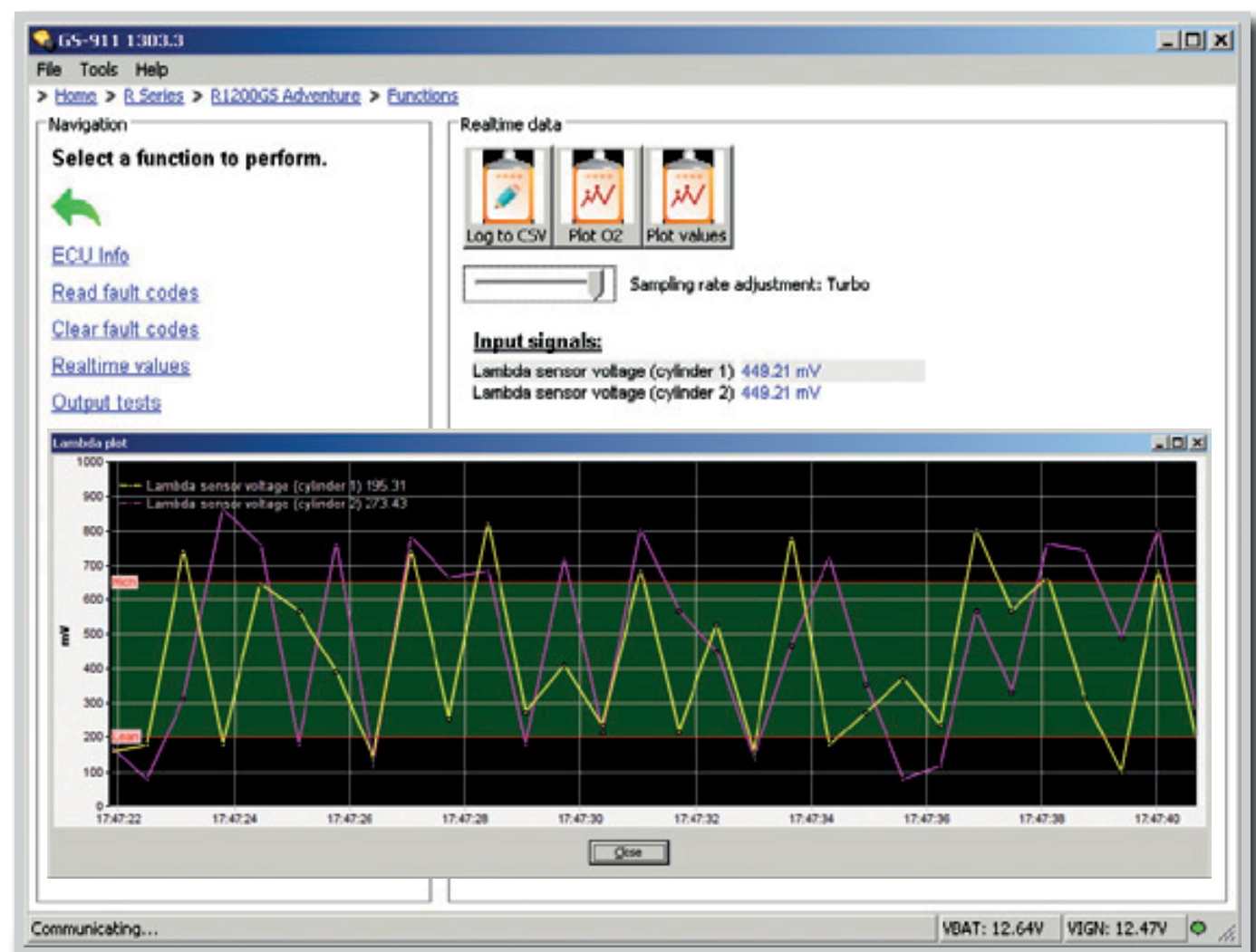
Choosing a GS-911

Deciding on a GS-911 version might initially seem like a complex decision, but with an easy online upgrade to a professional license, the choice is primarily between the USB and USB+Bluetooth versions once you have decided your role as user.

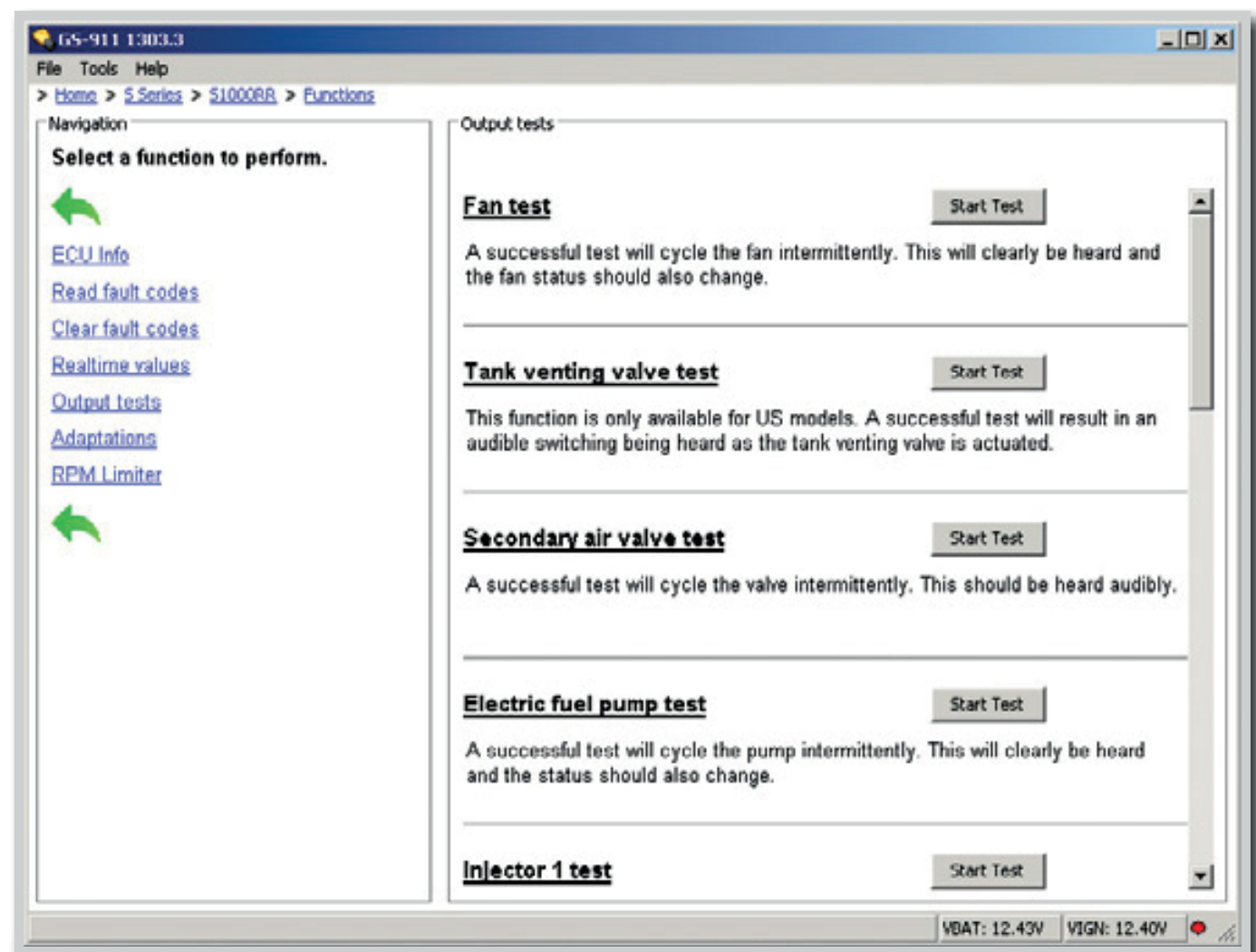
There is no difference in functionality between similarly licensed USB and USB+Bluetooth versions - except of course for the obvious difference in Bluetooth functionality which allows the device to connect with Bluetooth enabled mobile devices, laptops and PC's.

The USB+Bluetooth version is the obvious choice to be used for "on the road" diagnostics since it can easily be paired with portable Bluetooth devices such as mobile phones and laptops.

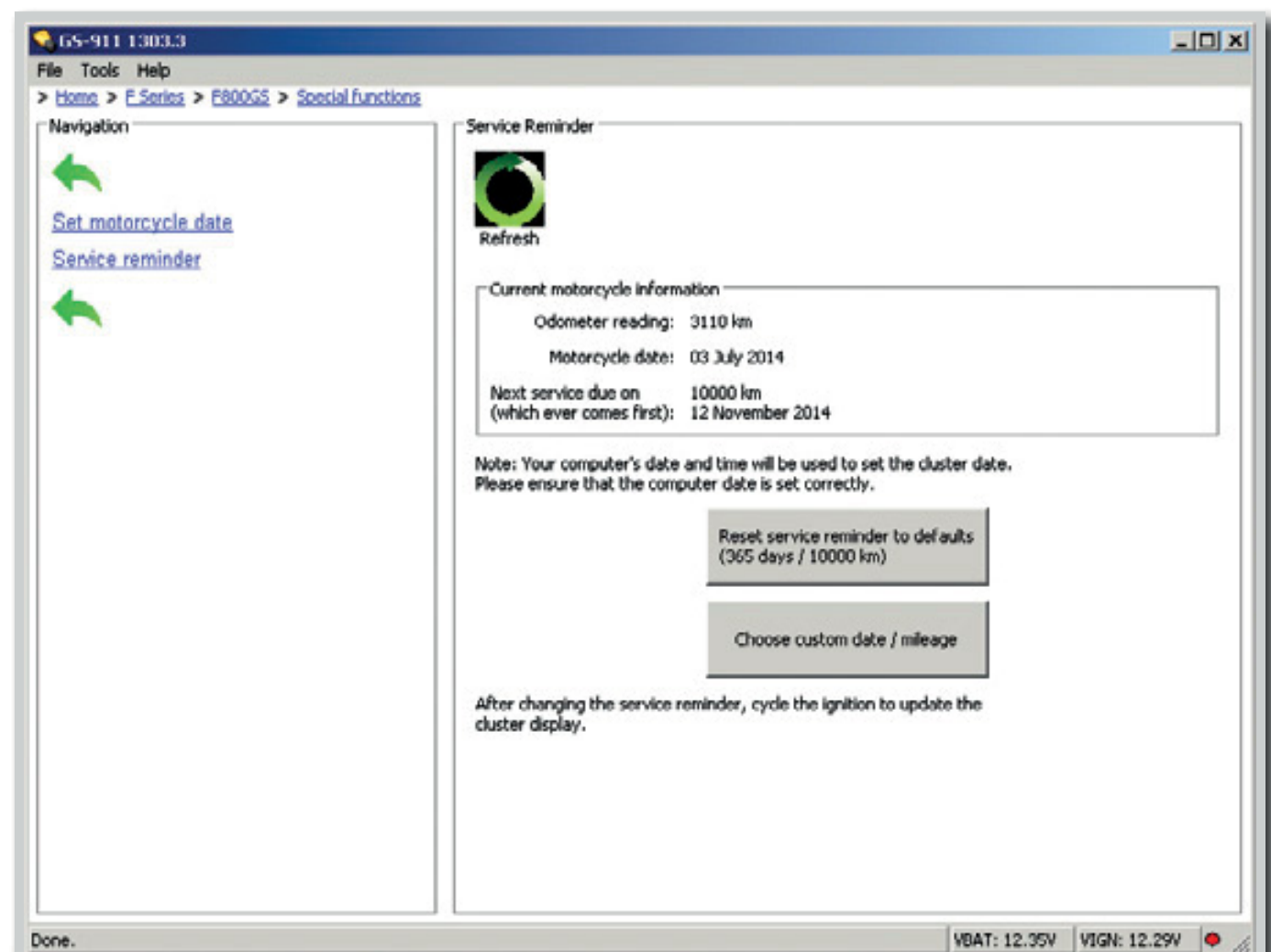
The Enthusiast/Professional differences only affect the PC/Laptop software, as the Service & Maintenance functionality is added ONLY to the PC/Laptop software.



Lambda Plot



Output Tests



Service Reminder



GS-911 *3-pin* INTERFACE

Your maintenance companion for older BMW motorcycles.

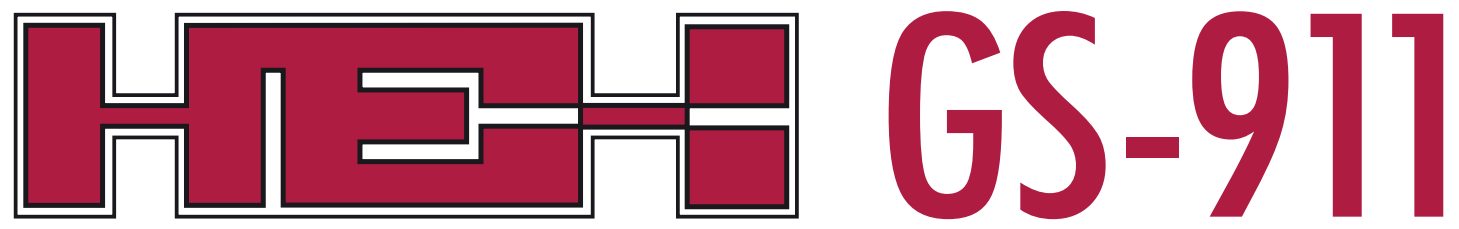


Quick Start Guide

Register to unlock your device



- Step 1.** Download the *GS-911downloader*, from the *Downloads* page on our website, This is a Windows PC based application that ONLY runs on a Windows PC.
- Step 2.** Once downloaded, run the *GS-911downloader*. The downloader will instruct you when to connect your GS-911 *3-pin INTERFACE* to the PC, after which it will connect to the server to determine which versions are available for download. A browser window will be opened and list the GS-911 *3-pin INTERFACE* details and appropriate download links.
- Step 3.** If your GS-911 *3-pin INTERFACE* has not yet been registered - typical for a new interface - the server will initiate the registration page as a first step, prior to listing your downloadable links.
- Step 4.** From the browser window that the *GS-911downloader* opened, download and install any of the PC versions available to you.
Note: the GS-911 *3-pin INTERFACE* functionality is only available on PC versions of the *GS-911 Application*.
- Step 5.** Once installed, run the *GS-911 Application*, by default the *Setup* window will open, or you can find it under *Tools* in the menu bar. Make sure you have USB selected and then click *Test Interface*. This will test the interface, and report the serial number, firmware version, battery voltage of the motorcycle (if connected to motorcycle) etc.
- Done!** Congratulations! Your GS-911 *3-pin INTERFACE* is now ready to use.



Diagnostic Tool for BMW Motorcycles



Quick Start Guide

Register to unlock your device



- Step 1.** Do NOT plug in your GS-911 interface into the PC or laptop USB port until instructed to do so.
- Step 2.** Download the *GS-911downloader*, from the *Downloads* page on our website. This is a Windows PC based application that ONLY runs on a Windows PC.
- Step 3.** Once downloaded, run the *GS-911downloader*. The downloader will instruct you when to connect your GS-911 interface to the PC, after which it will connect to the server to determine which versions are available for download. A browser window will be opened and list the GS-911 interface details and appropriate download links.
- Step 4.** If your GS-911 interface has not yet been registered - typical for a new interface - the server will initiate the registration page as a first step, prior to listing your downloadable links.
- Step 5.** From the browser window that the *GS-911downloader* opened, download and install any of the PC versions available to you.
- Step 6.** Once installed, run the *GS-911 Application*, by default the *Setup* window will open, or you can find it under *Tools* in the menu bar. Make sure you have USB selected and then click *Test interface*. This will test the interface, and report the serial number, firmware version, battery voltage of the motorcycle (if connected to a motorcycle) etc. A firmware update may be required.
- Done!** Congratulations! Your GS-911 interface is now ready to use.